

South Dakota Bird Notes

Official Publication
of
SOUTH DAKOTA ORNITHOLOGISTS' UNION
(Organized 1949)

Vol. 27, No. 4

DECEMBER, 1975

Whole No. 107



Snowy Owl

—Photo by Willis Hall

South Dakota Bird Notes, the Organ of South Dakota Ornithologists' Union, is sent to all members whose dues are paid for the current year. Sustaining Members \$10.00; Adults \$4.00; Juniors (10-16) \$2.00. Family Membership (husband and wife) with one subscription to Bird Notes \$6.00; Libraries (subscription) \$4.00; Single and back copies: Members \$1.00, Non-members \$1.50. All dues should be remitted to the Treasurer, L.M. Baylor, 1941 Red Dale Dr., Rapid City, S. Dak. 57701. All manuscripts for publication should be sent to Editor June Harter, Highmore, S. Dak. 57345. Orders for back numbers should be sent to the Librarian, Herman P. Chilson, Webster, S. Dak. 57274. Published Quarterly.

Vol. 27, No. 4

December, 1975

Whole No. 107

In This Number . . .

President's Page, Nelda Holden	63
Boreal Owl Taken Near Watertown, Walter, A. Rose and Paul F. Springer	64
Spring Meeting Announcement	66
SDOU Annual Meeting, William E. Lemons and Editor	67
General Notes of Special Interest—Long-tailed Jaeger: New Record for South Dakota, Trumpeter Swans at Lacreek N.W.R., Twelve Snowy Owls Near Yankton, Barrow's Goldeneye for a Second Winter at Rapid City, Common Flicker Behavior, Barred Owl at Waubay Refuge, Sora Roosting in a Tree in Hyde County	69
1975 Fall Season	71
Request for Great Egret Records, Herman P. Chilson	79

South Dakota Ornithologists' Union

●FFICERS 1976-77

President
Vice President
Secretary
Treasurer
Editor
Librarian

Nelda Holden, Rt. 4, Box 68, Brookings 57006
William E. Lemons, Meckling 57044
Esther Edie, Rt. 2, Bruce 57220
L.M. Baylor, 1941 Red Dale Dr., Rapid City 57701
June Harter, Highmore 57345
Herman P. Chilson, Webster 57274

DIRECTORS

For Term Expiring 1976: Bill Lemons, Meckling; Charles Rogge, Sioux Falls; Nelda Holden, Brookings; Esther Edie, Bruce; Galen L. Steffen, Burke.

For Term Expiring 1977: Herman P. Chilson, Webster; Bruce Harris, Clear Lake; N.R. Whitney, Jr., Rapid City; L.M. Baylor, Rapid City; S.G. Froiland, Sioux Falls.

For Term Expiring 1978: Byron Harrell, Vermillion; J.W. Johnson, Huron; Herbert Krause, Sioux Falls; B.J. Rose, Pierre; June Harter, Highmore.

President's Page

IT IS a pleasure to welcome you from the president's page after being your treasurer for almost 14 years. From these pages I hope we will get to know each other better, and thus promote the welfare of the organization. I will be presenting comments and issues from the world of birds, nature, and environment. In turn, I hope that you will respond with views, problems, and criticisms that will be helpful to the union. Make them a letter to the editor, and also send along your bird observations and notes on natural history.



For my first president's page I would like to address the careless usage of the word "habitat."

Everybody seems to agree that the decline of wildlife is at least partially due to the loss of habitat; the popular press leads people to think that habitat is anything not utilized for intensive agriculture. Within an undisturbed area there is a sequence of events or stages that tends to lead to a balance of wildlife and plants. What the final, or climax, stage will be is ultimately determined by the climate of that area. With this sequence of habitat stages goes a succession of bird species. A good birder can look at an extensive area and predict 90 percent of the birds that will be there.

The habitat requirements of species are sometimes so specific that, for example, the nesting Kirtland's Warbler requires jack pine stands of 9-25 years of age. This requirement is now effected by

planned and controlled forest fires of the correct intensity. Furthermore, the Lewis' Woodpecker is found in abundance in burned areas in the Black Hills, and there is a wren for almost every vegetational climax in South Dakota.

Man has greatly influenced the natural stages of vegetational succession in this state and elsewhere. The result has been changes such as the decrease in population of the bashful, rural-loving bluebird. On the other hand, the diversity of trees, shrubs, vines, gardens, and bird feeders in the urban setting has created an edge effect that makes good habitat. Consequently, the urbanized bird is here to stay.

Pheasants and seed-eating birds that find refuge in weedy spots may be in for trouble. Their habitats are being replaced by agricultural acres in response to the world's demands for food increases. Even the multi-producing blackbirds may decline in population if their seed supply is cut off.

People must be more specific when they use the word "habitat," and they must give greater consideration to quality. Please remember that a vast quantity of idle acres does not necessarily constitute a quality habitat. It is the interaction of plants, animals, and man working together that produces balanced, self-sustaining systems. So if you want to help birds, learn their requirements and promote the creation and protection of their habitat.

Government agencies, including the Corps of Engineers, create new wildlife habitat in exchange for the prime habitat they destroy when they channel streams, build dams and roads, and establish new

(Continued on Page 79)

Boreal Owl Taken Near Watertown

Walter A. Rose, Box 131, Clear Lake, So. Dak. 57226
Paul F. Springer, U.S. Fish and Wildlife Service, c/o Humboldt State
University, Arcata, California 95521

IN MARCH 1913 Fred Gustavson shot a Boreal Owl (*Aegolius funereus*) about 4½ miles southwest of Clear Lake, Deuel County, South Dakota. The specimen was mounted by the senior author and is now housed at South Dakota State University.

This bird was examined carefully by the junior author (Paul F. Springer) and compared with known specimens of both the Boreal Owl and the closely related Saw-whet Owl (*Aegolius acadicus*). The spotted instead of streaked forehead, pale yellowish instead of blackish bill, noticeably black-bordered instead of inconspicuously bordered facial disks, tail with five instead of three whitish bars, and overall body length of 9½ inches instead of 7-8½ inches distinguished it as a Boreal Owl.

In the Check-list of North American Birds, Fifth Edition (Amer. Ornithol. Union 1957), the Boreal Owl is said to winter south to Fargo, North Dakota and Fillmore County in southern Minnesota, and casually to Lincoln, Nebraska. The species is included in the Check-list of South Dakota Birds (Whitney et al., 1956) as an accidental in the state. In the "Birds of Minnesota," Roberts (1936) cites evidence of possible breeding in extreme northern Minnesota.

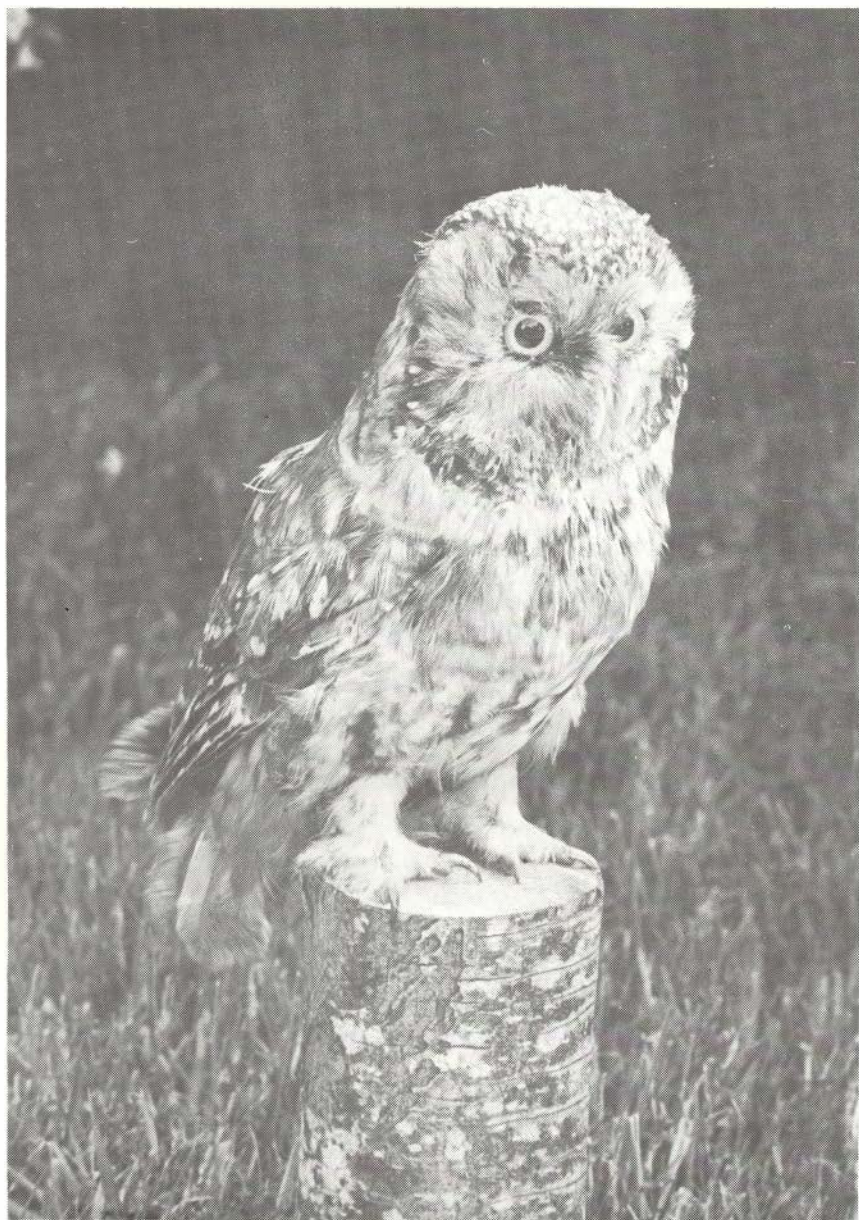
Previously in South Dakota a Boreal Owl was observed carefully by Katherine Kaufman (1957) at Freeman, Hutchinson County, on December 6, 1957. Another bird was reported 28 miles away during the same winter by Mrs. Enoch Breen, but no details are given (Anon., 1957).

Other reported specimens include a bird caught by hand in Watertown by Dr. L.J. Moriarty (1951) on the unusual date

of August 16, 1949, and viewed also by his wife. Scott Findley and his wife (1953 and personal communication with the junior author) observed an owl they thought to be this species on April 12, 1953, about 2½ miles northwest of Hartford, Minnehaha County. Findley mentioned light facial disks that were edged with black. As previously noted the Saw-whet Owl has inconspicuously bordered facial disks. Findley, however, did not note the critical field marks of a spotted head and light-colored bill, and judged the bird to be only 7-8 inches in length. Since the possibility of a Saw-whet Owl is not definitely eliminated, it seems preferable not to consider this specimen to have been a Boreal Owl.

LITERATURE CITED

- American Ornithologists' Union. 1957. Check-list of North American birds. Fifth edition. Port City Press, Baltimore, 691 pp.
- Anonymous. 1957. Christmas bird count. South Dakota Bird Notes 9 (4):62.
- Findleys (Mr. and Mrs. J. Scott). 1953. In retrospect. South Dakota Bird Notes 5(3):49.
- Kaufman, Katherine. 1957. Richardson's Owl in Freeman. South Dakota Bird Notes 9(4):66.
- Moriarty, L.J. 1951. Richardson's Owl in N.E. So. Dak. South Dakota Bird Notes 3(1):13.
- Roberts, Thomas S. 1936. The birds of Minnesota. 2 vols. University of Minnesota Press, Minneapolis.
- Whitney, N.R., Jr., (Chairman) and others. 1956. Check-list of South Dakota birds. South Dakota Bird Notes 8(1):13-19.



—Photo Courtesy of U.S. Fish and Wildlife Service

Boreal Owl

ANNOUNCEMENT

SDOU Spring Meeting, May 28-30, 1976

Bob Marshall Organizational Camp, Custer State Park

Headquarters for the SDOU Spring Meeting, May 28-30, 1976 will be the Bob Marshall Organizational Camp, Custer State Park, about five miles east of Custer, South Dakota, U.S. Highway 16-A. Camp services will include meals and men's and women's dormitories—all at a cost of \$8.50 a day per person. Each camper must provide personal bedding and towels and campers will need to take a turn with minimal K.P. duties. Camp services will be available from 3 p.m., May 28 to 3 p.m., May 30. The first meal will be served at 6 p.m. on Friday, and the last meal will be at noon on Sunday. Saturday and Sunday field trips will feature areas of the southern Black Hills and the sagebrush plains of Fall River County.

Due to contractual arrangements concerning the number of participants using the camp's facilities, the Host Committee requests early preregistrations and a preregistration deposit. No later than April 15, 1976, please send an indication of the number of persons in your party and a preregistration deposit of \$8.00 per person to:

L.M. Baylor, SDOU Treasurer
1941 Red Dale Drive
Rapid City, South Dakota 57701

Please make your deposit check payable to the South Dakota Ornithologists' Union.

SDOU 1976 Dues Reminder

With the new year, SDOU memberships for 1976 are due. By your prompt response to this reminder, you can help save SDOU the cost of mailing you a personal dues notice. As a further economy, SDOU will not mail a membership card unless you specifically request one. Your canceled check will be your receipt for your 1976 dues.

The classes of membership are: Sustaining Membership, \$10.00; Family Membership (husband and wife), \$6.00; Adult Membership, \$4.00; Junior Membership (ages 10-16), \$2.00; and Library Subscription, \$4.00.

Please send your 1976 dues payment to:

L.M. Baylor, SDOU Treasurer
1941 Red Dale Drive
Rapid City, South Dakota 57701

Make your check payable to the South Dakota Ornithologists' Union, and please indicate your mailing address with the zip code.

SDOU Annual Meeting

November 14-15, 1975

The South Dakota Ornithologists' Union met at the Science Center at Dakota State College, Madison, for their social hour on Friday evening and for the papers session on Saturday. Dr. Robert Buckman was in charge of meeting and program arrangements. Papers presented on Saturday morning included:

"Some Changes in the Breeding Birds of Minnehaha County Over the Past Sixty Years," G.W. Blankespoor and Herbert Krause.

"A Federal WPA Prairie Restoration Area and its Breeding Birds," G.W. Blankespoor.

"The American Goshawk in the Black Hills National Forest," Paul Bartelt.

"Feeding Behavior in Nesting Red-tailed Hawks," Curtis J. Orde.

The Board of Directors meeting in the afternoon followed the general business session. Members with free time took part in a field trip in the Madison area. Their check-lists included a Whistling Swan, some geese, several duck species, Ring-billed Gulls, B. Jay, Am. Robins, G-c Kinglet, juncos, and Tree Sparrows.

Two excellent Ducks Unlimited films were shown to members attending the Friday social hour and the Saturday evening banquet.—(Ed.)

Registrants at the meeting:

Brookings: Nelda (Mrs. David J.)

Holden, Mr. and Mrs. Kenneth Husmann.

Bruce: Esther (Mrs. Richard) Edie.

Clear Lake: Bruce K. Harris.

Highmore: June Harter.

Hurley: Carol (Mrs. Enoch) Breen.

Madison: Robert Buckman, Ruth Habeger, Mr. and Mrs. Laurence Kruger.

Meckling: William E. Lemons.

Rapid City: Mr. and Mrs. L.M. Baylor, Dr. N.R. Whitney.

Sioux Falls: G.W. Blankespoor, Herbert Krause.

Spearfish: Mr. and Mrs. Tom Hays.

Vermillion: Paul Bartelt, Mr. and Mrs. Byron Harrell, Mr. and Mrs. Curtis Orde, Mrs. Adelene Siljeborg.

Yankton: Mr. and Mrs. Willis Hall.

SDOU BUSINESS MEETINGS AT MADISON

The deliberations of the membership at its general business meeting and of the Board of Directors at its separate meeting are, at the president's suggestion, presented in the following summary.

At the present time, the organization's financial condition is good:

Funds on hand at the beginning of 1975	\$ 441.31
Income from 1975 dues	\$1,091.00
Income from other sources	\$ 569.47
<hr/>	
Total	\$2,101.78
Disbursements	
Total	\$1,035.05
Total amount in checking account	\$1,066.73
Total amount in CD	\$ 681.72
<hr/>	
Total worth	\$1,748.45
Total amount in savings account of W.H. Over Museum	\$ 841.83

Other reports were given: (1) on attempts to sell back issues of *Bird Notes*; (2) on plans for the 1976 Spring Meeting at the Bob Marshall Organizational Camp in Custer State Park on the Memorial Day weekend; (3) on the progress of the hard-working Check-list Committee, which expects to have the



—Photos Courtesy of Willis Hall

Snowy Owls at Gavin's Point

new book *Birds of South Dakota* printed by Spring Meeting time; and (4) on the recommendations of the nominating committee for the election of board members (the present board was re-elected and a vacancy was filled). A preliminary discussion was held about Dr. Whitney's announcement that the Cooper Club, a professional ornithological society based in California, has expressed a wish to have a joint spring meeting with SDOU—perhaps in 1977. It was also reported that the *Index to South Dakota Bird Notes* (Vols. XXI-XXV) is almost completed and the SDOU membership has slightly increased.

At the Board of Directors' meeting that followed, that body first decided that the places of all future annual meetings should be determined one year in advance and the meeting dates six months ahead. Furthermore, the vice president will serve as a meeting coordinator with local committees and supply them with a list of suggestions to aid them in their planning. Nelda Holden then invited SDOU to Brookings for its 1976 Fall

Meeting and the acceptance of this invitation was announced that evening at the banquet.

Officers elected for 1976-77 were Nelda Holden, president; Bill Lemons, vice president; Esther Edie, secretary; and Les Baylor, treasurer. Herman Chilson will continue as librarian and June Harter as editor of *Bird Notes*. During a discussion of the problem of what to do with the accumulating surplus copies of *Bird Notes* the board received several suggestions which Bruce Harris was appointed to implement. Opinions about the appropriate number of research papers presented at fall meetings were requested for guidance in planning future programs. The need of a membership chairman was expressed. Finally, reforms of SDOU by-laws controlling the tenure of board members were considered at length. It was generally felt that a greater interest in SDOU would be stimulated by a broader representation of the membership on the board, but actual changes were deferred until a later time.—W. Lemons, Meckling.

General Notes of Special Interest

LONG-TAILED JAEGER: NEW RECORD FOR SOUTH DAKOTA—About 9:00 a.m. on October 3, 1975, C.J. Ritts and I were inspecting the dike below Pool 7 on LaCreek National Wildlife Refuge, Bennett County, South Dakota, when I noted an adult jaeger about 220 yards out on Pool 7. I am familiar with the three species of jaegers because I spent a summer on Hudson Bay.

When we studied this bird with 7x50 binoculars and 15-60 x balscope Jack Ritts pointed out that its central tail feathers extended more than five inches beyond the other tail feathers. After consulting "Birds of North America" (Robbins et al.), we concluded the bird was a Long-tailed Jaeger.

We notified Albert Ridgway and Glen Good, who also looked at the jaeger with 7x50 binoculars and 20x spotting scope, checked the same field guide and confirmed our identification.

The jaeger made two extended flights but returned to the same area during the hour that we watched it. I could not find the bird that evening (nor later) when I wished to show it to my wife.

Apparently there are no previous records of a Long-tailed Jaeger in South Dakota, but the A.O.U. Check-list (Fifth Edition) lists it as accidental in Iowa and Nebraska, and "Charadriiform Birds of Cheyenne Bottoms," Part I and II, by Parmelee, Schwilling, and Stephens (Kansas Ornithological Society Bulletin, September 1969) lists a female collected June 23, 1955 by Moshy and Linn.—Harold Burgess, Manager, LaCreek National Wildlife Refuge. Martin 57551.

TRUMPETER SWANS AT LACREEK N.W.R.—The Trumpeter Swans have had a difficult two years with drought and spring blizzards, but they returned in the autumn of 1975 with 29 cygnets (one a white rather than a gray cygnet phase). The flock of about 126 also contained two adult Whistling Swans—Harold Burgess, Manager, LaCreek N.W.R., Martin 57551.

+++

TWELVE SNOWY OWLS NEAR YANKTON—On December 13, 1974, a cloudy day, with the temperature ranging between 32 degrees and 36 degrees, we made our discovery of Snowy Owls at Gavin's Point Dam. The first owl seen was a dusky female sheltering behind a tumbleweed from the brisk northwest breeze. Although alert to our presence, she showed no intention of leaving her place where not only was she sheltered from the breeze coming across the expanse of icy lake, but she was in an excellent position to view the some 14,000 ducks far out on the remaining open water. The light was poor for my slow lens, but before leaving her I tried a number of slow exposures. It was a pleasant surprise to find farther along the dam that there were other owls. Some like the first were on the dam itself, while others were out on the ice. Some of the latter were quite close to the open water and the ducks. After a careful observation of the owls, I again went from one end of the dam to the other and determined that there were at least six there.

On the following day I observed and photographed the Snowy Owls at the dam from 8:00 a.m. to 2:30 p.m. Early in the morning I tried waiting in the car at the middle of the dam, hoping that an owl

would venture nearer me. Later, a friend came along and offered to drive me slowly along so that I might try some pictures near the road of owls which had been flying up whenever the car had come to a halt. He also informed me of other owls that I had not seen—one on a large piece of machinery by the marina. This owl remained on his perch for more than three hours as I checked and rechecked the numbers.

In all the time I was out there with the owls, I saw only one that was feeding; and that was on the carcass of a duck frozen in the lake not far from the south end of the dam. Frequently an owl near the dam road, frightened by a speeding or noisy vehicle, would fly up and alight out on the ice; or after going low over the ice it would come around to alight on another part of the dam. I watched one as it bathed in the narrow strip of water between the frozen lake and the shore. After bathing he returned to his perch on the large rocks nearby.

In all I counted twelve owls. They were on the dam itself; on the rocks, machinery, and logs at the north end of the dam; and out on the ice. Most of the owls were females or immatures, liberally marked.—Willis Hall, 1111 Douglas Ave., Yankton 57078.

+++

BARROW'S GOLDENEYE FOR A SECOND WINTER AT RAPID CITY—In *Bird Notes* for September, 1971 (23:79-80), I reported on the adult male Barrow's Goldeneye (*Bucephala islandica*) that wintered at Canyon Lake in western Rapid City from 29 November 1970 through 21 March 1971. On 7 November 1971, an adult male Barrow's Goldeneye (from all appearances, the very same individual) returned to Canyon Lake. Curiously, 7 November 1971 was the first day, for the winter season, on which I recorded Common Goldeneyes—a flock of about 60—at Canyon Lake, and in the winter of 1971-72, the Barrow's Goldeneye was less ex-

clusive about his associating with the Common Goldeneyes than was the one during the winter of 1970-71. Possibly the Barrow's Goldeneye migrated with the Common Goldeneyes in the spring of 1971, remained with them through the summer, and returned with them the following winter.

In any event, I observed the Barrow's Goldeneye on 26 separate occasions from 7 November 1971 through 10 March 1972, and I naturally looked forward to the chance that the species would return in subsequent winters. The flood of June 1972 shattered such expectations with the lake's destruction. The delight of observing this species, along with numerous other exceptional birding experiences at Canyon Lake over the years, makes one hope all the more for the lake's eventual restoration. Rapid City's plan, as of November 1975 is to complete a new dam for Canyon Lake in 1976 or 1977.—L.M. Baylor, SDSM&T, Rapid City.

+++

COMMON FLICKER BEHAVIOR—Common Flickers (Yellow-shafted) have a nest cavity in a willow in my yard; a martin house appropriated by House Sparrows is within 25 feet of the willow. That is the setting for what apparently is unusual flicker behavior.

Frequently during the nesting seasons of the past three years, (1973-75) one of the flickers claiming the willow nest cavity pulled nest materials from the sparrow nests in the martin house and tossed them on the ground. The litter generously covered an area about 25 feet in diameter. As soon as the flicker departed the sparrows picked up every piece and placed it back in the nests.

The same performance also occurred on 31 July and 1 August 1975. My notes state that the bird was a male Common Flicker (Yellow-shafted).—June Harter, Highmore 57345.

(Continued on Page 80)

SOUTH DAKOTA BIRD NOTES

1975 Fall Season

Compilers—G. L. Steffen, B. J. Rose, J. Harter

Weather in South Dakota was unusually mild and dry until the November blizzard, with severe drought affecting all but the extreme southeast and northeast corners of the state. Marshes and shallow water areas dried up, resulting in concentrations of water fowl and shorebirds in remaining waters, particularly in some of the northeast counties.

Heavy snow and blizzard conditions struck the eastern and south central parts of the state on November 19 and 20, followed by below normal temperatures throughout the state for the rest of the period.

Migration of many species was slow, and later than usual. Noteworthy records for the period included the Long-tailed Jaeger at LaCreek N.W.R.—a new state record; the LeConte's Sparrows in the southeast; and all three species of scoters in the Pierre area and Deuel Co., plus two species at Gavin's Point. The central and eastern parts of the state had good warbler and sparrow migrations—Willis Hall had 16 species of sparrows in Yankton and Clay Counties. Northern finches appeared in most areas from mid-October to mid-November. Altogether an impressive list of 245 species was reported for the fall period of August 1 to November 30.

1975 FALL SEASON

LOONS THROUGH CORMORANTS

Common Loon—Latest dates: 11-6 Meade Co., JLM; 11-8 (3) Gavin's Point, WH; 11-15 (3) Fall River Co., JLM; 11-16 (1) Deuel Co., BKH.

Red-necked Grebe—8-24-30 last observations at Waubay N.W.R., KFH.

Horned Grebe—Latest date: 11-5 (1) Gavin's Point, WH; also reported from Deuel, Meade, and Custer Counties.

Eared Grebe—East: 10-5 to 10-25 (3) Deuel Co., 11-14 (1) Roberts Co., BKH; 10-25 (2) Minnehaha Co., GWB; 11-9 (1) Gavin's Point, WH. West: 10-26 to 11-6 (77) Meade Co., JLM.

Western Grebe—East: 9-4 peak (100), last seen 10-22, Waubay N.W.R., KFH; 10-9 (1) Gavin's Point, WH; 11-14 (2) Roberts Co., BKH. West: 9-27 to 11-6 (22) Meade Co., 10-11 (3) Butte Co., 11-15 (2) Fall River Co., JLM.

Pied-billed Grebe—8-17 to 11-1 total (49) Black Hills area, JLM & NRW; 8-26 peak (400) last seen 11-6, Waubay N.W.R., EJJ & KFH; peak day 10-1 (34), last date 11-17, Gavin's Point, WH; 10-12 (7) Gregory Co., GLS; 11-26 (1) Deuel Co., found on ice and removed to Big Stone L., BKH.

White Pelican—8-26 peak (300), last seen 11-9, Waubay N.W.R., EJJ & KFH; 9-20 (100+) Minnehaha Co., GWB; 10-8 (40) Deuel Co., BKH; 10-9 (6) Moody Co., NJH; 10-15 Minnehaha Co., KE; 11-7 (1) Davison Co., JLM.

Double-crested Cormorant—9-2 peak (300), last seen 11-24 Waubay N.W.R., EJJ & KFH; 11-6 (32), 11-18 (1) Gavin's Point, WH; 9-3 (75), 10-1 (100) Deuel Co., BKH; 10-13 (70) Brookings Co., CAT; 10-26 last date Meade Co., 11-10 (6) Buffalo Co., JLM.

HERONS AND IBIS

Great Blue Heron—8-12 peak (14), last seen 11-6 Waubay N.W.R., KFH; 8-15 to 9-17 total (7) Perkins Co., AH; 8-24 to 11-1 total (22) Yankton Co., WH; 9-5 to 11-9 total (14) Gregory Co., GLS; 10-20 (1), 10-23 (4) Clay Co., KJH; 10-2 (1) last date Meade Co., JLM; 11-10 (1) Buffalo Co., JLM; 11-18 (1) Deuel Co., BKH.

Great Egret—9-2 peak (30), last seen 10-15 Waubay N.W.R., KFH; 8-21 to 9-25 (8) in five locations Deuel Co., BKH; 9-14 (64) Fox L., Deuel Co., Mrs. Adolph Anderson (fide BKH).

Little Blue Heron—8-11 (1 ad.) Sand Lake N.W.R., Brown Co., R.T. Larson (fide EMS).

Green Heron—8-2 (1) Bon Homme Co., 8-31 (1) Yankton Co., WH; 9-6 (1) Fort Pierre, JLM; 10-19 to 10-27 (1 imm.) Rapid City, RCK & BHAS.

Black-crowned Night Heron—8-12 peak (6), last seen 11-1 Waubay N.W.R., EJJ & KFH; 8-13 (11) Minnehaha Co., GWB; 8-31 (1 imm.), 9-14 (2 imm.) Yankton Co., WH.

American Bittern—10-18 (2) Deuel Co., BKH; 10-24 (4), last seen 11-6 Waubay N.W.R., KFH.

White-faced Ibis—10-15 (1) Minnehaha Co., present at least one week, KE.

SWANS, GEESE, DUCKS

Whistling Swan—10-10 (7) Codington Co. (Cons. Officer Dave Wicks), 11-14 (19) Roberts Co., BKH; 11-13 peak (234), last seen 11-22

- Waubay N.W.R., EJF & RRJ; 11-15 (1) Lake Co., CB; (2) during period, LaCreek N.W.R., RAW.
- Trumpeter Swan**—(94 ad., 28 imm.) LaCreek N.W.R., RAW.
- Canada Goose**—10-21 peak (7575), a few still present 11-27 Waubay N.W.R., EJF; 11-7 (500) Lewis & Clark L. 11-9 (300) Jackson Co., JLM; 11-9 (300) Perkins Co., AH; 11-9 (55) Gregory Co., GLS.
- White-fronted Goose**—10-19 (32) Deuel Co., BKH; 10-22 (200) Gregory Co., GLS; 10-22 (50) Gavin's Point, WH; 10-23 (2000+) Lyman Co., RLH.
- Snow Goose**—10-16 peak (16,000), last seen 11-15 Waubay N.W.R., EJF & KFH; 10-19 (75) Clay Co., KJH; 10-25 (155) Clay Co., 11-11 (200) Yankton Co., WH; 11-16 (150) Lake Co., BKH.
- Mallard**—10-29 peak (18,450), last seen 11-24 Waubay N.W.R., EJF & KFH; 9-14 (55), 11-8 (4840) Gavin's Point, WH; 11-9 (50) Pierre, JLM; 11-23 (75) Deuel Co., BKH.
- Gadwall**—9-20 (4), 10-26 (3) Yankton Co., WH; 9-20 (100+) Minnehaha Co., GWB; 10-16 peak (1500), last seen 11-6 Waubay N.W.R., EJF; 9-23 to 11-16 (33) Rapid City area, BHAS; 10-26 to 11-6 (45) Meade Co., JLM; 10-29 (9) Custer Co., NRW.
- Pintail**—10-23 peak (1300), last seen 11-6 Waubay N.W.R., EJF; also reported from Rapid City, and Meade, Roberts and Yankton Counties.
- Green-winged Teal**—9-14 (5), 11-1 (1) Yankton Co., WH; 10-9, 10-21 flocks of (100) Deuel Co., BKH; 11-5 Fall River Co., JLM.
- Blue-winged Teal**—8-14 peak (18,235), last seen 10-29 Waubay N.W.R., EJF; also reported from Clay, Yankton, and Meade Counties.
- American Wigeon**—9-20 (47), 11-29 (1) Yankton Co., WH; 9-20 (100+) Minnehaha Co., GWB; 10-1 peak (5200), last seen 11-12 Waubay N.W.R., EJF & KFH; 10-9 (150) Deuel Co., BKH; 9-24 to 10-29 (32) Custer Co., NRW; 11-15 (64) Fall River Co., JLM.
- Northern Shoveler**—11-6 peak (1700), last seen 11-16 Waubay N.W.R., EJF & KFH; also reported from Yankton and Roberts Counties.
- Wood Duck**—9-4 peak (60), last seen 10-15 Waubay N.W.R., EJF; also reported from Bon Homme, Yankton, Minnehaha, and Meade Counties.
- Redhead**—10-21 peak (6500), last seen 11-16 Waubay N.W.R., EJF & KFH; 10-25 (100+) Minnehaha Co., GWB; 10-25 (400-500), a decrease, usual peak is 2000-3000, Deuel Co., BKH; 10-26 (2), 11-9 (9), 11-16 (5) Gavin's Point, WH; 10-24 (250) Lyman Co., RLH; 10-8 to 11-8 total (158) on 2 lakes, Meade and Custer Counties, JLM & NRW.
- Ring-necked Duck**—10-18 (25) only sighting Waubay N.W.R., KFH; 10-8 (1 pr.) Custer Co., NRW.
- Canvasback**—10-21 peak (7400), last seen 11-18 Waubay N.W.R., EJF & KFH; 10-23 (150-200) L. Alice, Deuel Co., 11-14 (250) Big Stone L., Roberts Co., BKH; 10-26 (2) Meade Co., JLM; 11-16 (2 f.) Gregory Co., GLS.
- Lesser Scaup**—10-25 (est. 10,000) Big Stone L., Roberts Co., BKH; 10-29 peak (4525), last seen 11-16 Waubay N.W.R., EJF & KFH; 10-26 to 11-2 (78) on 2 lakes, Meade Co., JLM; 11-17 (2) Gavin's Point, WH.
- Common Goldeneye**—10-16 peak (250), last seen 11-16 Waubay N.W.R., EJF; 11-26, 11-29 (10) Gavin's Point, WH.
- Bufflehead**—11-6 peak and last date (625) Waubay N.W.R., EJF; 11-15 (3) Gregory Co., GLS; 11-17 (9) Gavin's Point, WH.
- White-winged Scoter**—10-23 (1), 10-25 (2), 11-2 (3), all at L. Alice, Deuel Co., BKH; 11-8 (2) Missouri R. near Pierre, 11-24 (1) shot near Pierre, BJR; 11-8 (1) Gavin's Point, WH.
- Surf Scoter**—10-18 (1) shot, 10-26 (1) shot, Pierre area, BJR; 10-23 (1) L. Alice, Deuel Co., good view on water and in flight, BKH.
- Black Scoter**—10-18 (3) Missouri R. below Pierre, BJR; 10-22 at least (2) and probably (3) at Fish L., Deuel Co., specimen taken, BKH; 11-3 (3) Gavin's Point, WH.
- Ruddy Duck**—9-21 to 10-26 (50) on 2 lakes, Meade Co., JLM; 10-25 (100+) Minnehaha Co., GWB; 11-6 peak and last date (220) Waubay N.W.R., EJF; 11-9 (6) Gregory Co., GLS.
- Hooded Merganser**—10-26 (1) Meade Co., JLM; 10-29 (2) Waubay N.W.R., EJF; 11-11 to 11-16 (3) Deuel Co., BKH; 11-16 (1 pr.) Gregory Co., GLS.
- Common Merganser**—10-26 (2), 11-29 (1918) Gavin's Point, WH; 11-15 (1) Fall River Co., JLM; 11-18 (25) only sighting, Waubay N.W.R., KFH.
- Red-breasted Merganser**—11-5 (5), 11-29 (1) Gavin's Point, WH; 11-8 (1) Lewis & Clark L., JLM.

HAWKS AND FALCONS

- Turkey Vulture**—8-1 (15) Butte Co., JLM; 8-3 to 9-27 total (29) Black Hills area, BHAS; 8-1 to 10-1 (2) Badlands, RAW; 9-5 (2), 9-24 (1) Lyman Co., WCT.
- Goshawk**—11-2 (1) Deuel Co., BKH.
- Sharp-shinned Hawk**—9-1 to 11-26 (4) Rapid City area, BLG, EMS, LAW; 9-7 (1), 10-18 (2) Lyman Co., WCT; 10-13 (1) Hyde Co., JH.
- Cooper's Hawk**—8-17 (1) Spearfish Canyon, Lawrence Co., NRW; 8-17 (1 imm.) Penn. Co., JLM; 9-15 (1) Meade Co., EMS; 9-24 (1) Lyman Co., WCT; 9-27 (1) Newton Hills, Lincoln Co., KE; 9-25 (1) Faulk Co., RLH; 10-1 (1) Gavin's Point, WH; 11-9 (1), 11-21 (1) Gregory Co., GLS.
- Red-tailed Hawk**—Reported from Black Hills area; Bon Homme, Yankton, Minnehaha, Day, Gregory, Lyman, Stanley, and Jackson Counties. Latest dates for all areas were in mid-November.
- Swainson's Hawk**—8-10 (1), 8-17 (2) Penn. Co., 9-21 (1) Meade Co., EMS, JLM; 8-17 to 10-18 total (10) Gregory Co., GLS; 8-26 (6), last seen 10-29 Waubay N.W.R., KFH & EJF; 8-31 (3) Harding Co., RLH; 9-3 (1) Badlands, RAW; 11-4 (1) Yankton Co., WH; 10-12 (1) only sighting Deuel Co., BKH.
- Rough-legged Hawk**—10-4 to 11-30 (2) Minn. Co., GWB; 10-11 to 10-23 total (9) Black Hills area, BHAS; 10-16 to 11-28 total (8) Deuel Co., BKH; 10-26 (1) Yankton Co., WH; 11-6 (1) Aurora Co., 11-8 (2) Lyman Co., 11-10 (1) Hughes Co., JLM; 11-14 (1) Waubay N.W.R., KFH; 11-15 (1) Minn. Co., KE; 11-16 (1) Buffalo Co., JH.

Ferruginous Hawk—8-17 to 10-19 total (5) Black Hills area, BHAS; 9-25 (1) Hyde Co., 10-4 (1) Lyman Co., 10-11 (1), 10-13 (1) Meade Co., RLH.

Golden Eagle—Reported from Black Hills area (10), Waubay N.W.R. (1), and from Harding (8 and 10), Perkins (3), Stanley (1 imm.), Sully (2), Lyman (8), Hyde (1), and Turner (1) Counties.

Bald Eagle—10-19 (1 imm.), 10-22 (1) Sully Co., RLH; 11-15 (3) Fall River Co., JLM; 11-26 (1) Perkins Co., AM; 11-29 (1 ad. -1 imm.) Gavin's Point, WH.

Marsh Hawk—8-3 to 8-30 total (40) Black Hills area, BHAS; 9-6 to 11-10 (6) Stanley Co., (4) in other areas, JLM; 9-7 to 11-1 total (12) Yankton Co., WH; 9-8 to 11-8 total (7) Gregory Co., GLS; 10-29 (10), last seen 11-25 Waubay N.W.R., KFH; also reported from Lyman, Deuel, and Hyde Counties.

Osprey—9-15, 9-16 (1) Rapid City, JLM, RCK; (1) on 9-15, 10-12, 10-18, and 10-23 Gregory Co., GLS; 10-8 (1) Meade Co., RLH.

Gyr Falcon—11-15 (1) dark phase, Lyman Co., WCT.

Prairie Falcon—8-29 (1f), 10-21, 10-22 (1) Deuel Co., BKH; 9-13 (1), 10-11 (1) Stanley Co., 9-27 (1), 10-25 (1) Lyman Co., 10-11 (1) Meade Co., 10-22 (1) Chas. Mix Co., 10-26 (1) Sully Co., 11-1 (1) Custer Co., RLH; 10-6 (1), 10-28 (2) Lyman Co., WCT; 8-5 (1) Penn. Co., 10-1 (1) Harding Co., 10-1 (1) Meade Co., 10-5 (1) Penn. Co., JLM; 11-5 (1) Penn. Co., NRW.

Peregrine Falcon—10-20 (1) Union Co., WH.

Merlin—8-30 (4) in flight, Butte Co., C. Ranier & A. Abel (fide EMS).

American Kestrel—10-10 (25), last seen 10-24 Waubay N.W.R., KFH; also reported from Clay, Yankton, Gregory, Hyde, and Stanley Counties, and Black Hills area.

GROUSE THROUGH COOTS

Sharp-tailed Grouse—Reported from Harding, Meade, and Perkins Counties.

Bobwhite—8-24 to 11-28 total (10) Yankton Co., WH; 9-30 a covey of (12) and one of (18) s. Gregory Co., 11-15 (15), 11-24 (12) Burke Lake, Gregory Co., GLS.

Gray Partridge—11-23 (6 coveys) in one township, Deuel Co., BKH; also reported from Minnehaha Co., KE & GWB.

Ring-necked Pheasant—Decreased numbers over all of So. Dak., 1975 hunting season much reduced.

Turkey—9-14 to 10-18 total (95) Black Hills area, BHAS.

Sandhill Crane—10-7 to 11-19 total (30,000), peak days 11-9 (12,000+) and 11-19 (10,000) Black Hills area, BHAS; Lyman Co.: 10-15 to 11-15 total (5500) peak 10-27 (3800), WCT; 10-23 (1500), 11-1 (2000), RLH; Gregory Co.: 10-20 total (7600), peak 10-27 (6000), GLS; Hyde Co.: 10-9 to 11-8 total (875+), peak 11-8 (450), JH; Deuel Co.: 11-1 (one flock), Walter Rose; 11-25 (1), heavy snow cover, -8 degree temp., BKH.

Virginia Rail—8-14 (3 ad. -3 imm.) in one slough, Deuel Co., BKH; 11-3 (1) DOR, Gavin's Point., WH.

Sora Rail—8-14 (3 ad. -1 imm.) in one slough, Deuel Co., BKH; 8-24 (2) Burke Lagoon,

Gregory Co., GLS; 10-6 last date seen or heard, Waubay N.W.R., KFH.

American Coot—9-7-11-15 total (750) Black Hills area, BHAS; 9-8 (400) L. Alice, peak of 2-3000 birdseach in 4 areas by 10-9, Deuel Co., BKH; 10-1 peak (790), last seen 11-8 (3) Gavin's Point, WH; 10-9 peak (10,500) last seen 11-16 Waubay N.W.R., EJF; 11-10 (6) Lake Sharpe, JLM.

SHOREBIRDS

Semipalmated Plover—8-13 (1) Waubay N.W.R., KFH; 8-19 (4) Clay Co., KJH.

Killdeer—8-12 peak (4000), last seen 11-18 Waubay N.W.R., KFH; also reported from Deuel, Clay, Yankton, Tripp, and Davison Counties, and Pierre.

American Golden Plover—10-17 (1), 10-26 (4) Clay Co., WH.

Black-bellied Plover—8-14 (1) Waubay N.W.R., KFH; 11-8 (4) Sand Creek, Bon Homme Co., JLM.

Ruddy Turnstone—8-12 (5) Waubay N.W.R., EJF.

American Woodcock—10-19 (1) flushed by Royal Hanson and Herman Hull, Merrill, Wisc., while hunting in Hyde Co., reported by Mrs. Jensen (fide JH). 11-14 (1), late record, reported by Jack Opitz (GF&P) at shooting area in Marshall Co., bird flushed from spring area (fide BKH).

Common Snipe—8-14 (7) in drying slough, suggesting reproduction in Deuel Co. this year in spite of drying conditions, BKH; 8-29 (1) Burke Lagoon, GLS; 9-4 (4), 9-25 (1) Brown Co., 9-13 (1) Jones Co., RLH; 9-13 (1) Badlands, RAW; 10-2 (1) Gavin's Point, WH; 10-23 (25) in a slough, Waubay N.W.R., KFH; 11-1 (25) Minn. Co., GWB.

Long-billed Curlew—8-10 (1) Meade Co., JLM.

Upland Sandpiper—8-19 (2) last date Waubay N.W.R., KFH.

Spotted Sandpiper—8-1 (1) Meade Co., 8-5 (1) Penn. Co., JLM; 8-2 (5) Bon Homme Co., 8-18 (3), 8-22 (1) Yankton Co., WH; 8-13 to 9-13 (8) Minn. Co., GWB; 9-12 (1) Badlands, RAW; peak (25) Waubay N.W.R., KFH; 9-6 (1) L. Sharpe, JLM; 9-30 (1) Gregory Co., GLS.

Solitary Sandpiper—8-6 to 8-19 total (8) Penn. Co., Meade Co., RCK, JLM; 8-24 (3) Gregory Co., GLS.

Willet—8-12 (24), last seen 8-19 Waubay N.W.R., KFH.

Greater Yellowlegs—8-13 (1), 10-4 (1) Minn. Co., GWB; 8-24 (6) Gregory Co., GLS; 9-7 to 10-12 total (7) Penn. & Meade Cos., JLM.

Lesser Yellowlegs—8-10 to 8-24 total (32) Penn. & Meade Cos., JLM; 8-24 (40) Gregory Co., GLS; 8-24 to 9-14 total (17) Yankton Co., WH; 8-26 peak (7000), last seen 11-20 Waubay N.W.R., KFH.

Pectoral Sandpiper—8-9 (15) Deuel Co., BKH; 8-12 peak (1000), last seen 8-19 Waubay N.W.R., KFH; 8-17 (10) Minn. Co., GWB; 8-27 (6) Burke Lagoon, GLS; 11-6 (1) Davison Co., JLM.

Baird's Sandpiper—8-17 to 8-24 total (22) Penn. & Meade Cos., JLM; 8-19 last date Waubay N.W.R., KFH; 9-12 (1) Badlands, RAW; 8-9 Deuel, BKH.

Least Sandpiper—8-18 (5) Penn. Co., JLM.
Long-billed Dowitcher—8-11 (3) Penn. Co., JLM; none in Deuel Co., BKH; 10-15 last date Waubay N.W.R., KFH.
Stilt Sandpiper—8-9 (25) Deuel Co., BKH; 8-27 (1) Minn. Co., GWB.
Marbled Godwit—9-2 last date Waubay N.W.R., KFH.
American Avocet—8-17 to 8-31 total (72), peak of (50) on 8-21 Meade Co., JLM, EMS; 8-30 (6) Harding Co., C. Ranier & A. Abel; 9-23 (35), last seen 10-31 Waubay N.W.R., KFH.
Wilson's Phalarope—8-10 to 11-10 total (58) Black Hills area, JLM, EMS; 8-9 (15) Deuel Co., BKH; 8-19 peak (200), last seen 9-2 Waubay N.W.R., KFH; 8-24 (20) Gregory Co., GLS.
LONG-TAILED JAEGER—This is a new record for South Dakota. Observed Oct. 3, 1975 at LaCreek N.W.R. by Harold Burgess et al. See "General Notes" for details.

GULLS, TERNS, CUCKOOS

Herring Gull—9-14 (2), 11-28 (37) Gavin's Point, WH; 11-10 (2) L. Sharpe, (3) Ft. Thompson, JLM; 11-21 (2) Deuel Co., BKH.
Ring-billed Gull—8-10 to 11-10 total (58) Meade Co., JLM; 8-26 peak (400) Waubay N.W.R., KFH; 8-18 (2), 9-20 (21), 11-13 (356), 11-28 (105) Gavin's Point, WH; 9-21 (4) Badlands, RAW; 11-7 (60) Davison Co., JLM.
Franklin's Gull—8-3 to 8-19 (17) Meade Co., JLM, scarce in Black Hills area; 9-9 peak (1000's), last seen 9-23 Waubay N.W.R., EJJ; 10-22 (2700) Gavin's Point, 11-1 (20) ne. Yankton Co., WH; 11-2 last date Deuel Co., BKH.
Bonaparte's Gull—10-10 (1), 10-22 (1) Deuel Co., BKH.
Common Tern—8-1 (1) Butte Co., JLM; 9-2 peak (60), last seen 10-15 Waubay N.W.R., KFH; 9-20 (2) Gavin's Point, WH; 10-24 (2) Deuel Co., BKH.
Black Tern—8-3 (3) Meade Co., JLM; 8-2 (11) Bon Homme Co., WH; 8-19 (12) Clay Co., KJH; 8-26 peak and last date (80) Waubay N.W.R., KFH.
Mourning Dove—9-2 peak (2800), last seen 11-26 Waubay N.W.R., KFH; 9-7 (2) nestlings banded, Brookings Co., NJH. Last dates: 10-4 Meade Co., JLM; 10-10 Hyde Co., JH; 11-18 Gavin's Point, WH.
Yellow-billed Cuckoo—9-9 (1) Rapid City, EAS.
Black-billed Cuckoo—8-4 (2), 8-19 (1) Perkins Co., AH; 9-3 (1 ad., 1 imm.) Rapid City, EMS.

OWLS TO KINGFISHER

Screech Owl—8-20, 10-29 heard, Clay Co., KJH; 8-15 (1), 8-16 (2), 8-26 (1), 9-2 (1) Yankton Co., WH; 10-4 (1) in flicker house, present several days a week rest of period, Burke, GLS; 10-31 (1) Turner Co., CB; 11-2 (2) Brookings Co., ERE.
Great Horned Owl—Reported from all parts of the state.
Snowy Owl—11-16 (1) Waubay N.W.R., 11-23 (1) Marshall Co., KFH; 11-23 (1) Sully Co., L. Lochard, 11-27 (1) Sully Co., P. Gaumeyer (fide RLH); 11-25 (1) Perkins Co., AH; 11-25 (1) Deuel Co., BKH.
Burrowing Owl—10-8 (1) near Rapid City, JLM; 9-24 (2) Hyde Co., RLH.

Long-eared Owl—10-23 (1) Lyman Co., 11-27 (1) Sully Co., RLH.
Short-eared Owl—11-9 (1) Deuel Co., Mark Harris; 11-28 (1) Turner Co., CB.
Saw-whet Owl—10-15 (1) caught by hand and photographed in ne. Brookings Co., Vernon Kirk (fide NJH).
Poorwill—9-12 (2) Badlands, RAW.
Common Nighthawk—8-8 (10) Gregory Co., GLS; 8-19 to 9-14 total (200), on 8-19 flocks of about 100 overhead, Rapid City, EMS; 8-20 (20) circling over yard, Perkins Co., AH; 8-29 (15), 9-6 (1) Yankton, WH; present until 9-9 Badlands RAW; down in numbers, Deuel Co., BKH.
Chimney Swift—8-11 (11), 9-24 (14), 10-1 (2) Yankton, WH.
White-throated Swift—8-17 (30) Spearfish Canyon, Lawrence Co., NRW; 8-30 (15) Mt. Rushmore; present until 9-24 Badlands, RAW; 10-4 (1) Ft. Pierre, Stanley Co., east of normal range, RLH.
Hummingbird—8-8 to 9-15 (18) sightings, more than usual, then late dates of 10-4, 10-13, 10-14 (1) Rapid City, BHAS.
Ruby-throated Hummingbird—8-5 (1), 9-2 (2) Waubay N.W.R., RRJ; 8-13 to 9-30 (1) sometimes (2) almost daily at feeder in Burke, then a late date of 10-12, 10-13 (1), (fide GLS); 9-1 to 9-10 (3) Clear Lake, Deuel Co., BKH; 9-2 (2) Brookings, CP; 9-4 (1) Hurley, Turner Co., CB; 9-5 (4), 9-6 (2) one a male, 9-21 (2) Yankton, WH; 9-9 (1) Highmore, spent 15 minutes trying to reach plastic flowers on other side of window, Mrs. Walt Prinz (fide JH).
Belted Kingfisher—Common Black Hills, BHAS; 8-10 (2) Belle Fourche, IW; 9-6 (4) Pierre area, JLM; 9-21 to 11-29 total (7) Yankton area, WH; 9-15, 10-12 (1) Burke Lake, GLS.

WOODPECKERS

Common Flicker—Reported from all areas. Migration dates were in last week of Sept. and first week of Oct., with a few birds remaining into November. 9-23 migration flocks of (12) common, most ever seen, Belle Fourche, IW.
Red-bellied Woodpecker—10-11 to 11-26 (1) almost daily at feeder, Clay Co., KJH; 10-2 (1) Yankton Co., WH; 11-15 (1) first record for our area, clearly seen and easily identified. Brookings Co., ERE.
Red-headed Woodpecker—8-1 to 8-17 total (21) Black Hills area, BHAS; 8-6 to 9-28 total (17) Yankton Co., 8-2 (14) Bon Homme Co., WH; 9-11 last seen Badlands, RAW; 8-17 to 9-21 (10) Gregory Co., GLS; 10-26 Hyde Co., Vera Raske; 11-30 (1) Turner Co., CB.
Lewis' Woodpecker—9-1 to 9-7 (6) Rapid City area, BHAS.
Yellow-bellied Sapsucker—9-15 (1) Rapid City, RCK; 9-21 (1 imm.) Burke Lake, GLS; 9-22 (1) Badlands, RAW; 9-24 (1 imm.) Hyde Co., JH; 9-25 (1 imm.) banded, Brookings Co., NJH.
Hairy Woodpecker—Reported from all areas. 11-4 (1) four-year old bird recaptured, Brookings Co., NJH.
Downy Woodpecker—Most feeders have one or two pairs present daily.

FLYCATCHERS, SWALLOWS

- Eastern Kingbird**—8-2 to 9-9 total (60) Penn. Co., BHAS; 8-31 (9) last seen, not common this year, Yankton Co., WH; other last dates: 8-27 Minn. Co., GWB; 9-1 Hyde Co., JH; 9-3 Badlands, RAW; 9-6 Pierre, JLM; 9-6 Gregory Co., GLS.
- Western Kingbird**—8-3 to 9-15 total (33) Penn. Co., BHAS; 8-22 (1 ad. 3 imm.) last date seen, Hyde Co., JH; 8-24 (4) last seen, rare this year, Yankton Co., WH; 8-26 last date seen Badlands, RAW; 8-27 last date Minn. Co., GWB; 9-6 (5) Pierre area, JLM.
- Great Crested Flycatcher**—8-1 to 8-15 (1) daily in yard, Yankton, WH.
- Say's Phoebe**—8-18 (1) Penn. Co., JLM; present until 9-3 Badlands, RAW; 9-20 (1) Yankton Co., WH.
- Willow Flycatcher**—8-21 to 9-15 total (4) Hyde Co., JH.
- Least Flycatcher**—8-22, 8-27 (1) Hyde Co., JH; 9-5 (1) Badlands, RAW.
- Eastern Wood Pewee**—8-13 (1) Minn. Co., GWB; 8-28 (1) Hyde Co., JH.
- Western Wood Pewee**—8-18 to 9-14 (7) plus (2) young being fed on a fence, Rapid City, GRB; 8-20 (1) Custer Co., NRW; 9-26 (1) Badlands, RAW.
- Horned Lark**—9-20 (1000's) migrating, Lawrence and Meade Cos., EMS; 10-7 to 11-2 (700) Meade Co., JLM, HJM; 11-17 (100's) in area before cold wave, Perkins Co., AH; 11-28 (100) Turner Co., CB; 10-12 (1), 11-28 (8) Yankton Co., WH.
- Violet-green Swallow**—8-1 to 9-5 total (13) Meade Co. and Rapid City, JLM, NRW.
- Tree Swallow**—8-2 (8) Bon Homme Co., WH; 8-17 (1) Butte Co., NRW.
- Bank Swallow**—9-13 last date Minn. Co., GWB.
- Rough-winged Swallow**—8-10 (1) Meade Co., NRW; 8-18 (2) Gavin's Point, WH.
- Barn Swallow**—9-14 (86) in 40 miles, 10-9 (1) Yankton Co., WH; other last dates: 8-19 Clay Co., KJH; 9-22 Badlands, RAW; 9-25 Hyde Co., JH; 10-4 Minn. Co., GWB.
- Cliff Swallow**—8-2 (90) Bon Homme Co., WH; 8-24 (2 ad., 1 very young) Meade Co., JLM, EMS; reduced numbers, 8-27 last date, Minn. Co., GWB.
- Purple Martin**—Most birds left the first two weeks in Aug.; 8-27 last date in Minn. Co., GWB; 8-29 last date in Burke, Gregory Co., GLS.

JAYS THROUGH WRENS

- Gray Jay**—8-17 to 10-20 total (18) Black Hills, NJE, NRW, LY, ATB, BLG.
- Blue Jay**—9-14 (2), 9-24 (2) all banded, Brookings Co., NJH; 10-14 (2) last date Hyde Co., JH; very numerous at Rapid City; 9-15 (3) Flagstaff Mt. area, Vanocker Canyon, about 5200 ft., which may be a high altitude observation, NRW.
- Black-billed Magpie**—Numerous along edge of Black Hills, singles appeared at Rapid City feeders, considered unusual, BHAS; 9-16 (1) first one seen since May, 10-23 (4) Perkins Co., AH; 9-14 (3), 10-4 (3) Yankton Co., WH; 10-12 (2) Harding Co., RLH; 10-3 (1) near Clear Lake, Deuel Co., Gordon Harris; 11-8 (6) Gregory Co., JLM.

Common Crow—Migration occurred the last week of Sept. and first three weeks of Oct., with the largest number for the period (3800) in Lyman Co., WCT.

Black-capped Chickadee—(12) daily at feeder, one eight-year old bird recaptured on 11-9, Brookings Co., NJH; also reported from Clay and Perkins Counties, Rapid City, Belle Fourche, Pierre, Burke, and Yankton.

White-breasted Nuthatch—11-9 (1) banded, Brookings Co., NJH; also reported from Black Hills, Badlands, Waubay N.W.R., and Clay, Turner, Yankton, Gregory, and Hyde Counties.

Red-breasted Nuthatch—9-8 to 10-17 total (7) all banded, Brookings Co., NJH; also reported from Black Hills, Badlands, Burke and Hurlley, plus early November dates from Brookings Co. (ERE), Yankton, and Clear Lake.

Brown Creeper—Feeders along streams and the edge of the pine hills averaged (1) daily, BHAS; 8-10 (1) Belle Fourche, IW; 9-22 (1), 10-13 (3) Hyde Co., JH; 10-13 (1) Brookings Co., NJH; 10-28 (2) Turner Co., CB; 10-23 (1), 11-26 (1) Yankton Co., WH; 11-28 present at feeder, Waubay N.W.R., RRJ.

Dipper—8-17 (7 ad. & imm.) Spearfish Canyon, Lawrence Co., NRW; 9-10 to 11-30 (1 ad., 1 imm.) almost daily, LRP.

House Wren—Present 8-26 to 9-5 in Badlands, not common, RAW; 8-31 (1), 9-2 (1) both banded, Brookings Co., NJH; other last dates: 9-21 (1) Gregory Co., GLS; 9-28 Hyde Co., JH; 9-30 (2) Gavin's Point, WH; 10-5 Rapid City, BHAS.

Winter Wren—10-12 (1) Deuel Co., BKH; 10-12 (1) Gregory Co., GLS; 10-18 (1) Farm Island near Pierre, RLH.

Long-billed Marsh Wren—8-2 (7) Bon Homme Co., 10-22 (1) Gavin's Point, WH; 9-30 (1) Rapid City, RCK.

Canyon Wren—9-2 (1) entered Dorothy McCullough's home, seen almost daily outside the house; (1) seen or heard daily Rimrock Hwy, Penn. Co., LRF; 10-5 (2) Little Elk Canyon, Meade Co., NRW.

Rock Wren—9-5 last date Rapid City, DHK; 9-7 last date Badlands, CY; 8-24 (1) Stanley Co., RLH.

MIMIC TO SHRIKES

Mockingbird—8-30 (1) Keystone, Penn. Co., C. Ranier, A. Abel (fide EMS).

Gray Catbird—8-19 (1) Perkins Co., AH; 9-6 (3) Pierre, JLM; 9-5 (1), 10-14 (1) both banded, Brookings Co., NJH; last dates: 9-16 Badlands, RAW; 9-15 (3) Gregory Co., GLS; 9-21 (1) Yankton, WH; 9-25 Rapid City, EAS.

Brown Thrasher—8-1 to 9-13 (15) banded, Burke, 9-15 (2) last date, Burke Lake, GLS; 9-6 (8) Pierre, JLM; 8-22 (12), 11-5 (1) last date, Yankton, WH; other last dates: 9-13 Perkins Co., AH; 9-23 Clay Co., KJH; 10-1 Badlands, RAW; 9-28 Rapid City, BHAS; 10-18 Hyde Co., JH.

American Robin—(33) banded at Brookings, NJH, and (65) at Burke, GLS. Migration flocks of 100 or more through most of state from last of Sept. to early November.

Swainson's Thrush—Present 9-3 to 9-26 Badlands, RAW; 9-6 (1) Brookings, CP; 9-13 to 10-14 total (10) Hyde Co., JH; 9-15 last date at Rapid City, BHAS; 9-27 (1) Belle Fourche, IW.

Gray-cheeked Thrush—9-3 (1) Badlands, RAW.

Eastern Bluebird—9-7, 9-8 (1), 9-21 (5) Penn. Co., NJE; 9-28 (1) Black Hills, JLM; 10-1 (7) Gavin's Point, 10-4 (7), 10-31 (3) Yankton Co., WH; 10-2 to 10-28 total (3) Deuel Co., BKH; 10-10 (2) Brookings Co., NJH.

Mountain Bluebird—Present until 9-22, common, Badlands, RAW; 10-12, 10-13 (2) Slim Buttes, Harding Co., RLH; 10-19 (3) Custer Co., JLM.

Golden-crowned Kinglet—9-23 to 10-8 total (10) Black Hills area, BHAS; good movement in Deuel Co. on 10-12, BKH; 10-14, 20, & 27 (1) Clay Co., KJH; 10-22 (3), (1) daily rest of period, Hyde Co., JH; 10-22 (1), 11-9 (1) both banded, 11-30 (2) Brookings Co., NJH; 11-8 (2), 11-13 (1) Brookings Co., ERE; 11-7 Davison Co., JLM; 11-8 Gregory Co., GLS.

Ruby-crowned Kinglet—9-11 to 10-19 total (6) Rapid City, EAS, RCK, JLM; present 9-5 to 10-1, uncommon, Badlands, RAW; 9-11 (1) Brookings, CP; 9-23 to 10-25 total (7) Hyde Co., JH; (4) banded during Oct., Brookings Co., NJH; 10-12 small movement Deuel Co., BKH; 11-22 last date Minn. Co., GWB.

Water Pipit—9-27 (3), 10-20 (5) Clay Co., WH; (4) sightings of single birds during period, Deuel Co., BKH.

Sprague's Pipit—9-13 (4) Badlands, RAW.

Bohemian Waxwing—11-4 (30) Perkins Co., AH; 11-16 (5) Gregory Co., GLS; 11-22 (150) Rapid City, BLG.

Cedar Waxwing—9-3 to 9-9 (2) Badlands, RAW; 9-14 (6) Belle Fourche, IW; Rapid City 9-14 (10) RCK, 11-22 (20) NRW; 9-15 (10), 10-25 (15), 11-15 (30) Burke Lake, GLS; 9-21 to 10-4 (15-20) daily, Hyde Co., JH; 10-19 (30) Clay Co., KJH; 10-16 (4), seldom seen in area, Perkins Co., AH; 10-2 to 10-9 (25) daily in yard, 11-6 (26) Gavin's Point, WH; Brookings Co. 11-4 (9) ERE, 10-21 (6) and 11-15 (3), NJH; 11-7 (12) Davison Co., JLM.

Northern Shrike—11-7 to 11-30 (3) sightings Deuel Co., BKH; 11-15 to 11-22 total (5) Rapid City and Fall River Co., BHAS; 11-8 (1) Gregory Co., GLS.

Loggerhead Shrike—8-3 to 8-23 total (61) Penn. & Meade Cos., BHAS; 8-20 (1) Custer Co., NRW; present until 9-3 Badlands, RAW; 8-24 (3), 9-7 (1), 9-20 (1) Yankton Co., WH.

Starling—Present all areas. (1000) roosting in store sign at Rapid City.

VIREOS, WARBLERS

Bell's Vireo—8-29 to 8-31 (1) seen and heard several times, Hyde Co., JH.

Solitary Vireo—9-2 (1) Deuel Co., BKH; 8-20 to 10-27 total (20) Rapid City and Sturgis, BHAS.

Red-eyed Vireo—8-1 to 9-12 total (12) Rapid City, BHAS; 8-29 (2 imm.) Burke, GLS.

Warbling Vireo—8-21 to 9-9 total (6) Rapid City, BHAS; 9-9 (1) Badlands, RAW.

Black and White Warbler—8-25 to 9-15 total (6) Rapid City, EAS, GRB, JLM; (5) observations Deuel Co., BKH.

Tennessee Warbler—8-25 (1) Badlands, RAW;

8-30 (2) Minn. Co., GWB; 9-2 (1) banded Brookings Co., NJH; 9-7 (1) Rapid City, JLM.

Orange-crowned Warbler—8-21 to 9-26 common, Badlands, RAW; 9-7 to 10-12 total (14+) Hyde Co., JH; 9-25 to 10-9 total (5) Rapid City, BHAS.

Nashville Warbler—8-30 (2) Minn. Co., GWB; 9-15 (1), 10-12 (2) Hyde Co., JH; 9-13 (1) banded Brookings Co., NJH; observed (4) times during period, Deuel Co., BKH.

Parula Warbler—10-1 (1 f.) Badlands, RAW.

Yellow Warbler—8-2 (1) Bon Homme Co., 8-18 (1) Yankton Co., WH; 8-25 to 9-3 common, Badlands, RAW; 8-29 (3) last date Hyde Co., JH; 9-8 (1) banded, Brookings Co., NJH; 8-17 to 9-1 total (9) Rapid City, BHAS; only (2) sightings Deuel Co., BKH.

Magnolia Warbler—9-2 (1) Minn. Co., GWB; 9-24 (1 m.), 9-28 (1) Hyde Co., JH.

Cape May Warbler—8-23 (1 imm.) Deuel Co., very heavy streaking, BKH.

Yellow-rumped Warbler—8-20 to 10-26 total (59) Penn. Co., BHAS; 9-15 to 10-1 common Badlands, RAW; 9-22 (1), 9-24 (20), 9-28 (30), 10-17 (2) Hyde Co., JH; 9-24 (2), 9-26 to 10-10 (5) banded, Brookings Co., NJH; 9-21 (10), 10-2 to 10-18 (9) banded, Burke, GLS; 10-1 to 10-12 total (8) Yankton Co., WH; 10-4 last date Minn. Co., GWB; 11-9 (1) Burke Lake, GLS.

Black-throated Green Warbler—8-30 (2) Lincoln Co., GWB; 10-13 (1) banded Brookings Co., NJH.

Chestnut-sided Warbler—9-3 (2) Minn. Co., GWB.

Bay-breasted Warbler—9-2 unusual numbers in Deuel and Roberts Counties, (4-6) birds each location, 9-3 (3-4) birds in Clear Lake, Deuel Co., BKH.

Blackpoll—9-2 (1) Minn. Co., GWB; 9-7 (1) Hyde Co., JH.

Palm Warbler—9-11 (1) banded Brookings Co., NJH; 9-21 (2) Gregory Co., GLS.

Ovenbird—8-26 to 9-18 total (7) including one specimen, Rapid City, NRW, BHAS; 8-10 (1) Belle Fourche, IW; 9-2 (1), 9-3 (2) Deuel Co., BKH; 9-25 (1) banded Brookings Co., NJH.

Northern Waterthrush—8-14 (1), 9-2 (1) Deuel Co., "my first fall records for this species," BKH; 8-25 (1), 8-26 (3) Rapid City, NRW, EAS.

Common Yellowthroat—8-2 (4) Bon Homme Co., WH; 9-6 (9) Stanley Co., JLM; 9-15 (1) Badlands, RAW; 9-12 to 10-4 total (8) Rapid City, BHAS; 9-29 (1) banded Brookings Co., NJH.

Yellow-breasted Chat—8-30 (3) in tree, 8 ft. from observer, Custer Co., BN; 9-7 (1) Rapid City, GRB; 9-3, 9-9 (1) Badlands, RAW.

Wilson's Warbler—(4) sightings beginning 8-19, Deuel Co., BKH; 8-30 (1) Lincoln Co., GWB; 9-8 to 9-26 present, Badlands, RAW; (1) present on most days from 9-2 to 10-5, (2) on 9-16, Hyde Co., JH; 9-11 to 10-26 total (9) Rapid City, EAS, RCK, JLM.

Canada Warbler—8-19 (3), 8-23 (2) Deuel Co., BKH; 8-30 (1) Lincoln Co., GWB, 9-7 (1 m.) close view for several minutes, Hyde Co., JH.

American Redstart—8-15 to 9-1 Rapid City, BHAS; 8-21 to 9-22 present, Badlands, RAW; 8-22 to 10-13 total (10) Hyde Co., JH.

BOBOLINK TO TANAGER

House Sparrow—Reported everywhere. Big increase over 1974, BHAS.

Bobolink—8-17 (1) Gregory Co., GLS; none in Yankton Co., WH; 8-27 last date in Minn. Co., GWB.

Western Meadowlark—Some still present in most areas in mid-November; birds flocking last of Aug. in Deuel Co., BKH.

Yellow-headed Blackbird—Early Sept. reports from Meade and Yankton Cos. and Badlands. Also reported from Perkins, Bon Homme, and Gregory Counties.

Red-winged Blackbird—Common everywhere early in period. Some still present in most areas in November.

Orchard Oriole—8-3 (3) Meade Co., JLM; 9-15 (1) last observation, Hyde Co.

Northern Oriole—8-15 to 8-24 (3) Yankton Co., WH; 8-25 (1) last fall record, Rapid City, NRW; 9-1 last observation, Hyde Co., JH; 8-1 to 9-4 (12) banded, 9-3 migration flock of (15) in yard in evening, Burke, GLS.

Rusty Blackbird—10-17 (2) Clay Co., WH; 10-28 (15) at water pan in yard, Hyde Co., JH; 11-1 (4) Minnehaha Co., GWB.

Brewer's Blackbird—9-21 (1) Yankton, WH; 10-25 (80) Minn. Co., GWB; 11-10 (10) Stanley Co., JLM.

Common Grackle—Present in flocks in most areas until 10-4; small flocks in Clay Co. 11-19, KJH.

Brown-headed Cowbird—9-14 (133) Yankton Co., 10-17 (600) in one flock Clay Co., 11-30 (1 f.) Yankton, WH; 10-27 (1) Brookings Co., NJH.

Western Tanager—8-26 (1) Badlands, RAW; 9-14 (1) last date seen, Rapid City, NRW.

FINCHES, SPARROWS

Cardinal—10-21 (1 pr.) Cotton Park, Clay Co., 10-27 (1 pr.) in shelterbelt near Vermillion, 11-26 (1 m.) at feeder, Clay Co., KJH; (1) in yard six days in Aug., 10-22 (4) Yankton, 11-1 (4) ne. Yankton Co., 11-25 (5) in yard, Yankton, WH; 11-8 (1 pr.) Brookings, CP; 11-9 (1 m.) Burke Lake, and first observation in Gregory Co. for GLS.

Rose-breasted Grosbeak—9-8 (1 m., 1 imm.) Rapid City, VLB; 9-25 (1 f.) Yankton Co., WH.

Black-headed Grosbeak—8-1 to 9-13 total (7) Rapid City, Spearfish Canyon, BHAS; 8-10 (1) Belle Fourche, IW; 8-30 (1) Badlands, RAW; 8-30 to 9-13 total (9) Perkins Co., AH; 9-6 (1) near Pierre, JLM.

Blue Grosbeak—8-13 (2), 8-27 (1) Minn. Co., GWB; 8-17 (1 m., 2 f.) near Rapid City, GRB, EMS; 8-18 (1), 8-24 (4), 8-31 (2), 9-7 (1 ad., 1 imm.) Yankton Co., WH; 9-27 (2) Lincoln Co., KE.

Indigo Bunting—8-2 (1) Bon Homme Co., WH; 8-5 to 8-10 (4) Rapid City and Farmingdale, Penn. Co., JLM, NRW.

Lazuli Bunting—8-16 to 8-22 (2) Rapid City, RCK, BLG.

Dickcissel—8-1 (1) Butte Co., JLM; none in Yankton Co., WH.

Evening Grosbeak—Good showing over state. 8-17 to 11-22 total about (300) with gradual build up in flock size by mid-Nov., the best

number in the last three years, BHAS; 9-23 (2), 10-7 (4), 10-14 (12) Belle Fourche, IW; 10-25 to 11-19 five sightings of single birds or small groups of up to ten birds, Deuel Co., BKH; 8-19, 8-20 (1), 11-18 (3) in yard, Perkins Co., AH; 11-8 (12), 11-15 (3) Burke Lake, 11-21 (6), 11-23 (4) at feeder in Burke, GLS; 11-15 to 11-26 present in Sioux Falls, KE; 11-12 (10), 11-15 (30), smaller numbers on 11-20, 11-23 Hyde Co., JH; 11-12 (1), 11-13 (7), 11-26 (1) Yankton, WH; Brookings: 11-7 (20) CP, CAT, 11-13 (12) NJH; 11-28 small flock at feeder, Waubay N.W.R., RRJ.

Purple Finch—10-13 (22), 10-16 (6), still present 10-21 Hyde Co., JH; 10-13 first observation, Deuel Co., BKH; 10-20 (2) Rapid City, CY; 10-26 (1) Sturgis, JLM; 11-18 (2) Cleghorn Canyon, Penn. Co., DSM; 10-25 (5), 11-8 (10), 11-24 (25), 11-28 (50) Burke Lake, Gregory Co., GLS; 11-21 (2), 11-29 (2) Yankton Co., WH; 11-26 (1) Brookings, CP; present last of period, Minn. Co., GWB.

Gray-crowned Rosy Finch—10-30 (3), 11-22 (25) Black Hills area, DHK, NRW.

Common Redpoll—First seen on 11-5 in numbers of (50+) by 11-20, Deuel Co., BKH; 11-15 to 11-26 in Sioux Falls, KE; 11-13 (2), 11-21 (25) Brookings Co., ERE; 11-24 (10), 11-28 (3) Burke Lake, GLS; 11-26 (2) Hyde Co., JH.

Pine Siskin—8-16 to 10-22 total (120) with build-up at feeders in mid Oct., Rapid City, BHAS; 9-16 (2), 10-22 (8), 10-31 (15), (10-15) present during Nov., Hyde Co., JH; 1-21 (1) Gavin's Point, 10-23 (1) Clay Co., WH; 9-30 (15), banded (7) Oct., Nov., Brookings Co., NJH; 11-4 (8) Lyman Co., WCT; 11-8 (15), 11-16 (8) Burke Lake, GLS; first observation 10-25 Deuel Co., BKH.

American Goldfinch—8-1 to 10-26 total (100) Rapid City, BHAS; 9-22 (3) in yard, Perkins Co., AH; 9-30 (44), 10-22 (32) Gavin's Point, WH; 11-12 (1) Brookings Co., ERE; 11-10 (3) Ft. Pierre, JLM.

Red Crossbill—Singles or 2 or 3 from late Sept. through rest of period, Deuel Co., BKH; 10-12 (6) Harding Co., RLH; in Sioux Falls 11-15 to 11-26, KE; about (5) daily at feeder on Nemo Road, Black Hills, NJE; both Norma Eckman and G.L. DeFord observed Red Crossbills pecking at salt blocks in their pastures; numbers in Rapid City area declined in Oct. and Nov., EMS.

White-winged Crossbill—11-15 to 11-26 in Sioux Falls, KE; 11-16 (1 imm.) Lake Co., BKH; 11-19 (1) Brookings Co., NJH.

Rufous-sided Towhee—8-16 (1) Perkins Co., AH; present until 10-1 Badlands, RAW; (4) during period, Clay Co., KJH; 9-10 (1) Minn. Co., GWB; 9-21 to 10-15 (1-3) daily, Hyde Co., JH; 9-30 (2), 10-4 (4), 11-1 (1) Yankton Co., WH; 9-30 to 10-25 total (5) Gregory Co., GLS; 10-26 last date seen, Rapid City, BHAS.

Lark Bunting—8-21 (5) Day Co., KFH; present until 9-3, Badlands, RAW; 9-7 (40) Meade Co., JLM.

Savannah Sparrow—8-20 to 10-5 total (10) Rapid City area, BHAS; present until 9-22 Badlands, RAW; 9-27 (7), 10-17 (11), 10-23 (11), 10-28 (1) Clay Co., 10-12 (4) 11-1 (2) Yankton Co., WH; peak (100+) Minn. Co., GWB.

Grasshopper Sparrow—8-17 to 8-20 total (16) Penn. Co., GRB, JLM; 9-27 (2) Clay Co., WH.

LeConte's Sparrow—9-27 (2) Lincoln Co., KE; 9-27 (3), 9-28 (5) Yankton Co., 9-27 (1), 10-9 (9) in one mile, 10-19 (8) seven in one spot, 10-20 (2), 10-25 (2), 10-26 (1) Clay Co., WH.

Vesper Sparrow—8-17 to 9-28 total (40) Black Hills area, NRW, JLM; 9-14 (3), 9-28 (4), 10-13 (3) Yankton Co., 9-27 (14) seven in one spot, 10-20 (1) Clay Co., WH.

Lark Sparrow—Present until 9-3 Badlands, RAW; 8-3 to 9-10 total (17) Penn., Butte, and Custer Counties, BHAS.

Dark-eyed Junco (White-winged)—9-2 to 10-26 total (150) Rapid City, BHAS; av. (20) at feeder, banded (50) in Nov., Rapid City, NRW.

Dark-eyed Junco (Slate-colored)—9-21 (1) Burke Lake, 10-18 common Gregory Co., GLS; 9-23 first sighting Badlands, RAW; 9-22 (1), 10-15 to 10-20 av. of (25) daily, Hyde Co., JH; 9-20 (1), 10-25 (8), 11-13 (15), Yankton Co., WH; 9-25 (15) first date, definite build up by 10-1, Rapid City, BHAS; 9-30 (5) first sighting Lyman Co., WCT; 10-12 (7) Harding Co., RLH; 10-1 (20) Belle Fourche, IW; 10-14 (2) first sighting, 10-20 common in flocks of (20-30) Clay Co., KJH; 10-17 to 10-19 (34) banded, Brookings Co., NJH; 11-2 to 11-30 (30) daily Brookings Co., ERE; 11-16 (3) in yard, Perkins Co., AH.

Dark-eyed Junco (Oregon)—10-16 first sighting in Rapid City, av. (3) daily at feeders, BHAS.

Tree Sparrow—10-5 (1), 10-15 (40), 11-3 (30) Hyde Co., JH; 10-12 (2) first date at Burke Lake and Gregory Co., GLS; 10-17 (6) Clay Co., 10-22 (26), 10-25 (54), 11-1 (78) Yankton Co., WH; 10-20 (10) Clay Co., KJH; 10-19 to 11-5 (14) banded, Brookings Co., NJH; 10-21 very common, Lyman Co., WCT; 10-10 to 11-15 total about (200) Black Hills area, BHAS; 11-2 (25), 11-30 (15) Brookings Co., ERE; 11-10 (28) Hughes Co., JLM.

Chipping Sparrow—8-21 to 10-1 present in Badlands, RAW; 8-29 to 10-4, peak 10-2 (15) Hyde Co., JH; present in yard mid-Oct., Perkins Co., AH; 9-2 to 10-22 (30) banded, Brookings Co., NJH; 10-1 (5) Gavin's Point, WH; 10-26 (3) last date seen Rapid City, JLM.

Clay-colored Sparrow—Present 8-29 to 10-12 in small numbers, Hyde Co., JH; 8-16 to 9-14 total (59) Penn. Co., BHAS; 9-20 (20) Burke Lake, Gregory Co., GLS; 10-1 (2) Gavin's Point, WH.

Field Sparrow—8-18 (1), 9-30 (2), 10-4 (1) Yankton Co., WH; 9-9 (1) Badlands, RAW; 9-23 (1) Hyde Co., JH; 9-27 (1) Lincoln Co., KE; 10-1 (1) Gregory Co., GLS 10-3 (5) in yard, Perkins Co., AH; 10-15 (1) banded, Brookings Co., NJH.

Harris' Sparrow—9-21 (1), 10-4 (30), 10-28 (40), 11-28 (1) Hyde Co., JH; 9-28 (1), 10-23 (20) Clay Co., 9-30 (4), 10-26 (27), 11-6 (6), 11-30 (1) Yankton Co., WH; 10-2 to 11-30 several daily Brookings Co., ERE; 10-4 (3) banded, Burke, 10-12 (12) Burke Lake, 10-18 many, Burke Lake, GLS; 10-13 (50) first fall date, 10-21 numerous, Lyman Co., WCT; 10-20 to 10-23 small flocks common, Clay Co., KJH; 10-14 (6) Belle Fourche, IW; 10-13 to 10-15 (16)



—From Color Transparency
By J. W. Johnson

Clay-colored Sparrow

banded, Brookings Co., NJH; 10-12 to 11-24 total (102) Penn. and Meade Cos., BHAS.

White-crowned Sparrow—9-12 to 10-1 present in Badlands, RAW; 9-14 to 10-26 (39) Penn. and Meade Cos., BHAS; 9-16 to 10-19, peaks of (10) or 9-24, 10-10, Hyde Co., JH; 10-5 (4) Gregory Co., GLS; 10-11 to 10-31 total (4) Yankton Co., WH.

White-throated Sparrow—9-23 (1) Badlands, RAW; 9-23 (1), 9-28 (12), 10-4 (20), 11-3 (1) Hyde Co., JH; 9-25 to 11-12 total (10) Yankton Co., WH; 10-20 (4), 10-21 (6) Clay Co., KJH; 11-29 (1) a late date, Brookings, NJH.

Fox Sparrow—9-11, 9-12 (1) Badlands, RAW; 9-30 (1), 10-12 (1) Yankton, WH.

Lincoln's Sparrow—Present 9-1 to 10-6, peaks 9-23 (20), 9-24 (10) Hyde Co., JH; 9-16 (2) banded, Brookings Co., NJH; 9-28 (4), 9-30 (5), 10-16 (3) Yankton Co., WH; 10-12 (2), 10-18 (1) Burke Lake, GLS; 9-12 (2) Rapid City, NRW.

Swamp Sparrow—9-30 (1) Gavin's Point, 10-17 (2), 10-20 (1) Clay Co., WH.

Song Sparrow—Present 8-26 to 10-1, Badlands, RAW; 9-10 to 10-26 total (15) Rapid City area, RCK, JLM, NRW; 9-30 (19), 10-22 (7), 11-1 (4) Yankton Co., 9-27 (25), 10-23 (14) Clay Co., WH; 10-5 (16) in yard, Perkins Co., AH; 10-12 (12) Burke Lake, GLS; 10-24 last date Hyde Co., JH.

Lapland Longspur—10-23 (70) in one flock, Clay Co., WH; 11-4 est. (400) first fall date, Lyman Co., WCT.

Smith's Longspur—Very good flight beginning 10-21 through 11-7, flocks of (10-35) birds on 10-28. Good observations usually, noted wing stripes and buffy breasts, and heard calls, Deuel Co., BKH.

Chestnut-collared Longspur—8-3 to 9-22 total (47) Penn. and Meade Cos., JLM; 10-13 early migration, Deuel Co., BKH.

Snow Bunting—10-28 first date in Deuel Co., BKH; 11-1 small flocks in Day Co., NJH.

CONTRIBUTORS

Black Hills Audubon Society (BHAS).
Members: Gertrude Bachmann (GRB);
Adelaide Brodsky (ATB); Violet Brodsky
(VLB); G.L. DeFord (DeF); Norma Eckmann
(NJE); Bonnie Green (BLG); Rachel Kat-
terlohn (RCK); Doris and Bob Knecht (DHK);
Dorothy McCullogh (DSM); Joci and Harold
Mortimer (JLM, HJM); Jo Murner (JM);
Barney Nordstrom (BN); Ruth and Leighton
Palmerton (LRP); Esther Serr (EMS);
Elizabeth Southmayd (EAS); Robert Stephens
(RES); N.R. Whitney (NRW); Leota Williams
(LAW); Clara and Lenord Yarger (CY,LY).
Gilbert W. Blankespoor and Herbert Krause
(GWB).

Carol Breen (CB).
Esther Edie (ERE).
Kim Eckert (KE).
Willis and Rosamond Hall (WH).
June Harter (JH).
Bruce K. Harris (BKH).
Richard L. Hill (RLH).
Alfred and Gertrice Hinds (AH).
Nelda Holden (NJH).
Karolyn Hoover (KJH).
Ernest E. Miller (EEM).
Carol Peterson (CP).
Galen L. Steffen (GLS).
Charles A. Taylor (CAT).
Walter C. Thietie (WCT).
Irma Weyler (IW).
Richard A. Wilt (RAW).

Waubay National Wildlife Refuge, Day Co.—
Robert R. Johnson (RRJ); Kent F. Hall
(KFH); Edmund J. Fromelt (EJF).

President's Page

(Continued from Page 63)

zones. The popular term today is "trade-off," in which the agency will provide and protect an equal area somewhere else in trade for the area destroyed. But is the replacement equal in quality as well as size? We must be aware of what we are getting in trade and let our cry in the future be not for habitat but for quality habitat.—Nelda Holden, Brookings.

Hand Carved Duck Collection For Sale

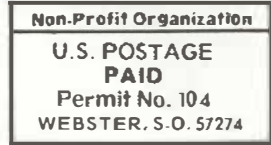
A collection of 42 ducks carved and painted by Thomas Hanson, Valley City, No. Dak., is for sale by the owner, Mrs. Ury Dahling. The birds, which are 3 to 4 inches long, are in a small antique glass candy case. Measurements of the curved-front case are: 17½ in. wide, 12½ in. deep, and 10 in. high. The value for the duck collection and the case has been placed at \$200. Inquiries may be sent to: Mrs. Ury Dahling, Webster, So. Dak. 57274.

Request For Great Egret Records

Herman P. Chilson is doing research on the Great Egret (formerly known as Common Egret or American Egret) in South Dakota. The study, covering a period of 100 years, is being prepared for publication. His present compilation of published records reveals many large gaps, so he is asking members to please send their unpublished observations to him. He would also like to receive information about South Dakota Great Egret records in less familiar publications. Please include the date (day, month, year) and the name of the county for each observation. Send to: Herman P. Chilson, 505 Main Street, Webster, So. Dak. 57274.

Alex Walker

Word has been received that Alex Walker, a pioneer prairie ornithologist, died several months ago in Oregon. He lived in South Dakota for many years and actively pursued bird studies in Douglas County before the Walkers moved to Oregon in 1912. Alex Walker was a curator at the Tillamook County Pioneer Museum in Oregon for more than 20 years. An article about him was published in the December 1954 issue of "Bird Notes" (6:57-58).



General Notes of Special Interest

(Continued from Page 70)

BARRED OWL AT WAUBAY REFUGE—On October 31, a waterfowl hunter found a Barred Owl on the road along the south boundary of Waubay National Wildlife Refuge, Day County, and brought it to the refuge headquarters. The bird was barely alive and died shortly thereafter.

Although there were no obvious wounds, it is believed that death was caused either by gunshot or by collision with a vehicle. The owl will be mounted and displayed in the refuge office.

Barred Owls were observed on the refuge only two other times—in 1964 and 1973. We do not believe these sightings were ever reported to SDOU.—Kent F. Hall, Assistant Refuge Manager, Waubay N.W.R., Waubay 57273.

+++

SORAROOSTING IN A TREE IN HYDE COUNTY—On 9 May 1975, when birds were going to roost, I went out to see if there was anything interesting in the shelterbelt adjacent to my yard. On my return, as I stepped from the edge of the tree belt, a bird flew from the ground to a horizontal branch 10 feet up on a chinese elm, about 25 feet in front of me. Its

bright yellow beak was immediately noted, so I used the 12x35 binocular for a better view of the bird. It had the black facial pattern, short turned-up tail, white undertail coverts, yellow beak, size and shape of the Sora. The bird walked on the branch in the same manner that a rail walks on the ground, and it did not fly away when I moved ten feet closer. When I departed, the Sora settled down on the branch in a roosting position. It was still there at 8:30 p.m., when the light was getting quite dim.

Perching and roosting above ground might be normally practiced by Soras, but standard literature does not mention the behavior. My observation, however, is not unique. Paul F. Springer stated in correspondence that he has seen Virginia Rails and Common Gallinules roosting in low trees and shrubs. Also, Richard N. Connor et al. told about a Sora, standing on a rock on Tinker Mountain in Virginia, that "... looked at us for approximately 15 seconds, then flew to a sourwood tree about 10 feet away, where it remained at least until we departed 5 minutes later." ("The Raven," 45:38).—June Harter, Highmore 57345.