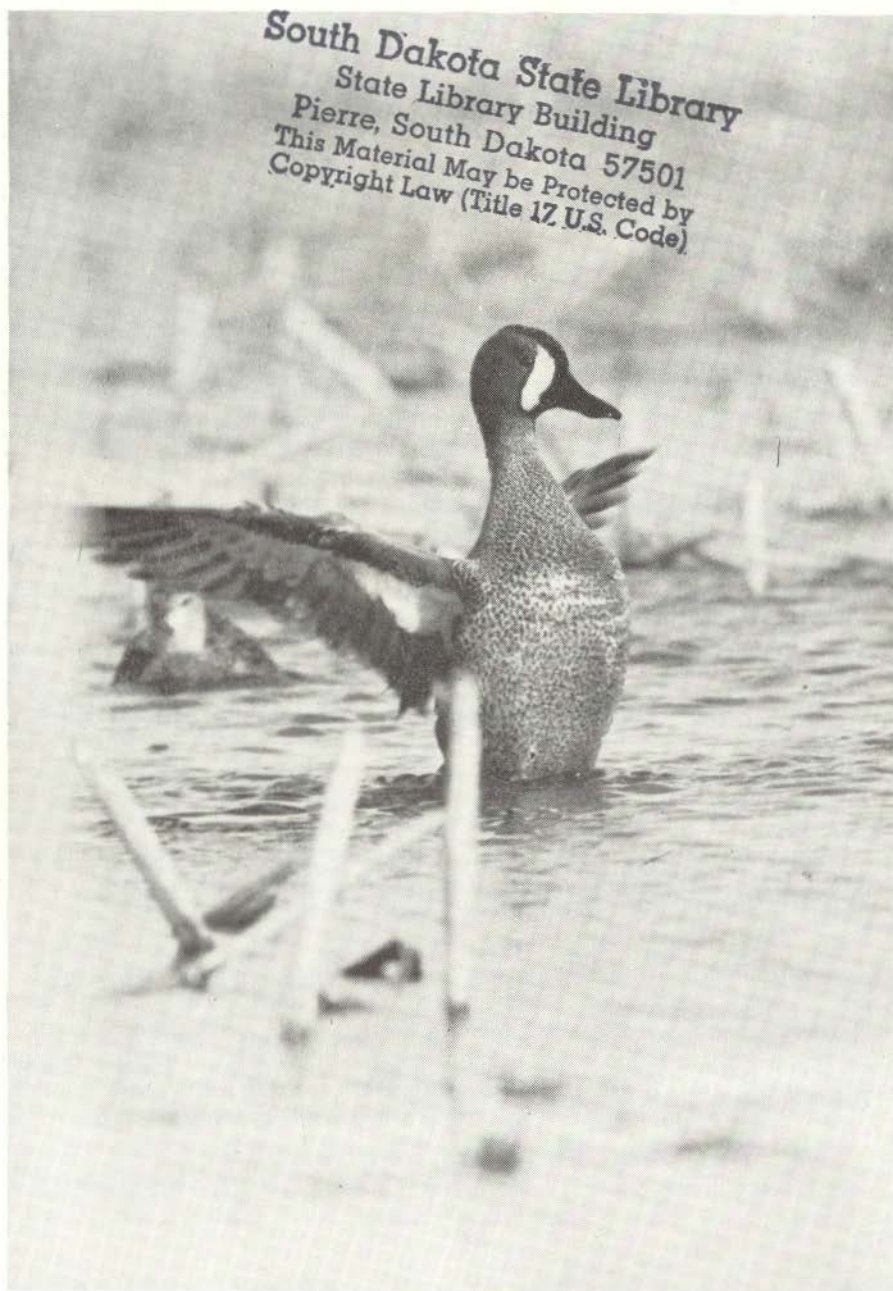


South Dakota Bird Notes

Vol. 33

September 1981

No. 3



South Dakota State Library
State Library Building
Pierre, South Dakota 57501
This Material May be Protected by
Copyright Law (Title 17 U.S. Code)

Blue-winged Teal

Photo: Ron Spomer

South Dakota Bird Notes, the official publication of the South Dakota Ornithologists' Union (organized 1949), is sent to all members whose dues are paid for the current year. Life members \$125; sustaining members \$12.00; regular members \$6.00; family members (husband and wife) with one subscription to *Bird Notes* \$9.00; juniors (10-16) \$3.00; libraries (subscription) \$6.00. Single and back copies: Members \$1.50, Non-members \$2.00. All dues payments, change-of-address notices, and orders for back numbers should be sent to the Treasurer, Nelda Holden, Rt. 4, Box 252, Brookings SD 57006. All manuscripts for publication should be sent to Editor Dan Tallman, NSC Box 740, Aberdeen SD 57401.

Vol. 33

September 1981

No. 3

IN THIS ISSUE

President's Page 51
 Gyrfalcons in Sully County, Ron Spomer 54
 Fall 1980 Banding in Aberdeen, Dan Tallman 55
 General Notes — Ruffed Grouse Courtship, White-faced Ibis and Snowy Egret Sighted in Lake County, A Band-tailed Pigeon at Pierre, Rough-winged Swallows Nest in Building, Early Dates for Mourning Dove Nests in Gregory and Brown Counties, Late Fall Date for the Blue Grosbeak in Gregory County, Barn Owls Nest along the Missouri River, Both Species of Three-toed Woodpeckers Observed in the Black Hills, Possible Nesting of Green Herons at Burke Lake 58
 The 1981 Spring Migration, Bruce Harris 62

SOUTH DAKOTA ORNITHOLOGISTS' UNION

OFFICERS: 1980-1981

President Robert Buckman, Dakota State College, Madison 57042
 Vice President Everett C. Montgomery, 426 S. Jackson, Aberdeen 57401
 Secretary L. M. Baylor, 1941 Red Dale, Rapid City 57701
 Treasurer Nelda Holden, Rt. 4, Box 252, Brookings 57006
 Editor and Librarian Dan Tallman, NSC Box 740, Aberdeen 57401

ELECTED DIRECTORS

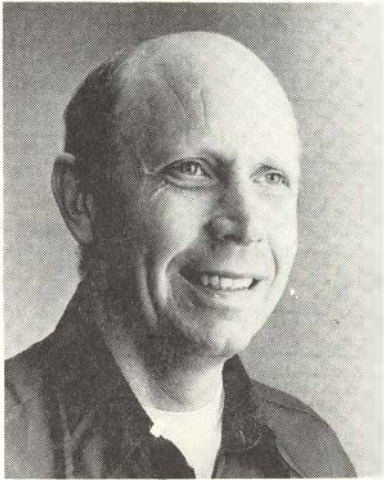
For Term Expiring 1981: Jocelyn Baker, Rapid City; Byron Harrell, Vermillion; June Harter, Highmore; Kenneth Husmann, Brookings; J. W. Johnson, Huron.

For Term Expiring 1982: Gil Blankespoor, Sioux Falls; Robert Buckman, Madison; Esther Edie, Bruce; Nelda Holden, Brookings; Galen Steffen, Burke.

For Term Expiring 1983: Gertrice Hinds, Prairie City; Everett C. Montgomery, Aberdeen; Carol Oleson, Volga; Ron Spomer, Pierre; Dan Tallman, Aberdeen.

PAST-PRESIDENT DIRECTORS

L. M. Baylor, Rapid City; Herman P. Chilson, Webster; Bruce Harris, Clear Lake; William E. Lemons, Meckling; N. R. Whitney, Jr., Rapid City.



PRESIDENT'S PAGE

SDOU 1981 Spring Meeting

The South Dakota Ornithologists' Union's 1981 Spring meeting was held on 22-24 May 1981 at Spearfish. On Friday evening we began with registration and a social hour in the Student Union of Black Hills State College. Later, some members showed slides of birds and bird silhouettes.

Trying to identify the slides occasionally made the experienced birders scratch their heads!

On Saturday, a misty rain fell most of the morning but the weather cleared in the afternoon. Despite the rain, we had three excellent field trips. One, led by Esther Serr, encountered large numbers of birds, especially ducks, north from Spearfish. The second group, led by Dan Bjerke, explored the northern fringe of the Black Hills and found a great variety of species. The third, led by Nat Whitney, drove into the Spearfish Canyon region and discovered a Northern Three-toed Woodpecker. On Saturday evening all returned to the Village Restaurant in Spearfish, where they enjoyed an excellent meal. After supper Ron Spomer gave a slide presentation on the birding areas in and around Pierre. Having attended the last two summer meetings in the Pierre area, I can attest to the excellent birding opportunities that Pierre provides.

On Sunday morning two field trips were repeated. Nat Whitney and Dan Bjerke returned to the same areas they had explored on Saturday. At noon we returned to the Spearfish Holiday Inn and compiled our list of species sighted. We found 120 species in three counties. The whole membership of the SDOU extends thanks to Dan Bjerke and the others who organized the meeting and the field trips. They did an excellent job. The trip leaders and guides, Ester Serr, Aileen Montgomery, Dan Bjerke, and Nat Whitney are to be commended for excellent service.

Registration at the 1981 Spring Meeting

Aberdeen--Everett and Jeanette Montgomery, Evelyn and Raymond Roberts, Dan Tallman. Belle Fourche--Sheila Hanify, Aileen Montgomery, Bud and Alice Shaykett. Brookings--David, Nelda, and Arthur Holden, Kenneth and Patsy Husmann, David Molengraaf, Darrell and Lois Wells. Bruce--Dick and Esther Edie. Burke--Galen Steffen. Camp Crook--Bob Rogers. Clear Lake--Bruce Harris. Madison--Bob Buckman. Omaha NB--Clyde and Emma Johnson. Pierre--Floramay, Maeann, Martin, and Steve Miller, Ron and Cheryl Spomer. Prairie City--Alfred and Gertrude Hinds. Rapid City--Gertrude Bachman, Jocelyn Baker, Les and Mary Baylor, Florence Baylor, Sr. Georgine Essert, Mary Hafner, Verna Hellman, Tony Jedrykowski, Bob and Doris Knecht, James and Mary MacInnes, Esther Serr, Carol Stroud, Tass Thacker, Nat and Mary Whitney, Leonard and Clara Yarger. Sioux Falls--Gilbert and Jan Blankespoor. Spearfish--Dan and Kris Bjerke, Cecil and Peggy Haight, George Ross, Adeline Wickstrom, Melvin and Rosemary Seymoor. Sturgis--Ernest Miller. Vermillion--Byron and Joyce Harrell, Barbara Brown, Adeline Siljberg.

Species List for the SDOU Spring Meeting, 23 - 24 May, 1981, Spearfish, S.D.

Symbols: B = Butte County
L = Lawrence County
M = Meade County

Eared Grebe M
Western Grebe M
Pied-billed Grebe L
White Pelican B
Great Blue Heron L
American Bittern L
Mallard L, M, B
Gadwall M, L
Pintail M
Green-winged Teal M
Blue-winged Teal L, M
American Wigeon M
Northern Shoveler M
Wood Duck B
Redhead M
Canvasback M
Lesser Scaup M
Ruddy Duck M
Common Merganser L
Turkey Vulture M, L
Red-tailed Hawk L, M, B
Ferruginous Hawk L, B
Golden Eagle L
Marsh Hawk L, M

Osprey L
Prairie Falcon L
American Kestrel L, M
Ring-necked Pheasant L
American Coot L, M
Killdeer L, M
Common Snipe L
Spotted Sandpiper M, L
Upland Sandpiper M, B
Wilson's Phalarope M, L
Northern Phalarope M
Ring-billed Gull L, M
Black Tern B
Rock Dove L
Mourning Dove L, M
Solitary Sandpiper L
Chimney Swift L
White-throated Swift L
Belted Kingfisher L, M
Common Flicker L, M
Red-headed Woodpecker L
Lewis' Woodpecker L
Yellow-bellied Sapsucker L
Hairy Woodpecker L

Downy Woodpecker L, B	Red-eyed Vireo L
Northern Three-toed Woodpecker L	Warbling Vireo L
Eastern Kingbird L, M	Yellow Warbler L, M, B
Western Kingbird L	Yellow-rumped Warbler L
Say's Phoebe L	Ovenbird L
Willow Flycatcher L	MacGillivray's Warbler L
Western Flycatcher L	Comon Yellowthroat L, M
Western Wood Pewee L	Yellow-breasted Chat L
Olive-sided Flycatcher L	American Redstart L, M
Horned Lark L	House Sparrow L
Violet-green Swallow L	Bobolink B
Tree Swallow L	Western Meadowlark L, M, B
Rough-winged Swallow L	Yellow-headed Blackbird L, B
Barn Swallow L	Red-winged Blackbird L, B
Cliff Swallow L, M, B	Orchard Oriole L, B
Gray Jay L	Northern Oriole L, B
Blue Jay L, B	Brewer's Blackbird L
Black-billed Magpie L	Common Grackle L, M, B
Common Crow L, M	Brown-headed Cowbird L, M
Pinyon Jay B	Western Tanager L
Black-capped Chickadee L	Rose-breasted Grosbeak L
Red-breasted Nuthatch L	Black-headed Grosbeak L, M
Dipper L	Indigo Bunting L
House Wren L, B	Lazuli Bunting L, B
Canyon Wren L	Evening Grosbeak L, B
Gray Catbird L, M	Pine Siskin L, B
Brown Thrasher L, B	American Goldfinch L, B, M
American Robin L, B, M	Red Crossbill L
Swainson's Thrush L, B	Rufous-sided Towhee L, B
Mountain Bluebird L	Lark Bunting M, B
Townsend's Solitaire L	Vesper Sparrow L
Golden-crowned Kinglet L	Lark Sparrow L, M
Ruby-crowned Kinglet L	Dark-eyed Junco L
Cedar Waxwing L	Chipping Sparrow L
Starling L	Lincoln's Sparrow L
Solitary Vireo L	Song Sparrow L

The Editor regrets the omission in *South Dakota Bird Notes* 33 (2): 37, of the authorship of the fine article entitled "Goshawk Nesting in Harding County, South Dakota." The note was written by Charles L. Blair, Boise, ID 83706.

Gyrfalcons in Sully County

by **Ron Spomer**

Pierre 57501

Believe it or not, birding has a major fault. The more new species one sees, the fewer chances one has to see new species. Because of this depletion factor, last January I jumped at an opportunity to see a Gyrfalcon that was reported to be hunting waterfowl along Lake Oahe, north of Pierre.

I heard about this rare bird from Rex Riis, Missouri Breaks Audubon president and experienced birder. He told me a fantastic tale about how the falcon hovered within 10 yards of him on 10 January 1981. On that afternoon, Riis was stalking a very large flock of Mallards feeding about 150 yards northeast of him in a cornfield near Okobojo Creek, Lake Oahe, Sully Co. While Riis lay along a weedy fence line, a falcon flew in from the north, flushing the ducks toward him. As they passed overhead, he fired, sending one Mallard gliding back north. His Labrador retriever immediately gave chase, as did the falcon. The dog reached the duck first but the determined falcon hovered 3 yards above the retriever while the dog carried the drake back to Riis. When Riis took the duck, the falcon retreated 50 yards to the west, but still appeared interested. Riis heeled his dog and threw the Mallard toward the falcon, which returned and hovered indecisively only 10 to 15 yards from him. Finally, the Gyrfalcon banked away without taking the bird. Riis, who has seen all 3 color phases of this species at the Cornell Laboratory of Ornithology and who has participated in a Gyrfalcon nesting survey in Mt. McKinley National Park, identified his bird as a dark phase Gyrfalcon.

My Gyrfalcon sighting was not as exciting as Riis's. On 12 January, Chuck Post and I drove to the Okobojo Bay area. I hoped to photograph the Snowy Owls and other raptors, especially the Gyrfalcon, that had been using the region regularly. Unfortunately, clouds blocked the sun shortly after we arrived. We spotted seven Bald Eagles, two adult Golden Eagles, but no Snowy Owls.

I was losing faith when I located a raptor sitting on a wooden corner post near the Okobojo Point Recreation Area. We drove within 60 yards of the bird, studying it with 7-power binoculars. It looked like a Gyrfalcon—chunky but with a definite air of a falcon about it. The bird was uniformly dark-backed. I thought I saw a faint marking on the face but I could not be sure at that range. Before I could get my telescope, the raptor flew west, staying less than 20 yards above the ground. When it reached a draw leading to the bay, it turned north and eventually disappeared behind a hill. I watched for Prairie Falcon or Peregrine markings, but I saw no sharp color distinction between dorsal and ventral surfaces, no black axillars, and no heavy moustache. The flight was rather heavy and slow yet direct and falcon-like.

After the bird disappeared, we raced back to the main road and scanned fence posts. Chuck spotted our quarry on another corner post, about one quarter mile from where we first saw it. The falcon flew before we could stop, but circled around an open water bay very near the road. This time I had ample opportunity to see all sides of the bird as close as 40 yards. It was much more uniformly gray than I had first noticed, although some darker streaking was evident on the breast and there was a slight dark swath through the eye; a faint falcon moustache adorned the head.

After circling twice, the Gyrfalcon landed on the barren shore within 10 feet of the water. Just below the falcon, under a small cutbank, lay a sick Canada Goose. The falcon watched but made no move to strike. The goose eventually wiggled back into the protection of the bank. The Gyrfalcon, which blended very well into the gray shale on the beach, sat unconcerned. It was still sitting when we left five minutes later.

Fall 1980 Banding in Aberdeen

by **Dan A. Tallman**

Northern State College
Aberdeen 57401

Introduction

During the 1980 fall (August through December), I banded 1005 individual birds, comprising 55 species. These results compare to 379 individuals of 35 species banded during the same months in 1979. This paper, the third in my series of banding reports (see Tallman 1979, SDBN 31:60-63; 1980, SDBN 32:78-81), discusses reasons, both abiotic and biotic, that may have contributed to this great increase in banding activity.

Changes in Methods and Materials

My study area continues to be my backyard at 1506 SE Third Ave., Aberdeen SD. One reason birds are attracted to the yard is a large (25-foot) but slowly disintegrating Mountain Ash. Between the ash and a crab apple tree, I placed two 12-meter nets, one on top of the other. In 1980 I made five major changes in my study: occasionally I used a single 12-meter net at a right angle to the two-tiered set of nets; I added a suet bag on a dead willow in the middle of the yard; I increased the time allowance for the nets to stay open; I used seven Potter trap cells under the feeder; and I acquired a thistleseed feeder. The fact that my feeder had been in operation for over a year undoubtedly aided my efforts.

Results

A monthly tabulation of banding activities is presented in Table 1.

Table 1. Birds banded during the 1980 Fall at Aberdeen, South Dakota.
 (* = species banded in 1980 but not 1979).

	Aug	Sept	Oct	Nov	Dec
Mourning Dove	1	1			
*Saw-whet Owl			1		
Yellow-shafted Flicker	3	2			
*Yellow-bellied Sapsucker		1			
Hairy Woodpecker			1		
*Downy Woodpecker	5	3		1	
*"Traill's" Flycatcher	2	1			
Blue Jay	1	1	1		
Black-capped Chickadee	2	1	1	1	3
White-breasted Nuthatch		1	3		
*Red-breasted Nuthatch		2	2		
Brown Creeper			6	2	
House Wren	2	15	1		
Catbird	3	1			
Brown Thrasher	1	3			
American Robin	6	26	33	2	
Hermit Thrush			1		
Swainson's Thrush	3	13	1		
Golden-crowned Kinglet			9	2	
Ruby-crowned Kinglet		1	9	1	
*Bohemian Waxwing				1	
Cedar Waxwing		8	21	14	2
*Red-eyed Vireo	5	3			
*Warbling Vireo	1				
*Black-and-white Warbler		2			
*Tennessee Warbler		2			
Orange-crowned Warbler		54	31		
Nashville Warbler		1			
*Black-throated Blue Warbler		1			
Myrtle Warbler		3	12		
*Blackpoll Warbler		1			
*Palm Warbler		1			
*Ovenbird	1	3			
Mourning Warbler		1			
*Yellowthroat		1			
Wilson's Warbler	5	9	2		
*American Redstart	2	1			
*Baltimore Oriole	6	1			
Common Grackle	5	4	1	2	
*Evening Grosbeak				1	
Purple Finch			3	17	5
*Common Redpoll				1	
*Pine Siskin				5	134
American Goldfinch		2	87	82	13

	Aug	Sept	Oct	Nov	Dec
*Rufous-sided Towhee (spotted race)		1			
Slate-colored Junco		7	163	10	13
Oregon Junco					2
Tree Sparrow			4	1	
Chipping Sparrow	1		2		
Harris' Sparrow			45	1	
White-crowned Sparrow			4		
*White-throated Sparrow		11	10		
*Fox Sparrow			1		
Lincoln's Sparrow		2			
*Song Sparrow			2		

Discussion

A comparison of the fall 1980 banding with that of the 1979 fall generally shows the 1980 migration through Aberdeen to have been earlier and possibly, of greater numbers (despite the changes in methods and materials).

Dramatically earlier migration peaks occurred in six species during 1980. Although American Robins were trapped in about equal numbers during both falls (1979 = 77; 1980 = 65), their numbers peaked in October in 1980 rather than in November as in 1979. Furthermore, in 1979 robins continued to be banded in December but they virtually disappeared in the 1980 winter. Cedar Waxwings, Slate-colored Juncos, and Tree Sparrows also peaked during October of 1980, rather than in November, as they had in 1979. Flickers were banded earlier in 1980 and very few were seen in the 1980 winter. One 1980 flicker had two salmon-colored primaries, showing itself to be of hybrid ancestry. Finally, Lincoln's Sparrows in 1980 peaked in September rather than in October.

Many species were banded in greater numbers in 1980, compared to 1979. Some of this increase can be attributed to the addition of suet to the yard. Species in this category include the woodpeckers, chickadees, nuthatches, and creepers. One exception occurred with Hairy Woodpeckers, which did not show an increase. This exception is surprising when we consider that no Downy Woodpeckers were banded in 1979 yet nine entered the nets in 1980. I do not know why Hairy Woodpeckers did not show a similar increase. Catbirds, thrashers, waxwings, and Swainson's Thrushes also appeared in larger numbers. I suspect that the reason why the Swainson's Thrush increased from 3 banded in 1979 to 17 in 1980 was a real increase in population rather than my use of new bird feeders or traps. The 1980 fall season was a great one for warblers. They occurred in higher numbers, at earlier dates, and in greater variety. Orange-crowned Warblers and Wilson's Warblers showed the greatest increase in numbers: from 25 in 1979 to 85 in 1980 for Orange-crowns and from 3 to 16 for Wilson's. Warblers banded in 1980 but not in 1979 included the Black-and-white Warbler, the Tennessee, the Black-throated Blue, the

Palm, the Ovenbird, the Yellowthroat, and the American Redstart. Only two warblers were banded in 1979 and not in 1980, the rare Blackburnian and the Yellow (7 in 1979 compared to none in 1980), a species that may be becoming rarer throughout its range. Yellow-bellied Flycatchers and Starlings were the only other species caught in 1979 but not in 1980. Finally, 1980 proved to be a winter finch year with 25 Purple Finches (only 2 in 1979) and 139 Pine Siskins (none in 1979). A large number of finch sightings from other locations in town support my suspicion that these 1980 banding records reflect real population increases.

A few groups showed about equal numbers both years. These included doves, owls, flycatchers, jays, and blackbirds. Goldfinches were the only birds that remained much later in 1980 than they did in 1979. I suspect the thistle feeder kept large numbers of this species on into November whereas in 1979 they left by the end of October.

Summary

In comparing the 1979 and 1980 fall migrations, I found through bird banding in my back yard in Aberdeen that 1980 witnessed a tremendous increase in numbers and in early appearances of many migrants. I think these changes reflect real population differences between the two years for some species but in other cases are the result of about five changes in the methods and materials employed by me in my study.

GENERAL NOTES

RUFFED GROUSE COURTSHIP.--A male Ruffed Grouse drumming on an uprooted Ponderosa Pine near the Harney Peak Trail at Sylvan Lake in the Black Hills entertained us for 45 minutes on the morning of 27 May 1981. The grouse sat upright and was perched crosswise on a barkless area of the large log. The area had little undergrowth. The drumming sound was produced by the beating of the bird's cupped wings. The first two beats were slow and inaudible, followed by beats that increased in audibility and rapidity. Of these later beats, only the first 25 could be counted. The wing beats slowed near the end of the drumming. At this time, the tail, which had been held downward to brace the bird, rose and fanned outward. The drumming lasted for 12 to 14 seconds and was repeated every 2½ to 3 minutes. The bird once left the log but returned after walking around in the vicinity. When we got within 30 feet of the bird, it finally fled. The grouse's overall coloration was more gray than red and the tail was entirely gray and white, with black bands and a wide terminal band. The feathers at the top of the head were erect, as were the feathers behind the brownish eyes. We did not see ruffs erected, however, as has been reported in the literature.--*Jocelyn Baker, Rapid City 57701 and Galen L. Steffen, Burke 57523.*

WHITE-FACED IBIS AND SNOWY EGRET SIGHTED IN LAKE COUNTY.--At 4 p.m., 16 June 1981, while visiting the Milwaukee Slough, about eight miles east of Madison, South Dakota, I sighted one White-faced Ibis and one Snowy Egret. Both species are very uncommon in the state. Field marks of both birds were carefully recorded, although the identity of the ibis rests on my assumption that all South Dakota *Plegadis* are the White-faced species.--Robert Buckman, Madison 57042

A BAND-TAILED PIGEON AT PIERRE.--On 3 May 1981, at the entrance to Campground 3 below Oahe Dam, I spotted what I took at first to be a medium-sized hawk. The bird, perched 20 feet above the ground on a dead Box Elder limb in a brushy grove of trees, appeared to be preening and drying its feathers. Rain had fallen at dawn.

Upon examination through my spotting scope, I discovered that the bird was not a hawk but a pigeon. The yellow, black-tipped bill first caught my attention. Its purplish-gray breast matched the color of its head. I discovered a white bar on the bird's nape. Although most of the tail was hidden by the bird's perch, I could see that at least the bottom portion of the outer tail feathers were whitish, while the central feathers were gray.

Band-tailed Pigeons are only known in South Dakota from two Black Hills records. Although I constantly checked, I never saw the species again in Pierre. When I reported this bird's presence to SDOU member Ron Spomer, he said he saw a large pigeon the previous evening at the water's edge along a sandy shore in a backwater area below Oahe Dam. Unfortunately, he failed to examine it more closely.--Bruce Coonrod, Pierre 57501.

ROUGH-WINGED SWALLOWS NEST IN BUILDING.--During the past four years we have watched Rough-winged Swallows nest at our cottage at Enemy Swim Lake in Day Co. In the early spring of 1978 a flicker cut holes in our tool shed. When Rough-winged Swallows began investigating these holes, I tacked some boards and cardboard boxes at the back of the holes to make nesting sites. That year, and the next, the swallows chose one of the holes, nested, and fledged young. In 1980, Starlings drove the swallows out. The swallows moved to a new metal building, nesting in a cardboard box full of goose decoys. The box rested on a shelf inside the building. Even though we kept the building door closed, a space of about three inches was sufficient to permit the swallows to fly in and out. This nesting was also successful. In 1981, the Rough-winged Swallows built their nest in an unused Martin house that lay on a shelf in the metal building. A few days later, I found a dead swallow inside the door of the building and I discovered the nest was deserted. Three other swallows have been checking every possible nesting site but, to my knowledge, have not yet nested.--Kenneth H. Husmann, Brookings 57006.

EARLY DATES FOR MOURNING DOVE NESTS IN GREGORY AND BROWN COUNTIES.--The 1980-1981 winter was exceptionally mild. Therefore, we were not surprised to encounter very early nesting attempts by Mourning Doves, an early breeding species elsewhere in its range.

On 19 April 1981, Erika and Dan Tallman found a dove nest containing two white eggs. This active nest was on the ground below a cedar at Richmond Lake State Park, Brown Co. Four weeks later, the nest had disappeared.

On 30 April 1981, at the Burke Lake Recreation Area in Gregory Co., Steffen flushed a Mourning Dove from a nest in a cedar. The nest contained two eggs. On 3 May 1981, he flushed another Mourning Dove from a ground nest in the same area. This nest contained a single egg.

All these records are earlier than the early nest records for Mourning Doves listed by Whitney et al. (*The Birds of South Dakota*).--Galen L. Steffen, Burke 57523 and Erika and Dan A. Tallman, Northern State College, Aberdeen 57401.

LATE FALL DATE FOR THE BLUE GROSBEAK IN GREGORY COUNTY.--On 24 September 1980, I captured a Blue Grosbeak in a banding trap in my yard in Burke, Gregory Co. I watched the bird enter the six-celled water-drip trap, already occupied by several American Robins and two Chipping Sparrows. The grosbeak was attracted by the other birds in the trap, but seemed reluctant to enter the remaining empty cell. It flew to a nearby birdbath, then back into the trap. I banded this female, of unknown age, and have not seen it since. This record is over two weeks later than the 7 September record cited by Whitney et al. (*The Birds of South Dakota*).--Galen L. Steffen, Burke 57523.

BARN OWLS NEST ALONG THE MISSOURI RIVER.--On 22 June, I observed two Barn Owls in a cliff cavity along the Missouri River at river mile 946 in Brule Co. The cavity appeared to be a nesting site, but, because of the difficult terrain, I could not see any young in the burrow. At river mile 981, in Lyman Co., another Barn Owl was sighted in a similar cavity; again, no young were observed. On 25 June, two more Barn Owls were seen south of Chamberlain at river mile 965 in Brule Co, but nesting still could not be confirmed. Finally, in July, two new cavities were discovered at river mile 944, near Elm Creek, Brule Co. Adults inhabited both sites and one young owl was observed, thus confirming the nesting of this species along the Missouri River.--Jack Freidel, SD Department of Game, Fish and Parks, Chamberlain 57325.

BOTH SPECIES OF THREE-TOED WOODPECKERS OBSERVED IN THE BLACK HILLS.--While attending the 1981 spring meeting of the SDOU, I was fortunate to observe both species of the elusive three-toed woodpeckers in the South Dakota Black Hills.

On 23 May 1981, in the Cheyenne Crossing area (Lawrence Co.), a small party of SDOU members hiked up a small, steep-walled canyon. We looked for three-toed woodpeckers since the Northern Three-toed was reported in this area in the mid-1960's. A short distance into the canyon, Bruce Harris and I left the main party and climbed about halfway up one of the canyon slopes. After walking back and forth along this slope for about 20 minutes, Bruce spotted a male Northern Three-toed Woodpecker in a small Ponderosa Pine. The woodpecker flew in a half circle around us and landed about 20 feet from the ground on the trunk of a large Ponderosa Pine about 75 feet from us. After several minutes Bruce left to alert the others of our group, who by this time had returned to the highway. The woodpecker proved quite cooperative, remaining in the pine until everyone who wished to see it had walked back into the canyon.

Two days later, Jocelyn Baker, Everett and Jeanette Montgomery, and I made a trip to the Palmer Gulch Lodge area (Penn. Co.) to search for the Black-backed Three-toed Woodpecker. In the early morning of 25 May, we heard a woodpecker's drumming, but a search turned up only a Hairy Woodpecker. A short time later we heard more drumming; Everett soon located a female Black-backed Three-toed Woodpecker in the dead top of a large Ponderosa Pine.

Later we heard woodpeckers drumming in a timbered area across the valley from our first bird. I soon located another female Black-backed Three-toed Woodpecker and Jocie found a male about 250 yards distant; both perched in dead top portions of large Ponderosa Pines. Everett took photographs of the birds.

We noted that when one of the woodpeckers drummed the other answered within a few seconds. The drumming continued throughout our stay in the area. These woodpeckers are known to be persistent drummers, especially during the mating season.--Galen L. Steffen, Burke 57523.

POSSIBLE NESTING OF GREEN HERONS AT BURKE LAKE.--On 1 August 1980, I observed an adult Green Heron at the Burke Lake State Recreation Area in Gregory Co. Late on the evening of 11 August 1980, I saw two adults and an immature in a large willow tree near the spillway area. As darkness increased, the herons flew to an area of mixed cedar and Ponderosa Pines, where they apparently roosted. I found Green Herons in the area on several more occasions during August.

I did not find a nest, but the presence of the immature bird strongly suggests nesting in the area, which contains ideal habitat. No definite breeding records are known west of the Missouri for this heron (Whitney et al., *The Birds of South Dakota*; McPhillips, SDBN 33:16-18.)--Galen L. Steffen, Burke 57523.

The 1981 Spring Migration

by **Bruce Harris**

Box 605, Clear Lake 57226

This season witnessed a very early migration, beginning, in some instances, in February. I have included these early migrants in this report, although they actually occurred before the official beginning of the spring season reporting time. Other species nested well before the regular nesting season; these records will be reported in the 1981 Breeding Season Report.

Except in the northeast, where March rainfall was normal, March, April, and May were dry months with above-normal temperatures. Ice on the lakes broke up early and migration began two or three weeks ahead of normal dates for many birds, especially aquatic species. We established 32 earliest-ever dates this spring! The warblers migrated earlier than normal and we observed a better flight than we have seen in several years in the east river area. (Nelda Holden banded 14 warbler species at Brookings.) West river warblers and sparrows appeared in small numbers, perhaps because of poor habitat due to a lack of rain until May.

The season contained not only early dates, but also several rare or uncommon species. Noteworthy species and dates are in UPPERCASE letters in this report, since the bold-faced letters in previous issues have not stood out very well.

The following observers contributed to this spring migration report: Jocelyn L. Baker (JLB); Ross Baker (RB); Doug Backlund (DCB); Dan L. Bjerke (DLB); Carl Boecke (CB); Robert H. Brashears (RHB); Willis Hall (WH); John A. Hagen (JAH); Reda Hansen (RMH); Bruce K. Harris (BKH); M. Harris (MH); Alfred and Gertrude Hinds (A&GH); Karolyn J. Hoover (KJH); Nelda J. Holden (NJH); Don Holt (DH); Kenneth H. Husmann (KHH); Robert R. Johnson (RRJ); Douglas E. Kreger (DEK); W. J. Kurtenbach (WJK); James D. McLaird (JDM); R. Laber (RL); Dennis Lengkeek (DL); Michael M. Melius (MMM); Ernest E. Miller (EEM); Aileen E. Montgomery (AEM); Everett C. Montgomery (ECM); Blake Olson (BO); Marjorie M. Parker (MMP); Richard A. Peterson (RAP); Robert G. Rogers (RGR); Dorothy and Richard C. Rosche (DJ&RCR); Esther M. Serr (EMS); Alice Shaykett (AS); Harvey O. Smith (HOS); Galen L. Steffen (GLS); Ron C. Spomer (RCS); Gary J. Stava (GJS); Dan A. Tallman (DAT); Charles A. Taylor (CAT); Walter Thietje (WT); R. Torgerson (RT); Denice Vandry (DV); Juli E. Wilcox (JEW); Nat R. Whitney (NRW); Linda L. Watters (LLW); Richard Zusi (RZ).

Common Loon--BUTTE CO. (JLB). 1 May. FALL RIVER CO. (RCR). 26 April--30 May. Day Co. (KHH). 12 APRIL. Roberts Co., very early (BKH).

Red-necked Grebe--14 MAY, Waubay NWR, nesting. EARLIEST EVER (ECM).

Eared Grebe--16 April, Pennington Co. (JLB).

Western Grebe--15 APRIL, Codington Co. (BKH). 18 APRIL, Meade Co. (JLB, EMS). Both early records.

Pied-billed Grebe--18 MARCH, Davison Co. (JDM). 21 MARCH, Gregory Co. (GLS). 22 MARCH, Brookings Co. (NJH). All record-breaking reports!

Double-crested Cormorant--29 March, Deuel Co., 30 (BKH, GJS).
 Great Blue Heron--29 March, Deuel Co., 8 (BKH, GJS).
 Cattle Egret--5 May, Day Co. (HOS).
 SNOWY EGRET--19 May, Day Co. (LLW).
 Great Egret--Reports from Roberts, Deuel, and Day Co.
 Black-crowned Night Heron--31 March, Deuel Co., TIES FOR EARLIEST EVER (GJS).
 29 May, Fall River Co. (DJ&RCR). 3 May, Gregory Co. (GLS).
 American Bittern--23 May, LAWRENCE CO. (DLB).
 White-faced Ibis--7 May, Stanley Co., 4 (RCS).
 Canada Goose--20 February, Deuel Co., 200 and 25 February, Deuel Co., 300 (CB). 14 MAY
 (*Hutchinsii* race), Codington Co., LATE (BKH).
 White-fronted Goose--Deuel Co., first good flight in 3 years. 14 MAY, Codington Co., VERY
 LATE (BKH).
 Snow/Blue Goose--6 March, BENNETT CO., 100 (RCR). 17 FEBRUARY, Clay Co., TIES
 EARLIEST EVER (KJH). 14 MAY, Codington Co., very late (BKH).
 Mallard--20 FEBRUARY, Deuel Co., VERY EARLY (DEK). 23 March, Deuel Co., ALBINO
 (GJS).
 Gadwall--21 FEBRUARY, Davison Co., 5 (JDM). 24 FEBRUARY, Harding Co., 24 (RGR).
 Both records are very early.
 Pintail--20 FEBRUARY, Hamlin Co., 1 (KHH). 23 February, Bennett Co., 1310 (RHB, NRW).
 24 February, Harding Co. (RGR).
 Blue-winged Teal--22 MARCH, Davison Co. (JDM, RGR).
 CINNAMON TEAL--26 May, Stanley Co., 2 (RCS).
 American Wigeon--15 March, Brookings Co. (NJH).
 Wood Duck--7 MARCH, Davison Co., EARLIEST EVER (JDM). 14 March, Deuel Co. (BKH).
 Butte Co., 2 pair (JLB). Fall River Co. (DJ&RCR).
 Redhead--23 FEBRUARY, Yankton Co., 18, TIES EARLIEST EVER (WH). 1 March, Deuel
 Co., very early (DEK). 28 February, Harding Co. (RGR).
 Ring-necked Duck--28 FEBRUARY, Harding Co. (RGR). 9 March, Yankton Co., 205 (WH).
 Canvasback--13 FEBRUARY, Deuel Co., 11, EARLIEST EVER (DEK). 23 February, Yankton
 Co., 4 (WH).
 Lesser Scaup--25 February, Yankton Co., 4 (WH).
 Common Goldeneye--7 March, Harding Co. (RGR). 1 MARCH, Deuel Co., VERY EARLY
 (BKH). 3 March, Faulk Co. (ECM).
 Bufflehead--23 FEBRUARY, Bennett Co., 5, EARLIEST EVER (RHB). 24 February, Yankton
 Co., 3 (WH). 29 MAY, Fall River Co. (DJ&RCR). 25 MAY, Meade Co. (RCS). 15 MAY,
 Meade Co. (RGR). The May dates are very late for this species in South Dakota.
 OLDSQUAW--5 APRIL, Yankton Co., FIRST SPRING RECORD FOR STATE (photo) (WH).
 BLACK SCOTER--16 and 17 April, GREGORY CO., female, FIRST SPRING RECORD FOR
 STATE (GLS).
 Ruddy Duck--17 MARCH, Davison Co. (JDM, RGR). 19 March, Deuel Co. (BKH).
 Hooded Merganser--16 MARCH, Deuel Co., pair, VERY EARLY (BKH). 3 April, Deuel Co., 3
 (GJS).
 Common Merganser--1 MARCH, Deuel Co., 12, very early (BKH, DEK). 3 March, Faulk Co.
 (ECM). 29 MAY, Fall River Co., male (DJ&RCR). 23 MAY, Lawrence Co. (SDOU meet-
 ing). May records are very late.
 Red-breasted Merganser--14 MARCH, Yankton Co., EARLIEST EVER (WH, JEW). 27 April,
 PENNINGTON CO. (JLB).
 Turkey Vulture--10 April, LAKE CO., 2 (JDM). 26 April, DEUEL Co. (RT). 20 May, BROWN
 CO. (DAT). 12 April, Hughes Co., 50 (RCS). More reports from east river than usual.
 Goshawk--4 April, Pennington Co. (RCS).
 Sharp-shinned Hawk--17 May, Pennington Co., nesting bird? (JLB). Reports also from
 Hughes, Meade, Custer, and Spink Co.

Cooper's Hawk--8 May, Hughes Co. (RCS). 25 MAY, Lawrence Co. (RCS). May be nesting birds. 17 April, Custer Co., 2 (DCB).

Red-tailed Hawk--20 March, Gregory Co., partial ALBINO (DL fide GLS).

Broad-winged Hawk--25 April, Deuel Co., 3 (MH). 25 April, Brown Co. (DAT). 17 and 26 April, GREGORY CO., much west of normal range (GLS). 25 April, Brookings Co. (RB). 26 April, Yankton Co. (WH, JEW). 28 May, Waubay NWR, probably nesting (KHH).

Swainson's Hawk--9 April, Faulk Co., VERY EARLY (ECM). 10 April, Lyman Co. (WT). An early migration.

American Rough-legged Hawk--28 April, Sully Co., feeding on nesting Horned Larks (RCS). 3 May, Harding Co. (RGR). Both records are late.

Ferruginous Hawk--Reports from Hand, Brown, Meade, Clark, Lyman, Harding, and Fall River Co.

Golden Eagle--23 sightings from Pennington, Butte, Mellette, Custer, Gregory, Lawrence, and BROWN CO. (4 APRIL, DAT). 8 sightings in Perkins Co. (A&GH)

Bald Eagle--20 sightings from Harding, Perkins, Hughes, Davison (10, JDM), Custer, Butte, and Mellette Co.

Marsh Hawk--Reported down in numbers in Gregory Co. but definitely more in NE South Dakota. 25 FEBRUARY, Brown Co. (DAT). 5 AND 8 MARCH, Roberts Co. (BKH). Very early records.

Osprey--Reports from Roberts, Hughes, Edmunds, Faulk, Gregory (3, GLS), and FALL RIVER CO. (RCR).

Prairie Falcon--ONLY 2 REPORTS from west river! 4 April, Brown Co. (DAT).

Peregrine Falcon--5 May, Faulk Co. (ECM).

Merlin--9 April, Harding Co. (RGR). Also reported from Butte Co.

Ruffed Grouse--Reported Custer Co. See also note by JLB and GLS in this issue.

Prairie Chicken--Down 50% based on 2 lek counts (RCS), but 100 males on Gregory Co. dancing grounds (GLS, DL).

Sage Grouse--Reported from 2 areas in Harding Co. (RGR). Butte Co., 11 (AS).

Bobwhite--Reported from AURORA CO. (JDM, RGR). Also 15-17 May, BROOKINGS CO. (NJH).

WHOOPIING CRANE--19 April, Pennington Co., 4 (1 with band) (JLB, EMS, et al.) 9 April, Brown Co., 4 (B●).

Sandhill Crane--6 April, Deuel Co., 90 (BKH). 12 April, Lyman Co., 1600 in 1 hour (WT).

Virginia Rail--14 May, Codington Co., 2 in courtship chase (BKH).

Sora--22 April, Brown Co. (DAT). 5 May, Deuel Co. (GJS). 7 May, Hughes Co. (RCS).

American Coot--27 May, ALBINO NESTING, photo (GJS). 17 MARCH, Davison Co., very early (JDM).

Semipalmated Plover--22 APRIL, Brown Co., 3 (DAT, RCS). 1 May, FALL RIVER CO., 2 (DJ&RCR). More observations than usual this spring.

Piping Plover--22 May and 29 May, FALL RIVER CO., DEFENDING TERRITORY: if breeding, this record would be a first summer observation west of the Missouri (DJ&RCR).

Killdeer--12 MARCH, Deuel Co., VERY EARLY (BKH).

Golden Plover--Only a fair flight reported in the NE.

Black-bellied Plover--1 May, FALL RIVER CO. (DJ&RCR).

American Woodcock--Courtship flights observed in Brookings Co. (NJH).

Common Snipe--Wintered, Lawrence Co, 3 (late report, DLB). 9 April, Campbell Co., early (RCS). 15 April, GREGORY CO., WINNOWING MALE, nesting? (GLS)

Long-billed Curlew--Reports from Harding, Meade, Haakon, Fall River, Corson, and Pennington Co. 29 May, Custer Co., 13 (DJ&RCR).

Upland Sandpiper--15 APRIL, Brookings Co., VERY EARLY (NJH).

Solitary Sandpiper--22 April, Brown Co. (DAT). 25 April, Deuel Co. (BKII). 25 April, Pennington Co. (JLB). 29 April, Gregory Co. (GLS). All early dates.

Greater Yellowlegs--29 MARCH, Deuel Co., VERY EARLY (BKH).

Willet--20 April, Edmunds Co., early (JDM).

White-rumped Sandpiper--22 May, FALL RIVER CO. (RCR). More common in NE than for several years.

Baird's Sandpiper--10 April--29 May, FALL RIVER CO., up to 26 (DJ&RCR).

Least Sandpiper--18 APRIL, Pennington Co., VERY EARLY (JLB, EMS). 1 May and 10 May, FALL RIVER CO., up to 21 birds (DJ&RCR).

Dunlin--25 APRIL, Deuel Co., VERY EARLY (BKH). 19 May, Brown Co., 100 (BKH, ECM). 17 May, Davison Co., (JDM).

Semipalmated Sandpiper--6 APRIL, Brown Co., EARLIEST EVER (DAT). 22 and 29 May, FALL RIVER CO. (DJ&RCR).

WESTERN SANDPIPER--15 and 23 April, Brown Co. (DAT).

SANDERLING--25 May, MEADE CO., 4 (RCS). 14 May, Day Co. (ECM). 1, 22, and 29 May, Fall River Co., 50 (DJ&RCR).

SHORT-BILLED DOWITCHER--7 and 9 May, Hughes Co. (RCS).

Stilt Sandpiper--25 April, Deuel Co., early (BKH). 22 and 29 May, FALL RIVER CO. (DJ&RCR).

Marbled Godwit--9 APRIL, Faulk Co., VERY EARLY (ECM). 12 April, Deuel Co. (GJS). 2 May, LAWRENCE CO. (JLB). 10 May, FALL RIVER CO. (DJ&RCR). 20 April, Edmunds Co., 20 (JDM).

RED KNOT--9 May, HARDING CO., only the THIRD RECORD FOR SD, and west of its expected range (RGR).

Hudsonian Godwit--15 April, Brown Co. (DAT). 18 April, Bon Homme Co., 40 (RCS).

American Avocet--9 APRIL, Faulk Co., EARLIEST EVER (ECM). 15 April, Brown Co. (DAT). 4 May, PENNINGTON CO. (JLB). 6 observations during May, FALL RIVER CO., up to 18 birds (DJ&RCR).

Wilson's Phalarope--1 May, Codington Co., 150 (BKH). 3 May, Pennington Co., 150 (JLB, EMS). Very large concentrations for this species in SD. 29 May, FALL RIVER CO. (DJ&RCR).

Northern Phalarope--25 May, MEADE CO., 18 (JLB, RGR, DAT, GLS).

GLAUCOUS GULL--7 MAY, Hughes Co., late spring date (RCS).

Herring Gull--15 MARCH, Brookings Co. (NJH). 16 March, Deuel Co., very early (BKH). 29 May, FALL RIVER CO., 3 late spring migrants (DJ&RCR).

Ring-billed Gull--2 MARCH, Deuel Co., 3, EARLIEST EVER (BKH). 4 observations during May, Fall River Co. (DJ&RCR).

CALIFORNIA GULL--29 April, Hughes Co. (RCS). 16 May, Day Co. (BKH, KHH).

Franklin's Gull--31 MARCH, Day Co. (KHH). 1 April, Deuel Co. (BKH, GJS). Both records very early. 6 April, Gregory Co. (GLS). 2 May, Butte Co. (JLB). 7 May, STANLEY CO., 67 (RCS).

Bonaparte's Gull--5 APRIL, Yankton Co., EARLIEST EVER (WH). 10-16 April, Yankton Co., up to 155 (WH). 20 April, Hughes Co., 75 (RCS). These concentrations are the largest ever reported in SD. 1 and 10 May, FALL RIVER CO. (DJ&RCR).

Forster's Tern--19 April, Day Co., early (KHH). Reports also from Gregory, BUTTE, FALL RIVER, and Oahe Reservoir (33, RCS).

Common Tern--4 May, Brown Co. (DAT). 12 May, OAHE RESERVOIR (RCS).

Black Tern--7 May, Oahe Reservoir (RCS). 8 May, Codington Co. (BKH). Both records are early. 16 May, PENNINGTON CO. (JLB). 16 May, Gregory Co., 50 (GLS). 29 May, Fall River Co., 17 (DJ&RCR). More west river records than usual.

Snowy Owl--10 APRIL, Stanley Co. (RCS). 20 March, Day Co. (HOS, LLW). 29 March, Custer Co. (NRW). 26 March, Grant and Deuel Co. (BKH, DH). Considering the mild winter, these late dates are surprising.

Burrowing Owl--4 APRIL, Lyman Co., EARLIEST EVER (WT).

BARRED OWL--15 May, Day Co. (WJK).

Long-eared Owl--12 May, Gregory Co. (GLS). 5 May, Brookings Co. (DV fide NJH).

Short-eared Owl--10 May, DEUEL CO., also seen during June (BKH).

SAW-WHET OWL--24 March, Davison Co. (JDM).

WHIP-POOR-WILL--18 April, Brookings Co. (NJH).

Chimney Swift--26 APRIL, Jones Co., TIES EARLIEST EVER (RCS). 27 APRIL, Brown Co. (DAT). 30 April, Gregory and Hamlin Co.

White-throated Swift--10 April, Fall River Co. (RCR). 18 April, Custer Co. (DCB).

Red-bellied Woodpecker--10 May, Mellette Co., west of normal range (RAP). Brookings Co. (NJH).

Lewis' Woodpecker--23 May, Lawrence Co. (SDOU meeting). Numbers DOWN in northern Black Hills (DLB).

Yellow-bellied Sapsucker--7 APRIL, Brookings Co., 3 banded (NJH).

Hairy Woodpecker--16-year-old bird retrapped by NJH.

Downy Woodpecker--16 February-12 May, Brookings Co., 60 banded and 29 retrapped (89 total) (NJH).

Black-backed Three-toed Woodpecker--23 May, Lawrence Co. (RCS). 25 May, Pennington Co., 3 (JLB, ECM, GIS). 29 April, Custer Co. (JAH, RMH).

Northern Three-toed Woodpecker--23 May, Lawrence Co. (SDOU meeting).

Eastern Kingbird--27 APRIL, Day Co., EARLIEST EVER (RCS). 4 May, Hughes Co. (RCS). 4 May, Brown Co. (DAT).

Western Kingbird--29 APRIL, Deuel Co., TIES EARLIEST EVER (BKH). 1 May, Harding Co. (RGR). 1 May, Fall River Co. (RCR).

Great Crested Flycatcher--29 May, FALL RIVER CO. (DJ&RCR). 11 May, Meade Co. (EEM).

Say's Phoebe--13 APRIL, Perkins Co., early (A&GH). 21 April, SAND LAKE NWR (DAT, ECM).

YELLOW-BELLIED FLYCATCHER--18 May, STANLEY CO. (RCS). 28 May, Day Co. (LLW). 17 May, Waubay NWR (KHH).

Least Flycatcher--2 MAY, Harding Co. (RGR). 2 MAY, Stanley Co. (RCS). Both tie for early record. 3 MAY, Brookings Co. (NJH). 3 May, Davison Co. (JDM).

Empidonax sp.--25 and 28 APRIL, Brown Co., most likely Least Flycatchers but birds not singing (DAT).

Eastern Wood Pewee--HUGHES CO. (RCS).

OLIVE-SIDED FLYCATCHER--24 May, Lawrence Co. (SDOU meeting). 25 May, Roberts Co. (BKH). 28 May, Deuel Co. (BKH).

Tree Swallow--13 APRIL, Deuel Co., TIES EARLIEST DATE (BKH). 13 APRIL, Yankton Co., 92 (WH). 14 April, Day Co. (KHH). Reports from Meade, Custer, Pennington, Butte, and Mellette Co.

Rough-winged Swallow--10 APRIL, Yankton Co. (WH). 11 APRIL, Gregory Co. (GLS). Both earliest ever. 19 April, Davison Co. (JDM). 24 May, Lawrence Co. (SDOU meeting).

Barn Swallow--10 APRIL, Yankton Co., EARLIEST EVER (WH). 10 APRIL, Fall River Co. (RCR). 18 April, Gregory Co. (GLS).

Purple Martin--1 APRIL, Gregory Co., EARLIEST EVER (GLS). 6 April, Deuel Co., 2 areas (BKH).

Gray Jay--23 May, Lawrence Co. (SDOU meeting).

Pinyon Jay--Reported in Custer and Butte Co.

Black-capped Chickadee--Brookings Co., 28 banded and 19 returns (47 total) at feeder (NJH).

Red-breasted Nuthatch--Only report from Gregory Co.

House Wren--27 April, Brookings Co., early (RB).

WINTER WREN--1 March, Hughes Co. (DLB).

Brown Thrasher--18 April, Perkins Co., early (A&GH).

SAGE THRASHER--1 MAY, Fall River Co., TIES EARLIEST DATE.

American Robin--27 February, Deuel Co., 2, not wintering birds (DEK).

VARIED THRUSH--Christmas count through 15 April, Waubay NWR (RR.J).

WOOD THRUSH--28 May, DEUEL CO., singing bird not found at later date (BKH).

Hermit Thrush--1 April, Brookings Co., very early (CAT). 26 April, Brown Co. (DAT).

Swainson's Thrush--28 April, Brown Co., banded (DAT). 27 May, Day Co., VERY LATE (KHH). 3 June, Brown Co., banded (DAT).

Gray-cheeked Thrush--3 MAY, Roberts Co., TIES EARLIEST DATE (BKH). 4 MAY, Brown Co. (DAT).

Veery--15 May, Roberts Co. (DAT). 13 May, Hughes Co. (RCS).

Eastern Bluebird--9 MARCH, Yankton Co., EARLIEST EVER (WH). 24 MARCH, Roberts Co. (HOS, LLW). 26 April, Lawrence Co. (AS). 11 April, Mellette Co. (RAP). 16 May, Roberts Co., breeding (KHH). 15 May, Davison Co. (JDM, RGR). Reports also from Deuel, Hutchinson, Brown (2), and Union Co. Many more reports than usual, leading one to hope the species is making a comeback!

Mountain Bluebird--25 FEBRUARY, Custer Co. (MMP, NRW). 24 FEBRUARY, Pennington Co. (RL). 13 March, Davison Co. (A&GH).

Ruby-crowned Kinglet--31 MARCH, Brookings Co., EARLIEST EVER (CB). 12 MAY, Davison Co., LATE (JDM).

Cedar Waxwing--3 April, Yankton Co., 180 (WH).

Northern Shrike--1 March, Mellette Co. (RAP).

Loggerhead Shrike--15 MARCH, Davison Co., EARLIEST EVER (JDM). 4 April, Brown Co. (ECM, DAT). 5 April, Deuel Co. (BKH).

Bell's Vireo--29 May, FALL RIVER CO., 2, only second observation in 9 years (RCR).

Yellow-throated Vireo--Reports from Roberts and Day Co.

Solitary Vireo--Good flight in NE. Reports from Day, Davison, Brookings, Roberts, Hughes, and Lawrence Co.

Philadelphia Vireo--17 May, Day and Roberts Co., 4 in 3 areas at this early date (BKH, KHH).

Black-and-white Warbler--24 APRIL, Deuel Co., very early (GJS). 24 May, Meade Co., 8 in area where breeding is suspected (JLB, GLS).

BLUE-WINGED WARBLER--25 May, Roberts Co., male (BKH).

Orange-crowned Warbler--25 APRIL, Brown Co. (DAT). 25 APRIL, Brookings Co. (NJH). 27 April, Gregory Co. (GLS). All early dates.

Nashville Warbler--30 APRIL, Perkins Co., EARLIEST EVER (A&GH).

Yellow Warbler--28 April, Deuel Co., very early (BKH).

Magnolia Warbler--12 May, HUGHES CO. (RCS).

Black-throated Green Warbler--26 APRIL, Deuel Co., early (GJS). 28 April, Brown Co. (DAT). 12 May, HUGHES CO. (RCS). Also reported from Roberts, Day, and Davison Co. More than usual.

Blackburnian Warbler--18 May, HUGHES CO. (RCS). Also reported from Day, Roberts, Davison, Brown, and Brookings Co.

Chestnut-sided Warbler--13 May, HUGHES CO. (RCS). Also Day and Roberts Co.

Bay-breasted Warbler--3 MAY, Brookings Co., EARLIEST EVER (NJH).

Blackpoll Warbler--1 MAY, Brown Co., EARLIEST EVER (DAT).

Palm Warbler--1 May, HUGHES CO. (RCS).

Mourning Warbler--3 May, Deuel Co., early (GJS). 26 May, Hughes Co. (RCS).

HOODED WARBLER--16 May, Brookings Co., male (RB).

Canada Warbler--26 May, HUGHES CO. (RCS).

American Redstart--26 APRIL, Deuel Co., EARLIEST EVER (GJS).

Bobolink--4 May, Brookings Co. (NJH). 5 May, Deuel Co. (GJS). Both records are early.

Western Meadowlark--23 February, Brookings Co., early (NJH).

Yellow-headed Blackbird--2 May, Gregory Co., 50 pairs (GLS).

Orchard Oriole--4 MAY, Brookings Co., very early (NJH).

Brewer's Blackbird--4 April, Davison Co., 10-15 early birds (JDM).

Brown-headed Cowbird--25 April, CUSTER CO. (MMP). 10 May, CUSTER CO. (DJ&RCR).

Scarlet Tanager--3 MAY, Union Co., EARLIEST EVER (WH). A total of 12 reports from Hughes (2), Waubay NWR (3), Brookings (2), Codington, and Brown Co. Many more than usual.

Published by
SOUTH DAKOTA ORNITHOLOGISTS' UNION
Editor: Dr. Dan Tallman
NSC Box 740
Aberdeen, S.D. 57401

Nonprofit Organization
U.S. Postage
PAID
Permit No. 60
Aberdeen, S.D. 57401

South Dakota State Library
State Library Building
Pierre, SD 57501

- Rose-breasted Grosbeak--4 May, BUTTE CO. (AEM, AS).
Blue Grosbeak--29 May, FALL RIVER CO. (D,J&RCR).
Indigo Bunting--Reports from Butte, Hutchinson, Lawrence, Day, Walworth, and Roberts Co.
Lazuli Bunting--Reports from Hughes, Pennington, Butte, and Fall River Co.
Dickcissel--8 May, Brookings Co., early (NJH).
Evening Grosbeak--1 May, Gregory Co., 16 late spring migrants (GIS).
Purple Finch--3 May, Brown Co. (DAT). 3 May, Stanley Co. Both late spring migrants.
CASSIN'S FINCH--2 March-15 April, Custer Co. (MMP). 3 May, Custer Co. (JAH, RMH).
PINE GROSBEEK--27 March, Custer Co. (MMP).
Pine Siskin--16 February-9 May, Brookings Co., 493 banded (NJH). January-May, Brown Co., 697 banded (DAT).
American Goldfinch--16 February-9 May, Brookings Co., 72 banded (NJH). January-May, Brown Co., 53 banded (DAT).
Rufous-sided Towhee--3 MARCH, Perkins Co., EARLIEST EVER by a month, a wintering bird? (A&GH). 3 and 16 May, BROWN CO., western race (DAT).
Savannah Sparrow--25 April, Perkins Co., 20 (RGR). 28 April, Pennington Co., 25 (JLB, EMS).
SHARP-TAILED SPARROW--18 May, McPherson Co. (DAT, RZ).
GRAY-HEADED JUNC--25 April, Harding Co. (RGR).
Dark-eyed Junco--28 MAY, Day Co., LATEST EVER by 3 weeks (KHH). 12 May, Moody Co. (LLW).
Chipping Sparrow--13 APRIL, Brown Co. (DAT). 13 April, Brookings Co. (NJH). 14 April, Moody Co. (LLW).
BREWER'S SPARROW--30 APRIL, and 9 May, Harding Co., EARLIEST EVER (RGR). 22 May, Fall River Co. (WH). 1 May, Fall River Co., 40 (RCR).
Field Sparrow--7 APRIL, Clay Co., very early (MMM). 26 April, Badlands (RCS). 29 May, Fall River Co. (RCR).
Fox Sparrow--20 April, Moody Co., ONLY REPORT (LLW).
Chestnut-collared Longspur--27 MARCH, Sandborn Co., 2 VERY EARLY (JDM).

Printed by Quality Quick Print, 116 N Main, Aberdeen 57401