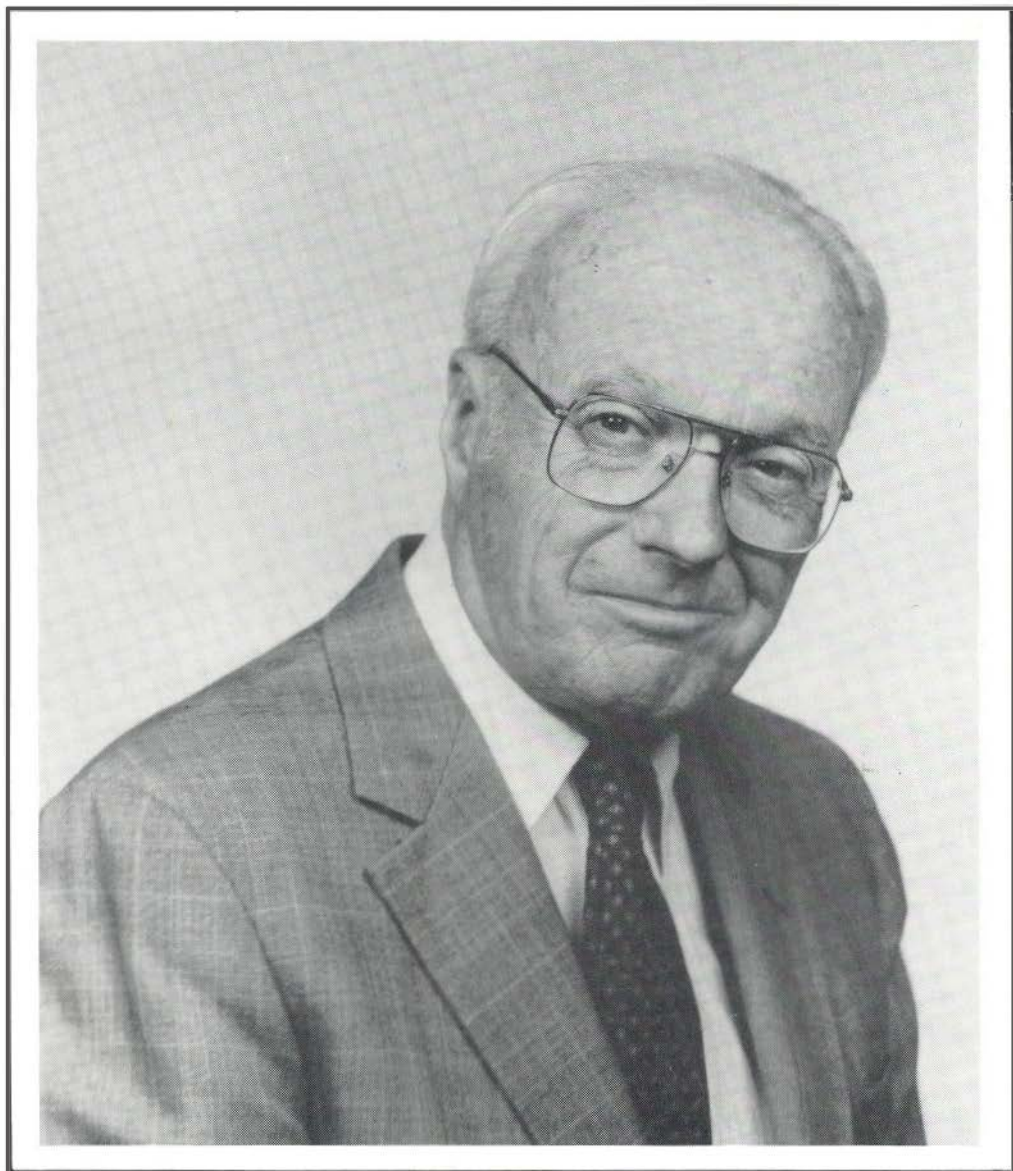

SOUTH DAKOTA
ORNITHOLOGISTS' UNION



SOUTH
BIRD



DAKOTA
NOTES

VOL. 49

SEPTEMBER 1997

NO. 3

SOUTH DAKOTA BIRD NOTES, the official publication of the South Dakota Ornithologists' Union (organized 1949), is sent to all members whose dues are paid for the current year. Life members \$150.00; Family life members (husband and wife) with 1 subscription to *Brd Notes* \$200; sustaining members \$15.00, regular members \$9.00; family members (husband and wife) with 1 subscription \$12.00; juniors (10-16) \$4.50; libraries (subscription) \$9.00. Single and back copies: Members \$2.50, Nonmembers \$3.00. All dues payments, change-of-address notices, and orders for back copies should be sent to the Treasurer, Nelda Holden, 1620 Elmwood Drive, Brookings, SD 57006. Manuscripts for publication should be sent to Editor Dan Tallman, NSU Box 740, Aberdeen SD, 57401.

VOL. 49	SEPTEMBER 1997	NO. 3
<i>IN THIS ISSUE</i>		
NATHANIEL R. WHITNEY, JR.....		Cover
PRESIDENT'S PAGE.....		55
IN MEMORIAM. NATHANIEL R. WHITNEY, JR. by L. M. Baylor.....		57
PACIFIC LOON RECORD FOR SOUTH DAKOTA by Jeffrey S. and Deanna M. Palmer.....		59
FIRST RECORD OF MEW GULL FOR SOUTH DAKOTA by David Swanson.....		60
GENERAL NOTES — Robin and House Finch Banding Recoveries; Western Meadowlark Attacks House Sparrow; AOU Checklist Changes Affecting the South Dakota Checklist.....		61
BOOK REVIEWS.....		63
SEASONAL REPORTS.....		66

SOUTH DAKOTA ORNITHOLOGISTS' UNION

Officers 1997-1998

President	David Swanson, USD, Vermillion 57069
Vice President	Jeff Palmer, 821 NW 5th Street, Madison 57041
Secretary	J. David Williams, Box 277, Ipswich 57451
Treasurer	Nelda Holden, 1620 Elmwood Drive, Brookings 57006
Editor	Dan Tallman, NSU Box 740, Aberdeen 57401
Librarian	Mark Skadsen, 419 N Euclid Ave., Sioux Falls, 57104

Elected Directors

- For Term expiring 1997: John Haertel, Brookings; Eric Likness, Vermillion; Ernie Miller, Sturgis; Richard Peterson, Midland; David Swanson, Vermillion.
- For Term expiring 1998: Gertrice Hinds, Prairie City; Jeffrey Palmer, Madison; Mark Skadsen, Sioux Falls; Dan Tallman, Aberdeen; Duane Weber, Custer.
- For Term expiring 1999: Dale Droge, Madison; Esther Edie, Brookings; Todd Jensen, Rapid City; Travis Hills, Crooks; Robb Schenck, Sioux Falls.

Past President Directors

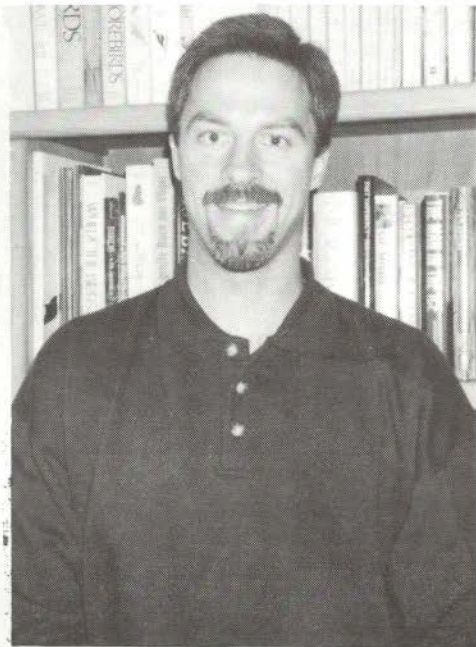
Jocelyn L. Baker, L. M. Baylor, Gilbert Blankespoor, Robert Buckman, Ken Graupmann, Cecil Haight, Byron Harrell, Bruce Harris, Nelda Holden, Rex Riis, Dennis Skadsen, J. David Williams.

Associate Editor: Erika Tallman



PRESIDENT'S PAGE

The recent *South Dakota Breeding Bird Atlas* did a wonderful job of cataloging the breeding birds of the state. However, much remains to be learned about South Dakota's breeding birds. For instance, a breeding pair of Chestnut-sided Warblers was found in the Black Hills this summer — a first state breeding record. This record fills a gap in their breeding range between known breeding populations in the Front Range in Colorado and in the Turtle Mountains of North Dakota. I have recently returned from a July camping trip to the Black Hills. While there, I was able to chase down, in only about three hours of birding, at least two, and probably three, of the Virginia's Warblers in Roby Canyon that Jeff Palmer reported



earlier in the month. The habitat where these birds were located is mixed pinyon-juniper, with an understory dominated by Skunkbush Sumac (*Rhus aromatica*). This habitat type is found in only a few areas along the South Dakota/Wyoming border in southwestern South Dakota and is under birded. Jeff's report, if accepted by the Rare Bird Records Committee, will be the first state record for Virginia's Warbler. Yet he found at least 9 individuals, including several singing males, during the middle of their breeding season. This discovery suggests that these birds nest in the pinyon-juniper habitat in these canyons in extreme western South Dakota.

The Virginia's Warbler record nicely illustrates the main point that I want to make in this column — that a number of habitat types in South Dakota are under birded, and that some interesting surprises probably await those willing to thoroughly bird these areas. I have several suggestions for habitat types (and associated bird species) that deserve a closer look. First, the pinyon-juniper habitat where the Virginia's Warblers were found deserves more study. Species such as Green-tailed Towhee and Black-throated Gray Warbler breed in similar habitats in Wyoming, but they are not recorded as breeders in South Dakota. Sagebrush habitats in Fall River, Butte, and Harding counties in western South Dakota also merit in-depth coverage. The first state record for Sage Sparrow was from a meadow area near Custer in late May 1996 by Pete Petersen et al., but this group also found Sage Sparrows in sagebrush habitat near

Edgemont on this same trip. This sagebrush habitat is probably also the best bet for finding Black-throated Sparrows in South Dakota, although known breeding populations for this species only reach southwestern Wyoming. Shortgrass prairies in far-western South Dakota, particularly in the northwestern corner, are also under birded. The McCown's Longspur was an historic nester in these habitats, but the species has not been documented as a nesting here in recent times, although there are several summer records from Harding County.

Under-birded habitats are not only found in western South Dakota. A habitat in eastern South Dakota that deserves more birding attention is wet meadow/weedy field habitat. Henslow's Sparrows and Yellow Rails breed in these types of habitats in surrounding states, so they might be expected in South Dakota as well. Bob Rogers had at least two Henslow's Sparrows calling in mid to late June this year in this type of habitat near Woonsocket. These birds began calling just before dusk and continued calling after dark, so timing was important in finding them. Bob also had calling Yellow Rails in almost the same location as the Henslow's Sparrows in June 1996. These birds also began calling as darkness fell, so dusk or nighttime birding trips are likely required to properly document the occurrence of these species. Nocturnal owling trips in the Black Hills might also prove fruitful. A Flammulated Owl was mist-netted in August 1994 by Joel Tigner in open Ponderosa Pine forest near Pringle in Custer County. Because this record was a single observer sight record, it was rated as hypothetical for the state, but it seems likely that Flammulated Owls may occur more regularly in this habitat in South Dakota. In addition, Boreal Owls nest in mixed alder/aspens/spruce forests in Wyoming and Colorado. Might they also occur in similar habitats in the Black Hills?

These are just a few of the habitats, and their associated potential breeding birds, that merit further birding coverage in South Dakota. I invite any of you to take up the challenge of covering these habitats. I'm sure that some interesting birding is in store! *David Swanson, Department of Biology, University of South Dakota, Vermillion, South Dakota 57069.*

South Dakota State Lists

Totals as of 31 December 1996

Life	1996	Observer	Life	1996	Observer
346		Bruce K. Harris	253		Lowell Anderson
321	261	Dave Swanson	246		Bill Huser
318	264	Jeffrey S. Palmer	246		Lee A. Schoenewe
314		Dan A. Tallman	233		Bob Russell
303		D. George Prisbe	215		Gertrude Bachmann
300	142	Nathaniel R. Whitney	175		Florence Kurtz
295	245	Jerry C. Stanford	150		Lester R. Lauritzen
281		Jon Little			
280		Eric T. Liknes			
262	209	Robb F. Schenck			

In Memoriam Nathaniel R. Whitney, Jr., 1923-1997

L. M. Baylor
1941 Red Dale Dr., Rapid City, SD 57702

On 27 April 1997, Dr. Nathaniel R. Whitney, Jr., died from complications following heart surgery, at Rapid City, SD.

Born 24 November 1923, at Cincinnati, Ohio, Nat was the eldest of four sons born to Nathaniel R. Whitney, Sr., and Helen (Loos) Whitney. Following graduation from high school in 1941, at Glendale, Ohio, Nat attended Harvard University, where he majored in biology, a course of study fulfilling his youthful interests in the natural world, especially birds. Upon graduating *cum laude* from Harvard in 1944, Nat pondered the difficult choice of pursuing a doctorate in medicine or ornithology. The decision went to medicine with the expectation that ornithology would remain a primary avocation. Thus Nat earned his medical degree in 1948 from the University of Cincinnati.

Nat married Mary J. Schroeder on 27 June 1950, and their union was enriched by two children, Susan and John.

During 1951-1953, Dr. Whitney served as a medical officer in the United States Air Force. Following his military discharge, Nat and Mary moved to Rapid City, SD, where he specialized in pediatric medicine from 1953 to 1988. He appreciated the opportunity to practice medicine during an era of remarkable advancements, including new antibiotics and vaccines that enhanced the health of his young patients. Nurses and colleagues especially admired Nat's compassion for his patients. In the rare but inevitable instance when medical technology and skill could not save a child, Nat's grief very nearly matched that of the child's parents.

Professionally, Dr. Whitney held memberships in the American Medical Association, South Dakota Medical Association, Ninth District Medical Society, American Academy of Pediatrics, American Diabetes Association (for which he served as a state coordinator), Great Plains Organization of Perinatal Care, and the South Dakota Perinatal Association. In the last organization he was both a charter member and a past president.

As a public health servant, Dr. Whitney served for several years as the Public Health Officer of Pennington County, SD, and medical consultant for the State of South Dakota's hospital, near Custer, SD, for severely disabled people. His volunteer service as a pediatric consultant on the Rosebud and Pine Ridge reservations was rewarded by his induction into the Oglala Sioux Tribe as an honorary member with the name "White Feather."

Nat's commitment to ornithology, natural history, and conservation led him to memberships and to roles of service in many organizations. As a member of The Nature Conservancy, he served terms as chairman and trustee for the South Dakota Chapter. A member of Sigma Xi, the Scientific Research Society, Dr. Whitney served terms as president-elect and president for the South Dakota School of Mines and Technology Chapter. A long-time bird bander for the U. S. Fish and Wildlife Service,

Nat became a member of the Inland Bird Banding Association, and he served on the board of directors for that organization. At the time of his death, Nat was a life member of the American Ornithologists' Union, Cooper Ornithological Society, Wilson Ornithological Society, and, of course, the South Dakota Ornithologists' Union.

Nat Whitney served SDOU in many distinctive ways. From 1955 until his death, he was on the board of directors for SDOU. In addition, he served terms as SDOU's vice president, and he is the only person, thus far, elected to four one-year terms as the president of SDOU. During his long tenure as the chairman of SDOU's Checklist Committee, he was centrally involved with the compilation and publication of the organization's "Checklist of South Dakota Birds," in *South Dakota Bird Notes*, 8:13-19 (March 1956) and of the two state bird books: *The Birds of South Dakota*, 1978, and *The Birds of South Dakota*, Rev. Ed., 1991.

From 1967 through 1996, Nat was SDOU's representative as the South Dakota coordinator of breeding bird surveys for the U. S. Fish and Wildlife Service, and during that time he also conducted annual surveys of designated routes in the Badlands area and the Black Hills.

In addition to the previously mentioned publications, Nat contributed the article on the White-winged Junco in *Life Histories of North American Cardinals, Grosbeaks, Buntings, Towhees, Finches, Sparrows, and Allies, Part II* (U. S. National Museum Bulletin 237, Smithsonian, 1968). Also, in 1965, with Olin Sewall Pettingill, Jr., he co-authored *Birds of the Black Hills* (Special Publication No. 1, Cornell Laboratory of Ornithology).

A review of all five-year indexes to *South Dakota Bird Notes* reveals so many articles and notes by Nathaniel R. Whitney, Jr., that to mention all of them here seems impractical. Missed in that review, however, would be his many observations contributed through the "Seasonal Reports."

With Nat, I had the privilege of co-authoring two items about White-winged Juncos in *Bird-Banding* (45:269 and 47:301-305). Dr. Whitney also published several professional papers on human immunizations and infectious diseases.

Despite the demanding life of a physician and the time devoted to interests in bird banding and other ornithological concerns, Nat maintained his involvement with music, which developed from his childhood as he became proficient with the piano, violin, clarinet, and saxophone. As an adult he primarily played only the piano and experienced special pleasure as he accompanied his children during their development of skills with the clarinet (for Susan) and bassoon (for John). Nat also experienced recreational enjoyment by being the pianist in a Dixieland combo of medical doctors. After retirement in 1988, Nat finally had the time to attend rehearsals and participate in his church's choir.

Nat's wife, Mary, survived him by 45 days, as she died on 10 June 1997, after enduring deteriorating health for several years. Brothers John A. Whitney, Bethesda, MD, and Dickson L. Whitney, Newbury, OH, survive Nat, as do Nat and Mary's daughter, Susan Whitney Callahan, Rapid City, SD; and son, Dr. John T. Whitney, St. Joseph, MI.

To the family of Nathaniel R. Whitney, Jr., SDOU members extend their sympathy. Especially to Susan and John we express our gratitude for their generously sharing their father with us as he pursued his interest in birds and served SDOU with his time, talent, and wisdom. The

South Dakota Ornithologists' Union has lost a treasured member and friend.

PACIFIC LOON RECORD FOR SOUTH DAKOTA

Jeffrey S. and Deanna M. Palmer
821 NW 5th Street, Madison SD 57042

On 16 October 1991, we observed a Pacific Loon in Brookings County, South Dakota. This note is based on the documentation submitted to the South Dakota Rare Bird Records Committee, which accepted the record as a Class 2 (satisfactory written description) sighting (SDBN 45: 25). The observation occurred along the east side of U.S. Highway 81 approximately 2.8 miles south of the junction with U.S. Highway 14. Driving north at just under 60 mph, we glimpsed an apparent pale-headed loon on the lake; it was approximately 40 to 50 yards offshore. After stopping and turning around, we were able to relocate the bird as it repeatedly dove. We watched it from 3:40 to 4:00 PM with 10x50 Pentax binoculars and a 15x-40x Bushnell spotting scope at distances from 50 to 70 yards. Having observed this species on many occasions (in both breeding and nonbreeding plumage) during our 6 years living in Washington, we both recognized the bird as a Pacific Loon. The following field marks were observed and recorded at the time of the observation; no field guides were consulted. The bird in question was obviously a loon but with a sharp contrast between the darker back and the uniform, pale-gray neck and head. In fact, the paleness of the head was noticeable enough to attract our original attention, as we passed by along the highway at 60 mph! The checkered black-and-white back pattern was visible, although the bird was clearly not in breeding plumage. The head was smooth and rounded with a soft, puffy appearance. There was no indication of the flat-headed, double-bumped profile of a Common Loon. The diagnostic chin strap was present; this field mark could be seen with binoculars alone, but was more apparent when the bird was observed through the spotting scope. The head and hind-neck were pale gray. The throat and chest were white, and the characteristic dark gray border between the pale gray head and neck and the white throat was clearly present. This dark border extended up the neck and over the top edge of the eye. The white on the neck seemed to extend up onto the cheek just behind the eye. A dark lore spot was also observed. In size, the bird was apparently smaller-bodied than a typical Common Loon, however, no direct comparison was possible. The bill was noticeably small and straight, quite unlike the dagger-like bill of a Common Loon. Robert and Nancy Buckman also observed the bird (later that evening) and concurred with the identification.

This observation represents the first documented record of a Pacific Loon in South Dakota. The second record occurred one year later on 27 October 1992 when Bruce K. Harris located a single bird at Bullhead Lake in Deuel County (SDBN 46: 31). This species should be watched for more carefully in South Dakota. It is considered a rare but regular fall migrant in Wyoming and has occurred in 15 counties in Minnesota. There are five records in North Dakota. So study up on loon identification, go out

SOUTH DAKOTA BIRD NOTES 49(3): 59

SEPTEMBER 1997

birding, and, if you see something unusual, take good field notes. But be careful; identification is tricky and there is a fair amount of variability in Common Loons. Of course, keep your eyes open for a Red-throated Loon as well (5 South Dakota records, considered casual in Wyoming, recorded in 12 Minnesota counties, 5 North Dakota records). Of course if you're really lucky you'll turn up a Yellow-billed Loon, our prediction for one of the next (and long overdue) species to be added to the South Dakota list.

FIRST RECORD OF MEW GULL FOR SOUTH DAKOTA

David Swanson

University of South Dakota, Vermillion SD 57026

On 30 November 1996, I was birding the tailrace below Fort Randall Dam. It was cold and clear on that day, following a snow storm on the previous day. At approximately 4:00 PM, I noticed an unusual gull circling above the water among a flock of gulls composed of numerous Ring-billed Gulls and a few Herring and Bonaparte's Gulls. Ron Mabie was also present and shortly located this bird as well. We viewed the gull for about three minutes at a distance of 50 to 100 yards, before it circled up and over the dam toward Lake Francis Case. The unusual gull was slightly, but noticeably, smaller than nearby Ring-billed Gulls. The mantle and upper wings were a medium gray, noticeably darker than the back of a Ring-billed Gull. The bird exhibited a prominent white leading and trailing edge to the upper wings, giving the appearance of a gray wing neatly outlined in white. The white leading edge was noticeably broader than on nearby Ring-bills. A prominent white window was present on the outer primaries of both the upper- and underwings near the wing tip; otherwise the wing tips were blackish. The remainder of the underwing was whitish. The head was whitish with a diffuse gray wash, most concentrated on the nape. The gull's bill was short, thin, and rather dainty, much smaller than the bill of a Ring-billed Gull.

Mew Gulls breed mainly in Alaska and northwestern Canada with a breeding population also present in northeastern Manitoba. The typical wintering range is along the west coast of North America (AOU 1983). This record has been reviewed and accepted by the South Dakota Rare Bird Records Committee and constitutes the first Mew Gull record for South Dakota. There are six records of Mew Gull for North Dakota (Martin 1997) and four for Iowa (Kent and Dinsmore 1996). All of the Iowa records are from December. There are two records of Mew Gulls for Minnesota; one bird on 19 September 1982 in Lake County (Eckert 1994) and another record from Lake Winnibigoshish, Cass County on 10 November 1997 (Tessen, 1997). Nebraska has four records for Mew Gull, all from 1996 and 1997, with two records from late fall and winter and two from April and May (M. Brogie, pers. comm.). The general picture that emerges from these records is that the Mew Gull is a very rare late fall migrant, and even rarer spring migrant, through the northern Great Plains, occurring mostly at tailraces below dams, but also at lakes and reservoirs with open water.

Literature Cited

- American Ornithologists' Union. 1983. Checklist of North American birds, 6th ed. Allen Press, Lawrence, Kansas.
- Eckert, K. R. 1994. A birder's guide to Minnesota, 3rd ed. Williams Publications, Plymouth, Minnesota.
- Grant, P. J. 1986. Gulls: a guide to identification, 2nd ed. Buteo Books, Vermillion, South Dakota.
- Kent, T. H., and J. J. Dinsmore. 1996. Birds in Iowa. Kent and Dinsmore, Iowa City and Ames, Iowa.
- Martin, R. 1997. Northern Great Plains regional report. NAS Field Notes 51:75-76.
- Tessen, D. D. 1997. Western Great Lakes regional report. NAS Field Notes 51:56-61.



GENERAL NOTES

ROBIN AND HOUSE FINCH BANDING RECOVERIES. At my feeder in Aberdeen, South Dakota, on 9 November 1996, I trapped a male House Finch with an unfamiliar band number (1351-78469). The Bird Banding Laboratory has informed me that this bird was banded by R. N. Randall near Bismark, North Dakota, on 2 January 1996.

An American Robin that I banded (912-92738) in my backyard in Aberdeen on 1 November 1995 was found by Robert Randall and Les Helm at Mandan, North Dakota, on 7 April 1997. (Mandan is on the west side of the Missouri River opposite Bismark, see Figure 1.) *Dan Tallman, Northern State University, Aberdeen SD 57401*

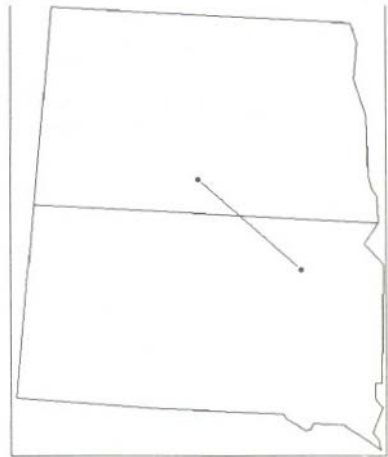


Fig. 1 Robin and House Finch Recoveries

WESTERN MEADOWLARK ATTACKS HOUSE SPARROW. After the brunt of an April 1997 blizzard, Sue Sheffer and I were busy caring for our resident bird population. We scattered straw on the lee side of the house and spread out food throughout the straw. This gave the birds straw to nestle down in and food to eat while being out of the wind.

We fed large numbers of birds. I counted 20+ meadowlarks, 50+ Red-winged Blackbirds, 100+ House Sparrows, 12 or so Horned Larks, and 25 to 20 starlings, all concentrated in an area of about 20 by 15 feet. While looking out of the window, I noticed that a meadowlark had grasped a House Sparrow in its foot and was pecking vigorously on its head. The

House Sparrow struggled for a short time, then stopped and appeared to be dead. The meadowlark kept pecking it on the head for another 20 to 30 seconds. It did not attempt to eat the House Sparrow. During the time that the House Sparrow was alive and struggling, a Red-winged Blackbird and a starling each attempted to join in the fight, or perhaps tried to break it up by jumping on the back of the meadowlark. The meadowlark paid no attention to either one of them.

The whole altercation lasted for several minutes. Afterward, the birds returned to normal feeding patterns, ignoring the House Sparrow lying in a considerable pool of blood. I went out to retrieve the sparrow and it was gone. Evidently, it was knocked out or still had enough life to get away from the feeding area. I wonder if this altercation could have originated from too many birds competing in too small a space, an inherent dislike for the House Sparrows by the meadowlark, or perhaps stress brought on by eminent danger of starvation. In any case, it was difficult not to come to the sparrow's aid, although by the time I observed the event, the sparrow had already been severely damaged. *Jon Sharps, 22576 151st Ave., Box Elder, SD 57719.*

AOU CHECKLIST CHANGES AFFECTING THE SOUTH DAKOTA CHECKLIST. The American Ornithologists' Union recently published its Forty-first supplement to its Check-list of North American Birds in the *Auk* 114:542-552. A number of changes will affect how we report birds in South Dakota.

Changes for listers include the splitting off of three species of vireos and also the making to two species of Plain Titmice. The Solitary Vireo is divided into three species: the Blue-headed Vireo, *Vireo solitarius*; the Cassin's Vireo, *Vireo cassinii*; and the Plumbeous Vireo, *Vireo plumbeus*. Basically, the Blue-headed Vireo, which breeds from British Columbia across Canada to central Minnesota across to New England, is a migrant through South Dakota. The Plumbeous Vireo breeds in the Black Hills and also other western states (Nevada, Utah, Wyoming, Montana, and Northwestern Nebraska south to Arizona and western Mexico). The Cassin's Vireo is not expected in South Dakota, being a bird of the Pacific Northwest (although it migrates through Colorado on its way to Mexico). The Plain Titmouse is replaced by the Oak Titmouse, *Baeolophus inornatus*, (found in California) and the Juniper Titmouse, *Baeolophus ridgwayi* (a bird of the Rocky Mountains and a potential addition to the South Dakota list).

Patonymic common names, like Harris' Sparrow, will henceforth be written "s's" (Harris's Sparrow).

Many of the changes in the AOU check-list are the result of DNA-DNA hybridization studies. Our vultures (Cathartidae) are moved from the order Falconiformes and placed into the order Ciconiiformes, which include the storks. North American quail are now considered a family, Odontophoridae. Starlings now follow mockingbirds in checklist order. Current subfamilies of the Muscicapidae and Emberizidae are now considered as families. Kinglets are removed from the Muscicapidae and now given the rank of family, Regulidae.

The sequence of various families (ducks, grouse, tanagers, finches, to name but a few). will be different in forthcoming checklists. We will have

to await the publication next year of the 7th edition of the AOU Checklist to learn the exact sequence.

The following species have undergone changes in scientific names:

Old Name	New Name
American Golden Plover, <i>Pluvialis dominicus</i>	American Golden Plover, <i>Pluvialis dominica</i>
Burrowing Owl, <i>Speotyto cunicularia</i>	Burrowing Owl, <i>Athene cunicularia</i>
Olive-sided Flycatcher, <i>Contopus borealis</i>	Olive-sided Flycatcher, <i>Contopus cooperi</i>
Cliff Swallow, <i>Hirundo pyrrhonota</i>	Cliff Swallow, <i>Petrochelidon pyrrhonota</i>
Black-capped Chickadee, <i>Parus atricapillus</i>	Black-capped Chickadee, <i>Poecile atricapillus</i>
Tufted Titmouse, <i>Parus bicolor</i>	Tufted Titmouse, <i>Baeolophus bicolor</i>

With the publication of the upcoming 7th edition of the AOU checklist, we will publish a revised South Dakota Checklist incorporating these changes. Dan Tallman, Northern State University, Aberdeen SD 57401.



BOOK REVIEWS

ALL THE BIRDS OF NORTH AMERICA—American Bird Conservancy's Field Guide. 1997. HarperCollins Publications, New York. 180 pp. soft bound \$19.95.

This book's cover claims it to be "a revolutionary system based on feeding behaviors and field-recognizable features." I am not sure that this system qualifies as being revolutionary. Peterson had a similar system for identification in his field guides. The result of the revolutionary system in *All the Birds...* is that I usually have to waste time searching for a specific bird, and end up looking it up in the index. I can see no reason why beginning birders should not be familiar with the basic taxonomic order of birds. (An example is the plate with the Yellow-breasted Chat and Gray Catbird—whatever family chats belong to, they certainly aren't catbirds. This grouping is completely artificial and arbitrary.)

This book begins with a bizarre section of computer-generated photographs of extinct birds (Ivory-billed Woodpecker, Carolina Parakeet, etc.). This is a complete waste of space and technology. Why would a field guide include birds that can not possibly be seen in the field? The book begins with an advertisement for the American Bird Conservancy, which apparently publishes a magazine called *Bird Conservation*. The end of the book is even more commercial. There readers are asked if they want to purchase "fine art prints" of the illustrations from the book.

The bulk of the book is a fairly standard field guide. Fine illustrations grace the upper two-thirds of most pages; short descriptions of field marks, ranges, habits, and habitats fill the remainder of the page. An extremely small and hard to read range map accompanies each account. Each page covers about two species. This low species per page means that

it is difficult to compare similar species at once. I prefer the four or five species covered on a Peterson page. A further problem is that rare species are placed towards the top of the appropriate page, but they are small and completely out of scale to the more common species. Figuring out the relative size of birds is one of the most difficult things for beginners to do. Finally, I found the range maps, which accompany each account, to be small and barely legible. Part of the problem is that Mexico is completely left off, creating a great inland sea to our south. The size makes orientation within any given state nearly impossible. The colors on the maps are not sufficiently contrasting.

I have launched into this review being highly critical. However, the paintings are done by a dozen artists and the illustrations are uniformly excellent. They tend to be more artistic than those in other guides, complete with background habitats. The warblers and vireos by Larry McQueen are especially exquisite. The sparrow plates are far superior to those in the National Geographic field guide. Nevertheless, occasionally the illustrations do fall short. A two-page plate on *Empidonax* flycatchers is probably wasted space, since it implies *Empidonax*'s can be identified by sight by beginners. The Alder/Willow Flycatcher, for example, is too gray and does not have a conspicuous enough eye ring. On another plate, showing gull plumages, Herring and Thayer's Gulls are shown side-by-side, which is helpful. Unfortunately, although a first summer flying Herring is depicted, the only first summer Thayer's is perched, making a comparison difficult.

You probably do want to purchase this book. It will augment but not replace your bird identification library. It is, for example, the only field guide I know of that includes a portrait of a juvenile-plumaged Horned Lark. The price is inexpensive. Just don't expect your birding to be revolutionized by it. The birding community still waits a truly revolutionary guide—one that covers all the recognizable forms and plumages of North American birds. Dan Tallman, Northern State University, Aberdeen, SD 57401.

THE IOWA BREEDING BIRD ATLAS—Laura Spess Jackson, Carol A. Thompson, and James J. Dinsmore. 1996. University of Iowa Press, Iowa City. 484 pp. Soft bound \$24.95.

The Iowa Ornithologists' Union and the Iowa Department of Natural Resources have spared no expense in the production of this book. The Iowa project had 508 participants, compared to the 70-odd contributors to our South Dakota atlas. (Indeed, I overheard that the IOU makes no pretense of even hoping to break even financially on the sales of this book.) I suspect the data they collected would give a correspondingly better picture of the breeding birds of Iowa than we were able to collect for our state. The book is almost worth buying for the cover picture of Bobolinks among prairie wildflowers.

The Iowa book is larger than ours in almost every respect. It is a bound book, not spiral. The overall dimensions are larger. Accounts are two pages long (ours are only one) and include a black and white photograph of each species (ours has none). The Iowa maps are large and easy to read. Whereas our text for each species is only about an inch or two long, the Iowa species text covers most of two pages and includes

references to Breeding Bird Surveys and a host of other citations, life history accounts, and a discussion of factors affecting distribution.

Introductory chapters include an introduction (methods and materials), a description of Iowa's physical environment, a summary of results, a discussion of factors affecting distribution, and then the species accounts. A long references cited section should be of particular interest to people studying birds in southeastern South Dakota.

Most South Dakotans will be interested in obtaining this state of the art reference to the birds of our neighboring state. For example, we learn that the Acadian Flycatcher, a bird historically but not recently known from South Dakota, really is a bird of eastern Iowa, so is not to be expected in our state. Similarly, our sporadic sightings of Louisiana Waterthrushes are not due to their breeding nearby in Iowa, in fact, the Northern Waterthrush was not recorded in the Iowa atlas project. *Dan Tallman, Northern State University, Aberdeen, SD 57401.*

South Dakota County Lists

Totals as of 31 December 1996

<u>Life</u>	<u>1996</u>	<u>Observer</u>	<u>Life</u>	<u>1996</u>	<u>Observer</u>
Brookings			Kingsbury		
152		Jeffrey S. Palmer	192	157	Jeffrey S. Palmer
138		Florence Kurtz	Lake		
101		Ron Bauer	220	178	Jeffrey S. Palmer
Brown			Lincoln		
277		Dan A. Tallman	156		Jon Little
191		Bob Russell	Meade		
186	160	Jerry C. Stanford	153		Nathaniel R. Whitney
Charles Mix			Minnehaha		
180		Ron Mabie	209	166	Robb F. Schenck
Clay			209		Jon Little
210		Dave Swanson	Pennington		
Codington			210		Nathaniel R. Whitney
236		Bruce K. Harris	Roberts		
221	167	Ron Bauer	274		Bruce K. Harris
Custer			Sanborn		
100		Nathaniel R. Whitney	231		Bruce K. Harris
Davison			Turner		
166		Robb F. Schenck	150		Lester R. Lauritzen
Deuel			115		Jon Little
274		Bruce K. Harris	Union		
106		Lowell Anderson	189		Dave Swanson
Grant			120		Bill Huser
172		Lowell Anderson			



SEASONAL REPORTS

The 1997 Spring Season

01 March 1997 to 31 May 1997

Compiled By : Jeffrey S. Palmer
College of Natural Sciences
Dakota State University
Madison, SD 57042

There were 309 species reported for the season; the average (1995-96) is 297. March temperatures in the northeast were decidedly cooler than normal; April and May were cold statewide; precipitation was average. The highlight of the season for many was a 2nd State Record **Ruff** first located on 06 May along the Big Sioux River in Baltic, Minnehaha County by Robert F. Schenck. This bird was subsequently enjoyed by many as it remained in the area until at least 10 May. The only previous record occurred on 08 April 1977 in Bennett County. Two other 2nd State Records, a Lesser Black-backed Gull in Lake County and a White-winged Dove in Lawrence County, were not as cooperative. A Yellow-crowned Night-Heron in Minnehaha County would be only the 2nd sighting in the last 6 years; this species should be considered casual in the state. Still rare but perhaps becoming regular, a Black-necked Stilt in Brown County and a Whimbrel in Hand County. The Great Gray Owls which brightened the 1996-97 Winter Season were relocated in the Pine Lake Hills area of Sioux Falls, Minnehaha County on 18-19 March. Considered accidental in the Black Hills, a Yellow-throated Vireo made its way to Meade County. Warblers poured through in late May. Included in the fallout were Black-throated Blue Warblers in Brown County and Butte County, a Prothonotary Warbler in Roberts County and two in Lake County, two Worm-eating Warblers banded in a Clay County shelterbelt, a Louisiana Waterthrush in Union County, and a Kentucky Warbler in Minnehaha County. A season high 19 species of warblers were observed at Lake Herman State Park on the very late date of 29 May. Lastly, Great-tailed Grackles, which might soon become regular in the state, were reported from Minnehaha, Miner, Charles Mix (at least 4 sightings), and Gregory (probable confirmed nesting in Wagner) counties.

Below, I have tried to highlight the more significant sightings (dates which are earlier/later than listed in The Birds of South Dakota and species which are out of range). For early/late migration dates, I have listed the three earliest/latest dates (by county); however, if these did not include a sighting East River, West River, and along the Missouri River, I have given the earliest/latest date in the missing region also. Included at the end is a list of species which were not reported this year and might be expected during the Spring Season; a number in parentheses indicates the number of consecutive years (out of 3) the species has appeared on the list.

Common Loon Early: 27 Mar Yankton SVS; 03 Apr Charles Mix RM; 12 Apr Meade EEM, RAS; 12 Apr Lake JSP; 12 Apr Gregory LAS ... Late: 29 May Yankton SVS; 27 May Day DRS; 19 May Stanley JSP, RFS; 12 May Meade EEM, REP

Pied-billed Grebe Early: **15 Mar Minnehaha RFS**; 25 Mar Day DRS; 01 Apr Yankton SVS; 10 Apr Bennett LCS

Horned Grebe Early: **23 Mar Charles Mix RM**; 05 Apr Yankton DS; 12 Apr Lake Sharpe RBA; 15 Apr Brown JCS ... Late: 13 May Meade VDF; 01 May Lake JSP; 22 Apr Hamlin BKH; 22 Apr Pennington RAS; 12 Apr Charles Mix LAS

Red-necked Grebe All Reports: 26 Apr Day JSP; 13 May Day DRS; 15 May and 25 May Roberts *fide* BKH; 30 May McPherson SLS

Eared Grebe Early: 28 Mar Yankton SVS; 30 Mar Charles Mix LAS; 07 Apr Lake KB; 10 Apr Bennett LCS

Western Grebe Early: 09 Apr Minnehaha RFS; 16 Apr Bennett LCS; 19 Apr Brown SLS; 19 Apr Miner JSP; 19 Apr Charles Mix RM

Clark's Grebe All Reports: **03 May** and 19 May **Willow Lake, Clark County JSP**, RFS

American White Pelican Early: **24 Mar Yankton SVS**; **27 Mar Bennett LCS**; 31 Mar Charles Mix LAS; 01 Apr Day DRS

Double-crested Cormorant Early: 26 Mar Charles Mix LAS; 28 Mar Bennett LCS; 28 Mar Minnehaha RFS

American Bittern Early: 16 Apr Bennett LCS; 24 Apr Beadle BKH; 24 Apr Clark JSP

Great Blue Heron Early: **07 Mar Charles Mix LAS**; **10 Mar Bennett LCS**; **16 Mar Butte RAS**; **18 Mar Brown JCS**

Great Egret Early: **04 Apr Day DRS**; 18 Apr Lake KB; 19 Apr Miner JSP; 19 Apr Charles Mix RM; 03 May Tripp (2) MMM

Snowy Egret All Reports: 03 May and 19 May Clark JSP, RFS; 07 May Hamlin BKH; 10 May Brown SLS; 25 May Brookings BH

Little Blue Heron All Reports: 12 May Clay RBA; 19 May Brown (3) SLS; 20 May Yankton SVS; 25 May Lake Poinsett BH

Cattle Egret Early: **18 Apr Beadle BKH**; 19 Apr Brown SLS; 03 May Douglas and Hutchinson RM; 15 May Bennett LCS; 23 May Charles Mix LAS

Green Heron Early: 10 May Brookings KIE; 10 May Lake JSP; 10 May Lincoln SFB; 10 May Yankton SVS

Black-crowned Night-Heron Early: 08 Apr Bennett LCS; 09 Apr Miner RK; 13 Apr Lake KB; 18 Apr Yankton SVS

White-faced Ibis Early: **17 Apr Brown SLS**; **21 Apr Hughes (2) DB**; 01 May Day (17) DRS

Tundra Swan All Reports: 17 Mar Brown (2) JCS; 30 Mar Brown (6) SLS; 05 Apr Lake JSP

Trumpeter Swan Only Report: Bennett County LCS, SVS

Greater White-fronted Goose Early: **03 Mar Bennett SVS**; **03 Mar Yankton RBA**; 08 Mar Deuel *fide* BKH ... Late: **15 May Union SVS**; 12 Apr Lake JSP; 09 Apr Minnehaha RFS; 28 Mar Bennett LCS

Snow Goose Early: 03 Mar Bennett (500) LCS; 03 Mar Yankton RBA; 07 Mar Charles Mix RM; 08 Mar Deuel BKH; 08 Mar Minnehaha KB ... Late: **26 May Union (5) SVS**; **23 May Brown JCS**; 19 May Kingsbury JSP, RFS; 11 May Butte RAS

Ross' Goose Early: **01 Mar Bennett LCS**; **09 Mar Clay SVS**; **15 Mar Charles Mix (2) DS**; 25 Mar Hamlin BKH ... Late: **10 May Brown JCS**; **14 Apr Day (4) DRS**; 12 Apr Minnehaha RFS; 05 Apr Clay (11) DS

Wood Duck Early: **04 Mar Pennington SVS**; **08 Mar Stanley JSP**; **09 Mar Bennett LCS**; 25 Mar Day DRS

Green-winged Teal Early: 05 Mar Bennett JSP; 10 Mar Yankton SVS; 20 March Oahe Dam DB; 26 Mar Minnehaha RFS

American Black Duck Only Report: **03 Mar Yankton (6) RBA**

Northern Pintail Early: 01 Mar Bennett LCS; 03 Mar Yankton SVS; 09 Mar Charles Mix RM, LAS; 22 Mar Lake JSP

Blue-winged Teal Early: **15 Mar Charles Mix RM**; 23 Mar Meade REP; 26 Mar Yankton SVS; 27 Mar Minnehaha RFS

Cinnamon Teal All Reports: 08 Apr Bennett LCS; 26 Apr Bear Butte Lake, Meade County EEM; 10-17 May Folsom, Custer County MMM

Northern Shoveler Early: **01 Mar Meade RAS**; **01 Mar Bennett LCS**; 16 Mar Minnehaha RFS; 20 Mar Bon Homme SVS

Gadwall Early: 03 Mar Yankton SVS; 05 Mar Pennington TBW; 09 Mar Meade EEM; 23 Mar Day DRS

American Wigeon Early: 04 Mar Pennington SVS; 09 Mar Meade EEM; 12 Mar Yankton RBA; 23 Mar Minnehaha RFS

Canvasback Early: 03 Mar Yankton SVS; 05 Mar Bennett LCS; 09 Mar Charles Mix RM; 22 Mar Lake JSP

Redhead Early: 03 Mar Yankton SVS; 06 Mar Charles Mix LAS; 06 Mar Bennett LCS; 06 Mar Fall River JSP; 23 Mar Minnehaha RFS

Ring-necked Duck Early: 03 Mar Yankton SVS; 05 Mar Fall River JSP; 07 Mar Charles Mix LAS; 21 Mar Deuel BKH

Greater Scaup All Reports: 05 Mar Hughes DAT; 15 Mar Charles Mix RM; **28 Apr Hamlin BKH**

Lesser Scaup Early: 01 Mar Charles Mix LAS; 03 Mar Yankton SVS; 05 Mar Bennett JSP; 21 Mar Grant (6) BKH

Common Goldeneye Late: 26 Apr Day JSP; 22 Apr Beadle (6) BKH; 16 Apr Meade REP; 26 Mar Yankton SVS

Barrow's Goldeneye Only Report: 07 Mar Canyon Lake, Pennington County JSP

Bufflehead Early: 01 Mar Bennett LCS; 01 Mar Charles Mix LAS; 05 Mar Hughes DAT; 24 Mar Brown SLS ... Late: 15 May Brown REM; 10 May Lawrence VDF; 04 May Minnehaha RFS; 03 May Clay SVS

Hooded Merganser Early: **03 Mar Yankton SVS**; **06 Mar Fall River JSP**; 13 Mar Bennett LCS; 25 Mar Day (4) DRS ... Late: 10 May Bennett TJ; 23 Apr Yankton SVS; 19 Apr Charles Mix RM; 19 Apr Lake JSP; 19 Apr Minnehaha RFS

Common Merganser Late: 19 May Hughes JSP, RFS; 06 May Hamlin BKH; 27 Apr Minnehaha RFS; 18 Apr Pennington TBW

Red-breasted Merganser Early: **07, Mar Charles Mix RM**; **12 Mar Yankton RBA**; 29 Mar Minnehaha RFS ... Late: 10 May Yankton SVS; 19 Apr Deuel BKH; 19 Apr Miner JSP; 19 Apr Oahe Dam DB; 19 Apr Minnehaha RFS

Ruddy Duck Early: 10 Mar Yankton SVS; 20 Mar Charles Mix LAS; 22 Mar Lake JSP; 10 Apr Bennett LCS

Turkey Vulture Early: 31 Mar Minnehaha *fide* RFS; 02 Apr Butte RAS; 04 Apr Bon Homme SVS

Osprey Early: 16 Apr Pennington (2) TJ, KH; 17 Apr Custer CMW; 24 Apr Lake KB; 30 Apr Charles Mix LAS ... Late: 16 May Lincoln BKH, REM; 15 May Union SVS; 14 May Yankton RBA; 04 May Meade (6) EEM

Northern Harrier Early: 05 Mar Bennett JSP; 06 Mar Charles Mix LAS; 09 Mar Yankton SVS; 16 Mar Minnehaha RFS

Sharp-shinned Hawk Late: 06 May Hughes DB; 03 May Lake JSP; 03 May Tripp MMM

Northern Goshawk Only Report: 07 Mar Brookings KIE

Broad-winged Hawk Early: **27 Mar Butte RAS**; **28 Mar Lake KB**; 24 Apr Day DRS; 03 May Clay SVS ... Late: 24 May Brookings BH; 24 May Roberts JSP; 16 May Meade REP; 07 May Yankton (5) SVS

Swainson's Hawk Early: **22 Mar Lake KB**; 01 Apr Day DRS; 17 Apr Minnehaha RFS; 18 Apr Dewey REP; 26 Apr Meade EEM

Rough-legged Hawk Late: 15 Apr Lake RK; 30 Mar Custer CMW; 27 Mar Faulk MMM; 27 Mar Butte RAS; 09 Mar Yankton SVS

Merlin All Reports: 22 Mar Hanson SVS; 27 Mar Brown JCS; 30 Mar Meade REP; 03 May Kingsbury JSP; 10 May Meade EEM; 10 May Lawrence VDF

Peregrine Falcon Early: 30 Mar Miner RK; 03 May Meade EEM, REP; 03 May Minnehaha RFS ... Late: 16 May Pennington TJ; 16 May Minnehaha REM; 15 May Roberts BKH

Ruffed Grouse Only Report: 10 May Custer CMW

Sage Grouse Only Report: 08 Mar Butte JSP

Greater Prairie Chicken All Reports: 24 Mar Charles Mix LAS; 26 Mar - 30 Apr Ft. Pierre National Grassland (84 males on 10 leks) DB; 31 Mar Roberts JSP; 03 May Tripp (3) MMM; 10 May Tripp RAP

Sharp-tailed Grouse reported 15 Apr Aurora LAS; also 26 Mar - 30 Apr Ft. Pierre National Grasslands (23 males on 2 leks) DB

Northern Bobwhite Only Report: 01 Mar Pennington (introduced) TBW

Virginia Rail All Reports: **04 May Clay DS**; **06 May** and 15 May **Sanborn RGR**; 10 May Brown DAT, SLS; 13 May Yankton SVS; 19 May Lake JSP, RFS

Sora Early: **25 Apr Sanborn RGR**; **25 Apr Lincoln LAS**; **25 Apr Clay DS**; 03 May Tripp MMM

Sandhill Crane Early: **16 Mar Charles Mix RM**; 26 Mar Day DRS; 26 Mar Yankton SVS; 28 Mar Bennett LCS ... Late: 10 May Bennett TJ; 01 May Pennington (8) MMM; 23 Apr Beadle (800) BKH; 20 Apr Hughes (4) DB

Whooping Crane All Reports: **27 Mar Aberdeen, Brown County (1 flying overhead) DAT**; 12 Apr Hughes (2+) RBA; 12 Apr (2) and 15 Apr (2) Charles Mix RBA; 16 Apr Charles Mix (3) RBA; 17 Apr Brule (4) RBA; 17 Apr Hughes (5) RBA; 20-21 Apr Hughes (4) RBA

Black-bellied Plover Early: 13 May Minnehaha RFS; 14 May Meade RAS; 17 May Lake JSP; 17 May Charles Mix LAS ... Late: 26 May Custer TJ; 24 May Day JSP; 20 May Minnehaha RFS

American Golden-Plover Early: 18 Apr Minnehaha RFS; 07 May Yankton SVS; 08 May Brown ... Late: 21 May Brown (300) DAT; 19 May Stanley JSP, RFS; 15 May Union SVS; 15 May Roberts REM

Semipalmated Plover Early: 03 May Minnehaha RFS; 08 May Brown DAT; 08 May Hamlin (2) BKH ... Late: 25 May Miner JSP; 20 May Brookings KB; 16 May Minnehaha and Roberts REM

Piping Plover All Reports: 03-04 May Minnehaha RFS; 19 May Hughes JSP, RFS

Killdeer Early: 10 Mar Lake KB; 11 Mar Gregory RM; 12 Mar Yankton SVS; 12 Mar Bennett LCS

American Avocet Early: 20 Apr Charles Mix (40) RM; 04 May Bennett LCS; 06 May Brown DAT

Greater Yellowlegs Early: 01 Apr Brookings KB; 05 Apr Kingsbury JSP; 10 Apr Minnehaha RFS; 14 Apr Charles Mix LAS; 19 Apr Custer MMM ... Late: 15 May Union SVS; 15 May Brown REM; 10 May Tripp RAP

Lesser Yellowlegs Early: 17 Apr Minnehaha RFS; 22 Apr Beadle (3) BKH; 22 Apr Charles Mix RM; 02 May Custer (35) MMM ... Late: 24 May Butte RAS; 17 May Yankton SVS; 17 May Union REM; 15 May Minnehaha RFS

Solitary Sandpiper Early: 30 Apr Minnehaha RFS; 02 May Butte RAS; 02 May Clay SVS ... Late: 20 May Miner JSP; 17 May Union REM; 14 May Meade REP

Willet Early: 17 Apr Brown (10) SLS; 24 Apr Beadle BKH; 24 Apr Minnehaha RFS; 01 May Charles Mix (5) LAS; 02 May Custer (3) MMM

Spotted Sandpiper Early: 03 May Lake JSP; 04 May Minnehaha RFS; 07 May Custer (2) MMM; 07 May Yankton SVS

Upland Sandpiper Early: 27 Apr Tripp RAP; 28 Apr Clay DS; 02 May Bon Homme LAS; 02 May Custer MMM

Long-billed Curlew Early: 03 Apr Bennett LCS; 15 Apr Custer MMM; 17 Apr Meade (4) EEM; **24 May Oakwood Lakes, Brookings County (32) BH**

Hudsonian Godwit Early: 17 Apr Minnehaha RFS; 20 Apr Charles Mix RM; 21 Apr Hughes (4) DB ... Late: 21 May Roberts (47) BKH; 20 May Brookings KB; 19 May Lake JSP, RFS

Marbled Godwit Early: 12 Apr Meade EEM; 15 Apr Aurora LAS; 23 Apr Beadle BKH

Ruddy Turnstone Early: 09 May Charles Mix (3) LAS; 10 May Brown DAT, SLS; 17 May Yankton SVS ... Late: 27 May Lake JSP; 27 May Day (15) DRS; 15 May Brown REM

Sanderling All Reports: 01 May Charles Mix LAS; 09 May Lake JSP; 10 May Brown SLS; 12 May Brown DAT; 16 May Roberts REM; 24 May Hamlin JSP

Semipalmated Sandpiper Early: 26 Apr Brown DAT; 29 Apr Brookings RK; 04 May Minnehaha RFS; 09 May Union SVS; 10 May Tripp RAP ... Late: 25 May Charles Mix RM; 20 May Bennett LCS; 16 May Minnehaha and Roberts REM

Western Sandpiper Only Report: 14-15 May Hughes, Sarah J. Kringel

Least Sandpiper Early: 07 May Minnehaha RFS; 09 May Union SVS; 10 May Brown DAT, SLS; 10 May Lake JSP; 10 May Tripp RAP ... Late: 17 May Clay REM; 16 May Minnehaha and Roberts REM

White-rumped Sandpiper Early: 08 May Brown DAT; 08 May Hamlin (3) BKH; 09 May Brookings (15) KB; 17 May Yankton SVS ... Late: 29 May Yankton SVS; 17 May Lake JSP; 16 May Minnehaha REM

Baird's Sandpiper Early: 07 Apr Lake JSP; 09 Apr Minnehaha RFS; 26 Apr Brown DAT; 07 May Yankton SVS; 10 May Tripp RAP ... Late: 16 May Roberts REM; 15 May Brown REM; 13 May Hutchinson SVS

Pectoral Sandpiper Early: 18 Apr Minnehaha RFS; 23 Apr Beadle (2) BKH; 05 May Union DS ... Late: 17 May Charles Mix LAS; 17 May Union REM; 16 May Minnehaha and Roberts REM

Dunlin Early: **18 Apr Minnehaha RFS; 24 Apr Brown JSP**; 09 May Union SVS ... Late: 27 May Lake JSP; 20 May Roberts (42) BKH; 15 May Minnehaha RFS

Stilt Sandpiper Early: 09 May Union SVS; 10 May Brown DAT; 10 May Tripp RAP ... Late: 17 May Lake JSP; 16 May Minnehaha REM; 15 May Brown REM

Buff-breasted Sandpiper All Reports: 19 May Hand JSP, RFS; 20 May Roberts BKH

- Short-billed Dowitcher** All Reports: **28 Apr Brown (4) JCS**; 06 May Brown DAT; 06 May Beadle (8) BKH; 10 May Brown SLS; 16 May Minnehaha and Roberts REM
- Long-billed Dowitcher** Early: 26 Apr Miner RK; 28 Apr Hamlin BKH; 01 May Beadle JCS; 03 May Charles Mix RM; 08 May Meade REP ... Late: 19 May Stanley JSP, RFS; 15 May Brown REM; 10 May Minnehaha RFS; 10 May Tripp RAP; 10 May Custer MMM; 10 May Brown SLS
- Common Snipe** Early: 26 Mar Custer MMM; 04 Apr Yankton SVS; 06 Apr Minnehaha RFS
- American Woodcock** All Reports: **12 Mar Yankton SVS**; 13 Apr McCook KB; 18 Apr Lake JSP; 19 May Roberts REM; 19 May Lincoln JSP, RFS
- Wilson's Phalarope** Early: 25 Apr Bennett LCS; 25 Apr Sanborn RGR; 29 Apr Hamlin (2) BKH; 05 May Union (20) DS
- Red-necked Phalarope** Early: 13 May Brown DAT; 20 May Miner JSP; 23 May Butte RAS ... Late: 30 May Union DS; 27 May Lake JSP; 26 May Custer MMM
- Franklin's Gull** Early: 25 Mar Turner (7) LRL; 26 Mar Minnehaha RFS; 27 Mar Brown JCS; 04 Apr Yankton SVS; 04 Apr Charles Mix LAS; 26 Apr Bennett LCS
- Bonaparte's Gull** Early: **02 Apr Roberts BKH; 02 Apr Charles Mix RM; 05 Apr Kingsbury JSP; 05 Apr Yankton DS** ... Late: 27 May Lake JSP; 27 May Day DRS; 10 May Yankton SVS
- Ring-billed Gull** Early: 03 Mar Yankton SVS; 07 Mar Charles Mix LAS; 20 Mar Brown SLS; 20 Mar Meade (15) REP
- California Gull** All Reports: **19 May Stanley JSP, RFS**; 24 May Day JSP
- Herring Gull** Early: 08 Mar Hughes JSP; 08 Mar Charles Mix RM; 22 Mar Bon Homme SVS; 23 Mar Minnehaha RFS ... Late: **19 May Kingsbury JSP, RFS**; 26 Apr Minnehaha RFS; 17 Apr Brookings (3) KB; 30 Mar Charles Mix LAS
- Glaucous Gull** Only Report: **12 Apr Lake (1 imm.) JSP**
- Caspian Tern** All Reports: **20 Apr Hughes DB; 01 May Beadle (2) JCS**; 26 May Clay SVS; 27 May Yankton SVS; 26 May Big Bend RBA; 27 May Charles Mix (11) LAS, RM
- Common Tern** Early: 17 Apr Brookings (10) KB; 22 Apr Charles Mix LAS; 04 May Minnehaha TJ; 08 May Butte (3) RAS ... Late: 22 May Day DRS; 20 May Yankton SVS; 19 May Stanley JSP, RFS
- Forster's Tern** Early: 18 Apr Minnehaha RFS; 19 Apr Kingsbury JSP; 21 Apr Hamlin BKH; 25 Apr Bennett LCS; 29 Apr Yankton SVS
- Least Tern** All Reports: 17 May Yankton SVS; 31 May Union (2) JSP
- Black Tern** Early: 07 May Day DRS; 07 May Beadle (3) BKH; 08 May Brown DAT; 08 May Lake JSP; 08 May Yankton LAS; 10 May Bennett (7) TJ
- Mourning Dove** Early: 23 Mar Pennington TBW; 23 Mar Minnehaha RFS; 26 Mar Charles Mix LAS; 26 Mar Yankton SVS
- Black-billed Cuckoo** All Reports: 30 May Roberts BKH; 31 May Minnehaha RFS; 31 May Lincoln JSP
- Barn Owl** Only Report: 25 May Todd, Ricky D. Olson
- Snowy Owl** All Reports: 16 Apr Brown SLS; 29 Mar Brown MKZ; 15 Mar Hutchinson LAS
- Burrowing Owl** All Reports: **28 Mar Bennett LCS**; 17 Apr and 10 May (21) Custer MMM; 10 May Tripp RAP; 10 May Bennett (4) TJ
- Long-eared Owl** Only Report: Lake *fide* JSP

Short-eared Owl All Reports: 09 Mar Bennett LCS; 13 Mar Custer and 04 May Tripp MMM; 12 Apr Brookings RK; 18 Apr Dewey (4) REP

Northern Saw-whet Owl All Reports: 13 Apr Meade EEM; 01 Apr Meade REP; 22 Mar Pennington MMM

Common Nighthawk Early: 18 May Lake KB; 20 May Roberts REM; 20 May Day DRS; 22 May Yankton SVS; 26 May Pennington TJ

Common Poorwill All Reports: 10 May Tripp RAP; 16 May Meade REP; 30 May Custer KH

Whip-poor-will All Reports: 10 May Yankton *vide* SVS; 16 May Charles Mix LAS; 19 May Lincoln JSP, RFS; 30 May Minnehaha RFS

Chimney Swift Early: 27 Apr Yankton SVS; 02 May Brown DAT; 06 May Lake JSP; 06 May Minnehaha RFS; 10 May Tripp RAP

White-throated Swift All Reports: 11 May Meade EEM, REP; 24 May Pennington (7) TJ

Ruby-throated Hummingbird Early: 12 May Brown JCS; 17 May Brookings RGR; 19 May Yankton SVS

Belted Kingfisher Early: 27 Mar Minnehaha RFS; 27 Mar Charles Mix LAS; 01 Apr Lake KB, JSP; 03 Apr Butte RAS

Red-headed Woodpecker Early: 07 May Turner LRL; 07 May Yankton SVS; 08 May Charles Mix LAS; 10 May Tripp RAP

Yellow-bellied Sapsucker All Reports: 20 Apr Minnehaha RFS; 19 May Lincoln JSP, RFS; 20 May Roberts REM; 24 May Roberts JSP

Red-naped Sapsucker Only Report: 13 May Lawrence (3) VDF

Three-toed Woodpecker Only Report: 06 Mar Custer JSP

Black-backed Woodpecker Only Report: 06 Mar Custer JSP

Pileated Woodpecker All Reports: 16 May and 28 May Roberts REM, BKH; 24 May Roberts JSP

Olive-sided Flycatcher Early: **06 May Brown JCS**; 18 May Meade REP; 20 May Codington RJB ... Late: 29 May Kingsbury RGR; 25 May Minnehaha RFS; 24 May Marshall JSP

Eastern Wood-Pewee Early: 17 May Union TJ; 19 May Turner LRL; 21 May Clay SVS

Yellow-bellied Flycatcher All Reports: 20 May Codington RJB; 25 May and 30 May Minnehaha RFS; 26 May and 30 May Lake JSP; 26 May Clay (1 banded) DS

Alder Flycatcher Only Report: **30-31 May Clay DS**

Willow Flycatcher All Reports: 22 May Butte RAS; 22 May Hughes DB; 31 May Minnehaha RFS

Least Flycatcher Early: 07 May Brown DAT; 07 May Lake JSP; 09 May Hughes DB; 09 May Clay DS; 09 May Union SVS; 10 May Tripp RAP

Dusky Flycatcher Only Report: 28 May Pennington TJ

Cordilleran Flycatcher Only Report: 28 May Pennington TJ

Eastern Phoebe Early: **26 Mar Minnehaha JCS**; 04 Apr Roberts BKH; 04 Apr Bon Homme SVS; 10 May Tripp RAP

Say's Phoebe All Reports: 18 Apr Meade REP; 20 Apr Jackson DAT; 30 Apr Custer MMM; 03 May Lawrence RAS, VDF; 08 May Butte RAS

Great Crested Flycatcher Early: 09 May Gregory LAS; 10 May Custer MMM; 19 May Lincoln JSP, RFS; 19 May Clay DS

Western Kingbird Early: 29 Apr Hughes EDS; 05 May Clay DS; 06 May Brown DAT, JCS; 06 May Beadle (2) BKH; 06 May Brule LAS; 07 May Bennett LCS

Eastern Kingbird Early: 03 May Charles Mix RM; 06 May Meade REP; 07 May Bennett LCS; 07 May Yankton SVS; 07 May Clay DS; 09 May Brookings KB

Purple Martin Early: 24 Apr Charles Mix RM; 27 Apr Brookings RK; 28 Apr Day DRS

Tree Swallow Early: **01 Apr Yankton SVS; 04 Apr Charles Mix LAS**; 17 Apr Minnehaha RFS; 20 Apr Tripp RAP

Violet-green Swallow All Reports: 03 May Custer CMW; 10 May Meade REP; 10 May Lawrence (9) VDF; 11 May Butte RAS

Northern Rough-winged Swallow Early: 19 Apr Minnehaha RFS; 22 Apr Butte RAS; 29 Apr Yankton SVS

Bank Swallow Early: 28 Apr Brown JCS; 03 May Lake JSP; 03 May Clay SVS; 10 May Meade REP; 10 May Custer CMW; 10 May Tripp RAP

Cliff Swallow Early: 05 May Brookings (10) KB; 06 May Beadle (6) BKH; 07 May Day DRS; 10 May Meade EEM, REP; 10 May Lawrence (50) VDF; 17 May Charles Mix LAS

Barn Swallow Early: 15 Apr Yankton SVS; 17 Apr Meade REP; 20 Apr Minnehaha RFS

Gray Jay All Reports: 01 Mar Pennington TBW; 10 May Lawrence VDF; all season Custer CMW

Pinyon Jay Only Report: 19 May Meade REP

Red-breasted Nuthatch Late: 19 May Kingsbury JSP, RFS; 18 May Day (banded) DRS; 08 May Brown DAT; 04 May Charles Mix RM

Pygmy Nuthatch Only Report: 06 Mar Custer, Custer County JSP

Brown Creeper Late: 14 May Meade REP; 01 May Lake JSP; 24 Apr Hughes DB

Rock Wren All Reports: **20 Apr Jackson DAT; 07 May Clay (1 banded) DS**; 07 May Custer MMM; **16 May Union County State Park, Union County DS**

House Wren Early: 25 Apr Charles Mix RM; 01 May Aurora LAS; 07 May Meade REP; 07 May Lake JSP; 07 May Minnehaha RFS; 07 May Yankton SVS

Winter Wren Only Report: 03 May Lake JSP

Sedge Wren Early: 10 May Bennett TJ; 13 May Turner SVS; 16 May Brookings KB; 17 May Union REM

Marsh Wren Early: 05 Mar Fall River (probably overwintered) JSP; 01 May Bennett LCS; 06 May Brookings KIE; 27 May Charles Mix LAS

Golden-crowned Kinglet All Reports: 02 Apr Brown DAT; 17 Apr Kingsbury RGR; 19 Apr Lake JSP; 20 Apr Minnehaha RFS

Ruby-crowned Kinglet Early: **30 Mar Roberts BKH**; 02 Apr Brown DAT; 05 Apr Yankton DS; 04 May Tripp MMM ... Late: **30 May Lake JSP; 27 May Clay DS**; 16 May Roberts REM

Blue-gray Gnatcatcher All Reports: 03 May Lincoln (2) DS; 07 May Codington RJB; 07 May Clay DS; 22 May Minnehaha RFS

Eastern Bluebird Early: 12 Mar Yankton SVS; 15 Mar Minnehaha RFS; 20 Mar Day DRS; 28 Mar Meade REP

Mountain Bluebird Early: 08 Mar Meade (13) REP; 11 Mar Pennington TBW; 12 Mar Custer KH; **08 Apr Deuel fide BKH**; 08 Apr Day JCS

Townsend's Solitaire reported 23 Apr Tripp (2) LAS; 26 Mar Minnehaha RBA; 05 Mar Hughes DAT

Veery Early: **02 May Brookings KIE**; 13 May Brown DAT; 20 May Roberts REM; 22 May Meade REP

- Gray-cheeked Thrush** Early: **02 May Brookings KIE**; 03 May Minnehaha RFS; 09 May Brown DAT; 15 May Hughes DB; 15 May Clay DS; 15 May Union SVS ... Late: 25 May Brookings BH
- Swainson's Thrush** Early: 01 May Minnehaha RFS; 02 May Clay DS; 03 May Lake JSP; 04 May Tripp MMM
- Hermit Thrush** Early: 21 Apr Clay DS; 24 Apr Brown JCS, JSP; 26 Apr Minnehaha KB, RFS ... Late: 09 May Brookings KIE; 04 May Lake RGR; 03 May Minnehaha RFS; 30 Apr Clay DS
- Wood Thrush** Early: 06 May Brown JCS; 16 May Codington JCS; 16 May Lincoln REM; 28 May Yankton SVS
- Gray Catbird** Early: **18 Apr Charles Mix LAS**; 10 May Lake JSP; 10 May Yankton SVS; 17 May Butte RAS
- Brown Thrasher** Early: 22 Apr Yankton SVS; 23 Apr Clay DS; 23 Apr Charles Mix RM; 26 Apr Minnehaha RFS; 05 May Butte RAS
- American Pipit** All Reports: 10 Apr Minnehaha RFS; 12 Apr Clay DS; 02 May Clay SVS; 03 May Lawrence RAS
- Sprague's Pipit** All Reports: 24 Apr Meade REP; 11-17 May (1) and 22 May (2) Custer MMM
- Bohemian Waxwing** All Reports: 16 Mar Meade REP; 05 Mar Jackson JSP
- Northern Shrike** All Reports: 28 Mar Butte RAS; 20 Mar Meade REP; 05 Mar Hughes DAT
- Loggerhead Shrike** Early: 01 Apr Faulk MMM; 04 Apr Yankton SVS; 22 Apr Brookings RK; 24 Apr Meade REP
- Bell's Vireo** All Reports: 20 May Bennett LCS; 21 May Hughes DB; 31 May Minnehaha RFS
- Solitary Vireo** Early: 04 May Minnehaha KB; 08 May Lake JSP; 10 May Day DRS; 15 May Meade REP ... Late: 29 May Kingsbury RGR; 26 May Minnehaha RFS; 20 May Roberts REM
- Yellow-throated Vireo** Early: 16 May Lincoln REM, BKH; 17 May Union REM; 20 May Roberts REM
- Warbling Vireo** Early: 07 May Bon Homme SVS; 08 May Charles Mix LAS; 10 May Lake JSP; 16 May Meade REP
- Philadelphia Vireo** Early: 20 May Roberts REM; 20 May Brookings KB; 25 May Minnehaha RFS ... Late: **31 May Lincoln JSP**; 30 May Clay DS; 27 May Minnehaha RFS
- Red-eyed Vireo** Early: **03 May Lawrence VDF**; 16 May Meade REP; 17 May Union TJ, REM; 18 May Lake KB
- Blue-winged Warbler** All Reports: **19 May and 31 May Newton Hills State Park, Lincoln County RFS, JSP**; **27 May Elmwood Park, Sioux Falls, Minnehaha County RFS**
- Golden-winged Warbler** Early: **10 May Kingsbury RGR**; 17 May Union TJ, BKH, REM; 20 May Roberts BKH, REM ... Late: **30 May Minnehaha RFS**; **23 May Roberts BKH**; 22 May Lake JSP
- Tennessee Warbler** Early: 07 May Clay DS; 08 May Brown JCS; 16 May Lake JSP; 23 May Meade REP
- Orange-crowned Warbler** Early: 19 Apr Edmunds JDW; 21 Apr Brown DAT; 25 Apr Hughes DB; 26 Apr Tripp LAS ... Late: **31 May Brown JCS**; 29 May Minnehaha RFS; 24 May Kingsbury RGR; 21 May Union SVS; 10 May Tripp RAP; 10 May Lawrence RAS

- Nashville Warbler** Early: 12 May Lake JSP; 12 May Minnehaha RFS; 18 May Brookings RGR; 18 May Union RM, LAS ... Late: **31 May Brown JCS; 29 May Kingsbury RGR; 29 May Lake KB; 21 May Clay DS**
- Northern Parula** All Reports: 18 May Union LAS, RM; 21 May Hughes DB; 21 May Lake JSP; 22 May and 29 May Minnehaha RFS
- Yellow Warbler** Early: 06 May Hughes DB; 07 May Sanborn RGR; 07 May Clay DS; 07 May Yankton SVS; 09 May Meade REP
- Chestnut-sided Warbler** Early: 16 May Roberts BKH; 16 May Clay DS; 18 May Union RM, LAS, TJ ... Late: **30 May Minnehaha RFS; 30 May Lake JSP; 29 May Kingsbury RGR; 22 May Yankton SVS; 22 May Hughes DB**
- Magnolia Warbler** Early: 16 May Roberts BKH; 16 May Gregory LAS; 17 May Union TJ ... Late: 30 May Clay DS; 30 May Minnehaha RFS; 30 May Lake JSP
- Cape May Warbler** All Reports: 20 May Roberts REM, BKH; 22 May Lake JSP
- Black-throated Blue Warbler** All Reports: **22 May Butte RAS; 23 May Brown DAT**
- Yellow-rumped Warbler** Early: **26 Mar Minnehaha JCS; 17 Apr Kingsbury RGR; 18 Apr Yankton SVS; 28 Apr Pennington TBW ... Late: 31 May Brown JCS; 29 May Clay DS; 29 May Lake JSP**
- Black-throated Green Warbler** Early: 19 May Hughes DB; 21 May Lake JSP; 22 May Minnehaha RFS ... Late: **30 May Minnehaha KB, RFS; 28 May Lake JSP; 26 May Clay DS**
- Blackburnian Warbler** Early: 17 May Union TJ; 18 May Brookings RGR; 18 May Lake KB; **21 May Meade REP ... Late: 31 May Yankton SVS; 30 May Clay DS; 30 May Minnehaha RFS**
- Palm Warbler** Early: 26 Apr Minnehaha RFS; 28 Apr Clay DS; 01 May Beadle RGR; 01 May Lake JSP; 10 May Bennett TJ ... Late: 17 May Brookings RGR; 14 May Lake JSP; 13 May Hughes DB
- Bay-breasted Warbler** Early: 17 May Brookings RGR; 23 May Lake JSP; 26 May Minnehaha RFS; ... Late: 30 May Lake JSP; **29 May Hughes DB; 25 May Brookings BH**
- Blackpoll Warbler** Early: 06 May Hughes DB; 07 May Clay DS; 08 May Lake JSP; 12 May Meade REP ... Late: 30 May Minnehaha RFS, MKZ; 30 May Lake JSP; 29 May Kingsbury RGR; 28 May Hughes EDS; 25 May Meade REP
- Cerulean Warbler** Only Report: 10 May Lincoln RFS
- Black-and-white Warbler** Early: 04 May Lincoln TJ; 05 May Lake JSP; 06 May Minnehaha RFS; 09 May Meade REP; 15 May Union SVS ... Late: 30 May Minnehaha RFS; 29 May Kingsbury RGR; 29 May Lake JSP; 18 May Union LAS, RM
- American Redstart** Early: 12 May Meade REP, EEM; 15 May Brown DAT; 17 May Brookings RGR, KIE; 19 May Hughes DB; 19 May Clay DS
- Prothonotary Warbler** All Reports: **23 May Roberts BKH; 23 and 28 May Lake (1 male) JSP; 29 May Lake (1 female) JSP**
- Ovenbird** Early: **30 Apr Brookings KIE; 03 May Lake JSP; 07 May Brown DAT; 15 May Union SVS; 16 May Meade REP**
- Northern Waterthrush** Early: 03 May Kingsbury JSP; 03 May Minnehaha RFS; 05 May Clay DS ... Late: **29 May Kingsbury RGR; 29 May Lake JSP; 28 May Minnehaha RFS; 24 May Pennington TBW; 15 May Union SVS; 15 May Hughes DB**

- Connecticut Warbler** Early: 19 May Brown DAT; 24 May Roberts JSP; 24 May Kingsbury RGR ... Late: 31 May Brown JCS; 30 May Lake JSP; 28 May Minnehaha RFS
- Mourning Warbler** Early: 18 May Brown DAT, JCS; 19 May Lake JSP, RFS; 19 May Hughes DB ... Late: 30 May Lake JSP; 29 May Charles Mix RM; 29 May Minnehaha RFS; 29 May Kingsbury RGR; 29 May Brown DAT
- MacGillivray's Warbler** All Reports: 19 May Meade REP; **24 May Brown (banded) DAT**; 25 May Pennington TJ
- Common Yellowthroat** Early: 05 May Lake JSP; 07 May Brown DAT; 07 May Minnehaha RFS; 07 May Clay DS; 09 May Meade REP
- Wilson's Warbler** Early: 10 May Lawrence VDF; 10 May Kingsbury RGR; 11 May Brown JCS; 11 May Charles Mix LAS ... Late: **30 May Minnehaha RFS; 29 May Kingsbury RGR; 29 May Lake JSP**; 22 May Butte RAS; 19 May Union DS
- Canada Warbler** Early: 22 May Roberts BKH; 22 May Lake JSP; 24 May Codington JCS; 24 May Kingsbury RGR; ... Late: 30 May Clay DS; 30 May Minnehaha RFS; 30 May Lake JSP
- Yellow-breasted Chat** Early: **06 May Hughes DB**; 18 May Brown DAT; 18 May Bennett LCS
- Scarlet Tanager** All Reports: 24 May Brookings BH; 25 May Lake JSP; 28 May Brown JCS; 29 May Kingsbury RGR; 30 May Gregory LAS; 30 May Roberts BKH
- Western Tanager** All Reports: 21 May Pennington TBW; 22 May Meade REP; 24 May Custer CMW
- Rose-breasted Grosbeak** Early: 05 May Charles Mix LAS; 07 May Hughes EDS; 09 May Clay DS; 10 May Brown SLS; 10 May Roberts BKH; 10 May Lake JSP
- Black-headed Grosbeak** Early: 06 May Custer CMW; 08 May Hughes EDS; 10 May Bennett TJ; 10 May Tripp RAP; 21 May Brown JCS
- Blue Grosbeak** All Reports: 18 May Bennett LCS; 21 May Clay SVS; 24 May Pennington MMM; 30 May Charles Mix RM; 30 May Gregory LAS
- Lazuli Bunting** All Reports: **20 Apr Hughes EDS**; 11 May Lawrence VDF; 12 May Butte RAS; 22 May Meade REP
- Indigo Bunting** Early: 17 May Union REM; 20 May Roberts REM; 21 May Hughes EDS; 21 May Turner LRL; 22 May Meade REP
- Dickcissel** Early: 10 May Brown SLS; 10 May Custer CMW; 17 May Union REM
- Eastern Towhee** All Reports: 08 May Lake JSP; 10 May Yankton SVS; 14 May Minnehaha RFS; 16 May Lincoln REM
- Spotted Towhee** Early: 18 Apr Yankton SVS; 25 Apr Charles Mix LAS; 03 May Butte RAS; 03 May Meade EEM; 07 May Lake JSP
- American Tree Sparrow** Late: **10 May Brown SLS**; 25 Apr Clay DS; 20 Apr Butte RAS
- Chipping Sparrow** Early: **26 Mar Minnehaha JCS; 01 Apr Pennington TBW**; 04 Apr Charles Mix RM
- Clay-colored Sparrow** Early: 25 Apr Clay DS; 01 May Butte RAS; 03 May Lawrence VDF; 05 May Lake JSP
- Field Sparrow** Early: 15 Apr Charles Mix LAS; 18 Apr Yankton SVS; 20 Apr Minnehaha RFS; 03 May Lawrence VDF
- Vesper Sparrow** Early: 12 Apr Lake JSP; 12 Apr Minnehaha RFS; 12 Apr Clay DS; 21 Apr Custer MMM
- Lark Sparrow** Early: 03 May Clay SVS; 04 May Meade REP; 04 May Tripp RAP

Lark Bunting Early: 07 May Custer MMM; 10 May Lawrence RAS; 10 May Tripp RAP; 16 May Charles Mix RM; 16 May Gregory LAS

Savannah Sparrow Early: 10 Apr Lake JSP; 18 Apr Yankton SVS; 19 Apr Custer MMM

Baird's Sparrow Only Report: 10 May Custer MMM

Grasshopper Sparrow Early: 23 Apr Clay DS; 04 May Tripp RAP; 06 May Roberts DRS; 06 May Brule LAS

LeConte's Sparrow Only Reports: 26 Apr Minnehaha RFS; 04 May Brown JCS; **04 May Tripp RAP**; 15 May Brown REM; 16 May Lincoln JDW; 24 May Day JSP

Nelson's Sharp-tailed Sparrow Only Report: **30 May Sanborn RGR**

Fox Sparrow Early: **16 Mar Clay RBA**; 26 Mar Yankton SVS; 28 Mar Deuel BKH ... Late: 26 Apr Brookings JSP; 18 Apr Gregory LAS; 12 Apr Clay DS

Song Sparrow Early: 05 Mar Lawrence SVS; 05 Mar Fall River JSP; 15 Mar Lake KB; 26 Mar Yankton SVS

Lincoln's Sparrow Early: **27 Mar Brown JCS**; **28 Mar Pennington TBW**; 26 Apr Butte RAS; 01 May Hughes DB ... Late: **26 May Minnehaha RFS**; 19 May Lake JSP, RFS; 15 May Union SVS; 15 May Brown REM; 10 May Tripp RAP

Swamp Sparrow Early: **19 Apr Butte RAS**; 25 Apr Lincoln LAS; 26 Apr Sanborn RGR

White-throated Sparrow Early: **26 Mar Minnehaha JCS**; 26 Apr Day JSP; 26 Apr Charles Mix RM ... Late: **27 May Lake JSP**; **26 May Brown JCS**; 22 May Yankton SVS

White-crowned Sparrow Early: 14 Apr Charles Mix RM; 21 Apr Lake RK; 25 Apr Meade EEM ... Late: **28 May Brown JCS**; **26 May Union SVS**; **24 May Minnehaha MKZ**; **23 May Butte RAS**

Harris' Sparrow Early: 08 Apr Yankton SVS; 21 Apr Lake RK; 27 Apr Minnehaha RFS; 02 May Butte RAS ... Late: **31 May Brown JCS**; **28 May Lake JSP**; **25 May Minnehaha MKZ**; 19 May Hughes DB; 10 May Tripp RAP

Dark-eyed Junco Late: **21 May Brookings JCS**; 08 May Lake JSP; 06 May Hughes EDS

Lapland Longspur Late: 12 Apr Minnehaha (10,000) RFS; 11 Apr Union (100+) DS, SVS; 27 Mar Deuel BKH

Chestnut-collared Longspur Early: **20 Mar Deuel BKH**; 11 Apr Union (3) DS; 24 Apr Meade REP

Snow Bunting All Reports: **12 Apr Charles Mix RM**; **09 Apr Day DRS**; 21 Mar Deuel (2000) BKH; 15 Mar Kingsbury JSP

Bobolink Early: 07 May Yankton SVS; 09 May Deuel BKH; 10 May Brown SLS; 10 May Lake JSP; 10 May Bennett TJ; 10 May Tripp RAP; 10 May Charles Mix LAS, RM

Eastern Meadowlark Only Report: 10 May Bennett (24) TJ

Yellow-headed Blackbird Early: 30 Mar Beadle CMW; 02 Apr Brown JCS; 02 Apr Deuel BKH; 02 Apr Lincoln MKZ

Rusty Blackbird Only Report: 23 Mar and 18 Apr Minnehaha RFS

Brewer's Blackbird Early: **04 Mar Bennett SVS**; 22 Mar Deuel BKH; 17 Apr Pennington TBW

Common Grackle Early: 08 Mar Charles Mix RM; 13 Mar Yankton SVS; 15 Mar Douglas KB; 01 Apr Butte RAS

Brown-headed Cowbird Early: **01 Mar Charles Mix LAS**; 23 Mar Minnehaha RFS; 05 Apr Lake JSP; 04 May Meade EEM

Orchard Oriole Early: 07 May Hughes EDS; 09 May Gregory LAS; 10 May Tripp RAP; 19 May Lake JSP, RFS
Baltimore Oriole Early: 23 Apr Charles Mix RM; 04 May Clay DS; 07 May Yankton SVS; 09 May Minnehaha BKH
Bullock's Oriole All Reports: 10 May Butte RAS; 10 May Lawrence VDF; 12 May Meade REP; 31 May Meade EEM; 31 May Pennington MMM
Gray-crowned Rosy Finch Only Report: **16 Apr Custer (last seen) KH**
Purple Finch All Reports: 26 Apr Day JSP; 26 Mar Pennington TBW; 20 Mar Lake KB; 13 Mar Day DRS
Cassin's Finch All Reports: 30 May Custer CMW; 25 May Lawrence TJ; 12 May Meade REP
Red Crossbill Late: 30 Apr Yankton SVS; 09 Apr Day DRS; 07 Apr Charles Mix RM
Common Redpoll All Reports: 26 Mar Brown DAT; 24 Mar Day DRS; 21 Mar Butte RAS; 06 Mar Custer JSP

Reports Requiring Acceptance By The Rare Bird Records Committee

Yellow-crowned Night-Heron 04 May west of Wall Lake, Minnehaha County
Mark & Jessica Mahnke
Northern Goshawk 15 May Brookings KIE
Broad-winged Hawk 06 Mar Butte RAS
Swainson's Hawk 06 Mar Charles Mix RM
Rough-legged Hawk all season Meade EEM
Black-necked Stilt 02 May Brown SLS
Whimbrel 19 May Hand JSP, RFS
Ruff 06-10 May Baltic, Minnehaha County RFS, JSP
Lesser Black-backed Gull 05 Apr Lake Herman, Lake County (1 ad.) JSP
Black Tern 29 Mar Douglas RM; 04 Apr Brown JCS
White-winged Dove 28 May St. Onge, Lawrence County (possible 2nd State Record) RAS
Great Gray Owl 18-19 Mar Pine Lake Hills, Sioux Falls, Minnehaha County
RFS, Joe Staab
Gray-cheeked Thrush 26 Mar Minnehaha JCS
Swainson's Thrush 26 Mar Minnehaha JCS; 17 Apr Minnehaha MKZ
Yellow-throated Vireo 22 May Fort Meade Recreation Area, Meade County REP
Yellow Warbler 26 Mar Bennett LCS '
Worm-eating Warbler 26-29 May Clay (banded) and 30-31 May Clay (2nd bird also banded) DS
Louisiana Waterthrush 16 May Union County State Park, Union County DS
Kentucky Warbler 27-29 May Elmwood Park, Sioux Falls, Minnehaha RFS, JSP, DS
American Tree Sparrow all season Custer CMW
Rusty Blackbird 30 May Charles Mix RM
Great-tailed Grackle 19 Apr Miner JSP; 19 Apr Minnehaha RFS; 9-16 May Wagner, Gregory County (possible breeding) RM, LAS, DAT; also reported from Lake Andes NWR on 4 different occasions LAS

Corrections/Additions from Past Reports

Red-necked Grebe reported 13 Jul 1996 was in section 09 (not section 13).
Ruddy Duck reported 20 Nov 1996 was observed 10 Nov.

Species Expected But Not Reported

Least Bittern, Yellow-billed Cuckoo, Barred Owl (3), Western Wood-Pewee, Clark's Nutcracker, Canyon Wren, Northern Mockingbird, Sage Thrasher (3), Pine Warbler (2), Brewer's Sparrow (3), McCown's Longspur, Smith's Longspur (3), White-winged Crossbill (3)

Migration Calendar

This table lists, for selected species, the earliest reported date (during the season) in each of six regions (southeast, northeast, lower river, upper river, southwest, and northwest) across the state as well as the species (row) and regional (column) averages for the current year. Trend indicates the number of days earlier (-) or later (+) than the average of the previous 2 years.

Species	SE	NE	LR	UR	SW	NW	Avg.	Trend
Sandhill Crane	4/23	3/26	3/16	4/20	3/28	4/18	06 Apr	+ 8
Blue-winged Teal	3/27	3/30	3/15		4/10	3/23	27 Mar	- 6
American White Pelican	4/05	4/01	3/24	4/19	3/27	4/17	05 Apr	- 3
Common Loon	4/12	4/21	3/27	4/19	5/08	4/12	16 Apr	+ 1
Ruby-crowned Kinglet	4/12	3/30	4/05	4/24	5/04	5/13	19 Apr	+ 3
Yellow-rumped Warbler	3/26	4/24	4/18	4/24	4/28	5/03	20 Apr	- 5
Barn Swallow	4/20	5/03	4/15		5/02	4/17	23 Apr	- 1
Brown Thrasher	4/26	5/06	4/22	5/09	5/07	5/05	02 May	- 3
Western Kingbird	5/06	5/06	5/05	4/29	5/07	5/08	05 May	- 3
Bobolink	5/10	5/09	5/07		5/10	5/11	09 May	- 3
Common Nighthawk	5/18	5/20	5/22		5/26		21 May	+ 5
Avg.	4/19	4/21	4/12	4/24	4/27	4/24		
Trend	- 1	0	- 8	- 7	+ 5	- 4		

Contributing Observers

RBA	Rare Bird Alert	JSP	Jeffrey S. Palmer
DB	Doug Backlund	RAP	Richard A. Peterson
KB	Kristel Bakker	REP	Randy E. Podoll
RJB	Ronald J. Bauer	RGR	Robert G. Rogers
VDF	Vic & Donna Fondy	SLS	Sand Lake NWR Staff
KH	Kevin Hachmeister	RFS	Robb F. Schenck
BKH	Bruce K. Harris	RAS	Ralph & Alice Shaykett
BH	Bill Huser	SFB	Sioux Falls Bird Club
TJ	Todd Jensen	DRS	Dennis R. Skadsen
KIE	Kieckhefer Family	JCS	Jerry C. Stanford
RK	Rich Kostecke	EDS	Eileen Dowd Stukel
LCS	Lacreek NWR Staff	DS	David Swanson
LAS	Lake Andes NWR Staff	DAT	Dan A. Tallman
LRL	Lester R. Lauritzen	SVS	Steve Van Sickle
RM	Ron Mabie	TBW	Tom & Brenda Warren
REM	Ron E. Martin	JDW	J. David Williams
MMM	Michael M. Melius	CMW	Cheryl M. Wormstadt
EEM	Ernest E. Miller	MKZ	Mick Zerr

Published by
SOUTH DAKOTA ORNITHOLOGISTS' UNION
EDITOR: DAN TALLMAN
NSU BOX740
ABERDEEN SD 57401

RETURN POSTAGE GUARANTEED

Nonprofit
organization
US Postage
PAID
Permit 60
Aberdeen SD
57401
BLK RT