

---

# SOUTH DAKOTA

## Ornithologists' Union

---

*Greater Sage Grouse*

*Butte County, SD*

*Photo: Doug Backlund*



---

S O U T H



D A K O T A

B I R D

N O T E S

---

VOL. 59

March 2007

NO. 1

---

*SOUTH DAKOTA BIRD NOTES*, the official publication of the South Dakota Ornithologists' Union (organized 1949), is sent to all members whose dues are paid for the current year. Life members: \$320; Family life members (one subscription to Bird Notes): \$480; sustaining members: \$30; regular membership: \$16; Family membership (one household with one subscription to Bird Notes: \$20; Junior membership (10-16): \$8; Library Subscription: \$20; Single and back copies: Members, \$4; Non-members, \$5. All dues, payments, change of address notices and orders for back copies should be sent to the SDOU Treasurer, Nelda Holden, 1620 Elmwood Drive, Brookings, SD 57006. Manuscripts for publication should be sent to Douglas Chapman, 3108 S. Holly Ave., Sioux Falls, SD, 57105 or e-mailed to SFbirdclub@sio.midco.net. **SDOU website: [www.sdou.org](http://www.sdou.org).**

---

Vol. 59

March 2007

NO. 1

---

## SOUTH DAKOTA ORNITHOLOGISTS' UNION

### Officers 2006 - 2007

President ..... Rosemary Draeger ..... 528 E. Lotta St., Sioux Falls, SD 57105  
Vice-President ... Addison Ball ..... 8462 Deerview Rd., Piedmont, SD 57769  
Secretary ..... David Swanson ..... USD, Vermillion, SD 57069  
Treasurer ..... Nelda Holden ..... 1620 Elmwood Drive, Brookings, SD 57006  
Editor ..... Douglas Chapman\* ..... 3108 S. Holly Ave., Sioux Falls, SD 57105  
Librarian ..... Jeffrey S. Palmer ..... DSU, Madison, SD 57042  
\*Douglas Chapman assumed duties of office from Eric Liknes in October, 2007.

---

#### Elected Directors

For Term expiring 2007: Marie Curtin, Custer; Ron Martin, Sawyer, ND; Rosemary Draeger, Sioux Falls; and Duane Weber, Custer  
For Term expiring 2008: Addison Ball, Piedmont; Jennifer Fowler, Rapid City; Kent Jensen, Brookings; Ron Mabie, Pickstown; and Erika Tallman, Northfield, MN.  
For Term expiring 2009: Anna Ball, Piedmont; Linda Johnson, Sioux Falls; Eric Liknes, Aberdeen; Ricky Olson, Ft. Pierre; and Doug Backlund, Pierre.

#### Past President Directors

Jocelyn L. Baker, L. M. Baylor, Gilbert Blankespoor, Ken Graupmann, Byron Harrell, Bruce Harris, Nelda Holden, Todd M. Jensen, Jeffrey S. Palmer, Rex Riis, Dennis Skadsen, Robb Schenck, David Swanson, Dan Tallman, J. David Williams.

---

#### STANDING COMMITTEES OF SDOU:

**Scholarship and Grants:** Jocelyn L. Baker (chair), Nelda Holden, Galen Steffen  
**Nathaniel R. Whitney, Jr. Memorial Research Grant:** Todd M. Jensen (chair), Linda Johnson, Duane Weber  
**Rare Birds:** David Swanson (chair), Jeffrey S. Palmer, Ricky D. Olson, Todd M. Jensen, J. David Williams

---

#### BIRD NOTES STAFF:

**PUBLICATIONS COMMITTEE:** Douglas E. Chapman, Sioux Falls; Jocelyn L. Baker, Rapid City; Linda Johnson, Sioux Falls; Rosemary Draeger, Sioux Falls

Editor ..... Douglas E. Chapman, Sioux Falls  
History Editor ..... L.M. Baylor, Rapid City  
Youth Birding Editor ..... Caity Reiland-Smith, Sioux Falls  
Seasonal Reports Editor ..... Jeffrey S. Palmer, Madison  
Rare Bird Records Editor ..... David Swanson, Vermillion  
Photography Editor ..... Doug Backlund, Pierre  
Book Review Editor ..... Dan Tallman, Northfield, MN  
Birding Area Editor (Hot Spots Today) ..... Ricky D. Olson, Ft. Pierre

## PRESIDENT'S PAGE

In the last issue, Les Baylor related the story of the launch of *Bird Notes* in 1949 "to fulfill the need for statewide observation of bird life and dissemination of the information thus obtained." Nearly 60 years later, *Bird Notes* is continuing that mission, thanks to all of the contributors to our quarterly over the years. I don't know what the distant future holds for printed journals like *Bird Notes*. With the growth of online internet communications and the rising cost of printing and mailing, it might, down the road, join the ranks of increasing numbers of publications offered only online, but for the foreseeable future we can all enjoy the tactile and visual pleasure of holding it in our hands and perusing it leisurely while comfortably seated in an easy chair in the den. The more time I spend in front of my computer, the more I appreciate that comfortable chair in the den.



Thinking about costs for SDOU raises the very important organizational issue of membership. Over the years, membership has been steady but has slightly declined recently. How can we grow membership? How do people find out about SDOU? The first step is for every one of us current members to invite our non-member birding friends to join! Why join SDOU? Here are a few reasons to add to your own to encourage recruits: to gain new perspectives about birds from other birders around the state and to share a mutual enjoyment of birding; to learn about great birding spots in different areas of the state; to treat oneself to the lively educational opportunities SDOU membership provides through *Bird Notes*, through our semi-annual membership gatherings, through our website and online Seasonal Bird Observation Reporting database, and through rich friendships gained across the state; to join in the effort to build our body of knowledge about bird life in South Dakota; and to help give SDOU a stronger voice in matters of great importance to the long-term protection of birds and bird habitats statewide. A second step might be to find an SDOU member who would like to serve as Membership Chairperson, who would organize our efforts to get the word out that SDOU exists, that annual dues for an individual cost less than four medium lattes, and that the great benefit of membership is simply an enhanced enjoyment of our shared interest in the movement and behavior of birds across our state.

The inside cover of this and every issue of *Bird Notes* gives the treasurer's address for sending dues. And the mailing cover acts as an application/renewal form. Please hand mailing covers to potential members. It will make it easier to join. I challenge each of us to recruit one new member this year. Please let me know if you have additional ideas for attracting new members. Thanks.

See good birds.

*Rosemary Draeger*

# FROM OUR PAST...

...IN SOUTH DAKOTA BIRD NOTES

---

L. M. BAYLOR

**S***outh Dakota Bird Notes*—official publication of the South Dakota Ornithologists' Union—finally appeared as Vol. 1, No. 1, July 1949. Its title page featured H. Wayne Trimm's small black-and-white drawing of a Lark Bunting. The page also carried the list of officers for 1949: Herman F. Chapman, President; Dr. Gerald W. Spawn, Vice President; W. B. Mallory, Secretary; S. H. Rames, Treasurer; E. R. Lamster, Editor-Librarian. Also acknowledged were Executive Members Ruth Haberber, Chas. S. Hills, and J. O. Johnson; and the Chairman, Membership Committee, J. Scott Findley.

Several contributors to the first issue revealed a range of early bird study by members. Arthur R. Lunquist, in a feature article, "The Waubay Lake Colonies of Double-crested Cormorants," reported this colony's known history (as early as 1910), described the nesting activity in detail, and recounted his involvement with banding 1,472 juveniles. From the band recoveries, he determined that the cormorants migrated principally along the Mississippi River and that many of the banded birds returned to South Dakota.

Members privileged to know Herbert Krause remember him as exceptionally knowledgeable in many realms, but always with the attitude of a humble learner. The latter quality radiates from his article, "A Query on the Song of the Slate-colored Junco," in which he claimed, "I am the lowest among the beginners in the study of bird-lore." He then went on to wonder about the spring song of this junco. He described the song in detail and related his experiences with hearing it. Then in typical fashion for Herb, he concluded: "Perhaps this spring ditty is commonly heard here and elsewhere, and like the Junco's white tail-feathers my ignorance is showing."

In a section titled "Bird Notes of Special Interest," Kenneth Krumm, LaCreek Wildlife Refuge manager, indicated that 150 to 200 White Pelicans commonly nested at the refuge, along with a considerable number of Double-crested Cormorants. Krumm also reported a first record of an American Egret (Great Egret today) at the refuge, 25 August — 1 September 1948.

W. B. Mallory shared game warden F. H. Sundling's report of 14 pairs of nesting Wood Ducks along the Big Sioux River between Canton and Hudson, SD, presumably in 1949.

This section also included an item borrowed from *Iowa Bird Life* to the effect that a few Blue Grosbeaks nested east of Pickstown, SD. Perhaps the most remarkable item, borrowed from *The Nebraska Bird Review*, came from a resident of Washing-

*Continued on page 13*

# EDITORIAL

## *THE GREEN GRASS IS NOT ALWAYS GREENER.*

The picture of me you find on this page shows me happily taking in several species of desert birds all at once: species which are found in extremely arid landscapes. There were four Le Conte's Thrashers (one singing), a singing "California" Sage Sparrow (*Amphispiza nevadensis canescens*), endemic to interior California and an interior Cactus Wren. I include a picture of the thrasher. Up the rocky slopes just to the right out of the picture, there were 8-10 Chukar blithely chortling away. The next day we were on the water on an exciting pelagic trip. Yes, indeed, we were in California: the two spots mentioned are Jawbone Canyon and Monterey Bay.



*Photo: Michael Retter*



*Le Conte's Thrasher.  
Jawbone Canyon, Kern  
County, CA. 10/17/2006.*

*Photo: Michael Retter*

While I enjoy birding far away places, I am always struck by how many really varied habitats we have here in South Dakota with an equal variety of birds. From the Lakes Region of the Northeast to the sage steppe of the Southwest, toss in the unique Black Hills and then take a drive through Ft. Pierre National Grasslands on to Newton Hills State Park and you

will find a wide variety of birds. Some of the best are also found in the stark beauty of Harding County habitats, so much like Jawbone Canyon.

Yes, California has great birds, and South America has great birds and Florida and

many more places, too. But we need not be jealous of other locations. Birds found here are as exciting and beautiful as most and much better than some. The "green" grass is NOT always greener elsewhere—sometimes it's bare and brown.

Bird on...

*Doug Chapman*

The Lennox, South Dakota, Breeding Bird Survey  
by Dr. Gilbert Blankespoor

**Introduction**

The North American Breeding Bird Survey, administered by the USGS Patuxent Wildlife Research Center and initiated in 1966, is a massive effort to monitor breeding bird populations in the United States and Canada. Currently, there are approximately 3700 established BBS routes. The roadside-based surveys include the following standardized elements: (1) surveys are conducted in late spring or early summer; (2) stops are made at 0.5 mile intervals along a 25-mile, largely linear route; (3) at each stop, for 3 minutes, all individual birds seen and/or heard are recorded; (4) weather information is recorded during the time of the survey. Results and analyses for the North American Breeding Bird Survey are available to the general public over the internet (Sauer, *et al.* 2006).

In South Dakota, in 2006, there were 61 routes (Fig. 1), of which 36 were surveyed. Laura Hubers, Wildlife Biologist, Waubay National Wildlife Refuge is the State Coordinator. The Lennox route was first surveyed in 1967 and has been surveyed every year since except for the years 1992, 1994, and 1995. The Lennox route begins one mile south of the town of Lennox and then extends due north.

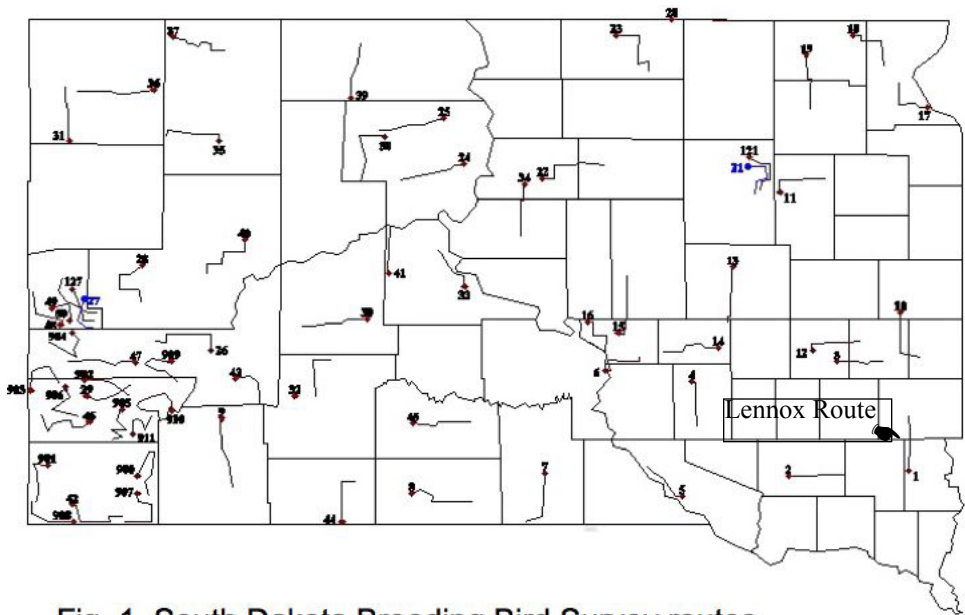


Fig. 1. South Dakota Breeding Bird Survey routes

**Lennox BBS Information**

Land Cover

Most of the area surrounding the Lennox route supports row crops, principally corn and soybeans (Fig. 2). There are scattered examples of wetlands, pastures, and hay fields. The only woodland habitat is provided by the farmsteads which punctuate the landscape.

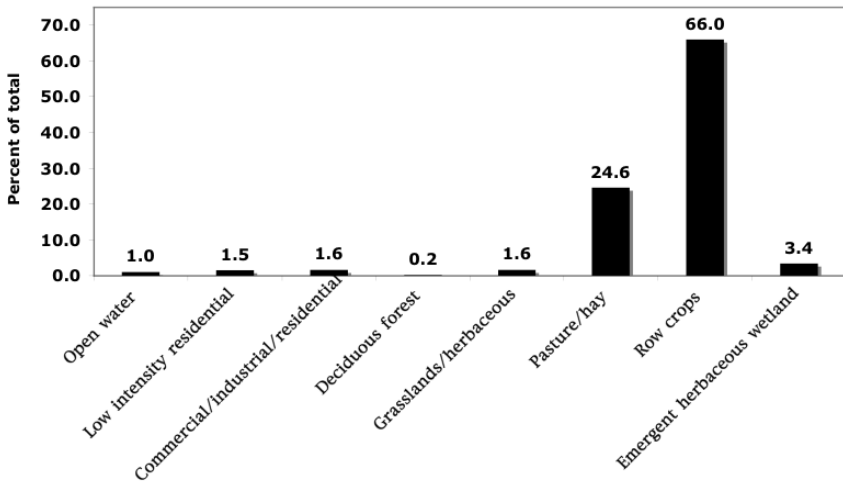


Fig. 2. Land cover values for the Lennox BBS area.

### Species/individual abundance

The cumulative total number of species for the 36 years of surveys was 104 species. The mean number of species recorded per survey was  $48.4 \pm 5.36$  SD species (minimum = 34 species; maximum = 62 species). The number of species increased significantly between 1967 and 2005 (Fig. 3;  $p < .05$ ). The mean number of individuals for the 36 surveys was  $981.9 \pm 114.73$  SD individuals (minimum = 761 individuals; maximum = 1256 individuals). The number of individuals decreased significantly between 1967 and 2005 (Fig. 4;  $p < .05$ )

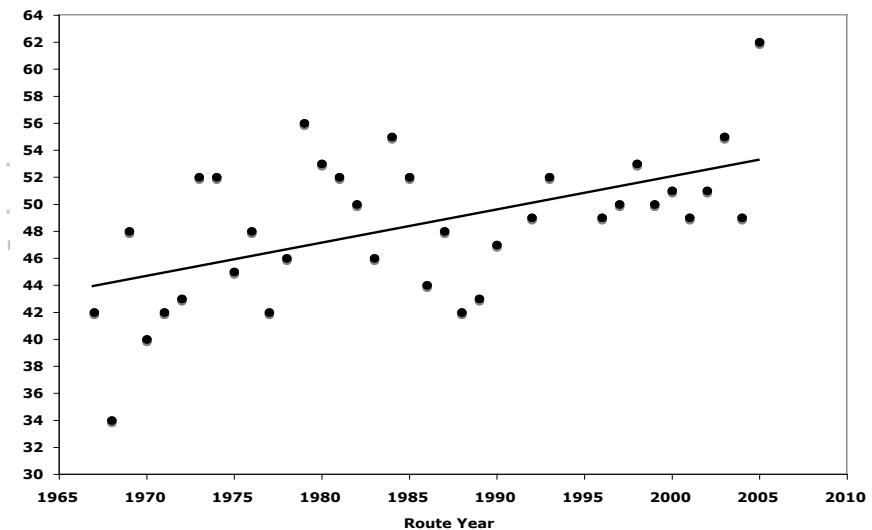


Fig. 3. Number of species, 1967 through 2005.

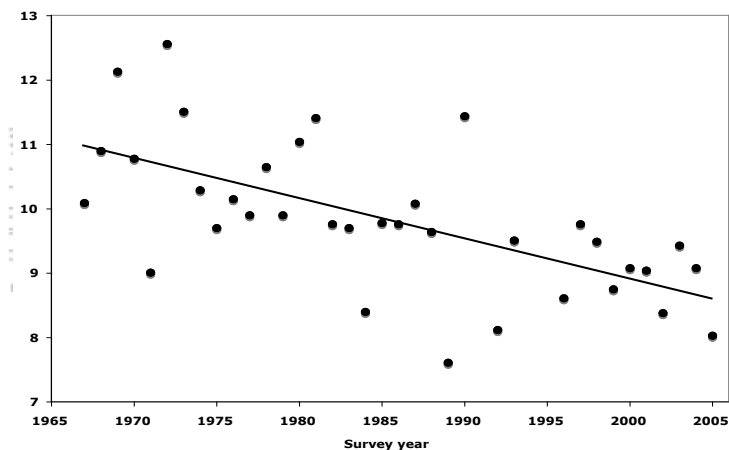


Fig. 4. Number of individuals, 1967 through 2005

The number of individuals/species averaged across the 36 surveys varied from a high of 186.94 individuals to a low of 0.03 individuals. Numbers of individuals for the 15 most abundant species are given in Fig. 5. A number of species were recorded only once (*Canvasback*, *Lesser Scaup*, *Hooded Merganser*, *Double-crested Cormorant*, *Marbled Godwit*, *Ring-billed Gull*, *Great Horned Owl*, *Burrowing Owl*, *Short-eared Owl*, *Hairy Woodpecker*, *Eastern Wood-Pewee*, *White-breasted Nuthatch*, *Eastern Bluebird*, *Clay-colored Sparrow*) or twice (*American Wigeon*, *Great Blue Heron*, *Common Nighthawk*, *Belted Kingfisher*, *Least Flycatcher*, *Eastern Phoebe*, *Red-eyed Vireo*, *Cedar Waxwing*) during the surveys.

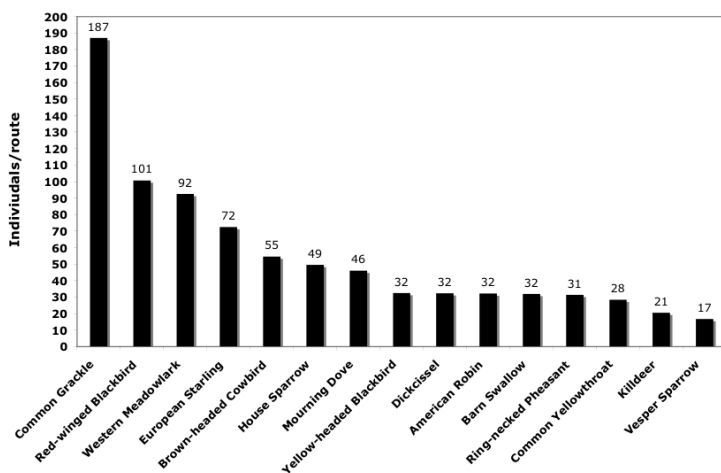


Fig. 5. The 15 most common species on the Lennox BBS.

The BBS has established the following breeding guild categories: (1) grassland; (2) successional and scrub; (3) wetland; (4) woodland; (5) urban. Breeding guild affinities for the Lennox BBS are given in Table 1.



<u>Guild</u>	<u>Number of species</u>
Grassland	20
Successional and scrub	18
Wetland	34
Woodland	18
Urban	14

Table 1. Breeding guild affinities for the species in the Lennox BBS

The essential goal of the North American Breeding Bird Survey is to monitor population size changes in species of North American birds. Since the Lennox BBS has continued now for almost 40 years, the data available should provide a reliable index of what has been happening to breeding bird population size in the restricted area of the survey. Population trends for the Lennox BBS are presented in Table 2.

<u>Increasing trend</u>		<u>Decreasing trend</u>	
Canada Goose	(+)	Northern Pintail	(0)
Wood Duck	(0)	Upland Sandpiper	(-)
Red-tailed Hawk	(+)	Franklin's Gull	(0)
Eastern Kingbird	(-)	Mourning Dove	(-)
American Crow	(+)	Red-headed Woodpecker	(-)
Tree Swallow	(+)	Northern Flicker	(-)
Marsh Wren	(+)	Western Kingbird	(0)
American Robin	(+)	Purple Martin	(0)
Chipping Sparrow	(+)	Barn Swallow	(0)
Song Sparrow	(+)	European Starling	(0)
Baltimore Oriole	(0)	Lark Bunting	(-)
House Finch	(+)	Swamp Sparrow	(+)
American Goldfinch	(0)	Grasshopper Sparrow	(-)
		Western Meadowlark	(-)
		Brown-headed Cowbird	(-)

Table 2. Lennox BBS species with either increasing or decreasing population trends. Region<sup>1</sup> trends (increasing, no trend, decreasing) for these same species are indicated with the use of (+), (0), and (-) symbols. Trends are statistically significant at  $p \leq .05$ )<sup>2</sup>.

<sup>1</sup>BBS Central Region – Mississippi River to Rocky Mountains

<sup>2</sup>Disclaimer for route trends: single-site analysis – variance may not be valid.

Disclaimer for regional trends: data for some species may be deficient in some way – caution required.

## Conclusions

All of the data sets from Lennox BBS are interesting but they are not all equally informative. Descriptive data such as is found in Figs. 2 & 5 and Table 1 is unequivocally informative since it represents what actually was the case along the route. The trend analyses, as found in Figs. 3 & 4 and Table 2, although potentially more interesting and important, have to be assessed with some caution. That's because, in some cases, one or more assumptions for the valid application of statistical procedures are not met. However, when a region trend is consistent with a route trend as was often the case (Table 2), one's confidence in the reality of the route trend is substantially increased.

Although answers to “what” questions are relatively easy to obtain, answers to “why” questions present a considerable challenge. For example, regarding the Lennox BBS data, one might want to correlate bird changes with habitat context changes that have taken place along the route. Indeed, there have been a number of such habitat changes; for example, fewer pastures, fewer small grain fields, fewer farmsteads, fewer farmsteads with livestock, fewer line fences, more hard-surface roads, more urban development, global warming. Really good data on such habitat changes would have to be available before efforts at correlation could be made. Even if valid correlations could be made, there would remain the challenge of defining cause-and-effect relationships. In the context of the bird survey data, attempts to answer “why” questions are largely exercises in speculation.

## Reference

Sauer, J. R., J. E. Hines, and J. Fallon. 2006. The North American Breeding Bird Survey, Results and Analysis, 1966 – 2006 Version 6.2.2006. USGS Patuxent Wildlife Research Center, Laurel, MD

Gilbert W. Blankespoor  
1004 Savannah Dr.  
Sioux Falls, SD 57103

*Western Meadowlarks are one of the most delightful signs of spring in South Dakota. The scientific name is Sturnella neglecta. There is a rumor that this is because Lewis and Clark “neglected” to find them. That would have been impossible. And as a matter of record, the Corps refers to them often, using the name Old Field Lark.*

*Gouache over watercolor wash. 12/10/04*

*Artwork: Michael Retter*



# GENERAL NOTES

---

---

## JUNE HARTER WATERFOWL AREA HONORS FORMER EDITOR OF SOUTH DAKOTA BIRD NOTES

On 2 June 2005, the U.S. Fish and Wildlife Service and the family of June Harter dedicated the June Harter Waterfowl Production Area in Hyde County, South Dakota. Establishment of this memorial to the former editor of *South Dakota Bird Notes* resulted from the generous efforts of June's son and three daughters and from the alertness of U.S. Fish and Wildlife personnel at the Huron Wetland Management District. Realizing the area's potential to enhance waterfowl production in Hyde County, they endeavored to secure the land for that purpose.



*June Harter 1914 - 2002*

The area will provide suitable habitat for many non-game species as well as waterfowl. When in the vicinity, SDOU members may want to visit the June Harter unit, consisting of nine quarter sections from the Harter family ranch south of Highmore, SD, in Eagle Township. Additionally, some members may wish to assist the USF&WS Wetland Management District at Huron, SD, to develop additional information about non-game birds that utilize the production area. ~ *L.M. Baylor, Rapid City*

---

---

### I WAS THERE!

In one of those serendipitous moments that life provides on occasion, on 1 June 2005, I happened to be on my way to Minot, ND, to meet birders from Florida to lead a "North Dakota Prairies" birding tour. Driving west of Miller and seeing intimidating lightning storms in the distance and with night approaching, I decided that if there were a motel in Highmore, I would spend the night and hope for sunshine in the morning to continue on.

As I was watching television in the Prairie View Motel, Highmore's only motel, I saw that there was a local crawl on the bottom of the screen occasionally. It gave local events and news. As I was thinking how great a service that was for a town obviously too small for a station of its own, I read that the next morning, Saturday, 2 June 2005, there would be a celebration dedicating the June Harter Waterfowl Production Area nine miles south of town.

I had only read of June Harter, as my very first issue of *South Dakota Bird Notes* was the issue with her photo on the cover, though reading her obituary by Les Baylor was a good introduction. I was therefore thrilled to attend the dedication. It delayed me just a little getting to Minot, but I was glad to be there. ~ *Douglas Chapman, Sioux Falls*

Be sure to visit a wonderfully complete story of this area at:  
[http://www.tiac.net/~cri\\_c/june/brochure.html](http://www.tiac.net/~cri_c/june/brochure.html)



*A Black-headed Gull has appeared each fall for several years now at the extreme Northwest corner of Big Spirit Lake, Iowa, much as Barrow's Goldeneye(s) are reliable on Canyon Lake in Rapid City, of which Jocie Baker keeps us informed. South Dakota still has no record of this rarity. Be on the lookout—it could show up any time as our next state record. Dickenson County, IA. 9/30/05*

*Photo: Jay Gilliam*

*The “White-winged” Junco is a subspecies of the Dark-eyed Junco, though formerly it was considered a separate species. It breeds nearly exclusively in the Black Hills of South Dakota and Wyoming. There is recently some evidence that it breeds in Nebraska's Pine Hills in low numbers. Colored pencil. 10/1/02.*

*Artwork: Michael Retter*



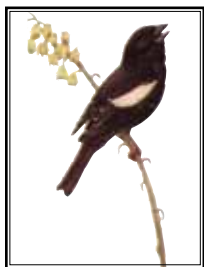
ton, D.C. While traveling on US 16 near Pukwana, SD, he observed a Yellow Rail in a slough near the highway.

Two biographical articles appear in this issue of *Bird Notes*. Today the term “Over” evokes thought of the museum’s title at the University of South Dakota. E. P. Churchill’s tribute, “William H. Over: Dean of South Dakota Naturalists,” makes us aware the Dr. Over was much more than just the museum’s curator. From the article we infer that Over was an early twentieth century pioneer in the study of South Dakota’s flora and fauna.

Another pioneer of early twentieth century biology in South Dakota, especially in ornithology, was Stephen S. Visser. His interest in birds evolved in the 1890s. As the son of homesteaders in Sanborn County, he verified 150 avian species near his home. At the request of President Herman Chapman, Visser wrote, “Bird Study in South Dakota” for the first issue of SDOU’s journal. He stressed the opportunities for study due to the diversity of habitats throughout the state that make possible a wide distribution of bird life. Editor Lamster appended a bibliography of Visser’s numerous publications about birds in South Dakota to the article.

Also in this issue, we have another focus on bird study for our state. In “Opportunity—Challenge,” O. S. Pettingill, Jr., Professor of Zoology, Carleton College, Northfield, MN, expressed his pleasure with the establishment of SDOU and emphasized the need for systematic study of prairie birds, especially to clarify the ranges for various species.

In a letter that Editor Lamster titled: “An Emblem for the Union,” Dr. Pettingill raised the issue of selecting an official emblem for SDOU. He suggested the Lark Bunting, his favorite “prairie songster,” as representative of the prairie. Today, members know H. Wayne Trimm’s color rendition of the Lark Bunting as our emblem.



As well as publication of SDOU’s initial Constitution and By-Laws in Vol. 1, No. 1 of *Bird Notes*, the editor included the “Charter Membership Roll of South Dakota Ornithologists’ Union.” It lists Dr. W. H. Over as an honorary member, 150 active members and 14 junior members (ages 12-16). According to our current SDOU Treasurer, Nelda Holden, only two charter members continued as members in 2006: Bruce Harris and Lester R. Lauritzen. If any reader believes a current charter member has been overlooked, please notify the editor. ~L. M. Baylor, Rapid City

# SEASONAL REPORTS

## The 2006 Fall Season

Compiled By: Jeffrey S. Palmer

01 August 2006 to 30 November 2006

College of Arts & Sciences  
Dakota State University  
Madison, SD 57042

There were 298 species reported during the 2006 Fall Season. The 10-year average (1996-2005) is 302. Below, I have tried to highlight the more significant sightings (dates that are earlier/later than listed in *Birds of South Dakota* by Tallman, Swanson, and Palmer and species that are significantly out of range). For early/late migration dates, I have listed the three earliest/latest dates (by county). However, if these did not include a sighting East River, West River, and along the Missouri River, I have included the earliest/latest reported date from the missing region also. Included at the end of this report is a list of species that were not reported this year but might be expected during the Fall Season. A species is placed on the list if it was not reported this year but had been reported during fall in at least 2 of the previous 5 years. Numbers in parentheses indicate the number of consecutive years (up to 4) that the species has appeared on the list during the season. **Blue-winged Warbler** has not been reported for the past five fall seasons and was removed from the list.

**Greater White-fronted Goose** All Reports: 31 Oct Stanley RDO; 01 Nov Charles Mix RM; 02 Nov Stanley KM; 03 Nov Pennington JLB; 04 Nov Kingsbury JSP; 04 Nov Stanley RDO; 26 Nov Stanley KM

**Snow Goose** Early: 26 Aug Kingsbury JSP; 26 Oct Grant BJU; 31 Oct Minnehaha MS; 31 Oct Stanley RDO; 31 Oct Charles Mix RM ... Late: 26 Nov Stanley KM; 26 Nov Hughes RDO; 24 Nov Kingsbury JSP; 24 Nov Brown MRZ; 24 Nov Charles Mix RM

**Ross's Goose** Early: 31 Oct Stanley RDO; 03 Nov Pennington JLB; 10 Nov Day MO ... Late: 26 Nov Stanley KM; 26 Nov Hughes RDO; 16 Nov Roberts BJU; 16 Nov Day BJU

**Cackling Goose** Early: **16 Oct Grant BJU; 30 Oct Roberts BJU**; 31 Oct Stanley RDO

**Trumpeter Swan** Confirmed Breeding: 14 Aug Tripp (FL) DB ... also reported 28 Oct Tripp RDO

**Tundra Swan** Early: 16 Oct Deuel BJU; 23 Oct Day WS; 02 Nov Hughes KM; 02 Nov Stanley RDO ... Late: 16 Nov Grant BJU; 16 Nov Day BJU

**Wood Duck** Late: 30 Nov Pennington JLB; 20 Nov Stanley RDO; 09 Oct Hughes KM; 07 Oct Minnehaha JSP

**Gadwall** Late: 30 Nov Pennington JLB; 26 Nov Stanley DB; 24 Nov Kingsbury JSP; 24 Nov Hughes DB

**American Wigeon** Late: 30 Nov Pennington JLB; 24 Nov Kingsbury JSP; 21 Nov Charles Mix RM

**Blue-winged Teal** Late: 20 Nov Stanley RDO; 11 Oct Meade JLB; 16 Sep Kingsbury JSP

**Cinnamon Teal** Only Report: **12 Oct Grant BJU**

**Northern Shoveler** Late: 24 Nov Kingsbury JSP; 20 Nov Stanley RDO; 17 Nov Day WS, MO; 01 Nov Meade JLB

**Northern Pintail** Late: 24 Nov Kingsbury JSP; 16 Nov Day BJU; 14 Nov Charles Mix RM; 13 Nov Butte JLB

**Green-winged Teal** Late: 25 Nov Charles Mix RM; 18 Nov Kingsbury JSP; 16 Nov Day BJU; 03 Nov Pennington JLB

**Canvasback** Late: 20 Nov Stanley RDO; 16 Nov Pennington JLB; 16 Nov Grant BJU; 16 Nov Day BJU

**Redhead** Late: 30 Nov Pennington JLB; 26 Nov Stanley DB; 25 Nov Harding KM; 16 Nov Day BJU

**Ring-necked Duck** Late: 30 Nov Pennington JLB; 16 Nov Grant BJU; 16 Nov Day BJU; 04 Nov Stanley RDO

**Greater Scaup** Early: 26 Oct Grant BJU; 01 Nov Stanley RDO; 11 Nov Yankton BFH ... Late: 20 Nov Stanley RDO; 17 Nov Day MO

**Lesser Scaup** Late: 30 Nov Pennington JLB; 24 Nov Kingsbury JSP; 24 Nov Hughes DB

**Surf Scoter** All Reports: 16 Oct Grant BJU; 04-08 Nov Stanley RDO, KM; 11 Nov Yankton BFH; 11 Nov Charles Mix RM

**White-winged Scoter** All Reports: **12 Oct Stanley RDO; 16 Oct Grant BJU**; 16 Nov Day BJU

**Long-tailed Duck** Early: **22 Oct Hughes RDO; 22 Oct Stanley DB**; 16 Nov Day BJU; 25 Nov Harding KM ... Late: 26 Nov Hughes RDO; 08 Nov Stanley RDO

**Bufflehead** Early: 20 Sep Day MO; 09 Oct Pennington JLB; 11 Oct Meade JLB; 14 Oct Stanley DB; 14 Oct Sully KM

**Common Goldeneye** Early: 26 Oct Pennington JLB; 28 Oct Kingsbury JSP; 30 Oct Roberts BJU; 31 Oct Stanley RDO

**Barrow's Goldeneye** Early: **05 Nov Pennington JLB**

**Hooded Merganser** Early: 01 Aug Deuel BJU; 12 Oct Pennington JLB; 13 Oct Stanley KM ... Late: 30 Nov Pennington JLB; 24 Nov Hughes DB; 20 Nov Stanley RDO; 18 Nov Kingsbury JSP

**Common Merganser** Early: 30 Aug Pennington JLB; 28 Oct Stanley KM; 11 Nov Kingsbury JSP

**Red-breasted Merganser** All Reports: 09 Nov Charles Mix RM; 10 Nov Day MO; **16 Nov Day BJU**; 26 Nov Hughes RDO; 30 Nov Charles Mix RM

**Ruddy Duck** Late: 24 Nov Kingsbury JSP; 20 Nov Stanley RDO; 17 Nov Day MO; 03 Nov Pennington JLB

**Gray Partridge** All Reports: 01 Aug Meade EEM; 10 Aug Harding CEM; 05 Oct Custer MMM; 20 Oct Harding CEM; 16 Nov Pennington AKB

**Greater Sage-Grouse** All Reports: 02 Aug Harding KM; 02 Aug Butte CEM; 03 Aug Harding KM; 30 Aug Butte CEM

**Greater Prairie-Chicken** All Reports: 04 Aug Stanley DB; 14 Aug Tripp DB; 19 Aug Jones DB; 09 Sep Jones DB; 01 Oct Stanley DB; 25 Nov Lyman DB

**Northern Bobwhite** Only Report: 27 Aug Union BFH

**Pacific Loon** Only Report: **15 Oct** – 02 Nov **Hughes** and Stanley **RDO, KM, DB, JSP, MS**

**Common Loon** Early: 19 Sep Charles Mix RM; 14 Oct Sully KM; 21 Oct Yankton BFH; 28 Oct Kingsbury JSP ... Late: 18 Nov Kingsbury JSP; 04 Nov Sully KM; 30 Oct Roberts BJU

**Pied-billed Grebe** Late: 18 Nov Hughes KM; 16 Nov Day BJU; 09 Nov Pennington JLB

**Horned Grebe** Early: 21 Sep Grant BJU; 21 Sep Charles Mix RM; 23 Sep Kingsbury JSP; 09 Oct Meade JLB ... Late: 16 Nov Day BJU; 10 Nov Hughes KM; 14 Oct Kingsbury JSP

**Red-necked Grebe** Only Report: **03 Nov Sully KM**

**Eared Grebe** Late: 12 Nov Clay DS; 28 Oct Minnehaha MRZ; 27 Oct Sully RDO; 15 Oct Meade JLB

**Western Grebe** Late: 18 Nov Kingsbury JSP; 16 Nov Pennington JLB; 13 Nov Butte JLB; 11 Nov Sully KM

**Clark's Grebe** Only Report: 20 Sep Day MO

**American White Pelican** Late: 26 Nov Perkins KM; 24 Nov Kingsbury JSP; 18 Nov Yankton DS

**Double-crested Cormorant** Late: 25 Nov Charles Mix RM; 17 Nov Day MO; 11 Nov Sully KM; 23 Oct Meade JLB

**American Bittern** All Reports: 22 Oct Stanley DB; 21 Oct Stanley MS; 15 Oct Stanley DB; 14 Oct Stanley DB; 27 Aug Union BFH

**Great Blue Heron** Late: 26 Nov Hughes RDO; 25 Nov Gregory RM; 24 Nov Kingsbury JSP; 08 Oct Custer MMM

**Great Egret** Late: 14 Oct Kingsbury JSP; 07 Oct Minnehaha JSP; 17 Sep Bon Homme RM

**Snowy Egret** All Reports: 04 Sep Hamlin BFH; 26 Aug Kingsbury JSP

**Cattle Egret** All Reports: 03 Sep Hughes RDO, KM; 02 Sep Kingsbury JSP

**Green Heron** All Reports: 19 Aug Moody JSP; 19 Aug Minnehaha MS

**Black-crowned Night-Heron** All Reports: 04 Sep Hamlin BFH; 02 Sep Kingsbury JSP; 19 Aug Minnehaha MS; 18 Aug Stanley DB

**White-faced Ibis** All Reports: 07 Oct Minnehaha JSP; 18 Sep Roberts MO; 04 Sep Hamlin BFH; 25 Aug Day MO; 07 Aug Grant BJU

**Turkey Vulture** Late: 20 Oct Lincoln MRZ; 07 Oct Minnehaha JSP; 05 Oct Pennington JLB; 03 Oct Hughes DB

**Osprey** Late: 09 Nov Charles Mix RM; 23 Sep Kingsbury JSP; 18 Sep Roberts MO; 10 Sep Meade JLB

**Northern Harrier** Late: 30 Nov Charles Mix RM; 24 Nov Kingsbury JSP; 19 Nov Meade AKB

**Sharp-shinned Hawk** Early: 02 Sep Hughes KM; 23 Sep Kingsbury JSP; 01 Oct Stanley KM

**Northern Goshawk** All Reports: 15 Oct Sully KM; 20 Nov Faulk MMM

**Broad-winged Hawk** All Reports: 27 Sep Stanley KM; 20 Sep Day MO; 09 Sep Kingsbury JSP; 24 Aug Meade EEM

**Swainson's Hawk** Late: 30 Oct Roberts BJU; 23 Sep Kingsbury JSP; 02 Sep Harding DB; 06 Sep Gregory RM

**Ferruginous Hawk** Late: 30 Nov Pennington JLB; 13 Nov Butte JLB; 04 Nov Sully KM

**Rough-legged Hawk** Early: 07 Oct Harding CEM; 17 Oct Pennington MMM; 30 Oct Roberts BJU; 04 Nov Sully KM

**Golden Eagle** Early: 15 Oct Sully KM; 25 Nov Lyman DB

**Merlin** Early: **16 Aug Lake JSP**; 28 Aug Hughes DB; 10 Sep Sully KM

**Gyr Falcon** Only Report: 16 Nov Grant BJU

**Peregrine Falcon** All Reports: **20 Aug Brown GO**; **24 Aug Minnehaha DS**; **27 Aug Sully RDO**; 30 Sep Clay DS; 02 Oct Sully RDO; 07 Oct Custer MMM

**Prairie Falcon** Early: 05 Aug Sully RDO; 20 Aug Stanley DB; 14 Sep Day MO

**Virginia Rail** Only Report: 12 Aug Brown GO

**Sora** All Reports: 15 Oct Stanley DB; 05 Sep Hughes KM; 04 Sep Brookings BFH; 13 Aug Hughes KM; 12 Aug Brown GO

**American Coot** Late: 30 Nov Pennington JLB; 24 Nov Kingsbury JSP; 16 Nov Day BJU; 05 Nov Charles Mix RM

**Sandhill Crane** Early: 20 Sep Charles Mix RM; 27 Sep Custer MMM; 29 Sep Haakon; 28 Oct Kingsbury JSP ... Late: 16 Nov Day BJU; 02 Nov Meade AKB; 31 Oct Charles Mix RM

**Whooping Crane** Only Report: 22 Oct Day WS

**Black-bellied Plover** Early: **03 Aug Sully RDO**; **07 Aug Grant BJU**; **12 Aug Brown GO** ... Late: 28 Oct Kingsbury JSP; 27 Oct Sully RDO; 18 Oct Stanley RDO

**American Golden-Plover** Early: 20 Sep Day MO; 29 Sep Charles Mix RM; 02 Oct Sully RDO ... Late: **11 Nov Kingsbury JSP**; 10 Nov Day MO; 21 Oct Sully KM

**Semipalmated Plover** Late: **16 Oct Deuel BJU**; **14 Oct Kingsbury JSP**; 02 Oct Sully RDO; 26 Aug Meade JLB

**Piping Plover** All Reports: 15 Aug Sully RDO; 05 Aug Sully RDO; 03 Aug Sully RDO

**Killdeer** Late: 30 Nov Pennington JLB; 30 Oct Roberts BJU; 28 Oct Minnehaha MRZ; 27 Oct Sully RDO, KM

**American Avocet** Late: 28 Oct Kingsbury JSP; 27 Oct Sully RDO; 06 Sep Meade JLB

**Greater Yellowlegs** Late: 04 Nov Kingsbury JSP; 29 Oct Clay DS; 27 Oct Sully RDO, KM; 23 Oct Meade JLB

**Lesser Yellowlegs** Late: 29 Oct Sully KM; 29 Oct Clay DS; 26 Oct Grant BJU; 15 Oct Meade JLB

**Solitary Sandpiper** Late: 29 Sep Charles Mix RM; 09 Sep Kingsbury JSP; 26 Aug Meade JLB

**Willet** Late: 23 Sep Kingsbury JSP; 10 Sep Sully KM; 18 Aug Harding KM

**Spotted Sandpiper** Late: 29 Sep Charles Mix RM; 18 Sep Stanley RDO; 09 Sep Kingsbury JSP; 30 Aug Pennington JLB

**Upland Sandpiper** Late: **12 Sep Custer MMM**; 19 Aug Jones DB; 12 Aug McCook JSP; 06 Aug Sully KM

**Marbled Godwit** Late: 23 Sep Kingsbury JSP; 30 Aug Meade JLB; 16 Aug Brown GO; 13 Aug Sully RDO



**Sanderling** Early: 03 Aug Sully RDO; 26 Aug Kingsbury JSP; 08 Sep Hughes KM ... Late: **28 Oct Kingsbury JSP**; 27 Oct Sully RDO; 18 Sep Stanley RDO

**Semipalmated Sandpiper** Late: 09 Oct Sully RDO; 06 Sep Meade JLB; 19 Aug Moody JSP; 19 Aug Minnehaha MS

**Least Sandpiper** Late: 28 Oct Kingsbury JSP; 27 Oct Sully RDO; 07 Oct Minnehaha JSP; 06 Sep Meade JLB

**Baird's Sandpiper** Late: **04 Nov Kingsbury JSP**; 27 Oct Sully RDO; 15 Oct Meade JLB

**Pectoral Sandpiper** Late: **11 Nov Kingsbury JSP**; 29 Oct Sully KM; 26 Oct Grant BJU; 26 Oct Deuel BJU; 26 Aug Meade JLB

**Dunlin** Only Report: 19 Aug Minnehaha MS

**Stilt Sandpiper** Late: **28 Oct Kingsbury JSP**; **27 Oct Sully RDO**; 07 Oct Minnehaha JSP; 26 Aug Meade JLB

**Buff-breasted Sandpiper** Early: 05 Aug Sully RDO; 19 Aug Minnehaha MS; 20 Aug Lake JSP ... Late: 04 Sep Deuel BJU; 13 Aug Sully RDO

**Short-billed Dowitcher** All Reports: 27 Oct Sully RDO; 04 Sep Hamlin BFH; 23 Aug Grant BJU; 05 Aug Sully RDO; 03 Aug Sully RDO; 01 Aug Deuel BJU

**Long-billed Dowitcher** Late: 29 Oct Sully KM; 29 Oct Clay DS; 28 Oct Kingsbury JSP; 26 Aug Meade JLB

**Wilson's Snipe** Late: 13 Nov Day WS; 04 Nov Clay DS; 30 Oct Roberts BJU; 22 Oct Jones DB

**American Woodcock** All Reports: 15 Oct Hughes EDS; 12 Oct Hughes KM; 22 Sep Sully RDO; 20 Aug Stanley RDO

**Wilson's Phalarope** Late: 02 Sep Miner JSP; 27 Aug Sully RDO; 26 Aug Meade JLB

**Red-necked Phalarope** Late: 24 Sep Union BFH; 22 Sep Sully RDO; 19 Sep Brown MO

**Franklin's Gull** Late: 16 Nov Grant BJU; 28 Oct Minnehaha MRZ; 28 Oct Kingsbury JSP; 17 Oct Stanley RDO; 10 Sep Meade JLB

**Bonaparte's Gull** Early: 23 Sep Buffalo RDO; 09 Oct Meade JLB; 09 Oct Stanley KM; 14 Oct Kingsbury JSP ... Late: 27 Nov Charles Mix RM; 26 Nov Hughes RDO; 24 Nov Stanley DB; **24 Nov Kingsbury JSP**; 09 Nov Pennington JLB

**Mew Gull** All Reports: **13 Oct Stanley RDO**; 17 Nov Stanley RDO; 26 Nov Hughes RDO

**Ring-billed Gull** Late: 30 Nov Charles Mix RM; 26 Nov Hughes RDO; 24 Nov Stanley DB; 24 Nov Kingsbury JSP; 01 Nov Meade JLB

**California Gull** Late: **16 Nov Day BJU**; 18 Sep Stanley RDO; 18 Sep Roberts MO

**Herring Gull** Early: 18 Sep Stanley RDO; 20 Oct Lyman JSP; 21 Oct Yankton BFH; 28 Oct Kingsbury JSP

**Thayer's Gull** All Reports: 17 Oct Stanley RDO; 11 Nov Yankton BFH; 26 Nov Hughes RDO

**Lesser Black-backed Gull** All Reports: **13 Aug Sully RDO**; **03 Sep Hughes KM, RDO**; 26 Nov Hughes RDO

**Glaucous Gull** Only Report: **16 Nov Day BJU**

**Sabine's Gull** Only Report: 18 Sep Stanley RDO

**Caspian Tern** All Reports: 19 Sep Brown MO; 26 Aug Meade JLB; 07 Aug Stanley RDO; 01 Aug Stanley RDO

**Common Tern** Late: 20 Sep Day MO; 15 Sep Lyman KM; 15 Sep Buffalo RDO; 10 Sep Meade JLB

**Forster's Tern** Late: 17 Oct Stanley RDO; 30 Sep Kingsbury JSP; 15 Sep Lyman KM; 15 Sep Buffalo RDO; 18 Aug Harding KM

**Least Tern** Only Report: 01 Aug Stanley RDO

**Black Tern** Late: 15 Sep Lyman KM; 15 Sep Buffalo RDO; 02 Sep Kingsbury JSP; 01 Sep Harding CEM

**Eurasian Collared-Dove** reported from Charles Mix, Faulk, Grant, Hughes, Kingsbury, Lake, McCook, Meade, Pennington, Stanley, and Yankton counties

**Mourning Dove** Late: 11 Nov Meade EEM; 28 Oct Minnehaha MRZ; 26 Oct Hughes KM; 26 Oct Tripp RM

**Barn Owl** All Reports: 01 Sep Charles Mix RM; 09 Sep Sully KM; 06 Aug Sully KM; **08 Nov Charles Mix RM**

**Snowy Owl** Only Report: 25 Nov Harding KM

**Burrowing Owl** Late: 01 Oct Stanley RDO; 01 Oct Jones DB; 30 Sep Pennington KM; **09 Sep Kingsbury JSP**

**Long-eared Owl** All Reports: 06 Aug Day WS; 22 Aug Day WS; 22 Oct Sully KM; 29 Oct Sully KM; 24 Nov Stanley DB

**Short-eared Owl** All Reports: 19 Aug Meade AKB; 16 Nov Roberts BJU; 30 Nov Day WS

**Northern Saw-whet Owl** All Reports: 02 Sep Harding DB; 05 Oct Harding CEM; 27 Oct Sully KM; 29 Oct Harding CEM; 22 Nov Harding KM; 26 Nov Sully DB

**Common Nighthawk** Late: 09 Sep Lake JSP; 05 Sep Meade AKB; 05 Sep Aurora RM; 31 Aug Hughes KM

**Common Poorwill** All Reports: 02 Sep Harding DB; 21 Aug Harding CEM; 13 Aug Meade APB; 03 Aug Harding KM, CEM

**Chuck-will's-widow** Only Report: **07 Aug Stanley RDO**

**Whip-poor-will** Only Report: 09 Sep Sully KM

**Chimney Swift** Late: 22 Sep Lake JSP; 25 Aug Day MO; 19 Aug Moody JSP; 18 Aug Pennington JLB; 16 Aug Hughes KM

**White-throated Swift** All Reports: 02 Sep Harding CEM; 04 Aug Harding KM, CEM

**Ruby-throated Hummingbird** Late: 06 Oct Lake KB; 25 Sep Minnehaha MRZ; 22 Sep Clay DS; 12 Aug Pennington RDO

**Calliope Hummingbird** Only Report: 12 Aug Pennington RDO

**Rufous Hummingbird** Late: **21 Aug Pennington JLB**; 01 Aug Meade EEM

**Belted Kingfisher** Late: 20 Nov Pennington JLB; 19 Nov Hughes KM; 22 Oct Stanley DB; 22 Oct Minnehaha MRZ

**Lewis's Woodpecker** Only Report: 21 Aug Custer JLB

**Red-headed Woodpecker** Late: 30 Oct Roberts BJU; 15 Oct Lincoln MRZ; 16 Sep Stanley RDO; 28 Aug Pennington JLB

**Yellow-bellied Sapsucker** All Reports: 09 Oct Minnehaha MRZ; 26 Sep Stanley DB; 19 Aug Moody JSP

**Red-naped Sapsucker** Only Report: 21 Aug Pennington JLB

**Black-backed Woodpecker** Only Report: 29 Oct Meade AKB

**Pileated Woodpecker** All Reports: 04 Aug Roberts GO; 25 Aug Roberts MO

**Olive-sided Flycatcher** All Reports: 11 Aug Hughes KM; 21 Aug Hughes DB; 26 Aug Hughes RDO; 31 Aug Hughes KM; 03 Sep Kingsbury BFH

**Western Wood-Pewee** Late: 04 Sep Pennington TJ; 18 Aug Meade APB; 04 Aug Harding CEM

**Eastern Wood-Pewee** Late: 14 Sep Day MO; 28 Aug Hughes RDO, KM; 26 Aug Lake JSP

**Yellow-bellied Flycatcher** All Reports: 25 Aug Day MO; 26 Aug Union DS; 28 Aug Hughes KM; 31 Aug Hughes KM; 31 Aug Stanley RDO; 03 Sep Hughes RDO

**Alder Flycatcher** Only Report: **03 Aug Clay (1 singing) DS**

**Willow Flycatcher** All Reports: 22 Aug Stanley RDO; 14 Aug Stanley RDO; 14 Aug Pennington TJ; 11 Aug Pennington TJ; 07 Aug Hughes DB; 06 Aug Pennington JLB

**Least Flycatcher** Late: 20 Sep Day MO; 13 Sep Hughes EDS; 22 Aug Stanley RDO

**Eastern Phoebe** Late: 08 Oct Minnehaha MRZ, MS; 02 Oct Hughes KM; 03 Sep Lyman RDO

**Say's Phoebe** Late: 16 Sep Sully KM; 16 Sep Jones RDO; 02 Sep Harding DB

**Great Crested Flycatcher** Late: 09 Sep Kingsbury JSP; 03 Sep Minnehaha MS; 03 Sep Hughes KM; 12 Aug Pennington JLB

**Western Kingbird** Late: 10 Sep Sully KM; 31 Aug Charles Mix RM; 30 Aug Pennington JLB; 30 Aug Harding CEM; 26 Aug Kingsbury JSP

**Eastern Kingbird** Late: 16 Sep Miner JSP; 16 Sep Charles Mix RM; 02 Sep Kingsbury JSP; 02 Sep Harding DB

**Loggerhead Shrike** Late: 03 Sep Stanley RDO; 02 Sep Harding DB; 30 Aug Pennington JLB; 25 Aug Day MO

**Northern Shrike** Early: **10 Oct Stanley RDO**; 14 Oct Sully KM; 15 Oct Harding CEM; 10 Nov Day MO

**Bell's Vireo** Late: 31 Aug Stanley RDO; 28 Aug Hughes KM; 27 Aug Sully RDO; 06 Aug Pennington JLB

**Plumbeous Vireo** Only Report: 12 Aug Pennington RDO

**Blue-headed Vireo** Early: **21 Aug Edmunds JDW**; **21 Aug Hughes DB**; 26 Aug Stanley RDO ... Late: 20 Sep Day MO; 14 Sep Deuel BJU; 03 Sep Minnehaha MS; 02 Sep Hughes KM

**Warbling Vireo** Late: 19 Sep Brown MO; 09 Sep Kingsbury JSP; 08 Sep Stanley DB; 08 Sep Hughes EDS; 20 Aug Pennington JLB

**Philadelphia Vireo** All Reports: 24 Aug Stanley RDO; 26 Aug Stanley RDO; 26 Aug Union DS; 27 Aug Sully RDO; 03 Sep Hughes KM; 09 Sep Kingsbury JSP

**Red-eyed Vireo** Late: 15 Sep Hughes KM; 09 Sep Kingsbury JSP; 08 Sep Stanley DB; 05 Sep Pennington TJ

**Gray Jay** All Reports: 14 Aug Custer JLB; 19 Aug Pennington JLB; 24 Aug Meade EEM

**Pinyon Jay** reported from Meade County

**Clark's Nutcracker** All Reports: 14 Aug Custer JLB; 19 Aug Pennington JLB; 21 Aug Pennington JLB; 31 Aug Custer JLB

**Black-billed Magpie** reported **16 Nov Day BJU**

**Purple Martin** All Reports: 26 Aug Lake JSP; 12 Aug McCook JSP

**Tree Swallow** Late: 23 Sep Kingsbury JSP; 21 Sep Grant BJU; 19 Aug Minnehaha MS; 03 Aug Pennington JLB

**Violet-green Swallow** Late: 19 Aug Pennington JLB; 18 Aug Pennington JLB; 12 Aug Pennington RDO; 03 Aug Harding KM

**Northern Rough-winged Swallow** All Reports: 27 Aug Minnehaha MS; 23 Aug Grant BJU; 17 Aug Charles Mix RM; 07 Aug Grant BJU; 01 Aug Deuel BJU; 01 Aug Charles Mix RM

**Bank Swallow** All Reports: 09 Sep Kingsbury JSP; 25 Aug Roberts MO; 23 Aug Grant BJU; 12 Aug Pennington RDO; 07 Aug Grant BJU; 01 Aug Deuel BJU

**Cliff Swallow** Late: 09 Sep Kingsbury JSP; 23 Aug Grant BJU; 19 Aug Pennington JLB; 06 Aug Stanley DB

**Barn Swallow** Late: 30 Sep Minnehaha MRZ; 30 Sep Kingsbury JSP; 21 Sep Grant BJU; 10 Sep Sully KM; 19 Aug Meade AKB

**Red-breasted Nuthatch** Early: 02 Sep Lake JSP; 03 Sep Kingsbury BFH; 04 Sep Brookings BFH; 09 Sep Sully KM

**Brown Creeper** Early: 29 Sep Hughes EDS; 08 Oct Minnehaha MRZ; 10 Nov Day MO

**Rock Wren** Late: 09 Oct Pennington MMM; 30 Sep Jackson KM; 02 Sep Harding DB; 14 Aug Stanley RDO

**Canyon Wren** All Reports: 06 Aug Meade AKB; 12 Nov Meade AKB

**House Wren** Late: 04 Oct Stanley KM; 01 Oct Hughes KM; 23 Sep Kingsbury JSP; 21 Sep Custer MMM

**Winter Wren** Early: **26 Aug Stanley RDO**; 03 Oct Hughes DB; 07 Oct Minnehaha MRZ ... Late: 26 Oct Hughes KM; 15 Oct Lincoln MRZ; 04 Oct Stanley KM

**Sedge Wren** Late: 01 Oct Hughes KM, DB; 16 Sep Sully KM; 19 Aug Moody JSP; 19 Aug Minnehaha MS

**Marsh Wren** Late: 15 Oct Stanley DB; 14 Oct Kingsbury JSP; 30 Sep Clay DS

**Golden-crowned Kinglet** Early: 30 Sep Kingsbury JSP; 04 Oct Hughes EDS; 07 Oct Minnehaha JSP

**Ruby-crowned Kinglet** Early: **23 Aug Stanley KM**; 02 Sep Kingsbury JSP; 16 Sep Lake JSP; 16 Sep Charles Mix RM ... Late: 15 Oct Lincoln MRZ; 14 Oct Kingsbury JSP; 13 Oct Hughes KM; 10 Oct Pennington MMM

**Blue-gray Gnatcatcher** Only Report: 02 Sep Lake JSP

**Eastern Bluebird** Late: 22 Nov Charles Mix RM; 03 Nov Sully KM; 14 Oct Kingsbury JSP; 09 Oct Meade APB

**Mountain Bluebird** Late: **16 Nov Day BJU**; 29 Sep Jackson KM; 25 Sep Meade EEM

**Townsend's Solitaire** Early: 14 Oct Stanley DB; 03 Nov Sully KM; 30 Nov Brookings LH

**Veery** All Reports: 12 Sep Hughes KM; 02 Sep Hughes KM

**Gray-cheeked Thrush** Only Report: **29 Aug Stanley RDO**

**Swainson's Thrush** Early: 28 Aug Hughes KM; 02 Sep Kingsbury JSP; 08 Sep Stanley DB ... Late: 05 Oct Meade APB; 26 Sep Stanley DB; 26 Sep Hughes EDS; 16 Sep Lake JSP

**Hermit Thrush** All Reports: 07 Oct Minnehaha JSP; 09 Oct Minnehaha MRZ

**Gray Catbird** Late: 01 Oct Stanley RDO, KM; 27 Sep Hughes EDS; 17 Sep Lake JSP; 16 Sep Harding CEM

**Northern Mockingbird** Only Report: 14 Aug Stanley RDO

**Brown Thrasher** Late: 11 Oct Hughes KM; 17 Sep Lake JSP; 16 Sep Harding CEM

**American Pipit** Early: 02 Oct Sully RDO; 09 Oct Meade JLB; 09 Oct Stanley KM; 12 Oct Grant BJU ... Late: 04 Nov Kingsbury JSP; 03 Nov Day MO; 26 Oct Grant BJU; 14 Oct Sully KM

**Sprague's Pipit** Late: **22 Oct Jones DB**; 30 Sep Haakon RDO; 25 Sep Meade EEM

**Bohemian Waxwing** All Reports: 29 Oct Sully KM; 07 Nov Stanley RDO; 16 Nov Day BJU; 22 Nov Harding KM

**Golden-winged Warbler** All Reports: **25 Aug Day MO**; **26 Aug Union DS**

**Tennessee Warbler** All Reports: 25 Aug Day MO; 01 Sep Stanley RDO; 03 Sep Kingsbury BFH; 12 Sep Hughes KM; 20 Sep Day MO

**Orange-crowned Warbler** Early: 26 Aug Stanley RDO; 27 Aug Meade AKB; 01 Sep Hughes KM; 03 Sep Kingsbury BFH; 03 Sep Minnehaha MS ... Late: 14 Oct Kingsbury JSP; 13 Oct Hughes KM; 10 Oct Pennington MMM

**Nashville Warbler** Early: 22 Aug Stanley KM; 25 Aug Day MO; 26 Aug Lake JSP ... Late: 07 Oct Minnehaha JSP; 03 Oct Stanley RDO; 20 Sep Day MO

**Northern Parula** Only Report: 11 Sep Hughes KM

**Yellow Warbler** Late: 01 Oct Stanley RDO; 20 Sep Hughes EDS; 20 Sep Day MO; 10 Sep Meade JLB

**Chestnut-sided Warbler** All Reports: **22 Aug Hughes RDO**; 25 Aug Day MO; 01 Sep Hughes KM; 11 Sep Hughes KM; 16 Sep Lake JSP

**Magnolia Warbler** Early: **22 Aug Stanley RDO**; 25 Aug Day MO; 26 Aug Lake JSP ... Late: 24 Sep Union BFH; 14 Sep Hughes EDS; 09 Sep Kingsbury JSP

**Black-throated Blue Warbler** All Reports: **22 Aug Stanley RDO**; **01 Sep Hughes KM**

**Yellow-rumped Warbler** Early: 27 Aug Sully RDO; 28 Aug Hughes DB; 02 Sep Kingsbury JSP ... Late: 09 Nov Hughes KM; 22 Oct Minnehaha MRZ; 22 Oct Jones DB

**Black-throated Green Warbler** All Reports: 24 Aug Stanley RDO; 27 Aug Hughes KM; 09 Sep Kingsbury JSP; 11 Sep Hughes KM

**Townsend's Warbler** Only Report: 26 Aug Pennington TJ

**Blackburnian Warbler** Early: 18 Aug Hughes DB; 22 Aug Stanley RDO; 25 Aug Day MO ... Late: 03 Sep Minnehaha MS; 01 Sep Hughes KM; 26 Aug Union DS

**Pine Warbler** Only Report: 14 Sep Deuel BJU

**Palm Warbler** Only Report: 20 Sep Day MO

**Bay-breasted Warbler** All Reports: 01 Sep Stanley RDO; 09 Sep Kingsbury JSP; 11 Sep Hughes KM; 16 Sep Stanley RDO; 20 Sep Hughes EDS

**Blackpoll Warbler** All Reports: 23 Aug Stanley RDO; 02 Sep Hughes KM; 09 Sep Sully KM; 20 Sep Day MO

**Black-and-white Warbler** Early: 07 Aug Hughes DB; 14 Aug Pennington TJ; 22 Aug Stanley RDO; 25 Aug Day MO ... Late: 15 Sep Hughes KM; 09 Sep Kingsbury JSP; 02 Sep Lake JSP; 30 Aug Pennington JLB

**American Redstart** Late: 20 Sep Day MO; 16 Sep Lake JSP; 15 Sep Hughes KM; 05 Sep Pennington TJ

**Ovenbird** Late: 23 Sep Kingsbury JSP; 20 Sep Day MO; 16 Sep Lake JSP; 15 Sep Hughes EDS; 11 Sep Harding CEM

**Northern Waterthrush** Early: 22 Aug Hughes RDO; 27 Aug Pennington TJ; 02 Sep Kingsbury JSP ... Late: 12 Sep Hughes EDS; 03 Sep Pennington TJ

**Mourning Warbler** Early: 19 Aug Hughes DB; 20 Aug Clay DS; 22 Aug Stanley RDO; 25 Aug Day MO ... Late: 08 Sep Stanley DB; 08 Sep Hughes EDS

**MacGillivray's Warbler** All Reports: 20 Aug Pennington TJ; 11 Sep Hughes EDS

**Common Yellowthroat** Late: 14 Oct Kingsbury JSP; 01 Oct Stanley RDO, KM; 27 Sep Hughes EDS; 10 Sep Meade JLB

**Wilson's Warbler** Early: **09 Aug Pennington TJ**; 17 Aug Stanley RDO; 19 Aug Hughes DB; 25 Aug Day MO ... Late: 01 Oct Stanley RDO, KM; 29 Sep Hughes EDS; 20 Sep Day MO; 11 Sep Custer MMM

**Canada Warbler** Early: **13 Aug Edmunds JDW**; 22 Aug Stanley RDO; 25 Aug Day MO ... Late: 02 Sep Lake JSP; 28 Aug Hughes KM, DB; 26 Aug Stanley RDO

**Yellow-breasted Chat** Late: **09 Oct Hughes KM**; 28 Sep Stanley RDO; 16 Sep Sully KM; 13 Sep Harding CEM; 27 Aug Spink RDO

**Western Tanager** Late: 29 Aug Meade APB; 28 Aug Pennington JLB; 03 Aug Harding KM, CEM

**Spotted Towhee** Late: 18 Nov Hughes KM; 24 Oct Stanley RDO; 09 Oct Minnehaha MRZ; 08 Oct Meade AKB

**Eastern Towhee** Only Report: 06 Aug Minnehaha MS

**American Tree Sparrow** Early: **10 Sep Charles Mix RM**; 13 Oct Stanley KM; 14 Oct Kingsbury JSP; 15 Oct Meade JLB

**Chipping Sparrow** Late: 27 Oct Sully KM; 13 Oct Stanley KM; 07 Oct Minnehaha JSP; 18 Sep Meade EEM

**Clay-colored Sparrow** Late: 03 Oct Stanley RDO; 01 Oct Hughes KM; 25 Sep Jones DB; 09 Sep Kingsbury JSP

**Field Sparrow** Late: 09 Oct Minnehaha MRZ; 03 Oct Hughes DB; 01 Oct Stanley RDO; 25 Sep Jones DB

**Vesper Sparrow** Late: 26 Oct Grant BJU; 26 Oct Deuel BJU; 15 Oct Meade JLB; 10 Oct Stanley RDO

**Lark Sparrow** Late: 01 Oct Stanley DB; 09 Sep Jones DB; 02 Sep Harding DB

**Lark Bunting** Late: 16 Sep Stanley RDO; 14 Sep Custer MMM; 10 Sep Meade JLB

**Savannah Sparrow** Late: 26 Oct Grant BJU; 26 Oct Deuel BJU; 14 Oct Sully KM; 09 Sep Jones DB

**Grasshopper Sparrow** Late: 23 Sep Kingsbury JSP; 19 Aug Moody JSP; 14 Aug Tripp DB; 06 Aug Stanley DB

**Le Conte's Sparrow** All Reports: 19 Sep Hughes KM, RDO; 25 Sep Hughes KM; 30 Sep Clay DS; 09 Oct Hughes KM; 09 Oct Lake TS

**Nelson's Sharp-tailed Sparrow** All Reports: **03 Oct Stanley RDO**; 25 Sep Hughes KM; 19 Sep Hughes RDO, KM

**Fox Sparrow** Early: **13 Sep Harding CEM**; 26 Sep Stanley DB; 09 Oct Hughes KM; 14 Oct Kingsbury JSP ... Late: 13 Nov Clay DS; 15 Oct Lincoln MRZ; 04 Oct Stanley KM

**Song Sparrow** Late: 19 Nov Faulk MMM; 16 Nov Day BJU; 09 Nov Pennington JLB; 05 Nov Charles Mix RM

**Lincoln's Sparrow** Early: 27 Aug Hughes KM; 03 Sep Kingsbury BFH; 16 Sep Lake JSP; 02 Oct Custer MMM ... Late: 09 Oct Hughes KM; 07 Oct Minnehaha JSP; 03 Oct Stanley RDO

**Swamp Sparrow** Late: **18 Nov Yankton DS**; 28 Oct Hughes KM; 15 Oct Stanley DB; 14 Oct Kingsbury JSP

**White-throated Sparrow** Early: **01 Sep Hughes KM; 01 Sep Stanley RDO; 02 Sep Harding DB**; 16 Sep Lake JSP ... Late: 28 Oct Minnehaha MS; 28 Oct Kingsbury JSP; 27 Oct Hughes KM

**Harris's Sparrow** Early: 14 Sep Day MO; 20 Sep Charles Mix RM; 23 Sep Kingsbury JSP; 23 Sep Stanley RDO; 28 Sep Harding CEM ... Late: 26 Nov Charles Mix RM; 05 Nov Pennington JLB; 04 Nov Clay AKB; 28 Oct Kingsbury JSP

**White-crowned Sparrow** Early: 13 Sep Harding CEM; 23 Sep Stanley RDO; 26 Sep Hughes KM; 30 Sep Kingsbury JSP ... Late: 28 Oct Kingsbury JSP; 28 Oct Hughes KM; 22 Oct Stanley DB; 19 Oct Custer MMM

**Dark-eyed Junco** Early: 09 Sep Sully KM; 14 Sep Day MO; 16 Sep Kingsbury JSP

**Lapland Longspur** Early: 26 Oct Deuel BJU; 26 Oct Grant BJU; 27 Oct Sully RDO

**Chestnut-collared Longspur** Late: 30 Aug Pennington JLB; 19 Aug Jones DB; 15 Aug Sully RDO

**Snow Bunting** Early: 26 Oct Deuel BJU; 30 Oct Harding CEM; 03 Nov Day MO; 04 Nov Sully KM

**Northern Cardinal** reported 14 Aug Tripp DB

**Rose-breasted Grosbeak** All Reports: 05 Sep Hughes EDS; 02 Sep Kingsbury JSP; 25 Aug Day MO; 02 Aug Charles Mix RM

**Black-headed Grosbeak** Late: 07 Sep Meade EEM; 02 Sep Hughes KM; 26 Aug Stanley RDO

**Blue Grosbeak** All Reports: 27 Aug Union BFH; 14 Aug Stanley RDO; 06 Aug Sully KM

**Lazuli Bunting** All Reports: 19 Aug Pennington JLB; 11 Aug Meade APB; 06 Aug Pennington JLB

**Dickcissel** Late: 26 Aug Kingsbury JSP; 19 Aug Minnehaha MS; 18 Aug Marshall MO; 12 Aug Pennington JLB

**Bobolink** Late: 02 Sep Kingsbury JSP; 25 Aug Day MO; 19 Aug Pennington JLB; 19 Aug Moody JSP; 13 Aug Hughes KM

**Western Meadowlark** Late: 25 Nov Lyman DB; 04 Nov Charles Mix RM; 30 Oct Roberts BJU; 29 Oct Harding CEM

**Yellow-headed Blackbird** Late: 28 Oct Minnehaha MRZ; 28 Oct Kingsbury JSP; 01 Oct Stanley RDO; 10 Sep Meade JLB

**Rusty Blackbird** Early: 01 Oct Stanley RDO; 14 Oct Sully KM; 26 Oct Grant BJU ... Late: 16 Nov Roberts BJU; 16 Nov Grant BJU; 16 Nov Day BJU; 22 Oct Stanley DB

**Brewer's Blackbird** Late: 04 Nov Kingsbury JSP; 14 Oct Sully KM; 01 Oct Stanley RDO; 06 Sep Meade JLB

**Common Grackle** Late: 16 Nov Roberts BJU; 16 Nov Grant BJU; 16 Nov Day BJU; 12 Oct Charles Mix RM; 21 Aug Meade EEM

**Great-tailed Grackle** All Reports: 14 Oct Kingsbury JSP; 16 Sep Kingsbury JSP

**Brown-headed Cowbird** Late: 30 Oct Roberts BJU; 28 Oct Kingsbury JSP; 07 Oct Minnehaha JSP; 01 Oct Stanley RDO; 19 Aug Meade AKB

**Orchard Oriole** Late: 29 Aug Hughes KM; 25 Aug Day MO; 20 Aug Stanley RDO; 06 Aug Pennington JLB

**Baltimore Oriole** Late: 16 Sep Charles Mix RM; 15 Sep Hughes KM; 02 Sep Lake JSP; 27 Aug Harding CEM

**Pine Grosbeak** All Reports: 28 Oct Stanley KM; 10 Nov Day MO; 16 Nov Day BJU

**Purple Finch** Early: 24 Oct Lake JSP; 24 Oct Stanley RDO; 10 Nov Day MO

**Red Crossbill** reported 03 Nov Roberts MO

**Common Redpoll** All Reports: 13 Oct Hughes KM; 15 Oct Kingsbury TS; 10 Nov Day MO; 16 Nov Day BJU; 17 Nov Sully KM

**Pine Siskin** Early: 30 Sep Kingsbury JSP; 12 Oct Stanley RDO; 04 Nov Day WS

**Reports Requiring Acceptance By The Rare Bird Records Committee**

**Black Scoter** 22 Oct Stanley DB, KM, RDO; 29 Oct Stanley RDO; 04 Nov Stanley KM, RDO; 10 Nov Day MO

**Horned Grebe** 28 Aug Stanley RDO

**Piping Plover** 22 Sep Sully RDO

**Buff-breasted Sandpiper** 09 Oct Sully RDO; 30 Sep Kingsbury JSP  
**Wilson's Phalarope** 26 Oct Stanley RDO  
**Little Gull** 10 Sep Buffalo RDO; 15 Sep Buffalo RDO; 15 Sep Lyman KM  
**Iceland Gull** 26 Nov Hughes RDO  
**Rufous Hummingbird** 30-31 Aug Hughes KM  
**Red-naped Sapsucker** 28 Sep Stanley RDO  
**Scissor-tailed Flycatcher** 10 Sep Sully RDO  
**Philadelphia Vireo** 05 Sep Pennington TJ  
**Canyon Wren** 02 Sep Harding (2) DB  
**Gray-cheeked Thrush** 20 Aug Pennington TJ  
**American Pipit** 29 Aug Minnehaha MS  
**Connecticut Warbler** 20 Aug Pennington TJ  
**Smith's Longspur** 30 Sep Haakon RDO

**Species Expected But Not Reported**

Least Bittern, Little Blue Heron (2), American Black Duck (2), Ruffed Grouse, Long-billed Curlew (2), Hudsonian Godwit (3), White-rumped Sandpiper, Black-legged Kittiwake (4), Black-billed Cuckoo (2), Yellow-billed Cuckoo, American Three-toed Woodpecker, Dusky Flycatcher, Cordilleran Flycatcher, Yellow-throated Vireo, Pygmy Nuthatch, Carolina Wren, American Dipper, Wood Thrush (3), Varied Thrush, Virginia's Warbler, Cape May Warbler (4), Scarlet Tanager (2), Brewer's Sparrow, Indigo Bunting, Bullock's Oriole, Gray-crowned Rosy Finch (2), Cassin's Finch (2), White-winged Crossbill (2), Evening Grosbeak

**Contributing Observers**

DB	Doug Backlund	GO	Gary Olson
JLB	Jocelyn L. Baker	RDO	Ricky D. Olson
KB	Kristel Bakker	MO	Mark Otnes
APB	Addison & Patricia Ball	JSP	Jeffrey S. Palmer
AKB	Anna K. Ball	MS	Mark Schmidtbauer
LH	Lois Haertel	TS	Terry Sohl
BFH	Bill F. Huser	WS	Waubay NWR Staff
TJ	Todd Jensen	EDS	Eileen Dowd Stukel
RM	Ron Mabie	DS	David Swanson
MMM	Michael M. Melius	BJU	Bill J. Unzen
CEM	Charles E. Miller	JDW	J. David Williams
EEM	Ernest E. Miller	MRZ	Mick R. Zerr
KM	Kenny Miller		



*The Common Loon is uncommonly beautiful. Towards spring it is good to see the change from drab winter plumage to the elegant breeding plumage seen here. Bald Lake, Alaska. 6/20/06*  
 Photo: Terry Sohl



## Contents

President's Page.....	3
by Rosemary Draeger	
From Our Past...in SD Bird Notes .....	4
by L. M. Baylor	
Editorial .....	5
by Douglas E. Chapman	
The Lennox South Dakota Breeding Bird Survey .....	6
by Dr. Gilbert Blankespoor	
Dedication of the June Harter Wetland .....	11
Near Highmore, SD	
by L.M. Baylor	
2006 Fall Seasonal Reports.....	14
by Jeffrey S. Palmer	
Harris's Sparrow, Stanley County, SD.....	Back Cover
Photo: Doug Backlund	