

---

S O U T H   D A K O T A  
O R N I T H O L O G I S T S '   U N I O N

---



S O U T H  
B I R D



D A K O T A  
N O T E S

---

VOL. 57

SEPTEMBER 2005

NO. 3

---

SOUTH DAKOTA BIRD NOTES, the official publication of the South Dakota Ornithologists' Union (organized 1949), is sent to all members whose dues are paid for the current year. Life members \$320.00; Family life members (husband and wife) with 1 subscription to Bird Notes \$480; sustaining members \$30.00, regular members \$16.00; family members (husband and wife) with 1 subscription \$20.00; juniors (10–16) \$8.00; libraries (subscription) \$20.00. Single and back copies: Members \$4.00, Nonmembers \$5.00. All dues payments, change-of-address notices, and orders for back copies should be sent to the Treasurer, Nelda Holden, 1620 Elmwood Drive, Brookings, SD 57006. Manuscripts for publication should be sent to Dan Tallman, NSU Box 740, Aberdeen SD, 57401, or to Tallmand@northern.edu via E-mail.

VOL. 57	SEPTEMBER 2005	NO. 3
HENSLOW'S SPARROW, Robb Schenck		Cover
PRESIDENT'S PAGE		47
SDOU BOARD OF DIRECTORS' MINUTES		48
TWENTY-FIVE YEARS OF BIRD BANDING IN ABERDEEN, SOUTH DAKOTA, Dan Tallman		49
GENERAL NOTES — A Possible Hybrid Scarlet/Western Tanager from the Slim Buttes in Harding County; Magnificent Hummingbird—A First South Dakota Record		59
SEASONAL REPORTS		61

SOUTH DAKOTA ORNITHOLOGISTS' UNION  
Officers 2004 – 2005

President	Dan Tallman	NSU Box 740, Aberdeen 57401
Vice President	Rosemary Draeger	528 E. Lotta St., Sioux Falls, SD 57105
Secretary	David Swanson	USD, Vermillion 57069
Treasurer	Nelda Holden	1620 Elmwood Drive, Brookings 57006
Editor	Erika Tallman	NSU Box 740, Aberdeen 57401
Librarian	Jeffrey Palmer	DSU, Madison, SD 57042

Elected Directors

- For Term expiring 2005: Addison Ball, Piedmont; Kent Jensen, Brookings; Ron Mabie, Pickstown; Kenny Miller, Pierre; Erika Tallman, Aberdeen.
- For Term expiring 2006: Vic Fondy, Whitewood, Linda Johnson, Sioux Falls, Eric Liknes, Vermillion, Ricky Olson, Pierre, and Doug Backlund, Pierre
- For Term expiring 2007: Marie Curtin, Custer; Ron Martin, Minot, ND; Rosemary Draeger, Sioux Falls; Dan Tallman, Aberdeen; Duane Weber, Custer.

Past President Directors

Jocelyn L. Baker, L. M. Baylor, Gilbert Blankespoor, Ken Graupmann, Cccil Haight, Byron Harrell, Bruce Harris, Nelda Holden, Todd Jensen, Jeffrey Palmer, Rex Riis, Dennis Skadsen, Robb Schenck, David Swanson, J. David Williams.

Associate Editor: Dan Tallman



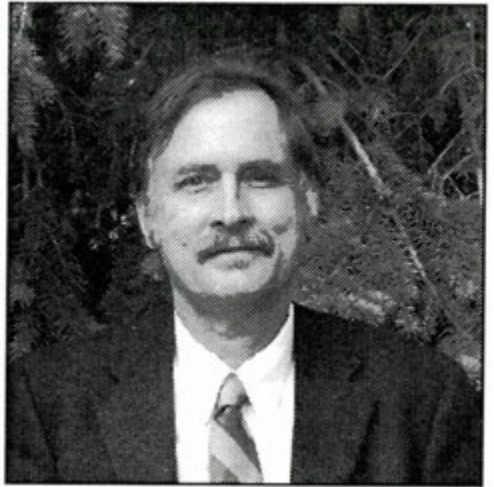
## ***PRESIDENT'S PAGE***

Scientists have discovered keys to the secrets of the genes that will allow medicine to take almost unimaginable leaps toward curing genetic diseases. This frontier is also exciting for ornithologists. The discovery of similarities and differences in the genetic makeup of birds is revolutionizing avian systematics. The results of these discoveries are mirrored in frequent modifications in the order in which birds appear in our checklists and publications.

Some birders are perplexed and annoyed by this upheaval. Almost every year the order of birds on checklists and in reports in *Bird Notes* have to be rearranged. Not so many years ago, this was not the case, when we all more or less followed the Wetmore sequence used in the Peterson field guides. Some birders, nostalgic for simpler times, have gone so far as to suggest that we boycott publications that change the sequence of birds.

I find this attitude unfortunate. Fundamentally, science must be responsive to new data. Should we return to classifying whales as fish? That was how Aristotle classified them. Indeed, some people, regardless of recent fossil evidence, don't believe in a terrestrial link between whales and land mammals. Most of my readers, I trust, would agree that the willingness to consider new evidence, which is the foundation of scientific thinking, is a good thing.

The annual changes in list sequences can be frustrating for list-keepers. Presumably, as more is learned about the genetics of birds, there will follow another period of systematic stability. I think we should all enjoy these times in which we live. What an exciting era to be a birder, with widespread, annual discoveries that rock the formerly staid scientific community. Yellow-breasted Chats become blackbirds. Starlings are found to be closely related to mockingbirds. Warblers and vireos are not closely related. The list of changes in our understanding of avian genetics seems endless and confusing. But wouldn't it be a bore if everything was known or if checklists were arbitrary, having no relationship to the richness of scientific discovery? *Dan Tallman, Northern State University, Aberdeen, SD 57401.*



Editor's note: SDOU member Dick Peterson suggested that we regularly publish the approved minutes of SDOU meetings. I agree that including minutes in *Bird Notes* will improve communication among our members. Here are the most recently approved minutes.

**MINUTES OF THE BOARD OF DIRECTORS MEETING  
SOUTH DAKOTA ORNITHOLOGISTS' UNION  
PIERRE, SOUTH DAKOTA  
9 October 2004**

President Jensen called the meeting to order at 4:53 pm.

**Elected Directors Present:** D. Backlund, A. Ball, M. Curtin, R. Draeger, V. Fondy, T. Jensen, L. Johnson, E. Liknes, R. Mabie, R. Martin, K. Miller, R. Olson, D. Tallman, and E. Tallman. **Elected Directors Absent:** D. Weber. **Past President Directors present:** J. Baker, N. Holden, J. Palmer, and D. Swanson. **Past President Directors absent:** L. Baylor, G. Blankespoor, K. Graupmann, C. Haight, B. Harris, B. Harrell, R. Riis, R. Schenck, D. Skadsen and D. Williams

The minutes of the 5 June 2004 BOD meeting at the Logging Camp Ranch, Amidon, North Dakota were read and approved.

**Old Business:**

1) Spring Meeting Dates: The BOD approved the suggested spring 2005 meeting dates of 20-22 May in Vernillion.

2) SDOU Archives: Dan Tallman mentioned that the Northern State University library had agreed to archive the SDOU materials. The BOD established an Archives Working Group, consisting of Rosemary Draeger, Jeff Palmer, Eric Liknes and Dan Tallman, to examine the following archiving questions and report back to the BOD:

- What does SDOU want/need to archive?
- Where does SDOU want to archive these materials?
- What SDOU materials are currently archived?
- In what format does SDOU want to archive materials?

**New Business:**

1) Bald Eagle Awareness Days: President Jensen initiated a discussion of whether SDOU wants to authorize expenditures for Bald Eagle Awareness Days so that SDOU can respond to any request for funds should such a request come. Johnson/Baker moved/seconded that the BOD authorize up to a \$100 donation. The motion passed unanimously.

2) Election of Officers: Jocie Baker, on behalf of the Nomination Committee (Baker, Ball, Swanson), presented a slate of officers for approval by the BOD. These included: President, Dan Tallman; Vice President, Rosemary Draeger; Secretary, David Swanson; Treasurer, Nelda Holden; Editor, Erika Tallman; Librarian, Jeff Palmer. The BOD unanimously approved these candidates.

3) Investment Interest: Vic Fondy brought up the topic of examining possibilities for increasing the interest gained from the SDOU funds, as CDs are not currently offering substantial interest returns. Discussion followed.

The meeting was adjourned at 5:26 pm.

Respectfully submitted,

David Swanson, Secretary

# TWENTY-FIVE YEARS OF BIRD BANDING IN ABERDEEN, SOUTH DAKOTA

Dan A. Tallman  
Northern State University, Aberdeen, SD 57401

## **Abstract**

This report covers 25 years of banding, 1980-2004. During this time I banded 58,360 individual birds, comprising 124 species. My data appear to demonstrate a long-term decline in overall species numbers over these years, as do many other studies of bird populations. Surprisingly, this trend is reversed when three highly irruptive species are removed from the data. On a species by species basis, however, considering species with more than 9 captures, 46 species (55%) show downward trends while 37 species (45%) show increases.

## **Introduction**

I have banded birds in Aberdeen, South Dakota, since my arrival in Aberdeen in June 1979. This study covers my backyard banding activities from 1980 through 2004. I expected, both from reading scientific literature and from my field impressions, that my data would indicate population declines for most species of birds.

## **Methods and Materials**

Two banding locations were used as field stations. From January 1980 through April 1984, I banded at 1509 SE Third Ave., and from May 1985 through December 2004, banding activities took place at 1709 North Jay Street, both sites within the city of Aberdeen, South Dakota. In both locales, three 12-meter mist nets were permanently set and Potter traps were placed under bird feeders. Open water was provided at the feeders throughout the year.

I have previously described the banding stations (Tallman 1989). The highlight of the smaller Third Avenue site was a large European Mountain Ash tree. At the larger Jay Street site, a row of overgrown shrubbery, including fruiting Buckthorns, grow below a single row of Green Ash trees. As is often the case with fieldwork, my data are not controlled as rigorously as one might hope. My banding effort has been basically a maximum effort enterprise. This effort, however, varied from year to year, depending on absences from the banding station or other demands upon my time, such as personal and professional travel. It also varied daily depending upon office and class work at the university. Nevertheless, I have used the assumption that, overall, these inconsistencies have evened out over the quarter-century covered in the study.

## **Results and Discussion**

The results of my 25 years of banding are summarized in Table 1. In all, I banded 58,360 individual birds, comprising 124 species. Table 1 lists species banded, total numbers, average per year, standard deviation, and high and low

numbers per year. Overall, the data show a decline in total bird numbers during the past quarter century (Fig.1). This trend is similar to trends reported by Lloyd-Evans and Atwood (2004). Even a cursory look at Table 1 indicates that, of the top three species banded (Pine Siskin, 13,239; Dark-eyed Junco, 9,411; Common Redpoll, 5,167), two species, Pine Siskin and Common Redpoll, are notoriously irruptive. The consequence of removing the siskins and the redpolls from the list are indicated in Figure 2. Surprisingly, removing those two species from the data set, results in the overall trend in total bird populations in my study to reverse and slightly rise. The apparently unpredictable trends of siskin and redpoll occurrence are shown in Figure 3. On a species by species basis, however, considering species with more than 9 captures, 46 species (55%) show downward trends while 37 species (45%) show increases. These trends are similar to those reported by Lloyd-Evans and Atwood (2004), who found declines in 58% of fall migrants and 50% of spring migrants from 1970-2001 in a study on coastal Massachusetts. In their study, only the Carolina Wren, Tufted Titmouse, Northern Cardinal, and Black-throated Blue Warbler showed significant increases. My data also showed increases for the Black-throated Blue Warbler. A host of other species in my study, however, also showed increases (Table 3). Not included with these data is the House Sparrow. I made no consistent effort to tag this species, although over the years I banded 55 individuals.

Almost all species show widely fluctuating population numbers from year to year (note standard deviations in Table 1). Another result of these fluctuations is the low values of almost all of the R-square data, which indicate the degree of fit between the trend lines and the data. Lloyd-Evans and Atwood list some of the causes for these fluctuations, including differences in weather between years, fallouts of migrants, habitat changes at study sites, and widely varying annual nesting success.

Population trends for some species may be cause for concern. Most hole-nesting species show downward trends. These species are indicated in Table 2. The loss of elm trees could be a factor in these declines. Warbling Vireos show a pronounced decline. Here West Nile Virus (WNV) and/or subsequent widespread insecticide spraying may be at play. Warblers in the genus *Vermivora* are all down slightly. Other warblers, notably American Redstarts and Canada Warblers are clearly increasing (see Table 3). Among sparrows, 75% of 12 species showed downward trends. Despite increases in the trend lines for thrushes in general, American Robins appear to be drastically down (Fig. 5). Again, reasons for these trends may include WNV and/or spraying. I am surprised by my banding few sapsuckers and only one Eastern Wood-Pewee. Both of these species become much more common farther east in South Dakota. Because of their susceptibility to the WNV, Blue Jay populations might be expected to decline. Blue Jays, however, appear to be slightly up (Fig. 4).

	1979	1980	1981	1982	1983	1984	1985	1986	1987	1988	1989	1990	1991	1992	1993	1994	1995	1996	1997	1998	1999	2000	2001	2002	2003	2004	total	average	highest	lowest	Stdeviation		
Sharp-shinned Hawk	0	0	0	0	1	3	4	0	7	5	3	2	0	1	1	5	3	1	1	1	0	1	1	1	1	42	1.6	7	0	1.38			
Cooper's Hawk	0	0	0	0	0	0	0	0	0	0	1	1	0	0	0	0	0	0	0	0	0	1	0	1	2	6	0.2	2	0	0.51			
Broad-winged Hawk	0	0	0	0	0	0	0	0	0	2	0	0	0	0	0	0	0	6	1	0	3	0	1	0	2	15	0.6	6	0	1.36			
Merlin	0	0	0	0	0	0	0	0	1	0	0	0	0	0	0	0	0	0	0	0	0	0	0	0	0	1	0.0	1	0	0.20			
Mourning Dove	2	2	4	7	2	23	4	7	5	4	25	4	3	9	4	1	7	21	6	7	10	2	16	4	13	10	202	7.8	25	1	6.67		
Black-billed Cuckoo	0	0	0	0	0	1	0	0	0	0	1	0	0	1	0	0	0	0	0	0	0	0	0	0	0	0	3	0.1	1	0	0.33		
Eastern Screech-Owl	0	0	0	0	0	1	0	2	2	1	1	1	0	1	0	0	0	1	0	0	0	0	0	2	0	0	12	0.5	2	0	0.71		
Northern Saw-whet Owl	0	1	0	0	0	0	7	4	8	3	4	2	2	1	2	1	3	3	2	2	4	3	2	2	7	63	2.4	8	0	2.23			
Red-bellied Woodpecker	0	0	0	0	0	0	0	0	0	0	0	0	0	0	0	0	0	0	0	0	0	0	0	1	0	1	0.0	1	0	0.20			
Yellow-bellied Sapsucker	0	1	1	0	0	1	0	0	1	0	0	0	2	1	1	1	1	0	0	0	0	0	0	0	0	0	9	0.3	2	0	0.56		
Dowry Woodpecker	2	12	8	4	13	13	13	8	8	11	1	0	5	7	17	10	7	5	9	7	8	3	4	7	10	8	200	7.7	17	0	4.08		
Hairy Woodpecker	1	3	1	5	1	3	4	2	2	0	0	0	0	1	1	1	1	2	0	0	1	2	1	1	0	33	1.3	5	0	1.31			
Northern Flicker	5	7	4	6	16	9	9	6	15	6	8	8	6	6	0	7	5	3	2	0	6	5	2	6	2	2	151	5.8	16	0	3.79		
Olive-sided Flycatcher	0	0	0	0	0	1	0	0	0	0	1	0	0	0	0	0	0	1	0	0	0	0	0	0	0	0	3	0.1	1	0	0.33		
Eastern Wood-Pewee	0	0	1	0	0	0	0	0	0	0	0	0	0	0	1	0	0	0	0	0	0	0	0	0	0	0	2	0.1	1	0	0.27		
Yellow-bellied Flycatcher	1	0	1	0	1	0	0	1	1	0	1	4	1	0	3	2	3	1	3	3	0	12	15	5	6	8	72	2.8	15	0	3.79		
Trail's Flycatcher	0	8	7	25	6	12	4	2	15	3	28	0	5	8	10	10	17	19	4	11	6	24	18	36	4	6	288	11.1	36	0	9.22		
Least Flycatcher	0	0	11	55	38	9	11	17	17	5	11	32	10	7	3	13	26	48	49	12	39	30	23	28	15	43	552	21.2	55	0	16.10		
Cordilleran Flycatcher	0	0	0	0	0	0	0	0	0	0	0	0	0	1	0	0	0	0	0	0	0	0	0	0	0	0	1	0.0	1	0	0.20		
Eastern Phoebe	0	0	0	0	0	0	0	0	0	0	0	0	1	0	2	0	0	0	0	0	0	3	1	1	3	0	11	0.4	3	0	0.90		
Great Crested Flycatcher	0	0	0	0	0	0	0	0	0	0	0	0	0	1	0	0	0	0	0	1	0	0	0	0	0	0	2	0.1	1	0	0.27		
Western Kingbird	0	0	2	0	0	2	0	0	0	0	0	0	0	0	0	0	0	0	0	0	0	0	0	0	0	0	4	0.2	2	0	0.54		
Eastern Kingbird	0	0	0	0	2	0	0	0	0	0	0	0	0	0	0	0	0	0	0	0	0	0	0	0	0	0	2	0.1	2	0	0.39		
Northern Shrike	0	0	0	0	1	3	0	3	0	1	2	0	1	1	0	0	0	0	0	0	1	1	0	0	0	0	14	0.5	3	0	0.90		
White-eyed Vireo	0	0	0	0	0	0	0	0	0	0	0	0	0	0	0	0	0	0	0	0	1	0	0	0	0	0	1	0.0	1	0	0.20		
Blue-headed Vireo	0	0	1	1	5	0	0	2	2	1	0	0	0	1	0	0	3	3	1	0	1	0	1	0	6	1	3	2	33	1.3	6	0	1.61
Warbling Vireo	3	1	8	11	14	13	3	2	6	3	4	6	4	2	4	1	4	12	6	1	3	0	3	0	2	0	116	4.5	14	0	4.04		
Philadelphia Vireo	0	0	0	0	0	1	1	1	0	1	1	0	0	0	0	0	0	2	0	0	0	0	0	0	0	1	8	0.3	2	0	0.55		
Red-eyed Vireo	1	8	11	3	2	1	13	5	12	6	8	3	2	3	3	1	13	7	3	0	14	1	4	13	7	17	161	6.2	17	0	4.98		
Blue Jay	4	3	8	1	5	3	8	7	2	3	8	7	1	7	2	4	5	22	7	3	5	6	4	5	3	2	135	5.2	22	1	4.07		
American Crow	0	0	0	0	0	0	0	0	0	0	0	0	0	0	0	0	0	0	0	0	0	0	1	0	0	0	1	0.0	1	0	0.20		
Horned Lark	0	0	0	0	0	0	0	0	0	0	0	0	0	0	0	0	0	0	1	0	0	0	0	0	0	0	1	0.0	1	0	0.20		
Barn Swallow	0	0	1	0	1	0	0	0	0	0	1	0	0	0	0	0	0	0	0	0	0	0	0	0	0	0	3	0.1	1	0	0.33		
Cliff Swallow	0	0	1	0	0	0	0	0	0	0	0	0	0	0	0	0	0	0	0	0	0	0	0	0	0	0	1	0.0	1	0	0.20		
Black-capped Chickadee	4	10	20	15	22	20	50	37	36	50	50	17	27	37	45	44	56	39	32	46	35	37	41	67	27	10	874	33.6	67	4	15.68		
Red-breasted Nuthatch	0	4	5	1	4	0	19	5	2	1	13	3	0	1	25	4	60	25	27	4	32	19	12	15	6	16	303	11.7	60	0	13.79		
White-breasted Nuthatch	1	4	14	4	7	8	17	9	8	8	11	7	5	2	7	1	2	1	0	3	6	3	5	8	3	6	150	5.8	17	0	4.08		
Brown Creeper	3	9	1	3	6	7	3	13	6	6	17	4	6	6	8	2	17	8	5	11	8	7	10	11	10	13	200	7.7	17	1	4.21		
Carolina Wren	0	0	0	0	0	0	0	0	0	0	0	0	0	0	0	0	0	0	0	0	0	0	0	0	0	1	0	0	1	0	0.20		
House Wren	11	19	56	17	18	5	29	15	15	7	22	19	18	22	1	5	23	31	25	24	38	15	16	24	10	8	493	19.0	56	1	11.46		
Winter Wren	0	0	1	0	0	0	0	0	0	0	0	0	0	0	1	0	0	0	1	0	2	0	0	0	1	7	0.3	2	0	0.53			
Marsh Wren	0	0	0	0	0	2	2	0	0	0	0	0	0	0	0	0	0	0	0	0	1	1	0	0	0	6	0.2	2	0	0.59			
Golden-crowned Kinglet	5	11	3	9	19	2	5	26	5	12	31	23	14	3	19	9	15	4	6	28	20	57	5	9	15	24	379	14.6	57	2	12.17		
Ruby-crowned Kinglet	1	17	32	17	22	36	24	28	39	22	20	51	42	26	47	17	57	33	23	49	81	44	17	39	55	34	873	33.6	81	1	16.89		
Veery	0	0	0	1	0	2	1	1	1	1	1	0	1	1	0	2	3	2	4	0	1	3	5	1	7	0	38	1.5	7	0	1.73		
Gray-cheeked Thrush	0	6	5	11	16	6	5	11	8	11	8	0	2	4	0	10	13	7	11	9	7	13	11	6	13	4	197	7.6	16	0	4.37		
Swainson's Thrush	3	22	28	27	60	50	60	46	84	61	86	59	57	31	36	65	83	104	118	124	54	151	101	134	107	206	1957	75.3	206	3	45.90		
Hermit Thrush	1	2	0	9	5	7	1	0	7	4	3	5	15	6	1	3	5	6	5	8	17	7	7	14	6	12	156	6.0	17	0	4.51		
Wood Thrush	0	0	0	0	0	0	0	0	0	0	0	0	0	0	0	0	0	0	0	0	1	0	0	0	0	0	1	0.0	1	0	0.20		
American Robin	102	84	118	135	240	154	241	192	189	121	111	70	127	87	86	97	71	61	99	102	53	53	65	65	68	41	2832	108.9	241	41	54.71		
Gray Catbird	6	6	9	6	7	17	27	8	4	1	12	1	6	4	8	13	14	30	11	20	16	23	19	9	11	16	304	11.7	30	1	7.57		
Brown Thrasher	3	7	14	7	13	3	18	16	10	11	12	11	6	3	6	4	10	5	7	8	17	3	4	24	5	0	227	8.7	24	0	5.71		

	1979	1980	1981	1982	1983	1984	1985	1986	1987	1988	1989	1990	1991	1992	1993	1994	1995	1996	1997	1998	1999	2000	2001	2002	2003	2004	total	average	highest	lowest	Stdeviation	
European Starling	2	4	3	4	7	1	5	2	4	4	4	1	4	3	0	2	0	2	0	0	0	0	1	3	1	0	57	2.2	7	0	1.92	
Bohemian Waxwing	0	1	0	0	1	0	0	1	11	0	0	0	3	0	0	0	0	0	0	0	0	0	0	0	0	0	17	0.7	11	0	2.21	
Cedar Waxwing	38	47	30	115	132	29	12	57	5	8	6	7	6	15	2	2	3	13	3	5	0	2	1	11	11	0	560	21.5	132	0	33.63	
Golden-winged Warbler	0	0	0	0	0	0	0	0	1	0	0	0	0	0	0	1	1	0	0	0	0	0	1	0	1	5	0.2	1	0	0.40		
Tennessee Warbler	0	1	39	21	8	5	17	0	13	2	5	4	2	8	5	3	5	5	15	7	3	9	8	19	5	12	221	8.5	39	0	8.45	
Orange-crowned Warbler	23	89	91	29	76	45	35	74	16	54	42	33	20	20	0	76	80	47	81	52	52	64	59	45	45	61	1309	50.3	91	0	24.25	
Nashville Warbler	0	0	13	3	12	9	7	3	2	4	0	3	2	0	2	6	2	3	9	2	9	2	4	1	3	4	104	4.0	13	0	3.69	
Yellow Warbler	12	2	11	13	29	10	7	6	13	5	9	6	1	5	2	6	7	26	11	3	6	2	2	5	1	2	202	7.8	29	1	6.93	
Chestnut-sided Warbler	0	0	0	0	1	2	0	1	0	2	0	0	0	0	0	2	3	4	2	1	5	2	0	0	4	2	29	1.1	5	0	1.51	
Magnolia Warbler	0	0	6	2	3	1	5	0	2	1	1	0	1	3	0	0	1	2	7	12	18	17	14	4	5	11	116	4.5	18	0	5.45	
Black-throated Blue Warbler	0	1	0	0	0	0	0	0	0	0	0	0	1	1	3	2	0	1	0	2	1	1	2	1	1	1	18	0.7	3	0	0.84	
Yellow-rumped Warbler	11	15	17	35	87	19	13	37	18	43	39	7	13	22	24	17	9	7	12	6	8	8	12	28	11	10	528	20.3	87	6	17.27	
Audubon's Warbler	0	0	0	0	1	0	0	0	0	0	0	0	0	0	0	0	0	0	0	0	0	0	0	0	1	2	0.1	1	0	0.27		
Black-throated Green Warbler	0	1	0	0	0	0	0	0	0	1	0	0	1	0	0	0	0	0	0	1	0	0	1	0	0	0	5	0.2	1	0	0.40	
Townsend's Warbler	0	0	0	0	0	0	0	0	0	0	0	0	0	0	0	0	0	0	0	0	0	0	0	0	0	0	1	0.0	1	0	0.20	
Blackburnian Warbler	1	0	1	1	0	0	0	0	0	0	0	0	0	0	0	0	0	0	0	0	0	0	0	0	0	0	3	0.1	1	0	0.33	
Palm Warbler	1	2	0	0	3	0	0	2	1	1	0	0	0	0	0	1	0	0	0	0	0	0	0	1	0	0	12	0.5	3	0	0.81	
Bay-breasted Warbler	0	0	1	0	0	4	0	2	1	0	1	0	0	0	2	0	1	0	0	0	1	0	2	0	0	1	16	0.6	4	0	0.98	
Blackpoll Warbler	0	0	3	4	5	2	5	1	11	0	4	0	1	1	2	1	2	4	6	1	3	0	5	3	0	2	66	2.6	11	0	2.53	
Black-and-white Warbler	0	3	1	7	38	3	17	9	5	5	3	3	4	6	3	6	16	21	21	8	54	5	17	17	40	24	336	12.9	54	0	13.57	
American Redstart	0	4	5	4	3	2	4	2	5	3	9	11	4	6	5	5	17	16	17	19	11	19	19	12	7	13	222	8.5	19	0	6.11	
Worm-eating Warbler	0	0	0	1	0	0	0	0	0	1	0	0	0	0	0	0	0	0	0	0	0	0	0	0	0	0	2	0.1	1	0	0.27	
Ovenbird	0	17	10	24	11	12	17	8	11	13	11	6	6	5	9	12	26	36	52	33	180	52	39	43	54	43	730	28.1	180	0	35.11	
Northern Waterthrush	0	0	6	4	8	2	11	6	0	0	3	1	0	0	3	2	14	16	6	9	54	4	2	10	8	9	178	6.8	54	0	10.64	
Connecticut Warbler	0	0	0	2	0	0	1	0	0	2	1	0	0	1	0	0	1	1	2	9	0	0	4	0	0	1	25	1.0	9	0	1.91	
Mourning Warbler	1	1	5	15	7	7	21	3	2	5	12	8	6	9	10	9	10	28	17	13	13	31	15	13	2	4	267	10.3	31	1	7.69	
MacGillivray's Warbler	1	0	0	1	2	1	1	0	0	0	1	0	0	0	3	0	1	0	1	0	1	1	2	1	0	1	18	0.7	3	0	0.79	
Common Yellowthroat	1	1	29	15	2	0	6	9	4	2	10	3	3	2	1	3	9	9	11	4	4	3	3	1	1	5	141	5.4	29	0	6.12	
Hooded Warbler	0	0	0	0	0	0	0	0	0	0	0	0	0	0	0	0	0	0	0	0	0	0	0	1	1	0	2	0.1	1	0	0.27	
Wilson's Warbler	3	16	30	9	3	7	20	4	7	17	0	0	19	15	5	4	18	7	4	14	13	12	8	6	6	10	257	9.9	30	0	7.15	
Canada Warbler	0	0	1	2	0	0	1	0	0	0	1	1	1	1	1	2	7	2	4	8	6	11	11	0	4	4	68	2.6	11	0	3.35	
Yellow-breasted Chat	0	0	1	0	1	2	0	1	1	0	0	0	0	0	0	1	0	0	1	1	0	0	1	2	2	0	14	0.5	2	0	0.71	
Summer Tanager	0	0	0	1	0	1	0	0	0	0	0	0	0	0	0	0	0	0	0	0	0	0	0	0	0	0	2	0.1	1	0	0.27	
Scarlet Tanager	0	0	0	0	0	0	0	0	1	0	0	0	0	0	0	0	0	0	0	0	0	0	0	0	0	0	2	0.1	1	0	0.27	
Spotted Towhee	0	0	2	2	0	1	2	0	1	1	3	1	1	0	0	0	1	4	8	1	1	1	1	0	0	3	2	36	1.4	8	0	1.72
Eastern Towhee	0	0	0	0	1	0	0	0	0	0	0	0	0	0	0	0	0	0	0	0	0	0	0	0	1	0	2	0.1	1	0	0.27	
American Tree Sparrow	2	15	9	44	19	17	28	24	29	9	8	1	18	3	1	10	24	255	23	2	0	29	0	4	1	2	577	22.2	255	0	48.94	
Chipping Sparrow	4	3	111	111	106	112	19	30	2	6	5	4	2	9	10	7	10	22	17	13	22	15	20	25	25	45	755	29.0	112	2	36.62	
Clay-colored Sparrow	0	3	18	17	6	15	10	19	0	2	3	0	2	3	0	2	22	8	0	1	5	12	6	2	0	156	6.0	22	0	6.92		
Field Sparrow	0	0	2	0	3	12	2	1	0	0	0	0	1	0	0	0	3	0	0	0	1	0	0	0	0	0	25	1.1	12	0	2.44	
Fox Sparrow	0	0	2	3	4	2	3	0	0	2	0	0	0	1	3	0	4	14	3	10	5	4	0	0	2	3	65	2.5	14	0	3.28	
Song Sparrow	0	2	3	2	1	0	2	5	4	1	1	0	5	4	2	0	6	2	7	3	1	0	1	1	0	1	54	2.1	7	0	2.00	
Lincoln's Sparrow	2	13	68	48	64	32	25	30	8	14	15	20	4	3	4	12	13	27	16	10	19	19	10	23	39	15	553	21.3	68	2	17.21	
Swamp Sparrow	0	0	0	0	0	0	1	0	0	1	3	0	2	0	2	0	0	0	0	1	0	0	0	0	0	0	10	0.4	3	0	0.80	
White-throated Sparrow	8	29	29	29	46	84	53	31	58	21	52	40	32	21	45	92	116	44	56	23	59	49	81	53	156	25	1332	51.2	156	8	32.63	
Harris's Sparrow	10	46	53	24	162	77	43	18	17	3	18	5	4	3	8	3	2	10	4	3	2	6	1	6	14	0	542	20.8	162	0	34.52	
White-crowned Sparrow	0	0	4	8	18	26	11	7	28	0	0	1	7	0	2	3	1	2	5	3	0	1	0	1	2	11	1	142	5.5	28	0	7.72
Dark-eyed Junco	54	172	94	344	329	193	115	288	385	278	497	147	626	342	467	605	822	712	422	298	412	583	241	317	491	231	9465	364.0	822	54	195.44	
Northern Cardinal	0	0	0	0	0	0	4	0	0	0	0	0	1	0	0	0	0	1	0	0	0	1	1	0	0	0	8	0.3	4	0	0.84	
Rose-breasted Grosbeak	0	0	5	1	2	1	2	1	1	2	0	1	0	1	1	4	5	1	0	2	2	1	1	0	0	2	1	37	1.4	5	0	1.39
Black-headed Grosbeak	0	0	0	0	0	0	0	0	0	0	0	0	0	0	1	0	0	0	0	0	0	0	0	0	0	0	1	0.0	1	0	0.20	
Lazuli Bunting	0	0	0	0	0	2	0	0	0	0	0	0	0	0	2	0	0	0	1	0	0	0	0	0	0	0	3	8	0.3	3	0	0.79



	1979	1980	1981	1982	1983	1984	1985	1986	1987	1988	1989	1990	1991	1992	1993	1994	1995	1996	1997	1998	1999	2000	2001	2002	2003	2004	total	average	highest	lowest	Stdeviation
Indigo Bunting	0	0	0	0	0	1	0	0	0	0	0	0	0	0	0	0	0	0	0	0	0	0	0	0	0	0	1	0.0	1	0	0.20
Red-winged Blackbird	0	0	23	19	11	23	13	2	10	3	5	0	0	0	0	1	0	1	0	2	1	1	11	3	1	0	130	5.0	23	0	7.31
Yellow-headed Blackbird	4	0	0	0	0	0	0	0	0	0	0	0	0	0	0	3	3	0	6	1	0	0	0	0	0	0	17	0.7	6	0	1.55
Rusty Blackbird	0	0	0	0	0	0	0	0	0	0	0	0	0	0	1	0	0	0	0	0	0	0	0	0	0	0	1	0.0	1	0	0.20
Common Grackle	24	74	138	89	49	66	135	76	104	55	179	45	24	62	34	32	32	61	24	61	30	38	78	137	26	14	1687	64.9	179	14	42.86
Brown-headed Cowbird	1	1	4	3	4	4	4	4	0	0	2	3	1	0	0	0	2	1	1	0	2	0	1	0	0	0	38	1.5	4	0	1.56
Orchard Oriole	0	0	0	1	3	9	1	0	0	5	0	0	0	0	0	0	1	0	0	0	0	0	0	4	0	4	28	1.1	9	0	2.19
Baltimore Oriole	3	8	3	7	5	20	5	0	1	0	1	0	1	1	1	0	1	0	0	0	0	0	0	0	0	0	57	2.2	20	0	4.30
Pine Grosbeak	0	0	0	0	0	0	0	0	1	0	0	0	0	0	0	0	0	0	0	0	0	0	0	0	0	1	2	0.1	1	0	0.27
Purple Finch	2	35	21	240	79	39	34	55	21	26	4	36	18	6	25	43	9	16	4	1	26	133	6	9	21	8	917	35.3	240	1	50.39
House Finch	0	0	0	0	0	0	1	0	0	0	0	4	13	128	121	447	499	542	110	33	267	169	162	241	101	118	2956	113.7	542	0	162.38
Red Crossbill	0	0	0	0	0	0	16	16	11	1	0	0	25	0	0	0	0	1	1	0	0	0	0	0	0	0	71	2.7	25	0	6.53
White-winged Crossbill	0	0	0	0	0	0	0	0	0	0	0	8	4	0	0	0	0	0	1	0	1	0	0	1	0	0	15	0.6	8	0	1.72
Common Redpoll	0	1	28	1023	0	2	1	330	101	357	10	15	123	1128	9	1236	5	712	10	28	7	38	0	3	0	0	5167	198.7	1236	0	379.05
Hoary Redpoll	0	0	0	2	0	0	1	2	0	0	0	0	0	0	6	0	5	0	1	0	0	0	0	0	0	0	17	0.7	6	0	1.55
Pine Siskin	0	151	870	444	134	1824	944	440	682	677	242	588	118	648	2179	453	339	182	596	177	741	275	84	19	1	431	13239	509.2	2179	0	518.95
American Goldfinch	80	373	359	268	491	134	31	377	66	38	132	44	57	228	81	181	178	26	57	47	66	330	84	119	77	34	3958	152.2	491	26	133.41
Evening Grosbeak	0	1	1	0	4	0	1	1	1	0	0	0	0	0	0	0	0	0	0	0	0	0	0	0	0	0	9	0.3	4	0	0.85
House Sparrow	2	0	0	0	0	0	0	0	0	0	4	1	0	0	1	0	3	14	5	1	2	5	4	9	3	3	57	2.2	14	0	3.30
	449	1383	2530	3431	2532	3256	2288	2488	2144	2051	1863	1406	1545	3018	3429	3621	2842	3439	2138	1421	2587	2480	1457	1751	1600	1668	58817	2262.2	3621	449	803.82

Figure 1. Total number of individual birds banded per year, 1980-2004 in Aberdeen, South Dakota. The data trend and R2 value are also indicated.

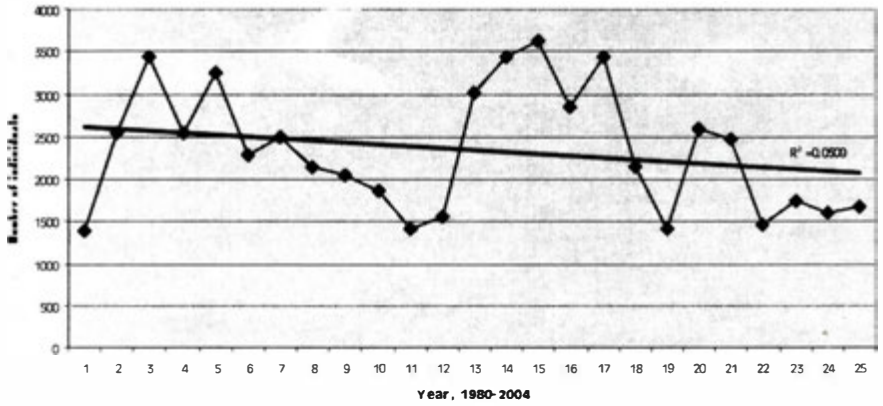


Figure 2. Total number of individual birds banded per year, 1980-2004, with Pine Siskins and Common Redpolls excluded.

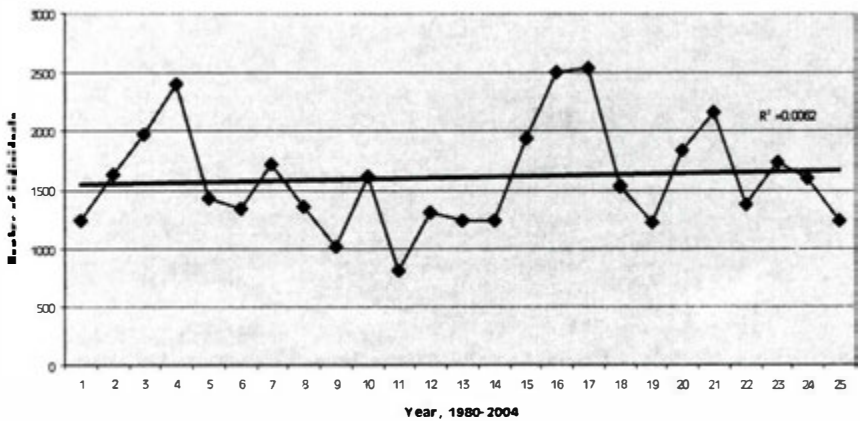
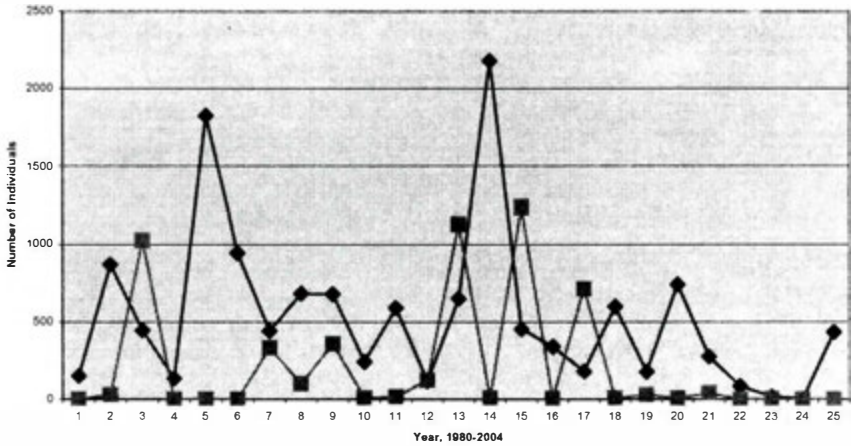


Figure 3. Pine Siskins (Squares) and Common Redpolls (diamonds) banded 1980-2004.



Species showing notable population increases include the House Finch (Fig. 7), Yellow-bellied Flycatcher, and several other small flycatchers. The finch invasion of South Dakota is a matter of record. The flycatchers may be responding to recent widespread Boreal fires, with resultant abundance of secondary growth for breeding. Overall, American Tree Sparrow numbers have been steady, despite a bizarre peak of 255 birds in 1996 (Fig. 6); a similar anomalous peak of 180 individuals occurred in 1999 for ovenbirds.

Table 2. Species showing downward population trends (R2 values in parentheses). Hole-nesting species are indicated with an asterisk.

Sharp-shinned Hawk, (0.0018)	*Eastern Screech-Owl, (0.0016)
*Downy Woodpecker, (0.0562)	*Hairy Woodpecker (0.2282)
*Northern Flicker (0.3273)	Northern Shrike (0.0843)
Warbling Vireo (0.2606)	*White-breasted Nuthatch (0.2171)
*House Wren (0.0194)	American Robin (0.4760)
Brown Thrasher (0.0426)	*European Starling (0.4462)
Bohemian Waxing (0.0456)	Cedar Waxwing (0.3595)
Tennessee Warbler (0.0311)	Orange-crowned Warbler (0.0027)
Nashville Warbler (0.0797)	Yellow Warbler (0.1335)
Yellow-rumped Warbler (0.2086)	Palm Warbler (0.1771)
Bay-breasted Warbler (0.0143)	Blackpoll Warbler (0.0186)
Common Yellowthroat ((0.1046)	Wilson's Warbler (0.0480)
American Tree Sparrow (0.00003)	Chipping Sparrow (0.1789)
Clay-colored Sparrow (0.1116)	Field Sparrow (0.1169)
Song Sparrow (0.0149)	Lincoln's Sparrow (0.1659)
Swamp Sparrow (0.0094)	Harris' Sparrow (0.3435)

White-crowned Sparrow (0.2278)  
Red-winged Blackbird (0.3155)  
Brown-headed Cowbird (0.4183)  
Baltimore Oriole (0.3287)  
Red Crossbill (0.0582)  
Common Redpoll (0.0165)  
Pine Siskin (0.0843)

Rose-breasted Grosbeak (0.0073)  
Common Grackle (0.1665)  
Orchard Oriole (0.0131)  
Purple Finch (0.1117)  
White-winged Crossbill (0.0010)  
Hoary Redpoll (0.0081)  
American Goldfinch (0.2582)

Table 3. Species showing upward trends (R2 values in parentheses).

Broad-winged Hawk (0.1295)  
Northern Saw-whet Owl (0.0952)  
Traill's Flycatcher (0.0409)  
Eastern Phoebe (0.1817)  
Red-eyed Vireo (0.0022)  
Black-capped Chickadee (0.1135)  
Brown Creeper (0.1506)  
Ruby-crowned Kinglet (0.1940)  
Gray-cheeked Thrush (0.0064)  
Hermit Thrush (0.2553)  
Chestnut-sided Warbler (0.2348)  
Black-throated Blue Warbler (0.2667)  
American Redstart (0.5269)  
Northern Waterthrush (0.1005)  
Mourning Warbler (0.0967)  
Canada Warbler (0.4070)  
Fox Sparrow (0.0559)  
Dark-eyed Junco (0.1503)  
House Finch (0.2686)

Mourning Dove (0.0229)  
Yellow-bellied Flycatcher (0.4442)  
Least Flycatcher (0.0862)  
Blue-headed Vireo (0.0466)  
Blue Jay (0.0017)  
Red-breasted Nuthatch (0.1644)  
Golden-crowned Kinglet (0.0822)  
Veery (0.2460)  
Swainson's Thrush (0.8008)  
Gray Catbird (0.1407)  
Magnolia Warbler (0.3330)  
Black-and-white Warbler (0.1912)  
Ovenbird (0.2635)  
Connecticut Warbler (0.0561)  
MacGillivray's Warbler (0.0199)  
Yellow-breasted Chat (0.0183)  
White-throated Sparrow (0.1258)  
Yellow-headed Blackbird (0.0415)

Table 4. Species with fewer than 10 captures.

Cooper's Hawk (6)  
Black-billed Cuckoo (3)  
Yellow-bellied Sapsucker (9)  
Eastern Wood-Pewee (1)  
Great Crested Flycatcher (2)  
Eastern Kingbird (2)  
Philadelphia Vireo (8)  
Horned Lark (1)  
Cliff Swallow (1)  
Winter Wren (7)  
Wood Thrush (1)  
Audubon's Warbler (2)  
Townsend's Warbler (1)  
Worm-eating Warbler (2)  
Summer Tanager (2)  
Eastern Towhee (2)  
Black-headed Grosbeak (1)  
Indigo Bunting (1)  
Pine Grosbeak (2)

Merlin (1)  
Red-bellied Woodpecker (1)  
Olive-sided Flycatcher (3)  
Cordilleran Flycatcher (1)  
Western Kingbird (4)  
White-eyed Vireo (1)  
American Crow (1)  
Barn Swallow (3)  
Carolina Wren (1)  
Marsh Wren (6)  
Golden-winged Warbler (5)  
Black-throated Green Warbler (5)  
Blackburnian Warbler (2)  
Hooded Warbler (2)  
Scarlet Tanager (2)  
Northern Cardinal (8)  
Lazuli Bunting (8)  
Rusty Blackbird (1)  
Evening Grosbeak (9)

Figure 4. Blue Jay (diamonds) and Black-capped Chickadee (squares) trends.

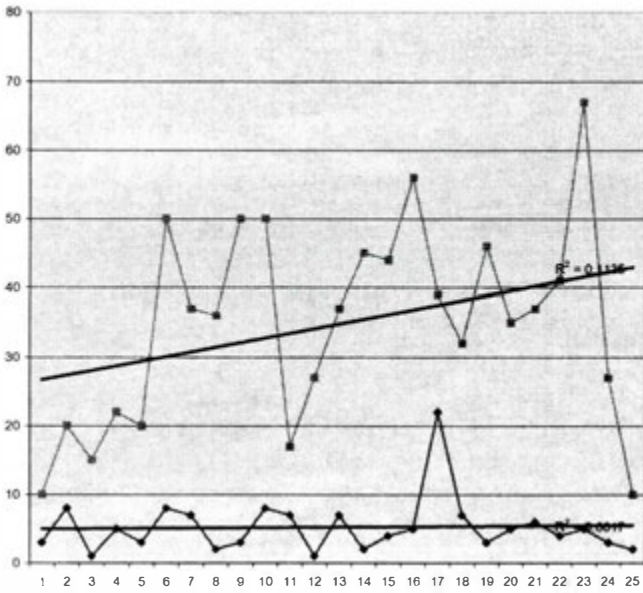


Figure 5. American Robin banding totals, 1980-2004.

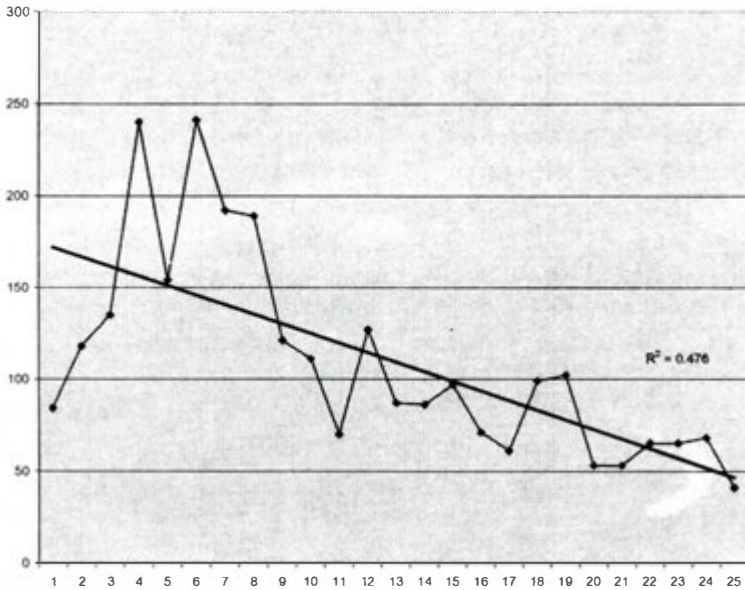


Figure 6. Species with odd peaks: American Tree Sparrow (diamonds) and Ovenbird (squares) banding, 1980-2004.

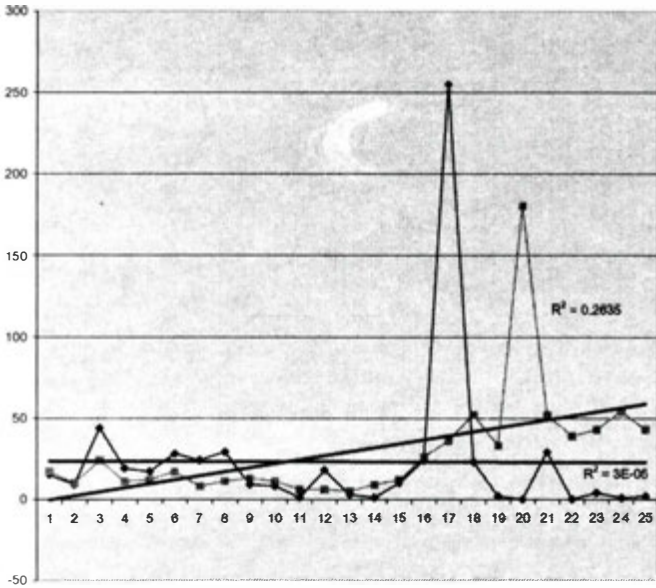
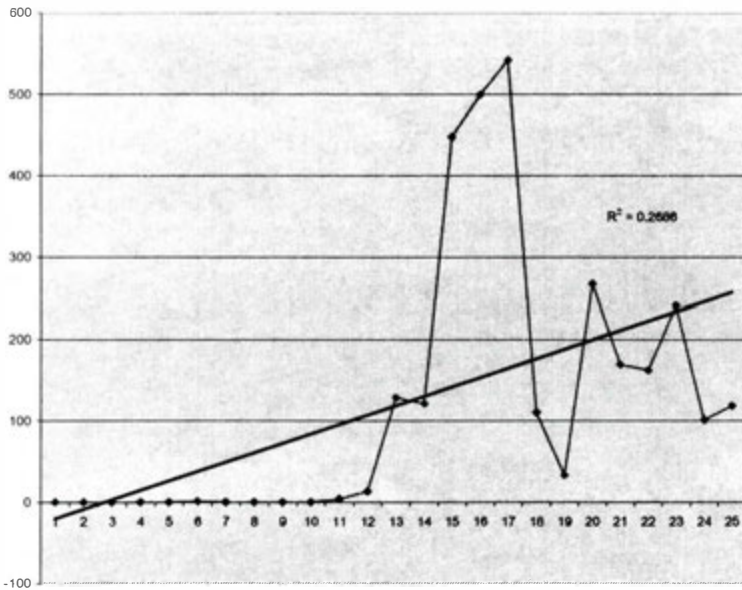


Figure 7. House Finch banding totals, 1980-2004.



## Literature Cited

- Lloyd-Evans, Trevor L. and Jonathan L. Atwood. 2004. 32 Years of Changes in Passerine Numbers During Spring and Fall Migrations in Coastal Massachusetts. *The Wilson Bulletin* 116:1-16.
- Tallman, Dan. 1989. Siskin and Other Banding at Two Locations in Aberdeen, South Dakota, 1983-1987. *SDBN* 41:4-9.



# *GENERAL NOTES*

**A POSSIBLE HYBRID SCARLET/WESTERN Tanager FROM THE SLIM BUTTES IN HARDING COUNTY.** The Great Plains is well known as a zone of hybridization for closely related species that have been separated into western and eastern populations due to glaciation and other long-term climatic events. Rose-breasted/Black-headed Grosbeak, Indigo/Lazuli Bunting, Eastern /Spotted Towhee, and Baltimore/Bullock's Oriole are examples of eastern and western species that hybridize in the Great Plains. Hybrids of these species are commonly seen in some areas of South Dakota (Tallman et al. 2002).

The Scarlet Tanager and the Western Tanager were once thought to be closely related eastern and western species. However, cytochrome b sequence data show that the Western Tanager is actually more closely related to the Flame-colored Tanager (Hudson 1999). Hybrids of those two species are known in Arizona (Hudson 1999).

Hybrid Scarlet Tanager and Western Tanager appear to be rare. Only two are reported in the available literature. One hybrid was reported from Kentucky (Mengel 1963) and another from Minnesota (Tordoff 1950).

While birding in the Slim Buttes, Custer National Forest, Harding County, South Dakota, we observed a possible hybrid of a Western Tanager and Scarlet Tanager. The exact location of the observation was in Deer Draw, 45.37864N 103.16981W. The date was 30 May 2005. The bird was a singing male that lacked the red head coloration of a typical Western Tanager, although there was a tinge of red under its bill. The interscapular area of the back indicated a dark patch resembling the diagnostic black patch of a Western Tanager, but it was not solid black. Instead, the patch was mixed with yellow, thus appearing a dull grayish-yellow. The diagnostic white wingbar of the Western Tanager was not present. The wing was black except for faint white tips on the secondaries and a yellow patch on the upper wing coverts. Western Tanagers have white-tipped tail feathers. On this bird the tail was entirely black. The overall plumage of the tanager was a brilliant golden-orange, noticeably different from the normal bright yellow of the Western Tanager.

Peterson (1995) suggested the possibility that the forested buttes of Harding County could produce hybrids of these species. He observed a male Scarlet Tanager chasing a male Western Tanager in the nearby South Cave Hills during the South Dakota Breeding Bird Atlas project.

Our observations appear to be the first report of possible hybridization between the Scarlet Tanager and the Western Tanager within the range of the Western Tanager. Birders should be on the alert for more possible hybrids in this area and possibly in the Black Hills area as well. Photos of the possible hybrid can be seen on the back cover of this issue of Bird Notes.

### Literature Cited

- Hudson, J. 1999. Western Tanager (*Piranga ludoviciana*). In *The Birds of North America*, No. 432. (A. Poole and F. Gill, eds.). The Birds of North America, Inc., Philadelphia, PA.
- Mengel, R. M. 1963. A Second Probable Hybrid Between the Scarlet and Western Tanagers. *Wilson Bulletin* 75(2): 201-203.
- Peterson, R. A. 1995. *The South Dakota Breeding Bird Atlas*. South Dakota Ornithologist's Union.
- Tallman, D., D. L. Swanson, and J. S. Palmer. 2002. *The Birds of South Dakota*. 3rd ed. South Dakota Ornithologist's Union. Midstates Printing, Aberdeen, SD
- Tordoff, H.B. 1950. A Hybrid Tanager from Minnesota. *Wilson Bull* 62(1): 3-4. *Doug Backlund, 114 S. Poplar, Pierre, SD 57501 and Charlene Bessken, 428 S. Pierce, Pierre, SD 57501.*

**MAGNIFICENT HUMMINGIBRD—FIRST RECORD FOR SOUTH DAKOTA.** My 14 year old son, Jacob, said rather nonchalantly, "Hummingbird, Dad." I paid little attention because we had a female Broad-tailed Hummingbird visiting our feeder outside the kitchen window regularly for the past three weeks. In about a second he added, "BIG hummingbird!" This was 18 June 2005 at my home in Sturgis, SD. I whipped my head around and took my first look at the bird from 12 feet away through the window screen. It was a large hummer with a long tail and a white line behind the eye. While the bird hovered back and forth at my hummingbird feeder, I scrambled for field guides, video camera, tripod, etc. I quickly narrowed the identification down to either a Blue-throated or a Magnificent Hummingbird because of the bird's large size and white line. On closer observation, I noticed a smaller indistinct white line in the moustache area. Now I thought it was a Blue-throated. I changed feeders to one with a perch and the bird obliged and kept coming all evening. As I observed the bird from different angles (I repositioned the feeder and taped shut the other feed port) the field marks started adding up. The bill was all black, and I thought it looked long (the video later showed this to be true). The top of the bird was the same shade of green from the fore crown to the upper tail coverts. The throat was dirty white with small dark smudges. The breast was also dirty whitish-gray, with larger dark smudges that gave it a scaly appearance. From the front and underneath of the perched bird, I saw a small white tip on the outside tail feathers. This beautiful bird was a female Magnificent Hummingbird. Most of my observations came from 3 to 4 feet from the bird. For most of the evening I had the video camera on a tripod on the deck about 8 feet away. When the sun got low I tried for some



handheld video from a chair in the yard about 15 feet from the feeder. When the hummingbird returned, she stopped about 3 feet from the feeder, noticed something out of place (me!), came back within about 6 feet of me, looked me over, then proceeded back to the feeder for another sip. This was truly an enjoyable experience and truly a BIG hummingbird. This sighting is pending review by the South Dakota Rare Birds Committee. *Randy Podoll 1209 Pineview Rd. Sturgis, SD 57785*



## SEASONAL REPORTS

### The 2005 Spring Season

1 March 2005 to 31 May 2005

Compiled By: Jeffrey S. Palmer

College of Arts & Sciences

Dakota State University

Madison, SD 57042

There were 331 species, including 21 rarities, reported during the season. This is two more than the previous record set just last year! The ten-year (1995-2004) average is 314. Below, I have tried to highlight the more significant sightings (dates that are earlier/later than listed in *South Dakota Birds* by Tallman, Swanson, and Palmer and species that are out of range). For early/late migration dates, I have listed the three earliest/latest dates (by county); however, if these did not include a sighting East River, West River, and along the Missouri River, I have given the earliest/latest reported date in the missing region also. Finally, included at the end is a list of species (11) that were not reported this year and might be expected during the Spring Season. A species is placed on the list if it was not reported this year but had been reported during spring in at least 2 of the previous 5 years. Numbers in parentheses indicates the number of consecutive years (up to 4) that the species has appeared on the list during the season.

**Greater White-fronted Goose** Early: 1 Mar McPherson JCS; 3 Mar McCook DC; 3 Mar Minnehaha DC; 3 Mar Charles Mix RM ... Late: 16 May Sanborn JC; 30 Apr Minnehaha RFS, JSP; 9 Apr Lake JSP

**Snow Goose** Early: 1 Mar Beadle BFW; 1 Mar Charles Mix RM; 1 Mar McPherson JCS ... Late: 30 May Minnehaha DC; 30 May Kingsbury KCJ; 28 May Miner JSP; 16 Apr Hughes KM; 16 Apr Charles Mix RM

**Ross's Goose** Early: 1 Mar McPherson JCS; 5 Mar Lake JSP; 5 Mar Minnehaha RFS; 5 Mar Clay DS; 5 Mar Charles Mix RM; 14 May Pennington JLB ... Late: **16 May Sanborn JC**; 1 May Minnehaha DC; 9 Apr Clay DS; 9 Apr Lake JSP

**Cackling Goose** Early: 1 Mar Hughes RDO; 1 Mar Charles Mix RM; 3 Mar Minnehaha DC; 12 Mar Lawrence APB ... Late: 13 May Charles Mix RM; 17 Apr Minnehaha MRZ; 5 Apr Yankton DC

**Trumpeter Swan** All Reports: 28 Apr Harding CEM; 30 May Harding CEM, KM

**Tundra Swan** All Reports: 24 Mar Minnehaha KCJ; 5 Apr Marshall WS

**Wood Duck** Early: 1 Mar Pennington JLB; 3 Mar Turner DC; 5 Mar Lincoln DC; 8 Mar Hughes RDO

**Gadwall** Early: 1 Mar Pennington JLB; 1 Mar Stanley RDO; 1 Mar McPherson JCS

**American Wigeon** Early: 1 Mar Pennington JLB; 5 Mar Lake JSP; 5 Mar Minnehaha RFS; 5 Mar Charles Mix RM

**Mallard** Confirmed Breeding: 26 Apr Beadle (NE) BFW

**Blue-winged Teal** Early: 20 Mar Charles Mix RM; 25 Mar Clay DS; 1 Apr Stanley KM; 2 Apr McCook JSP; 2 Apr Minnehaha DC; 5 Apr Meade AKB

**Cinnamon Teal** Early: 9 Apr Lake JSP; 14 Apr Charles Mix RM; 16 Apr Hughes KM; 26 May Meade JLB, AKB ... Late: 28 May Pennington JLB; 16 May Brule JC; 8 May Hughes KM

**Northern Shoveler** Early: 5 Mar Lake JSP; 12 Mar Butte JLB; 12 Mar Stanley KM, RDO

**Northern Pintail** Early: 1 Mar Stanley RDO; 1 Mar McPherson JCS; 2 Mar Butte JLB  
**Green-winged Teal** Early: 3 Mar Stanley RDO; 5 Mar Lake JSP; 11 Mar Fall River JSP  
**Canvasback** Early: 1 Mar Hughes RDO; 1 Mar McPherson JCS; 2 Mar Butte JLB  
**Redhead** Early: 1 Mar Hughes RDO; 1 Mar McPherson JCS; 1 Mar Charles Mix RM; 4 Mar Meade AKB  
**Ring-necked Duck** Early: 1 Mar Hughes RDO; 1 Mar McPherson JCS; 3 Mar McCook DC; 15 Mar Meade EEM  
**Greater Scaup** Early: 3 Mar Hughes RDO; 5 Mar Charles Mix RM; 12 Mar Stanley KM; 17 Mar Minnehaha DC ... Late: **30 Apr Minnehaha DC**; 13 Mar Stanley DB; 13 Mar Hughes KM  
**Lesser Scaup** Early: 1 Mar McPherson JCS; 1 Mar Charles Mix RM; 3 Mar Hughes RDO; 15 Mar Meade EEM  
**Bufflehead** Early: 1 Mar Pennington JLB; 3 Mar Hughes RDO; 3 Mar Charles Mix RM; 5 Mar Lake JSP ... Late: 14 May Pennington JLB; 13 May Harding CEM; 12 May Minnehaha DC; 29 Apr Sully KM  
**Common Goldeneye** Late: 13 May Harding CEM; 13 Apr Hughes KM; 9 Apr Lake JSP  
**Hooded Merganser** Early: 1 Mar Hughes RDO; 1 Mar McPherson JCS; 5 Mar Minnehaha RFS; 21 Mar Butte JLB ... Late: 28 May Miner JSP; 26 May Meade AKB; 10 May Moody DC; 17 Apr Hughes KM  
**Common Merganser** Late: 3 May Harding CEM; 28 Apr Hughes KM; 28 Apr Charles Mix DC; 23 Apr Minnehaha DC ... Confirmed Breeding: **13 May Pennington (PY) RC**  
**Red-breasted Merganser** Early: 1 Mar Hughes KM, RDO; 12 Mar Yankton BFH; 23 Mar Charles Mix RM; 25 Mar Minnehaha DC ... Late: 16 May Hughes RDO, KM; 15 May Yankton DS; 15 May Stanley KM; 9 Apr Lake JSP  
**Ruddy Duck** Early: 5 Mar Lake JSP; 15 Mar Miner JCS; 17 Mar Minnehaha DC; 26 Mar Charles Mix RM; 17 Apr Harding CEM  
**Gray Partridge** reported from Brookings, Clay, Custer, Harding, Lake, Lincoln, Meade, Minnehaha, Miner, and Sully counties  
**Ruffed Grouse** All Reports: 17 Mar Lawrence DGP; 25 Mar Custer AKB; 6 Apr Lawrence DGP; 29 Apr Pennington RDO; 20 May Pennington DGP  
**Greater Sage-Grouse** All Reports: 2 Mar Butte JLB; 5 Mar Butte AKB; 12 Mar Butte JLB, RDO; 23 Apr Harding CEM, KM; 2 May Butte JLB; 14 May Harding CEM  
**Sharp-tailed Grouse** reported 30 Mar Marshall PEL; 2 Mar McPherson JCS  
**Greater Prairie-Chicken** reported from Beadle, Hand, Jones, Lyman, and Stanley counties  
**Northern Bobwhite** All Reports: 5 Apr Yankton DC; 3 May Gregory RM; 19 May Gregory RM; 21 May Union JSP; 22 May Clay KM  
**Common Loon** Early: 26 Mar Charles Mix JSP; 30 Mar Stanley RDO; 2 Apr Hughes KM; 5 Apr Day WS; 2 May Butte JLB ... Late: 27 May Stanley KCJ; 21 May Day WS; 17 May Lake JSP  
**Pied-billed Grebe** Early: 26 Mar Brown MRZ; 2 Apr McCook JSP; 2 Apr Minnehaha DC; 5 Apr Stanley RDO; 2 May Butte JLB  
**Horned Grebe** Early: **11 Mar Stanley KM; 12 Mar Charles Mix RM**; 26 Mar Yankton DS; 11 Apr Minnehaha DC ... Late: 13 May Sully KM; 7 May Minnehaha JCS; 4 May Charles Mix RM  
**Red-necked Grebe** All Reports: 16 Apr Marshall JSP; 21 Apr Turner DC  
**Eared Grebe** Early: 3 Apr Charles Mix RM; 10 Apr Sully KM; 15 Apr Hughes RDO; 22 Apr Harding CEM, KM; 23 Apr Miner JSP  
**Western Grebe** Early: 15 Apr Hughes RDO; 15 Apr Stanley KM; 15 Apr Harding CEM; 16 Apr Day JSP  
**Clark's Grebe** All Reports: 23 Apr Stanley RDO; 27 Apr Gregory RM; 30 Apr Hughes KM; 1 May Stanley KM; 9 May Hughes DC; 14 May Charles Mix RM  
**American White Pelican** Early: 26 Mar Charles Mix RM; 28 Mar Hughes RDO; 2 Apr McCook JSP; 2 Apr Sully KM; 21 Apr Harding CEM  
**Double-crested Cormorant** Early: **15 Mar Hyde NS**; 27 Mar Stanley KM; 2 Apr McCook JSP; 2 Apr Minnehaha DC; 20 Apr Pennington MMM  
**American Bittern** All Reports: 28 Apr Brookings KCJ; 8 May Hughes KM; 14 May Pennington JLB; 20 May Sanborn BFW; 30 May Minnehaha DC

**Great Blue Heron** Early: 20 Mar Charles Mix RM; 21 Mar Hughes DB; 22 Mar Pennington JLB; 1 Apr Day WS

**Great Egret** Early: 8 Apr Day WS; 9 Apr Lake JSP; 9 Apr Davison RM; 24 Apr Stanley KM

**Snowy Egret** Early: 20 Apr Codington JCS; 30 Apr Minnehaha MRZ; 6 May Kingsbury DC; 9 May Clay DS

**Cattle Egret** Early: 19 Apr Tripp RAP; 20 Apr Hughes KM; 21 Apr Clay DS; 21 Apr Charles Mix RAP; 30 Apr Minnehaha RFS, JSP

**Green Heron** All Reports: 24 Apr Beadle BFW; 1 May Pennington JLB; 17 May Lake JSP; 24 May Stanley KM

**Black-crowned Night-Heron** Early: 24 Apr Hughes KM, RDO; 29 Apr Brookings KCJ; 30 Apr Minnehaha RFS, JSP

**White-faced Ibis** Early: 30 Apr Minnehaha RFS, JSP; 3 May Beadle BFW; 11 May Lake JSP; 15 May Hughes KM, DB

**Turkey Vulture** Early: **16 Mar Charles Mix RM**; 30 Mar Minnehaha MRZ; 2 Apr Hughes RDO; 2 Apr Meade APB

**Osprey** Early: 4 Apr Pennington TBW; 11 Apr Lawrence EK; 15 Apr Stanley RDO, KM; 16 Apr Minnehaha MRZ ... Late: 27 May Walworth RFS; 22 May Minnehaha MRZ; 18 May Lake JSP; 18 May Hughes KM

**Northern Harrier** Early: 1 Mar Brown JCS; 2 Mar Butte JLB; 3 Mar Charles Mix RM

**Sharp-shinned Hawk** Late: **25 May Lyman KCJ**; 1 May Hughes KM; 16 Apr Lincoln RFS

**Northern Goshawk** All Reports: 26 Mar Harding CEM; 4 Mar Harding CEM

**Broad-winged Hawk** Early: 12 Apr Spink JCS; 16 Apr Lincoln RFS; 16 Apr Union DS; 22 Apr Harding CEM ... Late: 7 May Stanley RDO; 7 May Lincoln RFS; 6 May Lake DC

**Swainson's Hawk** Early: 27 Mar Stanley KM; 7 Apr Bon Homme RM; 20 Apr Lincoln DC; 21 Apr Perkins KM

**Ferruginous Hawk** Early: 2 Mar Custer MMM; 5 Mar Hughes KM; 5 Mar Harding CEM; 28 Mar Codington MRZ

**Rough-legged Hawk** Late: 14 May Harding CEM; 2 May Butte JLB; 29 Apr Stanley DB; 19 Mar Minnehaha MS

**Golden Eagle** Late: **9 May Hughes DC**; **3 May Beadle BFW**; 10 Apr Sully KM

**Merlin** Late: **14 May Brookings KCJ**; 27 Mar Stanley RDO; 26 Mar Bon Homme JSP

**Gyrfalcon** Only Report: 12 Mar Pennington DGP

**Peregrine Falcon** Early: 22 Apr Charles Mix RAP; 23 Apr Stanley DB; 28 Apr Hughes KM; 1 May Minnehaha DC; 14 May Bennett TJ ... Late: 20 May Lawrence DGP; 15 May Stanley DB; 14 May Miner JSP

**Prairie Falcon** Late: 11 Mar Sully KM

**Virginia Rail** Early: **8 Mar Fall River JLB, AKB**; **20 Apr Hughes KM**; 14 May Meade APB; 20 May Lake JSP

**Sora** Early: 30 Apr Hughes KM; 5 May Minnehaha RFS; 7 May Moody JSP

**American Coot** Early: 1 Mar Hughes RDO; 1 Mar Pennington JLB; 11 Mar Fall River JSP; 19 Mar Lake JSP; 19 Mar Minnehaha MRZ

**Sandhill Crane** Early: 5 Mar Charles Mix RM; 20 Mar Fall River JLB, AKB; 27 Mar Meade EEM; 28 Mar Beadle BFW ... Late: 4 May Hughes KM; 3 May Sully BFW; 2 May Butte JLB

**Whooping Crane** Only Report: 2 Apr Charles Mix RM

**Black-bellied Plover** Early: **22 Apr Harding CEM, KM**; 6 May Kingsbury DC; 13 May Custer MMM; 22 May Brule KM, RDO ... Late: 28 May Hanson BFW; 24 May Clay DC; 14 May Jackson TJ

**American Golden-Plover** Early: 6 May Kingsbury DC; 8 May Stanley DB; 10 May Lake JSP, RFS ... Late: 29 May McCook DC; 28 May Miner JSP; 28 May Hanson BFW

**Semipalmated Plover** Early: 17 Apr Clay DS; 20 Apr Hughes RDO; 20 Apr Sully RDO; 23 Apr Miner JSP; 2 May Meade JLB ... Late: 29 May Charles Mix RM; 29 May Miner DC; 24 May Clay DC; 13 May Harding CEM

**Piping Plover** Early: 21 Apr Hughes KM; 21 Apr Stanley RDO; 6 May Lake JSP

**Killdeer** Early: 1 Mar Meade EEM; 4 Mar Custer MMM; 5 Mar Charles Mix RM; 17 Mar Minne-

haha DC

**Black-necked Stilt** All Reports: 3 May Lake (2) DC; 17-19 May Lake (1) JSP

**American Avocet** Early: 10 Apr Sully KM; 14 Apr Charles Mix RM; 16 Apr Minnehaha DC; 22 Apr Harding CEM

**Greater Yellowlegs** Early: 2 Apr Sully KM; 2 Apr McCook JSP; 3 Apr Charles Mix RM; 9 Apr Mellette BFW ... Late: 24 May Clay DC; 24 May Minnehaha DC; 6 May Lincoln RFS; 22 Apr Custer MMM

**Lesser Yellowlegs** Early: 2 Apr McCook JSP; 9 Apr Lake JSP; 10 Apr Sully KM, RDO; 22 Apr Harding CEM ... Late: 29 May Charles Mix RM; 24 May Clay DC; 21 May Union JSP; 14 May Minnehaha MS; 14 May Miner JSP; 14 May Meade APB; 14 May Harding CEM

**Solitary Sandpiper** Early: 1 May Hughes DB; 2 May Pennington MMM; 4 May Charles Mix RM; 6 May Kingsbury DC ... Late: 15 May Stanley DB; 15 May Hughes DB; 14 May Pennington RC; 14 May Miner JSP

**Willet** Early: 20 Apr Sully RDO; 20 Apr Spink JCS; 23 Apr Miner JSP; 24 Apr Harding KM

**Spotted Sandpiper** Early: 4 May Sully RDO; 4 May Charles Mix RM; 5 May Custer KCJ; 5 May Minnehaha RFS

**Upland Sandpiper** Early: 20 Apr Beadle BFW; 23 Apr Stanley DB; 30 Apr Custer MMM

**Long-billed Curlew** Early: 29 Mar Custer MMM; 3 Apr Meade EEM; 9 Apr Stanley KM; 9 Apr Tripp RDO

**Hudsonian Godwit** Early: **9 Apr Lake JSP**; 14 Apr Charles Mix RM; 16 Apr Clay DS; 16 Apr Sully KM ... Late: 29 May Miner DC; 15 May Hughes KM; 14 May Sully RDO

**Marbled Godwit** Early: 9 Apr Lake JSP; 10 Apr Sully KM, RDO; 15 Apr Jerauld BFW; 22 Apr Harding CEM

**Ruddy Turnstone** All Reports: 10 May Lake JSP; 14 May Kingsbury JSP; 20 May Lake KM, RDO; 27 May Clark RFS; 29 May Miner DC

**Sanderling** Early: 6 May Lake DC; 9 May Stanley RDO; 12 May Hughes KM; 14 May Bennett TJ ... Late: 29 May Miner DC; 28 May Sully RDO; 27 May Clark RFS

**Semipalmated Sandpiper** Early: 16 Apr Sully KM; 16 Apr Lincoln RFS; 28 Apr Douglas DC; 7 May Pennington JLB ... Late: 30 May Minnehaha DC; 29 May Miner DC; 28 May Sully RDO

**Least Sandpiper** Early: 22 Apr Harding CEM, KM; 23 Apr Miner JSP; 28 Apr Hutchinson DC; 4 May Charles Mix RM ... Late: 28 May Miner JSP; 28 May Hanson BFW; 21 May Clay DC; 12 May Harding CEM

**White-rumped Sandpiper** Early: 6 May Lake JSP, DC; 6 May Lincoln RFS; 11 May Stanley KM ... Late: 30 May Minnehaha DC; 29 May Miner DC; 28 May Sully RDO

**Baird's Sandpiper** Early: 27 Mar Clay DS; 28 Mar Brown DAT; 1 Apr Charles Mix RM; 22 Apr Harding CEM ... Late: 29 May Charles Mix RM; 21 May Clay DC; 16 May Hughes KM; 14 May Brown MRZ; 12 May Harding CEM

**Pectoral Sandpiper** Early: **25 Mar Clay DS**; 9 Apr Lake JSP; 9 Apr Charles Mix RM ... Late: 29 May Miner DC; 29 May Charles Mix RM; 24 May Sully BFW; 24 May Minnehaha DC

**Dunlin** Early: **9 Apr Lake JSP**; 23 Apr Miner JSP; 30 Apr Minnehaha RFS, JSP; 4 May Sully RDO, KM ... Late: 29 May Miner DC; 28 May Sully RDO; 28 May Hanson BFW

**Stilt Sandpiper** Early: 7 May Sully KM; 7 May Lincoln RFS; 8 May Stanley RDO, DB; 12 May Harding CEM ... Late: 30 May Faulk MMM; 29 May Miner DC; 28 May Sully RDO

**Buff-breasted Sandpiper** Only Report: **26 May Lincoln DC**

**Short-billed Dowitcher** All Reports: 22 Apr McCook DC; 7 May Hyde NS; 8 May Hughes KM; 8 May Stanley RDO; 13 May Charles Mix RM; 29 May Charles Mix RM

**Long-billed Dowitcher** Early: 29 Apr Sully KM; 30 Apr Minnehaha RFS, JSP; 3 May Lake JSP; 7 May Pennington JLB ... Late: 28 May Pennington JLB; 14 May Miner JSP; 14 May Harding CEM; 13 May Sully KM

**Wilson's Snipe** Early: 8 Mar Fall River JLB; 25 Mar Clay DS; 2 Apr McCook JSP

**American Woodcock** Early: **9 Mar Hughes KM**; 16 Apr Lincoln RFS; 29 Apr Minnehaha RFS

**Wilson's Phalarope** Early: 16 Apr Minnehaha MRZ; 20 Apr Lincoln DC; 20 Apr Sully RDO; 22 Apr Harding CEM, KM

**Red-necked Phalarope** Early: **3 May Lake DC**; **7 May Hyde NS**; 12 May Harding CEM; ...

Late: 16 May Brule JC; 15 May Sully KM; 14 May Miner JSP; 14 May Bennett TJ  
**Franklin's Gull** Early: 19 Mar McCook MRZ; 21 Mar Charles Mix RM; 25 Mar Stanley KM; 2 May Butte JLB  
**Bonaparte's Gull** Early: 23 Mar Charles Mix RM; 1 Apr Hughes KM; 3 Apr Stanley RDO; 9 Apr Lake JSP...Late: 13 May Sully KM; 30 Apr Minnehaha RFS, JSP, DC; 24 Apr Stanley DB  
**Ring-billed Gull** Early: 1 Mar Stanley RDO; 1 Mar Charles Mix RM; 5 Mar Lake JSP; 12 Mar Butte JLB  
**California Gull** Early: 10 Mar Buffalo BFW; 12 Mar Stanley KM; 13 Mar Hughes RDO  
**Herring Gull** Early: 1 Mar Stanley RDO; 5 Mar Charles Mix RM; 19 Mar Hughes DB; 19 Mar Kingsbury JSP; 19 Mar McCook MRZ ... Late: 28 May Miner JSP; 23 Apr Minnehaha DC; 10 Apr Sully KM  
**Thayer's Gull** All Reports: 5 Apr Hughes KM; 26 Mar Charles Mix JSP; 14 Mar Stanley RDO; 12 Mar Stanley KM; 1 Mar Stanley RDO  
**Lesser Black-backed Gull** reported 1 Mar – 11 Apr Hughes and Stanley RDO, KM  
**Glaucous Gull** All Reports: 26 Mar Charles Mix JSP; 14 Mar Stanley RDO  
**Caspian Tern** Early: 26 Apr Stanley RDO, KM; 30 Apr Hughes DB; 9 May Buffalo DC; 12 May Pennington JLB ... Late: 27 May Stanley KCJ; 15 May Hughes DB  
**Common Tern** Early: 27 Apr Hughes RDO; 12 May Stanley DB; 22 May Clay DC  
**Forster's Tern** Early: 11 Apr Charles Mix RM; 17 Apr Stanley DB; 21 Apr Hughes KM, RDO; 21 Apr Turner DC  
**Least Tern** All Reports: 12 May Stanley DB; 12 May Hughes DC; 21 May Clay DC; 21 May Union BFH, JSP  
**Black Tern** Early: 6 May Lake JSP; 12 May Beadle BFW; 12 May Hughes KM; 12 May Minnehaha DC; 12 May Stanley DB; 28 May Pennington JLB  
**Eurasian Collared-Dove** reported from Brookings, Butte, Charles Mix, Edmunds, Fall River, Hamlin, Hughes, Lake, McCook, Meade, Minnehaha, Pennington, Stanley, Union, and Ziebach counties  
**Mourning Dove** Early: 6 Mar Clay JC; 19 Mar Lake JSP; 19 Mar Minnehaha MRZ; 11 Apr Custer MMM  
**Black-billed Cuckoo** All Reports: 20 May Hughes KM, RDO; 20 May Gregory TJ; 23 May Pennington TJ; 24 May Hughes EDS; 24 May Stanley KM  
**Yellow-billed Cuckoo** All Reports: 18 May Charles Mix RM; 20 May Gregory TJ; 21 May Union KM; 24 May Stanley DB, RDO; 26 May Hughes KM  
**Barn Owl** All Reports: 12 Mar Hughes KM; 14 May Bennett (6) TJ, JLB; 25 May Stanley KJ  
**Eastern Screech-Owl** Confirmed Breeding: 23 Apr Butte (ON) EK; 30 Apr Hughes (NY) KM  
**Snowy Owl** All Reports: 24 Mar Moody KCJ; 5 Mar Sully KM; 5 Mar Butte AKB  
**Burrowing Owl** Early: 3 Apr Hughes KM; 6 Apr Custer MMM; 16 Apr Stanley DB; 16 Apr Harding CEM; 30 May Faulk MMM  
**Barred Owl** All Reports: 16 Apr Lincoln RFS; 6 May Lincoln RFS  
**Long-eared Owl** Confirmed Breeding: 19 Mar Sully (ON) KM; 17 Apr Hughes (ON) KM; 7 May Hughes (ON) DB; 23 May Hughes (FL) DB ... also reported from Fall River, Harding, Stanley, and Union counties  
**Short-eared Owl** reported from Custer, Harding, Hughes, McPherson, Minnehaha, Perkins, and Stanley counties  
**Northern Saw-whet Owl** Late: 14 Mar Stanley RDO; 6 Mar Hughes RDO ... Confirmed Breeding: 22 Apr Harding (NE) CEM  
**Common Nighthawk** Early: 16 May Minnehaha MS; 17 May Stanley KM; 18 May Hughes DB; 20 May Custer MMM  
**Common Poorwill** Early: 15 May Meade APB; 15 May Stanley RDO; 20 May Harding (ON) KM ... also Confirmed Breeding: 29 May Harding (NE) DB  
**Chuck-will's-widow** Early: 7 May Stanley RDO  
**Whip-poor-will** All Reports: 5 May Lincoln RFS; 13 Mar Charles Mix RM; 20 May Clay KM; 31 May Charles Mix RM  
**Chimney Swift** Early: 19 Apr Lake JSP; 19 Apr Clay JC; 1 May Charles Mix RM; 18 May

Pennington MMM

- White-throated Swift** Early: 16 Apr Harding CEM; 2 May Pennington JLB; 9 May Lawrence DGP
- Ruby-throated Hummingbird** All Reports: 12 May Charles Mix RM; 13 May Union JC, DC; 23 May Lake JSP; 26 May Lincoln DC; 31 May Charles Mix RM
- Belted Kingfisher** Early: 9 Mar Lawrence DGP; 26 Mar Charles Mix JSP; 1 Apr Minnehaha DC
- Lewis's Woodpecker** All Reports: 13 Mar Custer KH; 23 May Pennington TBW; 31 May Pennington JLB
- Red-headed Woodpecker** Early: 19 Mar McCook MRZ; 3 May Charles Mix RM; 7 May Lincoln RFS; 14 May Pennington JLB
- Red-bellied Woodpecker** reported from Brookings, Charles Mix, Hughes, Lake, Lincoln, Minnehaha, Roberts, Stanley, and Union counties
- Yellow-bellied Sapsucker** Early: 16 Apr Roberts JSP; 16 Apr Lincoln RFS
- Red-naped Sapsucker** All Reports: 15 Apr Lawrence DGP; 5 May Custer KCJ; 19 May Lawrence DGP
- American Three-toed Woodpecker** reported from Custer, Lawrence, and Pennington counties
- Black-backed Woodpecker** All Reports: 27 Mar Pennington AKB; 29 Apr Pennington RDO; 1 May Custer RDO
- Northern Flicker** Early: 1 Mar Hughes RDO; 4 Mar Lawrence DGP; 5 Mar Butte AKB; 5 Mar Lake JSP; 5 Mar Charles Mix RM
- Pileated Woodpecker** All Reports: 28 Mar Roberts PEL; 16 Apr Roberts JSP
- Olive-sided Flycatcher** All Reports: 17 May Minnehaha JCS; 22 May Minnehaha DC; 23 May Stanley KM; 24 May Stanley KM
- Western Wood-Pewee** Early: 5 May Pennington TJ; 26 May Meade JLB; 29 May Custer JLB; 29 May Fall River RC
- Eastern Wood-Pewee** Early: 17 May Minnehaha JCS; 20 May Lincoln KM; 21 May Clay DC
- Yellow-bellied Flycatcher** All Reports: 17 May Minnehaha JCS; 21 May Clay DC; 27 May Union JC; 28 May Miner JSP; 28 May Sully RDO; 31 May Minnehaha JCS
- Alder Flycatcher** Early: 19 May Union JC; 24 May Lake JSP; 24 May Stanley KM; 30 May Pennington TJ ... Late: 30 May Minnehaha DC; 30 May Walworth RFS; 25 May Stanley RDO, KCJ; 25 May Hughes KM
- Willow Flycatcher** Early: 13 May Pennington RC; 19 May Union JC; 21 May Clay DC; 25 May Beadle BFW
- Least Flycatcher** Early: 6 May Stanley DB, RDO, KM; 7 May Lincoln RFS; 7 May Minnehaha DC; 13 May Pennington MMM, RC ... Confirmed Breeding: 29 May Harding (NE) DB
- Dusky Flycatcher** All Reports: 19 May Lawrence DGP; 28 May Pennington TJ; 29 May Custer JLB; 29 May Lawrence DGP
- Cordilleran Flycatcher** All Reports: 19 May Meade AKB; 20 May Lawrence DGP; 29 May Lawrence DGP
- Eastern Phoebe** Early: 26 Mar Charles Mix JSP; 28 Mar Lincoln MRZ; 2 Apr Lake JSP; 27 May Meade RC
- Say's Phoebe** Early: 6 Apr Custer MMM; 12 Apr Harding CEM; 16 Apr Stanley DB
- Great Crested Flycatcher** Early: 10 May Lincoln RFS; 13 May Lake JSP; 14 May Pennington JLB; 18 May Hughes KM; 18 May Sully RDO
- Western Kingbird** Early: 6 May Meade EEM; 6 May Harding CEM; 7 May Pennington JLB; 7 May Custer MMM; 7 May Stanley DB, KM; 10 May Minnehaha DC
- Eastern Kingbird** Early: 6 May Kingsbury DC; 6 May Lake JSP; 6 May Meade EEM; 8 May Buffalo BFW
- Loggerhead Shrike** Early: 5 Apr Yankton DC; 9 Apr Lake JSP; 16 Apr Roberts JSP; 17 Apr Harding CEM
- Northern Shrike** Late: 30 Mar Day PEL; 26 Mar Harding CEM, KM; 24 Mar Lake JSP; 19 Mar Sully KM
- Bell's Vireo** Early: 14 May Pennington JLB; 18 May Lake JSP; 18 May Stanley RDO
- Yellow-throated Vireo** All Reports: 15 May Lincoln JC; 21 May Clay DC; 24 May Minnehaha

DC; 25 May Lincoln JC

**Plumbeous Vireo** All Reports: 22 May Lawrence DGP; 24 May Pennington JLB; 27 May Harding CEM; 28 May Harding CEM, KM; 29 May Custer JLB; 29 May Harding DB

**Blue-headed Vireo** All Reports: 7 May Lake JSP; 24 May Lake JSP

**Warbling Vireo** Early: 7 May Lincoln RFS; 7 May Moody JSP; 10 May Stanley KM; 19 May Meade AKB; 19 May Pennington TBW

**Philadelphia Vireo** Early: 16 May Charles Mix RM; 19 May Clay JC; 21 May Union JC, DC; 23 May Lake JSP ... Late: 29 May Walworth RFS; 29 May Sully RDO; 29 May Minnehaha JCS; 25 May Stanley RDO

**Red-eyed Vireo** Early: 16 May Hughes EDS; 17 May Lake JSP; 19 May Meade AKB

**Gray Jay** reported from Custer, Lawrence, and Pennington counties

**Pinyon Jay** reported from Meade County

**Clark's Nutcracker** All Reports: 3 Mar Pennington JLB; 11 Mar Fall River JSP; 25 Mar Custer AKB; 4 Apr Meade EEM; 9 May Custer JCS

**Purple Martin** Early: 15 Apr Charles Mix RM; 18 Apr Hughes KM; 19 Apr Lake JSP

**Tree Swallow** Early: 1 Apr Meade EEM; 2 Apr Minnehaha DC; 9 Apr Hughes KM; 9 Apr Lake JSP

**Violet-green Swallow** Early: 28 Apr Pennington JLB; 18 May Lawrence DGP; 22 May Harding CEM

**Northern Rough-winged Swallow** Early: 12 Apr Charles Mix RM; 16 Apr Lincoln RFS; 17 Apr Hughes RDO; 28 Apr Pennington JLB

**Bank Swallow** Early: 19 Apr Stanley KM; 24 Apr Beadle BFW; 30 Apr Minnehaha RFS, JSP; 21 May Harding CEM

**Cliff Swallow** Early: 19 Apr Stanley RDO; 29 Apr Brookings KCJ; 5 May Minnehaha RFS; 7 May Pennington JLB; 7 May Harding CEM

**Barn Swallow** Early: 18 Apr Clay JC; 21 Apr Turner DC; 27 Apr Stanley RDO; 28 Apr Pennington JLB

**Red-breasted Nuthatch** Late: 24 May Lake JSP; 8 May Hughes KM; 7 May Lincoln RFS

**Pygmy Nuthatch** reported from Custer, Lawrence, Meade, and Pennington counties

**Brown Creeper** Late: 7 May Harding CEM; 14 Apr Minnehaha MRZ; 14 Apr Brookings KCJ; 26 Mar Union BFH

**Rock Wren** Early: 24 Apr Stanley DB; 3 May Pennington DB; 16 May Meade APB

**Canyon Wren** reported from Fall River, Lawrence, Meade, and Pennington counties

**Carolina Wren** All Reports: 18 Mar Clay PEL; 21 May Clay BFH, DC, KM; 22 May Clay JSP

**House Wren** Early: 19 Apr Clay JC; 19 Apr Charles Mix RM; 23 Apr Hughes EDS; 30 Apr Minnehaha RFS, JSP; 7 May Harding CEM

**Winter Wren** All Reports: 12 Mar Pennington DS; 2 Apr Lake JSP; 3 Apr Brown DAT; 24 May Lawrence DGP; 28 May Lawrence DGP

**Sedge Wren** Early: 7 May Moody JSP; 8 May Hughes KM; 11 May Minnehaha DC

**Marsh Wren** Early: 11 Mar Fall River JSP; 2 Apr Hughes KM; 15 Apr Stanley KM; 7 May Moody JSP

**American Dipper** reported from Lawrence County

**Golden-crowned Kinglet** Late: 9 Apr Lake JSP; 3 Apr Minnehaha MS

**Ruby-crowned Kinglet** Early: 29 Mar Brown DAT; 2 Apr Lake JSP; 4 Apr Clay JC; 11 Apr Lawrence EK ... Late: 25 May Hughes EDS; 16 May Lake JSP; 14 May Miner JSP; 14 May Brookings KCJ

**Blue-gray Gnatcatcher** Early: 30 Apr Lincoln DS; 10 May Stanley RDO, KM; 13 May Union DC; 16 May Fall River RAP

**Eastern Bluebird** Early: 3 Mar Charles Mix RM; 5 Mar Hughes KM; 21 Mar Butte JLB; 28 Mar Lincoln MRZ

**Mountain Bluebird** Early: 1 Mar Meade EEM; 2 Mar Custer KH; 3 Mar Pennington TBW

**Townsend's Solitaire** Late: 16 Apr Day JSP; 1 Apr Stanley RDO

**Veery** All Reports: 5 May Custer KCJ; 20 May Lake JSP

**Gray-cheeked Thrush** Early: 12 May Minnehaha JCS; 13 May Lake JSP; 13 May Stanley KM; 29

May Harding CEM, KM ... Late: 25 May Stanley KCJ; 22 May Union JSP; 16 May Minnehaha MS; 16 May Hughes EDS

**Swainson's Thrush** Early: 1 May Minnehaha JCS; 4 May Hughes KM, EDS; 5 May Custer KCJ ... Late: 29 May Walworth RFS; 29 May Stanley RDO; 29 May Harding KM, DB; 28 May Miner JSP; 28 May Faulk MMM

**Hermit Thrush** All Reports: 9 Apr Minnehaha JCS; 23 Apr Brown DAT; 24 Apr Minnehaha MS; 14 May Brookings KCJ

**Wood Thrush** All Reports: 5 May Minnehaha RFS; 14 May Charles Mix RM; 20 May Lincoln KM; 21 May Union DC

**Gray Catbird** Early: 5 May Lincoln RFS; 7 May Moody JSP; 10 May Minnehaha DC; 13 May Pennington RC; 14 May Charles Mix RM

**Northern Mockingbird** All Reports: **16 Apr Clay DS, JC**; 14 May Minnehaha MRZ; 18 May Lake JSP; 21 May Clay BFH

**Brown Thrasher** Early: 12 Apr Meade EEM; 19 Apr Clay DS; 30 Apr Minnehaha RFS, JSP

**American Pipit** All Reports: 10 Apr Sully KM, RDO; 22 Apr Harding KM; 29 Apr Sully KM; 6 May Kingsbury DC; 11 May Lake DC; 13 May Harding CEM; 14 May Sully RDO

**Sprague's Pipit** All Reports: 22 Apr Harding CEM; 25 Apr Minnehaha RFS; 23 May Custer MMM

**Bohemian Waxwing** Late: 6 Apr Lake JSP; 6 Apr Lawrence DGP; 21 Mar Stanley KM

**Blue-winged Warbler** All Reports: 15 May Lincoln JC; 20 May Lincoln KM; 24 May Lincoln DC; 25 May Lincoln DC

**Golden-winged Warbler** All Reports: 16 May Lake JSP; 22 May Union DC

**Tennessee Warbler** Early: 5 May Minnehaha DC, JCS; 6 May Hughes EDS; 7 May Lincoln RFS; 7 May Stanley KM; 14 May Harding CEM ... Late: 30 May Walworth RFS; 30 May Kingsbury KCJ; 29 May Stanley RDO; 29 May Faulk MMM; 29 May Davison RM; 29 May Harding CEM, KM, DB

**Orange-crowned Warbler** Early: 17 Apr Lincoln RFS; 18 Apr Minnehaha DC; 20 Apr Hughes KM; 22 Apr Pennington MMM; 22 Apr Harding CEM ... Late: 21 May Clay DC; 16 May Minnehaha MS; 15 May Stanley KM; 15 May Hughes DB; 14 May Pennington RC; 14 May Meade APB; 14 May Harding CEM

**Nashville Warbler** All Reports: 7 May Lincoln RFS; 7 May Moody JSP; 23 May Lake JSP; 27 May Union JC

**Virginia's Warbler** Only Report: 29 May Custer DS

**Northern Parula** Only Report: 7 May Lincoln RFS

**Yellow Warbler** Early: 6 May Lincoln RFS; 7 May Stanley KM; 8 May Pennington JLB

**Chestnut-sided Warbler** Early: 20 May Minnehaha JCS; 21 May Union BFH, KM; 22 May Clay KM ... Late: 29 May Walworth RFS; 29 May Faulk MMM; 28 May Miner JSP

**Magnolia Warbler** Early: 13 May Lake JSP; 17 May Hughes KM; 21 May Clay DC; 21 May Union DC; 31 May Perkins RFS ... Late: 29 May Faulk MMM; 29 May Minnehaha JCS; 28 May Miner JSP; 24 May Stanley RDO, KM

**Cape May Warbler** Only Report: 18 May Lake JSP

**Black-throated Blue Warbler** All Reports: 14 May Union DC; 28 May Walworth RFS

**Yellow-rumped Warbler** Early: **6 Mar Stanley KM**; 2 Apr Lake JSP; 9 Apr Union DS; 14 Apr Lawrence DGP ... Late: 28 May Walworth RFS; 27 May Hughes EDS; 23 May Minnehaha MRZ

**Black-throated Green Warbler** All Reports: 7 May Lincoln RFS; 13 May Union JC; 15 May Union JC; 24 May Lincoln DC

**Blackburnian Warbler** All Reports: 13 May Minnehaha DC; 20 May Lake JSP; 21 May Union JC; 24 May Lake JSP; 26 May Lake JSP

**Palm Warbler** Early: 4 May Sully KM, RDO; 5 May Lake JSP; 7 May Lincoln RFS; 7 May Moody JSP ... Late: 23 May Minnehaha MRZ; 14 May Stanley KM; 14 May Minnehaha DC

**Bay-breasted Warbler** All Reports: 12 May Union DS; 15 May Lincoln JC; 18 May Lake JSP; 26 May Lake JSP; 29 May Walworth RFS

**Blackpoll Warbler** Early: 7 May Lincoln RFS; 9 May Lake JSP; 10 May Brown DAT; 12 May



Hughes EDS; 13 May Pennington RC ... Late: 30 May Perkins RFS; 29 May Sully KM, RDO; 29 May Harding CEM, KM; 29 May Faulk MMM

**Black-and-white Warbler** Early: 5 May Lake JSP; 7 May Lincoln RFS; 7 May Minnehaha MS; 7 May Moody JSP; 9 May Hughes KM; 26 May Meade AKB ... Late: 30 May Walworth RFS; 30 May Lawrence DGP; 24 May Lake JSP

**American Redstart** Early: 7 May Lincoln RFS; 7 May Moody JSP; 7 May Stanley RDO, KM; 8 May Meade AKB

**Ovenbird** Early: 6 May Lincoln RFS; 13 May Hughes EDS; 13 May Lake JSP; 13 May Minnehaha DC; 19 May Meade AKB

**Northern Waterthrush** Early: 7 May Moody JSP; 9 May Lake JSP; 9 May Minnehaha DC; 11 May Hughes KM; 11 May Pennington TBW ... Late: 19 May Codington JCS; 18 May Hughes KM; 15 May Stanley DB; 14 May Pennington RC

**Connecticut Warbler** All Reports: 28 May Walworth RFS; 30 May Walworth RFS

**Mourning Warbler** Early: 18 May Clay JC; 19 May Lake JSP; 22 May Lincoln DC ... Late: 30 May Walworth RFS; 30 May Clay JC; 28 May Miner JSP

**MacGillivray's Warbler** Only Report: 22 May Lawrence DGP

**Common Yellowthroat** Early: 7 May Hughes KM; 7 May Lincoln RFS; 7 May Moody JSP; 7 May Stanley DB; 8 May Pennington JLB

**Wilson's Warbler** Early: 16 May Lake JSP; 16 May Minnehaha JCS; 21 May Union JSP ... Late: 29 May Stanley RDO; 24 May Lake JSP; 23 May Hughes EDS

**Canada Warbler** All Reports: 24 May Lake JSP; 27 May Union JC; 28 May Miner JSP; 29 May Walworth RFS

**Yellow-breasted Chat** Early: 13 May Stanley KM; 14 May Pennington JLB; 20 May Hughes EDS; 23 May Minnehaha JCS

**Scarlet Tanager** Early: 8 May Lincoln RFS; 21 May Clay DC; 21 May Union KM

**Western Tanager** Early: 13 May Pennington RC; 27 May Meade RC; 29 May Custer JLB; 29 May Fall River RC; 29 May Harding CEM, KM

**Spotted Towhee** Early: 17 Apr Custer MMM; 18 Apr Stanley RDO; 18 Apr Charles Mix RM; 6 May Lincoln RFS

**Eastern Towhee** Early: 16 Apr Lincoln RFS; 18 Apr Minnehaha DC; 12 May Stanley KM

**American Tree Sparrow** Late: 6 Apr Custer MMM; 2 Apr Minnehaha DC; 2 Apr McCook JSP; 27 Mar Harding CEM

**Chipping Sparrow** Early: 5 Mar Gregory RM; 10 Apr Lake JSP; 11 Apr Minnehaha DC; 14 Apr Brookings KCJ; 17 Apr Hughes EDS; 26 Apr Pennington MMM

**Clay-colored Sparrow** Early: 3 May Charles Mix RM; 4 May Sully KM, RDO; 5 May Minnehaha DC; 7 May Custer MMM; 7 May Pennington JLB

**Brewer's Sparrow** All Reports: 9 May Custer MMM; 14 May Harding CEM

**Field Sparrow** Early: 16 Apr Roberts JSP; 16 Apr Lincoln RFS; 16 Apr Charles Mix RM; 17 Apr Custer MMM

**Vesper Sparrow** Early: 9 Apr Lake JSP; 11 Apr Minnehaha DC; 14 Apr Jones DB; 15 Apr Stanley KM

**Lark Sparrow** Early: 24 Apr Hughes KM; 27 Apr Stanley RDO; 3 May Pennington DB; 4 May Minnehaha DC

**Lark Bunting** Early: 7 May Custer MMM; 7 May Pennington JLB; 7 May Harding CEM; 8 May Stanley KM; 19 May Hand BFW

**Savannah Sparrow** Early: 9 Apr Lake JSP; 16 Apr Charles Mix RM; 21 Apr Lincoln DC; 27 Apr Custer MMM

**Grasshopper Sparrow** Early: 7 May Custer MMM; 8 May Jones DB; 12 May Minnehaha DC; 20 May Hughes KM, RDO

**Le Conte's Sparrow** Only Report: 23 Apr Hanson DGP

**Fox Sparrow** All Reports: 2 Apr Lake JSP; 19 Apr Charles Mix RM; 23 Apr Charles Mix DGP; 24 May Lincoln DC

**Song Sparrow** Early: 11 Mar Pennington MMM; 24 Mar Lake JSP; 1 Apr Stanley KM

**Lincoln's Sparrow** Early: 22 Apr Harding CEM, KM; 26 Apr Stanley RDO; 30 Apr Custer

MMM; 5 May Lake JSP; 5 May Minnehaha DC ... Late: 21 May Minnehaha MRZ; 15 May Stanley DB; 14 May Pennington RC; 14 May Miner JSP; 14 May Lawrence DGP; 14 May Harding CEM

**Swamp Sparrow** All Reports: 16 Apr Clay DS; 24 Apr Harding CEM; 7 May Lincoln RFS; 10 May Lake JSP; 14 May Miner JSP; 29 May Sanborn DC

**White-throated Sparrow** Early: 15 Apr Minnehaha JCS; 4 May Sully KM, RDO; 5 May Lake JSP; 5 May Charles Mix RM; 12 May Lawrence DGP ... Late: 19 May Lake JSP; 14 May Minnehaha MRZ; 14 May Miner JSP; 14 May Meade APB; 14 May Brookings KCJ; 14 May Bennett TJ; 13 May Stanley KM

**Harris's Sparrow** Early: 26 Apr Moody DC; 4 May Charles Mix RM; 5 May Day WS; 5 May Hughes KM; 5 May Lake JSP; 5 May Minnehaha RFS, DC; 5 May Hyde NS; 12 May Meade AKB; 12 May Harding CEM ... Late: **28 May Clay JC**; 22 May Harding CEM; 15 May Minnehaha MS

**White-crowned Sparrow** Early: 19 Apr Pennington MMM; 23 Apr Charles Mix RM; 24 Apr Stanley RDO; 24 Apr Harding CEM; 1 May Minnehaha JCS ... Late: 24 May Lake JSP; 15 May Stanley DB; 15 May Hughes DB; 15 May Day WS; 15 May Charles Mix RM; 14 May Pennington JLB, RC; 14 May Meade APB; 14 May Bennett TJ

**Dark-eyed Junco** Late: 14 May Brookings KCJ; 4 May Sully KM; 16 Apr Hughes KM; 16 Apr Charles Mix RM

**Lapland Longspur** All Reports: 10 Apr Sully KM; 25 Mar Minnehaha DC; 19 Mar Clay DS; 13 Mar Stanley DB

**Chestnut-collared Longspur** Early: 2 Apr Sully KM; 14 Apr Jones DB; 16 Apr Butte EK; 19 May Hand BFW

**Snow Bunting** Only Report: 12 Mar Butte JLB

**Northern Cardinal** reported **18 Apr Meade EEM**

**Rose-breasted Grosbeak** Early: 5 May Minnehaha DC; 6 May Lincoln RFS; 7 May Lake JSP; 7 May Moody JSP; 8 May Stanley DB; 22 May Pennington TBW

**Black-headed Grosbeak** Early: 4 May Hughes EDS; 5 May Stanley DB; 6 May Pennington MMM

**Blue Grosbeak** Early: 19 May Codington JCS; 20 May Union DS; 25 May Minnehaha DC; 28 May Custer MMM; 28 May Pennington JLB

**Lazuli Bunting** Early: 8 May Meade EEM; 9 May Harding CEM; 10 May Lincoln RFS; 20 May Hughes KM

**Indigo Bunting** Early: 7 May Lincoln RFS; 15 May Hughes KM; 17 May Lake JSP; 30 May Meade EEM

**Dickcissel** Early: 17 May Lake JSP; 19 May Charles Mix RM; 20 May Hughes KM, RDO

**Bobolink** Early: 1 May Hyde NS; 7 May Minnehaha MS; 7 May Lincoln RFS; 13 May Custer MMM

**Eastern Meadowlark** All Reports: 26 Mar Tripp RDO; 14 May Bennett TJ

**Western Meadowlark** Early: 1 Mar Meade EEM; 2 Mar Custer MMM; 3 Mar Charles Mix RM; 5 Mar Lake JSP; 5 Mar Minnehaha RFS

**Yellow-headed Blackbird** Early: 10 Apr Brown JCS; 11 Apr Minnehaha DC; 13 Apr Hughes KM; 21 Apr Harding CEM

**Rusty Blackbird** All Reports: 26 Mar Clay DS; 2 Apr McCook JSP

**Brewer's Blackbird** Early: 17 Apr Charles Mix RM; 21 Apr Pennington MMM; 22 Apr Harding KM; 30 Apr Minnehaha MRZ

**Common Grackle** Early: 19 Mar Lake JSP; 22 Mar Minnehaha DC; 24 Mar Day WS; 26 Mar Charles Mix JSP; 1 Apr Meade EEM

**Great-tailed Grackle** Early: **26 Mar Brown MRZ**; **26 Mar Clay DS**; 29 Apr Gregory RM; 5 May Custer KCJ

**Brown-headed Cowbird** Early: 18 Mar Lake JSP; 2 Apr McCook JSP; 14 Apr Brookings KCJ; 16 Apr Stanley DB; 19 Apr Meade EEM

**Orchard Oriole** Early: 5 May Clay JC; 8 May Hughes KM; 8 May Stanley RDO; 9 May Lake JSP; 14 May Pennington JLB

**Bullock's Oriole** All Reports: 9 May Harding CEM; 12 May Harding CEM; 13 May Custer MMM; 14 May Bennett TJ; 28 May Pennington JLB; 29 May Fall River RC  
**Baltimore Oriole** Early: 5 May Clay JC; 7 May Lincoln RFS; 7 May Minnehaha MS; 7 May Moody JSP; 7 May Charles Mix RM; 12 May Meade EEM  
**Gray-crowned Rosy Finch** Only Report: 30 Mar Meade EEM  
**Pine Grosbeak** All Reports: 26 Mar Harding CEM, KM; 5 Mar Hughes EDS  
**Purple Finch** Late: 9 Apr Lake JSP; 25 Mar Stanley KM; 19 Mar Minnehaha MRZ  
**Cassin's Finch** Only Report: 29 May Custer JLB  
**Red Crossbill** Late: 19 Mar Hughes DB  
**White-winged Crossbill** Only Report: 2 Apr Lawrence DGP  
**Common Redpoll** All Reports: 15 Mar Harding CEM; 13 Mar Meade JLB; 5 Mar Day WS; 2 Mar Hyde NS  
**Pine Siskin** Late: 31 May Charles Mix RM; 31 May Hughes EDS; 29 May Walworth RFS; 23 May Brookings KCJ ... Confirmed Breeding: 24 May Hughes (NY) DB  
**Evening Grosbeak** All Reports: 31 May Lawrence DGP; 10 Mar Custer JSP; 6 Mar Custer KH

**Reports Requiring Acceptance by The Rare Bird Records Committee**

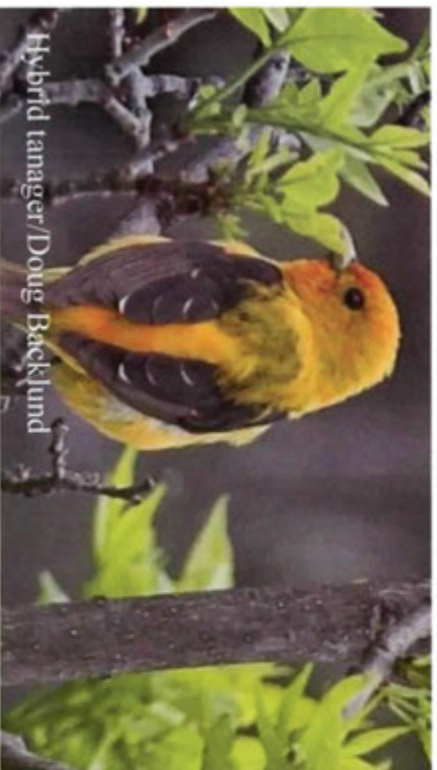
Eurasian Wigeon 3-7 Apr Yankton RD, JC, JSP, DC; Red-throated Loon 10 May Stanley KM; Snowy Egret 20 Apr Pennington MMM; Yellow-crowned Night-Heron 10-11 May Sanborn RGR, DC; Wood Stork 15 May Davison RBA; Mississippi Kite 16 May Davison JC, DS; Red-shouldered Hawk 19-20 Mar DB, RDO, KM; Swainson's Hawk 15 Mar Minnehaha JCS; Common Moorhen 18 May Union RBA; Snowy Plover 10-12 May Lake JSP, RFS, JC, DC, KM; 16 May Hughes RDO, KM; Killdeer 10 Apr Hughes (NE) DB; 26 Apr Gregory (NE) RM; Whimbrel 8 May Stanley KM; 13 May Sully KM; 14-15 May Custer MMM; 26 May Meade JLB; Western Sandpiper 6 May Butte VDF; Arctic Tern 12-15 May Stanley and Hughes DB, KM, RDO, DC; White-winged Dove Apr Edmunds fide DAT; Broad-tailed Hummingbird 20 May Lawrence DGP; Yellow-bellied Sapsucker 5 Mar Lake JSP; Scissor-tailed Flycatcher 22 May Bon Homme RM; Townsend's Solitaire 18 May Hughes KM; Hermit Thrush 31 May Meade APB; Wood Thrush 16 Apr Minnehaha JCS; Varied Thrush 28 May Lawrence DGP; Bohemian Waxwing 14 May Harding CEM; Nashville Warbler 31 May Minnehaha JCS; Worm-eating Warbler 9 May Brown DAT; Louisiana Waterthrush 25 May Lincoln JC; Mourning Warbler 26 May Meade DS; 29 May Harding CEM, KM; Hooded Warbler 8 May Union JC; 13 May Union DC; 17 May Stanley KM; 25 May Lincoln JC; Summer Tanager 14 Apr Minnehaha ETL, DC; Lark Bunting 9 Apr Mellette BFW; Henslow's Sparrow 28-29 May Miner JSP, DC, JC; Lincoln's Sparrow 11 Mar Fall River JSP; Black-headed Grosbeak 9-12 May Lake JSP; Eastern Meadowlark 1 Mar Brown JCS; 17 Mar Hyde NS; Eurasian Tree Sparrow Apr Beadle (found dead) fide DAT. **Corrections/Additions from Past Reports** Bullock's Oriole Delete Record: 14 May 2004 Faulk MMM

**Contributing Observers**

RBA Rare Bird Alert  
 APB Addison & Patricia Ball  
 DC Doug Chapman  
 VDF Vic & Donna Fondy  
 KCJ Kent C. Jensen  
 PEL Paul E. Lehman  
 MMM Michael M. Melius  
 KM Kenny Miller  
 RAP Richard A. Peterson  
 RFS Robert F. Schenck  
 WS Waubay NWR Staff  
 DS David Swanson  
 TBW Tom & Brenda Warren

DB Doug Backlund  
 AKB Anna K. Ball  
 RC Rick Clawges  
 KH Kevin Hachmeister  
 TJ Todd Jensen  
 ETL Eric T. Liknes  
 CEM Charlie Miller  
 RDO Ricky D. Olson  
 DGP D. George Prisbe  
 MS Mark Schmidtbauer  
 JCS Jerry C. Stanford  
 DAT Dan A. Tallman  
 MRZ Mick Zerr

JLB Jocelyn L. Baker  
 JC Jay Carlisle  
 RD Roger Dietrich  
 BFH Bill Huser  
 EK Elizabeth Krueger  
 RM Ron Mabie  
 EEM Ernest E. Miller  
 JSP Jeffrey S. Palmer  
 RGR Bob Rogers  
 NS Nancy Showalter  
 EDS Eileen Dowd Stukel  
 BFW Bridgette Flanders-Wanner



Hybrid tanager/Doug Backlund



Great Horned Owl & prairie-chicken/K. C. Jensen



Magnificent Hummingbird/Randy Podoll



Northern Saw-whet Owl/Lynne Williams