
SOUTH DAKOTA

Ornithologists' Union

Greater Sage Grouse

Butte County, SD

Photo: Doug Backlund



S O U T H



D A K O T A

B I R D

N O T E S

VOL. 59

March 2007

NO. 1

SOUTH DAKOTA BIRD NOTES, the official publication of the South Dakota Ornithologists' Union (organized 1949), is sent to all members whose dues are paid for the current year. Life members: \$320; Family life members (one subscription to Bird Notes): \$480; sustaining members: \$30; regular membership: \$16; Family membership (one household with one subscription to Bird Notes: \$20; Junior membership (10-16): \$8; Library Subscription: \$20; Single and back copies: Members, \$4; Non-members, \$5. All dues, payments, change of address notices and orders for back copies should be sent to the SDOU Treasurer, Nelda Holden, 1620 Elmwood Drive, Brookings, SD 57006. Manuscripts for publication should be sent to Douglas Chapman, 3108 S. Holly Ave., Sioux Falls, SD, 57105 or e-mailed to SFbirdclub@sio.midco.net. **SDOU website: www.sdou.org.**

Vol. 59

March 2007

NO. 1

SOUTH DAKOTA ORNITHOLOGISTS' UNION

Officers 2006 - 2007

President Rosemary Draeger 528 E. Lotta St., Sioux Falls, SD 57105
Vice-President ... Addison Ball 8462 Deerview Rd., Piedmont, SD 57769
Secretary David Swanson USD, Vermillion, SD 57069
Treasurer Nelda Holden 1620 Elmwood Drive, Brookings, SD 57006
Editor Douglas Chapman* 3108 S. Holly Ave., Sioux Falls, SD 57105
Librarian Jeffrey S. Palmer DSU, Madison, SD 57042
*Douglas Chapman assumed duties of office from Eric Liknes in October, 2007.

Elected Directors

For Term expiring 2007: Marie Curtin, Custer; Ron Martin, Sawyer, ND; Rosemary Draeger, Sioux Falls; and Duane Weber, Custer
For Term expiring 2008: Addison Ball, Piedmont; Jennifer Fowler, Rapid City; Kent Jensen, Brookings; Ron Mabie, Pickstown; and Erika Tallman, Northfield, MN.
For Term expiring 2009: Anna Ball, Piedmont; Linda Johnson, Sioux Falls; Eric Liknes, Aberdeen; Ricky Olson, Ft. Pierre; and Doug Backlund, Pierre.

Past President Directors

Jocelyn L. Baker, L. M. Baylor, Gilbert Blankespoor, Ken Graupmann, Byron Harrell, Bruce Harris, Nelda Holden, Todd M. Jensen, Jeffrey S. Palmer, Rex Riis, Dennis Skadsen, Robb Schenck, David Swanson, Dan Tallman, J. David Williams.

STANDING COMMITTEES OF SDOU:

Scholarship and Grants: Jocelyn L. Baker (chair), Nelda Holden, Galen Steffen
Nathaniel R. Whitney, Jr. Memorial Research Grant: Todd M. Jensen (chair), Linda Johnson, Duane Weber
Rare Birds: David Swanson (chair), Jeffrey S. Palmer, Ricky D. Olson, Todd M. Jensen, J. David Williams

BIRD NOTES STAFF:

PUBLICATIONS COMMITTEE: Douglas E. Chapman, Sioux Falls; Jocelyn L. Baker, Rapid City; Linda Johnson, Sioux Falls; Rosemary Draeger, Sioux Falls

Editor Douglas E. Chapman, Sioux Falls
History Editor L.M. Baylor, Rapid City
Youth Birding Editor Caity Reiland-Smith, Sioux Falls
Seasonal Reports Editor Jeffrey S. Palmer, Madison
Rare Bird Records Editor David Swanson, Vermillion
Photography Editor Doug Backlund, Pierre
Book Review Editor Dan Tallman, Northfield, MN
Birding Area Editor (Hot Spots Today) Ricky D. Olson, Ft. Pierre

PRESIDENT'S PAGE

In the last issue, Les Baylor related the story of the launch of *Bird Notes* in 1949 "to fulfill the need for statewide observation of bird life and dissemination of the information thus obtained." Nearly 60 years later, *Bird Notes* is continuing that mission, thanks to all of the contributors to our quarterly over the years. I don't know what the distant future holds for printed journals like *Bird Notes*. With the growth of online internet communications and the rising cost of printing and mailing, it might, down the road, join the ranks of increasing numbers of publications offered only online, but for the foreseeable future we can all enjoy the tactile and visual pleasure of holding it in our hands and perusing it leisurely while comfortably seated in an easy chair in the den. The more time I spend in front of my computer, the more I appreciate that comfortable chair in the den.



Thinking about costs for SDOU raises the very important organizational issue of membership. Over the years, membership has been steady but has slightly declined recently. How can we grow membership? How do people find out about SDOU? The first step is for every one of us current members to invite our non-member birding friends to join! Why join SDOU? Here are a few reasons to add to your own to encourage recruits: to gain new perspectives about birds from other birders around the state and to share a mutual enjoyment of birding; to learn about great birding spots in different areas of the state; to treat oneself to the lively educational opportunities SDOU membership provides through *Bird Notes*, through our semi-annual membership gatherings, through our website and online Seasonal Bird Observation Reporting database, and through rich friendships gained across the state; to join in the effort to build our body of knowledge about bird life in South Dakota; and to help give SDOU a stronger voice in matters of great importance to the long-term protection of birds and bird habitats statewide. A second step might be to find an SDOU member who would like to serve as Membership Chairperson, who would organize our efforts to get the word out that SDOU exists, that annual dues for an individual cost less than four medium lattes, and that the great benefit of membership is simply an enhanced enjoyment of our shared interest in the movement and behavior of birds across our state.

The inside cover of this and every issue of *Bird Notes* gives the treasurer's address for sending dues. And the mailing cover acts as an application/renewal form. Please hand mailing covers to potential members. It will make it easier to join. I challenge each of us to recruit one new member this year. Please let me know if you have additional ideas for attracting new members. Thanks.

See good birds.

Rosemary Draeger

FROM OUR PAST...

...IN SOUTH DAKOTA BIRD NOTES

L. M. BAYLOR

S*outh Dakota Bird Notes*—official publication of the South Dakota Ornithologists' Union—finally appeared as Vol. 1, No. 1, July 1949. Its title page featured H. Wayne Trimm's small black-and-white drawing of a Lark Bunting. The page also carried the list of officers for 1949: Herman F. Chapman, President; Dr. Gerald W. Spawn, Vice President; W. B. Mallory, Secretary; S. H. Rames, Treasurer; E. R. Lamster, Editor-Librarian. Also acknowledged were Executive Members Ruth Haberber, Chas. S. Hills, and J. O. Johnson; and the Chairman, Membership Committee, J. Scott Findley.

Several contributors to the first issue revealed a range of early bird study by members. Arthur R. Lunquist, in a feature article, "The Waubay Lake Colonies of Double-crested Cormorants," reported this colony's known history (as early as 1910), described the nesting activity in detail, and recounted his involvement with banding 1,472 juveniles. From the band recoveries, he determined that the cormorants migrated principally along the Mississippi River and that many of the banded birds returned to South Dakota.

Members privileged to know Herbert Krause remember him as exceptionally knowledgeable in many realms, but always with the attitude of a humble learner. The latter quality radiates from his article, "A Query on the Song of the Slate-colored Junco," in which he claimed, "I am the lowest among the beginners in the study of bird-lore." He then went on to wonder about the spring song of this junco. He described the song in detail and related his experiences with hearing it. Then in typical fashion for Herb, he concluded: "Perhaps this spring ditty is commonly heard here and elsewhere, and like the Junco's white tail-feathers my ignorance is showing."

In a section titled "Bird Notes of Special Interest," Kenneth Krumm, LaCreek Wildlife Refuge manager, indicated that 150 to 200 White Pelicans commonly nested at the refuge, along with a considerable number of Double-crested Cormorants. Krumm also reported a first record of an American Egret (Great Egret today) at the refuge, 25 August — 1 September 1948.

W. B. Mallory shared game warden F. H. Sundling's report of 14 pairs of nesting Wood Ducks along the Big Sioux River between Canton and Hudson, SD, presumably in 1949.

This section also included an item borrowed from *Iowa Bird Life* to the effect that a few Blue Grosbeaks nested east of Pickstown, SD. Perhaps the most remarkable item, borrowed from *The Nebraska Bird Review*, came from a resident of Washing-

Continued on page 13

EDITORIAL

*THE GREEN GRASS IS
NOT ALWAYS GREENER.*

The picture of me you find on this page shows me happily taking in several species of desert birds all at once: species which are found in extremely arid landscapes. There were four Le Conte's Thrashers (one singing), a singing "California" Sage Sparrow (*Amphispiza nevadensis canescens*), endemic to interior California and an interior Cactus Wren. I include a picture of the thrasher. Up the rocky slopes just to the right out of the picture, there were 8-10 Chukar blithely chortling away. The next day we were on the water on an exciting pelagic trip. Yes, indeed, we were in California: the two spots mentioned are Jawbone Canyon and Monterey Bay.



Photo: Michael Retter



*Le Conte's Thrasher.
Jawbone Canyon, Kern
County, CA. 10/17/2006.*

Photo: Michael Retter

While I enjoy birding far away places, I am always struck by how many really varied habitats we have here in South Dakota with an equal variety of birds. From the Lakes Region of the Northeast to the sage steppe of the Southwest, toss in the unique Black Hills and then take a drive through Ft. Pierre National Grasslands on to Newton Hills State Park and you

will find a wide variety of birds. Some of the best are also found in the stark beauty of Harding County habitats, so much like Jawbone Canyon.

Yes, California has great birds, and South America has great birds and Florida and

many more places, too. But we need not be jealous of other locations. Birds found here are as exciting and beautiful as most and much better than some. The "green" grass is NOT always greener elsewhere—sometimes it's bare and brown.

Bird on...

Doug Chapman

The Lennox, South Dakota, Breeding Bird Survey
by Dr. Gilbert Blankespoor

Introduction

The North American Breeding Bird Survey, administered by the USGS Patuxent Wildlife Research Center and initiated in 1966, is a massive effort to monitor breeding bird populations in the United States and Canada. Currently, there are approximately 3700 established BBS routes. The roadside-based surveys include the following standardized elements: (1) surveys are conducted in late spring or early summer; (2) stops are made at 0.5 mile intervals along a 25-mile, largely linear route; (3) at each stop, for 3 minutes, all individual birds seen and/or heard are recorded; (4) weather information is recorded during the time of the survey. Results and analyses for the North American Breeding Bird Survey are available to the general public over the internet (Sauer, *et al.* 2006).

In South Dakota, in 2006, there were 61 routes (Fig. 1), of which 36 were surveyed. Laura Hubers, Wildlife Biologist, Waubay National Wildlife Refuge is the State Coordinator. The Lennox route was first surveyed in 1967 and has been surveyed every year since except for the years 1992, 1994, and 1995. The Lennox route begins one mile south of the town of Lennox and then extends due north.

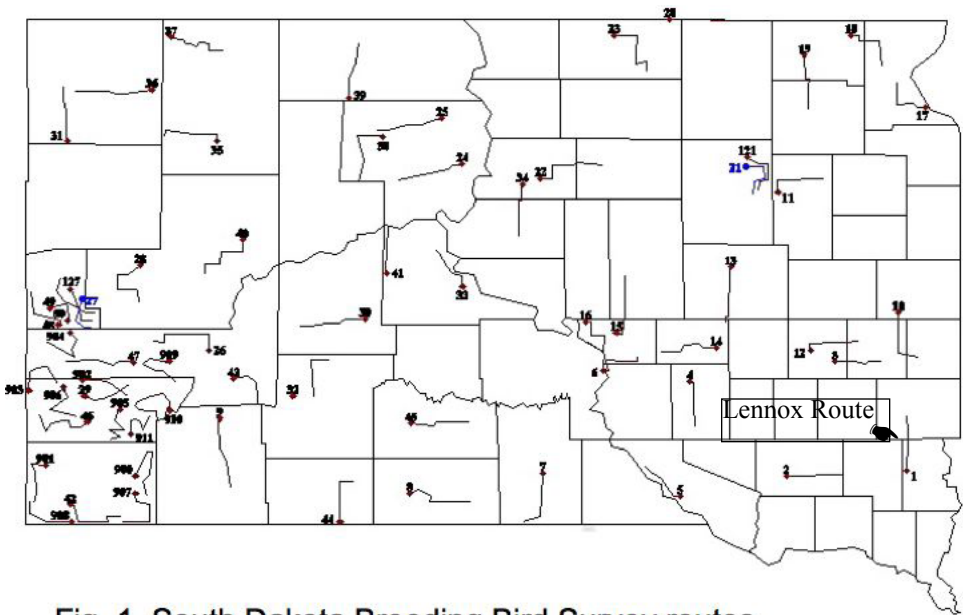


Fig. 1. South Dakota Breeding Bird Survey routes

Lennox BBS Information

Land Cover

Most of the area surrounding the Lennox route supports row crops, principally corn and soybeans (Fig. 2). There are scattered examples of wetlands, pastures, and hay fields. The only woodland habitat is provided by the farmsteads which punctuate the landscape.

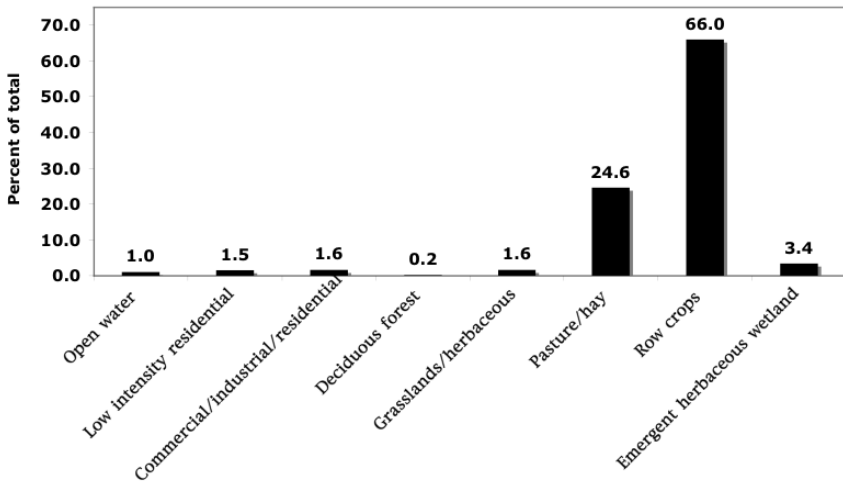


Fig. 2. Land cover values for the Lennox BBS area.

Species/individual abundance

The cumulative total number of species for the 36 years of surveys was 104 species. The mean number of species recorded per survey was 48.4 ± 5.36 SD species (minimum = 34 species; maximum = 62 species). The number of species increased significantly between 1967 and 2005 (Fig. 3; $p < .05$). The mean number of individuals for the 36 surveys was 981.9 ± 114.73 SD individuals (minimum = 761 individuals; maximum = 1256 individuals). The number of individuals decreased significantly between 1967 and 2005 (Fig. 4; $p < .05$)

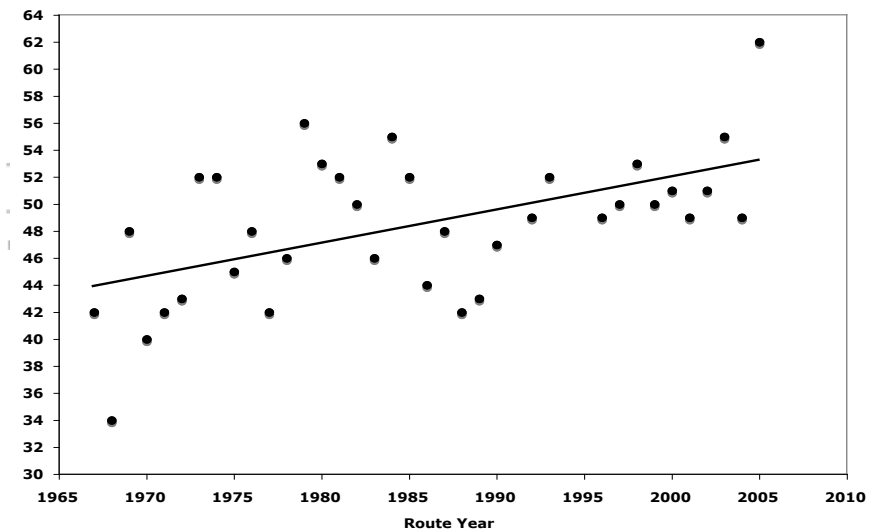


Fig. 3. Number of species, 1967 through 2005.

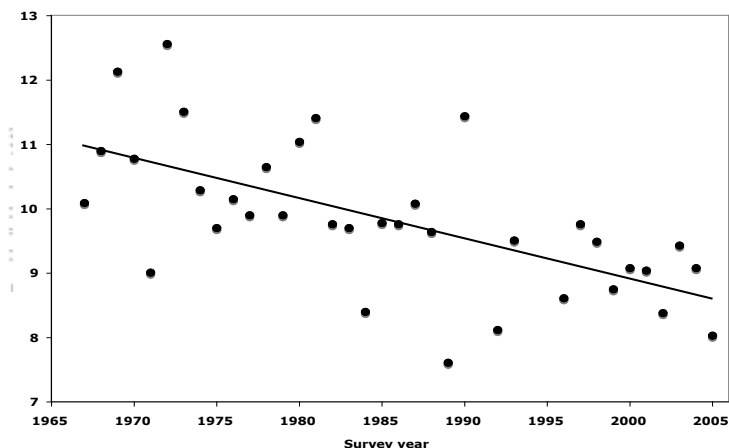


Fig. 4. Number of individuals, 1967 through 2005

The number of individuals/species averaged across the 36 surveys varied from a high of 186.94 individuals to a low of 0.03 individuals. Numbers of individuals for the 15 most abundant species are given in Fig. 5. A number of species were recorded only once (*Canvasback*, *Lesser Scaup*, *Hooded Merganser*, *Double-crested Cormorant*, *Marbled Godwit*, *Ring-billed Gull*, *Great Horned Owl*, *Burrowing Owl*, *Short-eared Owl*, *Hairy Woodpecker*, *Eastern Wood-Pewee*, *White-breasted Nuthatch*, *Eastern Bluebird*, *Clay-colored Sparrow*) or twice (*American Wigeon*, *Great Blue Heron*, *Common Nighthawk*, *Belted Kingfisher*, *Least Flycatcher*, *Eastern Phoebe*, *Red-eyed Vireo*, *Cedar Waxwing*) during the surveys.

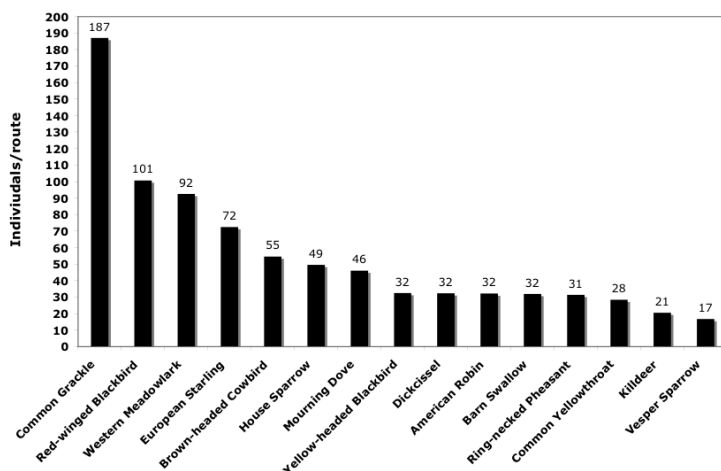


Fig. 5. The 15 most common species on the Lennox BBS.

The BBS has established the following breeding guild categories: (1) grassland; (2) successional and scrub; (3) wetland; (4) woodland; (5) urban. Breeding guild affinities for the Lennox BBS are given in Table 1.

<u>Guild</u>	<u>Number of species</u>
Grassland	20
Successional and scrub	18
Wetland	34
Woodland	18
Urban	14

Table 1. Breeding guild affinities for the species in the Lennox BBS

The essential goal of the North American Breeding Bird Survey is to monitor population size changes in species of North American birds. Since the Lennox BBS has continued now for almost 40 years, the data available should provide a reliable index of what has been happening to breeding bird population size in the restricted area of the survey. Population trends for the Lennox BBS are presented in Table 2.

<u>Increasing trend</u>		<u>Decreasing trend</u>	
Canada Goose	(+)	Northern Pintail	(0)
Wood Duck	(0)	Upland Sandpiper	(-)
Red-tailed Hawk	(+)	Franklin's Gull	(0)
Eastern Kingbird	(-)	Mourning Dove	(-)
American Crow	(+)	Red-headed Woodpecker	(-)
Tree Swallow	(+)	Northern Flicker	(-)
Marsh Wren	(+)	Western Kingbird	(0)
American Robin	(+)	Purple Martin	(0)
Chipping Sparrow	(+)	Barn Swallow	(0)
Song Sparrow	(+)	European Starling	(0)
Baltimore Oriole	(0)	Lark Bunting	(-)
House Finch	(+)	Swamp Sparrow	(+)
American Goldfinch	(0)	Grasshopper Sparrow	(-)
		Western Meadowlark	(-)
		Brown-headed Cowbird	(-)

Table 2. Lennox BBS species with either increasing or decreasing population trends. Region¹ trends (increasing, no trend, decreasing) for these same species are indicated with the use of (+), (0), and (-) symbols. Trends are statistically significant at $p \leq .05$)².

¹BBS Central Region – Mississippi River to Rocky Mountains

²Disclaimer for route trends: single-site analysis – variance may not be valid.

Disclaimer for regional trends: data for some species may be deficient in some way – caution required.

Conclusions

All of the data sets from Lennox BBS are interesting but they are not all equally informative. Descriptive data such as is found in Figs. 2 & 5 and Table 1 is unequivocally informative since it represents what actually was the case along the route. The trend analyses, as found in Figs. 3 & 4 and Table 2, although potentially more interesting and important, have to be assessed with some caution. That's because, in some cases, one or more assumptions for the valid application of statistical procedures are not met. However, when a region trend is consistent with a route trend as was often the case (Table 2), one's confidence in the reality of the route trend is substantially increased.

Although answers to “what” questions are relatively easy to obtain, answers to “why” questions present a considerable challenge. For example, regarding the Lennox BBS data, one might want to correlate bird changes with habitat context changes that have taken place along the route. Indeed, there have been a number of such habitat changes; for example, fewer pastures, fewer small grain fields, fewer farmsteads, fewer farmsteads with livestock, fewer line fences, more hard-surface roads, more urban development, global warming. Really good data on such habitat changes would have to be available before efforts at correlation could be made. Even if valid correlations could be made, there would remain the challenge of defining cause-and-effect relationships. In the context of the bird survey data, attempts to answer “why” questions are largely exercises in speculation.

Reference

Sauer, J. R., J. E. Hines, and J. Fallon. 2006. The North American Breeding Bird Survey, Results and Analysis, 1966 – 2006 Version 6.2.2006. USGS Patuxent Wildlife Research Center, Laurel, MD

Gilbert W. Blankespoor
1004 Savannah Dr.
Sioux Falls, SD 57103

Western Meadowlarks are one of the most delightful signs of spring in South Dakota. The scientific name is Sturnella neglecta. There is a rumor that this is because Lewis and Clark “neglected” to find them. That would have been impossible. And as a matter of record, the Corps refers to them often, using the name Old Field Lark.

Gouache over watercolor wash. 12/10/04

Artwork: Michael Retter



GENERAL NOTES

JUNE HARTER WATERFOWL AREA HONORS FORMER EDITOR OF SOUTH DAKOTA BIRD NOTES

On 2 June 2005, the U.S. Fish and Wildlife Service and the family of June Harter dedicated the June Harter Waterfowl Production Area in Hyde County, South Dakota. Establishment of this memorial to the former editor of *South Dakota Bird Notes* resulted from the generous efforts of June's son and three daughters and from the alertness of U.S. Fish and Wildlife personnel at the Huron Wetland Management District. Realizing the area's potential to enhance waterfowl production in Hyde County, they endeavored to secure the land for that purpose.



June Harter 1914 - 2002

The area will provide suitable habitat for many non-game species as well as waterfowl. When in the vicinity, SDOU members may want to visit the June Harter unit, consisting of nine quarter sections from the Harter family ranch south of Highmore, SD, in Eagle Township. Additionally, some members may wish to assist the USF&WS Wetland Management District at Huron, SD, to develop additional information about non-game birds that utilize the production area. ~ *L.M. Baylor, Rapid City*

I WAS THERE!

In one of those serendipitous moments that life provides on occasion, on 1 June 2005, I happened to be on my way to Minot, ND, to meet birders from Florida to lead a "North Dakota Prairies" birding tour. Driving west of Miller and seeing intimidating lightning storms in the distance and with night approaching, I decided that if there were a motel in Highmore, I would spend the night and hope for sunshine in the morning to continue on.

As I was watching television in the Prairie View Motel, Highmore's only motel, I saw that there was a local crawl on the bottom of the screen occasionally. It gave local events and news. As I was thinking how great a service that was for a town obviously too small for a station of its own, I read that the next morning, Saturday, 2 June 2005, there would be a celebration dedicating the June Harter Waterfowl Production Area nine miles south of town.

I had only read of June Harter, as my very first issue of *South Dakota Bird Notes* was the issue with her photo on the cover, though reading her obituary by Les Baylor was a good introduction. I was therefore thrilled to attend the dedication. It delayed me just a little getting to Minot, but I was glad to be there. ~ *Douglas Chapman, Sioux Falls*

Be sure to visit a wonderfully complete story of this area at:
http://www.tiac.net/~cri_c/june/brochure.html



A Black-headed Gull has appeared each fall for several years now at the extreme Northwest corner of Big Spirit Lake, Iowa, much as Barrow's Goldeneye(s) are reliable on Canyon Lake in Rapid City, of which Jocie Baker keeps us informed. South Dakota still has no record of this rarity. Be on the lookout—it could show up any time as our next state record. Dickenson County, IA. 9/30/05

Photo: Jay Gilliam

The “White-winged” Junco is a subspecies of the Dark-eyed Junco, though formerly it was considered a separate species. It breeds nearly exclusively in the Black Hills of South Dakota and Wyoming. There is recently some evidence that it breeds in Nebraska's Pine Hills in low numbers. Colored pencil. 10/1/02.

Artwork: Michael Retter



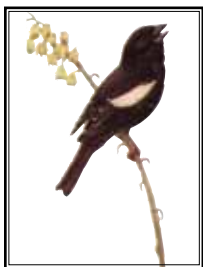
ton, D.C. While traveling on US 16 near Pukwana, SD, he observed a Yellow Rail in a slough near the highway.

Two biographical articles appear in this issue of *Bird Notes*. Today the term “Over” evokes thought of the museum’s title at the University of South Dakota. E. P. Churchill’s tribute, “William H. Over: Dean of South Dakota Naturalists,” makes us aware the Dr. Over was much more than just the museum’s curator. From the article we infer that Over was an early twentieth century pioneer in the study of South Dakota’s flora and fauna.

Another pioneer of early twentieth century biology in South Dakota, especially in ornithology, was Stephen S. Visser. His interest in birds evolved in the 1890s. As the son of homesteaders in Sanborn County, he verified 150 avian species near his home. At the request of President Herman Chapman, Visser wrote, “Bird Study in South Dakota” for the first issue of SDOU’s journal. He stressed the opportunities for study due to the diversity of habitats throughout the state that make possible a wide distribution of bird life. Editor Lamster appended a bibliography of Visser’s numerous publications about birds in South Dakota to the article.

Also in this issue, we have another focus on bird study for our state. In “Opportunity—Challenge,” O. S. Pettingill, Jr., Professor of Zoology, Carleton College, Northfield, MN, expressed his pleasure with the establishment of SDOU and emphasized the need for systematic study of prairie birds, especially to clarify the ranges for various species.

In a letter that Editor Lamster titled: “An Emblem for the Union,” Dr. Pettingill raised the issue of selecting an official emblem for SDOU. He suggested the Lark Bunting, his favorite “prairie songster,” as representative of the prairie. Today, members know H. Wayne Trimm’s color rendition of the Lark Bunting as our emblem.



As well as publication of SDOU’s initial Constitution and By-Laws in Vol. 1, No. 1 of *Bird Notes*, the editor included the “Charter Membership Roll of South Dakota Ornithologists’ Union.” It lists Dr. W. H. Over as an honorary member, 150 active members and 14 junior members (ages 12-16). According to our current SDOU Treasurer, Nelda Holden, only two charter members continued as members in 2006: Bruce Harris and Lester R. Lauritzen. If any reader believes a current charter member has been overlooked, please notify the editor. ~L. M. Baylor, Rapid City

SEASONAL REPORTS

The 2006 Fall Season

Compiled By: Jeffrey S. Palmer

01 August 2006 to 30 November 2006

College of Arts & Sciences
Dakota State University
Madison, SD 57042

There were 298 species reported during the 2006 Fall Season. The 10-year average (1996-2005) is 302. Below, I have tried to highlight the more significant sightings (dates that are earlier/later than listed in *Birds of South Dakota* by Tallman, Swanson, and Palmer and species that are significantly out of range). For early/late migration dates, I have listed the three earliest/latest dates (by county). However, if these did not include a sighting East River, West River, and along the Missouri River, I have included the earliest/latest reported date from the missing region also. Included at the end of this report is a list of species that were not reported this year but might be expected during the Fall Season. A species is placed on the list if it was not reported this year but had been reported during fall in at least 2 of the previous 5 years. Numbers in parentheses indicate the number of consecutive years (up to 4) that the species has appeared on the list during the season. **Blue-winged Warbler** has not been reported for the past five fall seasons and was removed from the list.

Greater White-fronted Goose All Reports: 31 Oct Stanley RDO; 01 Nov Charles Mix RM; 02 Nov Stanley KM; 03 Nov Pennington JLB; 04 Nov Kingsbury JSP; 04 Nov Stanley RDO; 26 Nov Stanley KM

Snow Goose Early: 26 Aug Kingsbury JSP; 26 Oct Grant BJU; 31 Oct Minnehaha MS; 31 Oct Stanley RDO; 31 Oct Charles Mix RM ... Late: 26 Nov Stanley KM; 26 Nov Hughes RDO; 24 Nov Kingsbury JSP; 24 Nov Brown MRZ; 24 Nov Charles Mix RM

Ross's Goose Early: 31 Oct Stanley RDO; 03 Nov Pennington JLB; 10 Nov Day MO ... Late: 26 Nov Stanley KM; 26 Nov Hughes RDO; 16 Nov Roberts BJU; 16 Nov Day BJU

Cackling Goose Early: **16 Oct Grant BJU; 30 Oct Roberts BJU**; 31 Oct Stanley RDO

Trumpeter Swan Confirmed Breeding: 14 Aug Tripp (FL) DB ... also reported 28 Oct Tripp RDO

Tundra Swan Early: 16 Oct Deuel BJU; 23 Oct Day WS; 02 Nov Hughes KM; 02 Nov Stanley RDO ... Late: 16 Nov Grant BJU; 16 Nov Day BJU

Wood Duck Late: 30 Nov Pennington JLB; 20 Nov Stanley RDO; 09 Oct Hughes KM; 07 Oct Minnehaha JSP

Gadwall Late: 30 Nov Pennington JLB; 26 Nov Stanley DB; 24 Nov Kingsbury JSP; 24 Nov Hughes DB

American Wigeon Late: 30 Nov Pennington JLB; 24 Nov Kingsbury JSP; 21 Nov Charles Mix RM

Blue-winged Teal Late: 20 Nov Stanley RDO; 11 Oct Meade JLB; 16 Sep Kingsbury JSP

Cinnamon Teal Only Report: **12 Oct Grant BJU**

Northern Shoveler Late: 24 Nov Kingsbury JSP; 20 Nov Stanley RDO; 17 Nov Day WS, MO; 01 Nov Meade JLB

Northern Pintail Late: 24 Nov Kingsbury JSP; 16 Nov Day BJU; 14 Nov Charles Mix RM; 13 Nov Butte JLB

Green-winged Teal Late: 25 Nov Charles Mix RM; 18 Nov Kingsbury JSP; 16 Nov Day BJU; 03 Nov Pennington JLB

Canvasback Late: 20 Nov Stanley RDO; 16 Nov Pennington JLB; 16 Nov Grant BJU; 16 Nov Day BJU

Redhead Late: 30 Nov Pennington JLB; 26 Nov Stanley DB; 25 Nov Harding KM; 16 Nov Day BJU

Ring-necked Duck Late: 30 Nov Pennington JLB; 16 Nov Grant BJU; 16 Nov Day BJU; 04 Nov Stanley RDO

Greater Scaup Early: 26 Oct Grant BJU; 01 Nov Stanley RDO; 11 Nov Yankton BFH ... Late: 20 Nov Stanley RDO; 17 Nov Day MO

Lesser Scaup Late: 30 Nov Pennington JLB; 24 Nov Kingsbury JSP; 24 Nov Hughes DB

Surf Scoter All Reports: 16 Oct Grant BJU; 04-08 Nov Stanley RDO, KM; 11 Nov Yankton BFH; 11 Nov Charles Mix RM

White-winged Scoter All Reports: **12 Oct Stanley RDO; 16 Oct Grant BJU**; 16 Nov Day BJU

Long-tailed Duck Early: **22 Oct Hughes RDO; 22 Oct Stanley DB**; 16 Nov Day BJU; 25 Nov Harding KM ... Late: 26 Nov Hughes RDO; 08 Nov Stanley RDO

Bufflehead Early: 20 Sep Day MO; 09 Oct Pennington JLB; 11 Oct Meade JLB; 14 Oct Stanley DB; 14 Oct Sully KM

Common Goldeneye Early: 26 Oct Pennington JLB; 28 Oct Kingsbury JSP; 30 Oct Roberts BJU; 31 Oct Stanley RDO

Barrow's Goldeneye Early: **05 Nov Pennington JLB**

Hooded Merganser Early: 01 Aug Deuel BJU; 12 Oct Pennington JLB; 13 Oct Stanley KM ... Late: 30 Nov Pennington JLB; 24 Nov Hughes DB; 20 Nov Stanley RDO; 18 Nov Kingsbury JSP

Common Merganser Early: 30 Aug Pennington JLB; 28 Oct Stanley KM; 11 Nov Kingsbury JSP

Red-breasted Merganser All Reports: 09 Nov Charles Mix RM; 10 Nov Day MO; **16 Nov Day BJU**; 26 Nov Hughes RDO; 30 Nov Charles Mix RM

Ruddy Duck Late: 24 Nov Kingsbury JSP; 20 Nov Stanley RDO; 17 Nov Day MO; 03 Nov Pennington JLB

Gray Partridge All Reports: 01 Aug Meade EEM; 10 Aug Harding CEM; 05 Oct Custer MMM; 20 Oct Harding CEM; 16 Nov Pennington AKB

Greater Sage-Grouse All Reports: 02 Aug Harding KM; 02 Aug Butte CEM; 03 Aug Harding KM; 30 Aug Butte CEM

Greater Prairie-Chicken All Reports: 04 Aug Stanley DB; 14 Aug Tripp DB; 19 Aug Jones DB; 09 Sep Jones DB; 01 Oct Stanley DB; 25 Nov Lyman DB

Northern Bobwhite Only Report: 27 Aug Union BFH

Pacific Loon Only Report: **15 Oct** – 02 Nov **Hughes** and Stanley **RDO, KM, DB, JSP, MS**

Common Loon Early: 19 Sep Charles Mix RM; 14 Oct Sully KM; 21 Oct Yankton BFH; 28 Oct Kingsbury JSP ... Late: 18 Nov Kingsbury JSP; 04 Nov Sully KM; 30 Oct Roberts BJU

Pied-billed Grebe Late: 18 Nov Hughes KM; 16 Nov Day BJU; 09 Nov Pennington JLB

Horned Grebe Early: 21 Sep Grant BJU; 21 Sep Charles Mix RM; 23 Sep Kingsbury JSP; 09 Oct Meade JLB ... Late: 16 Nov Day BJU; 10 Nov Hughes KM; 14 Oct Kingsbury JSP

Red-necked Grebe Only Report: **03 Nov Sully KM**

Eared Grebe Late: 12 Nov Clay DS; 28 Oct Minnehaha MRZ; 27 Oct Sully RDO; 15 Oct Meade JLB

Western Grebe Late: 18 Nov Kingsbury JSP; 16 Nov Pennington JLB; 13 Nov Butte JLB; 11 Nov Sully KM

Clark's Grebe Only Report: 20 Sep Day MO

American White Pelican Late: 26 Nov Perkins KM; 24 Nov Kingsbury JSP; 18 Nov Yankton DS

Double-crested Cormorant Late: 25 Nov Charles Mix RM; 17 Nov Day MO; 11 Nov Sully KM; 23 Oct Meade JLB

American Bittern All Reports: 22 Oct Stanley DB; 21 Oct Stanley MS; 15 Oct Stanley DB; 14 Oct Stanley DB; 27 Aug Union BFH

Great Blue Heron Late: 26 Nov Hughes RDO; 25 Nov Gregory RM; 24 Nov Kingsbury JSP; 08 Oct Custer MMM

Great Egret Late: 14 Oct Kingsbury JSP; 07 Oct Minnehaha JSP; 17 Sep Bon Homme RM

Snowy Egret All Reports: 04 Sep Hamlin BFH; 26 Aug Kingsbury JSP

Cattle Egret All Reports: 03 Sep Hughes RDO, KM; 02 Sep Kingsbury JSP

Green Heron All Reports: 19 Aug Moody JSP; 19 Aug Minnehaha MS

Black-crowned Night-Heron All Reports: 04 Sep Hamlin BFH; 02 Sep Kingsbury JSP; 19 Aug Minnehaha MS; 18 Aug Stanley DB

White-faced Ibis All Reports: 07 Oct Minnehaha JSP; 18 Sep Roberts MO; 04 Sep Hamlin BFH; 25 Aug Day MO; 07 Aug Grant BJU

Turkey Vulture Late: 20 Oct Lincoln MRZ; 07 Oct Minnehaha JSP; 05 Oct Pennington JLB; 03 Oct Hughes DB

Osprey Late: 09 Nov Charles Mix RM; 23 Sep Kingsbury JSP; 18 Sep Roberts MO; 10 Sep Meade JLB

Northern Harrier Late: 30 Nov Charles Mix RM; 24 Nov Kingsbury JSP; 19 Nov Meade AKB

Sharp-shinned Hawk Early: 02 Sep Hughes KM; 23 Sep Kingsbury JSP; 01 Oct Stanley KM

Northern Goshawk All Reports: 15 Oct Sully KM; 20 Nov Faulk MMM

Broad-winged Hawk All Reports: 27 Sep Stanley KM; 20 Sep Day MO; 09 Sep Kingsbury JSP; 24 Aug Meade EEM

Swainson's Hawk Late: 30 Oct Roberts BJU; 23 Sep Kingsbury JSP; 02 Sep Harding DB; 06 Sep Gregory RM

Ferruginous Hawk Late: 30 Nov Pennington JLB; 13 Nov Butte JLB; 04 Nov Sully KM

Rough-legged Hawk Early: 07 Oct Harding CEM; 17 Oct Pennington MMM; 30 Oct Roberts BJU; 04 Nov Sully KM

Golden Eagle Early: 15 Oct Sully KM; 25 Nov Lyman DB

Merlin Early: **16 Aug Lake JSP**; 28 Aug Hughes DB; 10 Sep Sully KM

Gyrfalcon Only Report: 16 Nov Grant BJU

Peregrine Falcon All Reports: **20 Aug Brown GO**; **24 Aug Minnehaha DS**; **27 Aug Sully RDO**; 30 Sep Clay DS; 02 Oct Sully RDO; 07 Oct Custer MMM

Prairie Falcon Early: 05 Aug Sully RDO; 20 Aug Stanley DB; 14 Sep Day MO

Virginia Rail Only Report: 12 Aug Brown GO

Sora All Reports: 15 Oct Stanley DB; 05 Sep Hughes KM; 04 Sep Brookings BFH; 13 Aug Hughes KM; 12 Aug Brown GO

American Coot Late: 30 Nov Pennington JLB; 24 Nov Kingsbury JSP; 16 Nov Day BJU; 05 Nov Charles Mix RM

Sandhill Crane Early: 20 Sep Charles Mix RM; 27 Sep Custer MMM; 29 Sep Haakon; 28 Oct Kingsbury JSP ... Late: 16 Nov Day BJU; 02 Nov Meade AKB; 31 Oct Charles Mix RM

Whooping Crane Only Report: 22 Oct Day WS

Black-bellied Plover Early: **03 Aug Sully RDO**; **07 Aug Grant BJU**; **12 Aug Brown GO** ... Late: 28 Oct Kingsbury JSP; 27 Oct Sully RDO; 18 Oct Stanley RDO

American Golden-Plover Early: 20 Sep Day MO; 29 Sep Charles Mix RM; 02 Oct Sully RDO ... Late: **11 Nov Kingsbury JSP**; 10 Nov Day MO; 21 Oct Sully KM

Semipalmated Plover Late: **16 Oct Deuel BJU**; **14 Oct Kingsbury JSP**; 02 Oct Sully RDO; 26 Aug Meade JLB

Piping Plover All Reports: 15 Aug Sully RDO; 05 Aug Sully RDO; 03 Aug Sully RDO

Killdeer Late: 30 Nov Pennington JLB; 30 Oct Roberts BJU; 28 Oct Minnehaha MRZ; 27 Oct Sully RDO, KM

American Avocet Late: 28 Oct Kingsbury JSP; 27 Oct Sully RDO; 06 Sep Meade JLB

Greater Yellowlegs Late: 04 Nov Kingsbury JSP; 29 Oct Clay DS; 27 Oct Sully RDO, KM; 23 Oct Meade JLB

Lesser Yellowlegs Late: 29 Oct Sully KM; 29 Oct Clay DS; 26 Oct Grant BJU; 15 Oct Meade JLB

Solitary Sandpiper Late: 29 Sep Charles Mix RM; 09 Sep Kingsbury JSP; 26 Aug Meade JLB

Willet Late: 23 Sep Kingsbury JSP; 10 Sep Sully KM; 18 Aug Harding KM

Spotted Sandpiper Late: 29 Sep Charles Mix RM; 18 Sep Stanley RDO; 09 Sep Kingsbury JSP; 30 Aug Pennington JLB

Upland Sandpiper Late: **12 Sep Custer MMM**; 19 Aug Jones DB; 12 Aug McCook JSP; 06 Aug Sully KM

Marbled Godwit Late: 23 Sep Kingsbury JSP; 30 Aug Meade JLB; 16 Aug Brown GO; 13 Aug Sully RDO

Sanderling Early: 03 Aug Sully RDO; 26 Aug Kingsbury JSP; 08 Sep Hughes KM ... Late: **28 Oct Kingsbury JSP**; 27 Oct Sully RDO; 18 Sep Stanley RDO

Semipalmated Sandpiper Late: 09 Oct Sully RDO; 06 Sep Meade JLB; 19 Aug Moody JSP; 19 Aug Minnehaha MS

Least Sandpiper Late: 28 Oct Kingsbury JSP; 27 Oct Sully RDO; 07 Oct Minnehaha JSP; 06 Sep Meade JLB

Baird's Sandpiper Late: **04 Nov Kingsbury JSP**; 27 Oct Sully RDO; 15 Oct Meade JLB

Pectoral Sandpiper Late: **11 Nov Kingsbury JSP**; 29 Oct Sully KM; 26 Oct Grant BJU; 26 Oct Deuel BJU; 26 Aug Meade JLB

Dunlin Only Report: 19 Aug Minnehaha MS

Stilt Sandpiper Late: **28 Oct Kingsbury JSP**; **27 Oct Sully RDO**; 07 Oct Minnehaha JSP; 26 Aug Meade JLB

Buff-breasted Sandpiper Early: 05 Aug Sully RDO; 19 Aug Minnehaha MS; 20 Aug Lake JSP ... Late: 04 Sep Deuel BJU; 13 Aug Sully RDO

Short-billed Dowitcher All Reports: 27 Oct Sully RDO; 04 Sep Hamlin BFH; 23 Aug Grant BJU; 05 Aug Sully RDO; 03 Aug Sully RDO; 01 Aug Deuel BJU

Long-billed Dowitcher Late: 29 Oct Sully KM; 29 Oct Clay DS; 28 Oct Kingsbury JSP; 26 Aug Meade JLB

Wilson's Snipe Late: 13 Nov Day WS; 04 Nov Clay DS; 30 Oct Roberts BJU; 22 Oct Jones DB

American Woodcock All Reports: 15 Oct Hughes EDS; 12 Oct Hughes KM; 22 Sep Sully RDO; 20 Aug Stanley RDO

Wilson's Phalarope Late: 02 Sep Miner JSP; 27 Aug Sully RDO; 26 Aug Meade JLB

Red-necked Phalarope Late: 24 Sep Union BFH; 22 Sep Sully RDO; 19 Sep Brown MO

Franklin's Gull Late: 16 Nov Grant BJU; 28 Oct Minnehaha MRZ; 28 Oct Kingsbury JSP; 17 Oct Stanley RDO; 10 Sep Meade JLB

Bonaparte's Gull Early: 23 Sep Buffalo RDO; 09 Oct Meade JLB; 09 Oct Stanley KM; 14 Oct Kingsbury JSP ... Late: 27 Nov Charles Mix RM; 26 Nov Hughes RDO; 24 Nov Stanley DB; **24 Nov Kingsbury JSP**; 09 Nov Pennington JLB

Mew Gull All Reports: **13 Oct Stanley RDO**; 17 Nov Stanley RDO; 26 Nov Hughes RDO

Ring-billed Gull Late: 30 Nov Charles Mix RM; 26 Nov Hughes RDO; 24 Nov Stanley DB; 24 Nov Kingsbury JSP; 01 Nov Meade JLB

California Gull Late: **16 Nov Day BJU**; 18 Sep Stanley RDO; 18 Sep Roberts MO

Herring Gull Early: 18 Sep Stanley RDO; 20 Oct Lyman JSP; 21 Oct Yankton BFH; 28 Oct Kingsbury JSP

Thayer's Gull All Reports: 17 Oct Stanley RDO; 11 Nov Yankton BFH; 26 Nov Hughes RDO

Lesser Black-backed Gull All Reports: **13 Aug Sully RDO**; **03 Sep Hughes KM, RDO**; 26 Nov Hughes RDO

Glaucous Gull Only Report: **16 Nov Day BJU**

Sabine's Gull Only Report: 18 Sep Stanley RDO

Caspian Tern All Reports: 19 Sep Brown MO; 26 Aug Meade JLB; 07 Aug Stanley RDO; 01 Aug Stanley RDO

Common Tern Late: 20 Sep Day MO; 15 Sep Lyman KM; 15 Sep Buffalo RDO; 10 Sep Meade JLB

Forster's Tern Late: 17 Oct Stanley RDO; 30 Sep Kingsbury JSP; 15 Sep Lyman KM; 15 Sep Buffalo RDO; 18 Aug Harding KM

Least Tern Only Report: 01 Aug Stanley RDO

Black Tern Late: 15 Sep Lyman KM; 15 Sep Buffalo RDO; 02 Sep Kingsbury JSP; 01 Sep Harding CEM

Eurasian Collared-Dove reported from Charles Mix, Faulk, Grant, Hughes, Kingsbury, Lake, McCook, Meade, Pennington, Stanley, and Yankton counties

Mourning Dove Late: 11 Nov Meade EEM; 28 Oct Minnehaha MRZ; 26 Oct Hughes KM; 26 Oct Tripp RM

Barn Owl All Reports: 01 Sep Charles Mix RM; 09 Sep Sully KM; 06 Aug Sully KM; **08 Nov Charles Mix RM**

Snowy Owl Only Report: 25 Nov Harding KM

Burrowing Owl Late: 01 Oct Stanley RDO; 01 Oct Jones DB; 30 Sep Pennington KM; **09 Sep Kingsbury JSP**

Long-eared Owl All Reports: 06 Aug Day WS; 22 Aug Day WS; 22 Oct Sully KM; 29 Oct Sully KM; 24 Nov Stanley DB

Short-eared Owl All Reports: 19 Aug Meade AKB; 16 Nov Roberts BJU; 30 Nov Day WS

Northern Saw-whet Owl All Reports: 02 Sep Harding DB; 05 Oct Harding CEM; 27 Oct Sully KM; 29 Oct Harding CEM; 22 Nov Harding KM; 26 Nov Sully DB

Common Nighthawk Late: 09 Sep Lake JSP; 05 Sep Meade AKB; 05 Sep Aurora RM; 31 Aug Hughes KM

Common Poorwill All Reports: 02 Sep Harding DB; 21 Aug Harding CEM; 13 Aug Meade APB; 03 Aug Harding KM, CEM

Chuck-will's-widow Only Report: **07 Aug Stanley RDO**

Whip-poor-will Only Report: 09 Sep Sully KM

Chimney Swift Late: 22 Sep Lake JSP; 25 Aug Day MO; 19 Aug Moody JSP; 18 Aug Pennington JLB; 16 Aug Hughes KM

White-throated Swift All Reports: 02 Sep Harding CEM; 04 Aug Harding KM, CEM

Ruby-throated Hummingbird Late: 06 Oct Lake KB; 25 Sep Minnehaha MRZ; 22 Sep Clay DS; 12 Aug Pennington RDO

Calliope Hummingbird Only Report: 12 Aug Pennington RDO

Rufous Hummingbird Late: **21 Aug Pennington JLB**; 01 Aug Meade EEM

Belted Kingfisher Late: 20 Nov Pennington JLB; 19 Nov Hughes KM; 22 Oct Stanley DB; 22 Oct Minnehaha MRZ

Lewis's Woodpecker Only Report: 21 Aug Custer JLB

Red-headed Woodpecker Late: 30 Oct Roberts BJU; 15 Oct Lincoln MRZ; 16 Sep Stanley RDO; 28 Aug Pennington JLB

Yellow-bellied Sapsucker All Reports: 09 Oct Minnehaha MRZ; 26 Sep Stanley DB; 19 Aug Moody JSP

Red-naped Sapsucker Only Report: 21 Aug Pennington JLB

Black-backed Woodpecker Only Report: 29 Oct Meade AKB

Pileated Woodpecker All Reports: 04 Aug Roberts GO; 25 Aug Roberts MO

Olive-sided Flycatcher All Reports: 11 Aug Hughes KM; 21 Aug Hughes DB; 26 Aug Hughes RDO; 31 Aug Hughes KM; 03 Sep Kingsbury BFH

Western Wood-Pewee Late: 04 Sep Pennington TJ; 18 Aug Meade APB; 04 Aug Harding CEM

Eastern Wood-Pewee Late: 14 Sep Day MO; 28 Aug Hughes RDO, KM; 26 Aug Lake JSP

Yellow-bellied Flycatcher All Reports: 25 Aug Day MO; 26 Aug Union DS; 28 Aug Hughes KM; 31 Aug Hughes KM; 31 Aug Stanley RDO; 03 Sep Hughes RDO

Alder Flycatcher Only Report: **03 Aug Clay (1 singing) DS**

Willow Flycatcher All Reports: 22 Aug Stanley RDO; 14 Aug Stanley RDO; 14 Aug Pennington TJ; 11 Aug Pennington TJ; 07 Aug Hughes DB; 06 Aug Pennington JLB

Least Flycatcher Late: 20 Sep Day MO; 13 Sep Hughes EDS; 22 Aug Stanley RDO

Eastern Phoebe Late: 08 Oct Minnehaha MRZ, MS; 02 Oct Hughes KM; 03 Sep Lyman RDO

Say's Phoebe Late: 16 Sep Sully KM; 16 Sep Jones RDO; 02 Sep Harding DB

Great Crested Flycatcher Late: 09 Sep Kingsbury JSP; 03 Sep Minnehaha MS; 03 Sep Hughes KM; 12 Aug Pennington JLB

Western Kingbird Late: 10 Sep Sully KM; 31 Aug Charles Mix RM; 30 Aug Pennington JLB; 30 Aug Harding CEM; 26 Aug Kingsbury JSP

Eastern Kingbird Late: 16 Sep Miner JSP; 16 Sep Charles Mix RM; 02 Sep Kingsbury JSP; 02 Sep Harding DB

Loggerhead Shrike Late: 03 Sep Stanley RDO; 02 Sep Harding DB; 30 Aug Pennington JLB; 25 Aug Day MO

Northern Shrike Early: **10 Oct Stanley RDO**; 14 Oct Sully KM; 15 Oct Harding CEM; 10 Nov Day MO

Bell's Vireo Late: 31 Aug Stanley RDO; 28 Aug Hughes KM; 27 Aug Sully RDO; 06 Aug Pennington JLB

Plumbeous Vireo Only Report: 12 Aug Pennington RDO

Blue-headed Vireo Early: **21 Aug Edmunds JDW**; **21 Aug Hughes DB**; 26 Aug Stanley RDO ... Late: 20 Sep Day MO; 14 Sep Deuel BJU; 03 Sep Minnehaha MS; 02 Sep Hughes KM

Warbling Vireo Late: 19 Sep Brown MO; 09 Sep Kingsbury JSP; 08 Sep Stanley DB; 08 Sep Hughes EDS; 20 Aug Pennington JLB

Philadelphia Vireo All Reports: 24 Aug Stanley RDO; 26 Aug Stanley RDO; 26 Aug Union DS; 27 Aug Sully RDO; 03 Sep Hughes KM; 09 Sep Kingsbury JSP

Red-eyed Vireo Late: 15 Sep Hughes KM; 09 Sep Kingsbury JSP; 08 Sep Stanley DB; 05 Sep Pennington TJ

Gray Jay All Reports: 14 Aug Custer JLB; 19 Aug Pennington JLB; 24 Aug Meade EEM

Pinyon Jay reported from Meade County

Clark's Nutcracker All Reports: 14 Aug Custer JLB; 19 Aug Pennington JLB; 21 Aug Pennington JLB; 31 Aug Custer JLB

Black-billed Magpie reported **16 Nov Day BJU**

Purple Martin All Reports: 26 Aug Lake JSP; 12 Aug McCook JSP

Tree Swallow Late: 23 Sep Kingsbury JSP; 21 Sep Grant BJU; 19 Aug Minnehaha MS; 03 Aug Pennington JLB

Violet-green Swallow Late: 19 Aug Pennington JLB; 18 Aug Pennington JLB; 12 Aug Pennington RDO; 03 Aug Harding KM

Northern Rough-winged Swallow All Reports: 27 Aug Minnehaha MS; 23 Aug Grant BJU; 17 Aug Charles Mix RM; 07 Aug Grant BJU; 01 Aug Deuel BJU; 01 Aug Charles Mix RM

Bank Swallow All Reports: 09 Sep Kingsbury JSP; 25 Aug Roberts MO; 23 Aug Grant BJU; 12 Aug Pennington RDO; 07 Aug Grant BJU; 01 Aug Deuel BJU

Cliff Swallow Late: 09 Sep Kingsbury JSP; 23 Aug Grant BJU; 19 Aug Pennington JLB; 06 Aug Stanley DB

Barn Swallow Late: 30 Sep Minnehaha MRZ; 30 Sep Kingsbury JSP; 21 Sep Grant BJU; 10 Sep Sully KM; 19 Aug Meade AKB

Red-breasted Nuthatch Early: 02 Sep Lake JSP; 03 Sep Kingsbury BFH; 04 Sep Brookings BFH; 09 Sep Sully KM

Brown Creeper Early: 29 Sep Hughes EDS; 08 Oct Minnehaha MRZ; 10 Nov Day MO

Rock Wren Late: 09 Oct Pennington MMM; 30 Sep Jackson KM; 02 Sep Harding DB; 14 Aug Stanley RDO

Canyon Wren All Reports: 06 Aug Meade AKB; 12 Nov Meade AKB

House Wren Late: 04 Oct Stanley KM; 01 Oct Hughes KM; 23 Sep Kingsbury JSP; 21 Sep Custer MMM

Winter Wren Early: **26 Aug Stanley RDO**; 03 Oct Hughes DB; 07 Oct Minnehaha MRZ ... Late: 26 Oct Hughes KM; 15 Oct Lincoln MRZ; 04 Oct Stanley KM

Sedge Wren Late: 01 Oct Hughes KM, DB; 16 Sep Sully KM; 19 Aug Moody JSP; 19 Aug Minnehaha MS

Marsh Wren Late: 15 Oct Stanley DB; 14 Oct Kingsbury JSP; 30 Sep Clay DS

Golden-crowned Kinglet Early: 30 Sep Kingsbury JSP; 04 Oct Hughes EDS; 07 Oct Minnehaha JSP

Ruby-crowned Kinglet Early: **23 Aug Stanley KM**; 02 Sep Kingsbury JSP; 16 Sep Lake JSP; 16 Sep Charles Mix RM ... Late: 15 Oct Lincoln MRZ; 14 Oct Kingsbury JSP; 13 Oct Hughes KM; 10 Oct Pennington MMM

Blue-gray Gnatcatcher Only Report: 02 Sep Lake JSP
Eastern Bluebird Late: 22 Nov Charles Mix RM; 03 Nov Sully KM; 14 Oct Kingsbury JSP; 09 Oct Meade APB
Mountain Bluebird Late: **16 Nov Day BJU**; 29 Sep Jackson KM; 25 Sep Meade EEM
Townsend's Solitaire Early: 14 Oct Stanley DB; 03 Nov Sully KM; 30 Nov Brookings LH
Veery All Reports: 12 Sep Hughes KM; 02 Sep Hughes KM
Gray-cheeked Thrush Only Report: **29 Aug Stanley RDO**
Swainson's Thrush Early: 28 Aug Hughes KM; 02 Sep Kingsbury JSP; 08 Sep Stanley DB ... Late: 05 Oct Meade APB; 26 Sep Stanley DB; 26 Sep Hughes EDS; 16 Sep Lake JSP
Hermit Thrush All Reports: 07 Oct Minnehaha JSP; 09 Oct Minnehaha MRZ
Gray Catbird Late: 01 Oct Stanley RDO, KM; 27 Sep Hughes EDS; 17 Sep Lake JSP; 16 Sep Harding CEM
Northern Mockingbird Only Report: 14 Aug Stanley RDO
Brown Thrasher Late: 11 Oct Hughes KM; 17 Sep Lake JSP; 16 Sep Harding CEM
American Pipit Early: 02 Oct Sully RDO; 09 Oct Meade JLB; 09 Oct Stanley KM; 12 Oct Grant BJU ... Late: 04 Nov Kingsbury JSP; 03 Nov Day MO; 26 Oct Grant BJU; 14 Oct Sully KM
Sprague's Pipit Late: **22 Oct Jones DB**; 30 Sep Haakon RDO; 25 Sep Meade EEM
Bohemian Waxwing All Reports: 29 Oct Sully KM; 07 Nov Stanley RDO; 16 Nov Day BJU; 22 Nov Harding KM
Golden-winged Warbler All Reports: **25 Aug Day MO**; **26 Aug Union DS**
Tennessee Warbler All Reports: 25 Aug Day MO; 01 Sep Stanley RDO; 03 Sep Kingsbury BFH; 12 Sep Hughes KM; 20 Sep Day MO
Orange-crowned Warbler Early: 26 Aug Stanley RDO; 27 Aug Meade AKB; 01 Sep Hughes KM; 03 Sep Kingsbury BFH; 03 Sep Minnehaha MS ... Late: 14 Oct Kingsbury JSP; 13 Oct Hughes KM; 10 Oct Pennington MMM
Nashville Warbler Early: 22 Aug Stanley KM; 25 Aug Day MO; 26 Aug Lake JSP ... Late: 07 Oct Minnehaha JSP; 03 Oct Stanley RDO; 20 Sep Day MO
Northern Parula Only Report: 11 Sep Hughes KM
Yellow Warbler Late: 01 Oct Stanley RDO; 20 Sep Hughes EDS; 20 Sep Day MO; 10 Sep Meade JLB
Chestnut-sided Warbler All Reports: **22 Aug Hughes RDO**; 25 Aug Day MO; 01 Sep Hughes KM; 11 Sep Hughes KM; 16 Sep Lake JSP
Magnolia Warbler Early: **22 Aug Stanley RDO**; 25 Aug Day MO; 26 Aug Lake JSP ... Late: 24 Sep Union BFH; 14 Sep Hughes EDS; 09 Sep Kingsbury JSP
Black-throated Blue Warbler All Reports: **22 Aug Stanley RDO**; **01 Sep Hughes KM**
Yellow-rumped Warbler Early: 27 Aug Sully RDO; 28 Aug Hughes DB; 02 Sep Kingsbury JSP ... Late: 09 Nov Hughes KM; 22 Oct Minnehaha MRZ; 22 Oct Jones DB
Black-throated Green Warbler All Reports: 24 Aug Stanley RDO; 27 Aug Hughes KM; 09 Sep Kingsbury JSP; 11 Sep Hughes KM
Townsend's Warbler Only Report: 26 Aug Pennington TJ
Blackburnian Warbler Early: 18 Aug Hughes DB; 22 Aug Stanley RDO; 25 Aug Day MO ... Late: 03 Sep Minnehaha MS; 01 Sep Hughes KM; 26 Aug Union DS
Pine Warbler Only Report: 14 Sep Deuel BJU
Palm Warbler Only Report: 20 Sep Day MO
Bay-breasted Warbler All Reports: 01 Sep Stanley RDO; 09 Sep Kingsbury JSP; 11 Sep Hughes KM; 16 Sep Stanley RDO; 20 Sep Hughes EDS
Blackpoll Warbler All Reports: 23 Aug Stanley RDO; 02 Sep Hughes KM; 09 Sep Sully KM; 20 Sep Day MO
Black-and-white Warbler Early: 07 Aug Hughes DB; 14 Aug Pennington TJ; 22 Aug Stanley RDO; 25 Aug Day MO ... Late: 15 Sep Hughes KM; 09 Sep Kingsbury JSP; 02 Sep Lake JSP; 30 Aug Pennington JLB

American Redstart Late: 20 Sep Day MO; 16 Sep Lake JSP; 15 Sep Hughes KM; 05 Sep Pennington TJ

Ovenbird Late: 23 Sep Kingsbury JSP; 20 Sep Day MO; 16 Sep Lake JSP; 15 Sep Hughes EDS; 11 Sep Harding CEM

Northern Waterthrush Early: 22 Aug Hughes RDO; 27 Aug Pennington TJ; 02 Sep Kingsbury JSP ... Late: 12 Sep Hughes EDS; 03 Sep Pennington TJ

Mourning Warbler Early: 19 Aug Hughes DB; 20 Aug Clay DS; 22 Aug Stanley RDO; 25 Aug Day MO ... Late: 08 Sep Stanley DB; 08 Sep Hughes EDS

MacGillivray's Warbler All Reports: 20 Aug Pennington TJ; 11 Sep Hughes EDS

Common Yellowthroat Late: 14 Oct Kingsbury JSP; 01 Oct Stanley RDO, KM; 27 Sep Hughes EDS; 10 Sep Meade JLB

Wilson's Warbler Early: **09 Aug Pennington TJ**; 17 Aug Stanley RDO; 19 Aug Hughes DB; 25 Aug Day MO ... Late: 01 Oct Stanley RDO, KM; 29 Sep Hughes EDS; 20 Sep Day MO; 11 Sep Custer MMM

Canada Warbler Early: **13 Aug Edmunds JDW**; 22 Aug Stanley RDO; 25 Aug Day MO ... Late: 02 Sep Lake JSP; 28 Aug Hughes KM, DB; 26 Aug Stanley RDO

Yellow-breasted Chat Late: **09 Oct Hughes KM**; 28 Sep Stanley RDO; 16 Sep Sully KM; 13 Sep Harding CEM; 27 Aug Spink RDO

Western Tanager Late: 29 Aug Meade APB; 28 Aug Pennington JLB; 03 Aug Harding KM, CEM

Spotted Towhee Late: 18 Nov Hughes KM; 24 Oct Stanley RDO; 09 Oct Minnehaha MRZ; 08 Oct Meade AKB

Eastern Towhee Only Report: 06 Aug Minnehaha MS

American Tree Sparrow Early: **10 Sep Charles Mix RM**; 13 Oct Stanley KM; 14 Oct Kingsbury JSP; 15 Oct Meade JLB

Chipping Sparrow Late: 27 Oct Sully KM; 13 Oct Stanley KM; 07 Oct Minnehaha JSP; 18 Sep Meade EEM

Clay-colored Sparrow Late: 03 Oct Stanley RDO; 01 Oct Hughes KM; 25 Sep Jones DB; 09 Sep Kingsbury JSP

Field Sparrow Late: 09 Oct Minnehaha MRZ; 03 Oct Hughes DB; 01 Oct Stanley RDO; 25 Sep Jones DB

Vesper Sparrow Late: 26 Oct Grant BJU; 26 Oct Deuel BJU; 15 Oct Meade JLB; 10 Oct Stanley RDO

Lark Sparrow Late: 01 Oct Stanley DB; 09 Sep Jones DB; 02 Sep Harding DB

Lark Bunting Late: 16 Sep Stanley RDO; 14 Sep Custer MMM; 10 Sep Meade JLB

Savannah Sparrow Late: 26 Oct Grant BJU; 26 Oct Deuel BJU; 14 Oct Sully KM; 09 Sep Jones DB

Grasshopper Sparrow Late: 23 Sep Kingsbury JSP; 19 Aug Moody JSP; 14 Aug Tripp DB; 06 Aug Stanley DB

Le Conte's Sparrow All Reports: 19 Sep Hughes KM, RDO; 25 Sep Hughes KM; 30 Sep Clay DS; 09 Oct Hughes KM; 09 Oct Lake TS

Nelson's Sharp-tailed Sparrow All Reports: **03 Oct Stanley RDO**; 25 Sep Hughes KM; 19 Sep Hughes RDO, KM

Fox Sparrow Early: **13 Sep Harding CEM**; 26 Sep Stanley DB; 09 Oct Hughes KM; 14 Oct Kingsbury JSP ... Late: 13 Nov Clay DS; 15 Oct Lincoln MRZ; 04 Oct Stanley KM

Song Sparrow Late: 19 Nov Faulk MMM; 16 Nov Day BJU; 09 Nov Pennington JLB; 05 Nov Charles Mix RM

Lincoln's Sparrow Early: 27 Aug Hughes KM; 03 Sep Kingsbury BFH; 16 Sep Lake JSP; 02 Oct Custer MMM ... Late: 09 Oct Hughes KM; 07 Oct Minnehaha JSP; 03 Oct Stanley RDO

Swamp Sparrow Late: **18 Nov Yankton DS**; 28 Oct Hughes KM; 15 Oct Stanley DB; 14 Oct Kingsbury JSP

White-throated Sparrow Early: **01 Sep Hughes KM; 01 Sep Stanley RDO; 02 Sep Harding DB**; 16 Sep Lake JSP ... Late: 28 Oct Minnehaha MS; 28 Oct Kingsbury JSP; 27 Oct Hughes KM

Harris's Sparrow Early: 14 Sep Day MO; 20 Sep Charles Mix RM; 23 Sep Kingsbury JSP; 23 Sep Stanley RDO; 28 Sep Harding CEM ... Late: 26 Nov Charles Mix RM; 05 Nov Pennington JLB; 04 Nov Clay AKB; 28 Oct Kingsbury JSP

White-crowned Sparrow Early: 13 Sep Harding CEM; 23 Sep Stanley RDO; 26 Sep Hughes KM; 30 Sep Kingsbury JSP ... Late: 28 Oct Kingsbury JSP; 28 Oct Hughes KM; 22 Oct Stanley DB; 19 Oct Custer MMM

Dark-eyed Junco Early: 09 Sep Sully KM; 14 Sep Day MO; 16 Sep Kingsbury JSP

Lapland Longspur Early: 26 Oct Deuel BJU; 26 Oct Grant BJU; 27 Oct Sully RDO

Chestnut-collared Longspur Late: 30 Aug Pennington JLB; 19 Aug Jones DB; 15 Aug Sully RDO

Snow Bunting Early: 26 Oct Deuel BJU; 30 Oct Harding CEM; 03 Nov Day MO; 04 Nov Sully KM

Northern Cardinal reported 14 Aug Tripp DB

Rose-breasted Grosbeak All Reports: 05 Sep Hughes EDS; 02 Sep Kingsbury JSP; 25 Aug Day MO; 02 Aug Charles Mix RM

Black-headed Grosbeak Late: 07 Sep Meade EEM; 02 Sep Hughes KM; 26 Aug Stanley RDO

Blue Grosbeak All Reports: 27 Aug Union BFH; 14 Aug Stanley RDO; 06 Aug Sully KM

Lazuli Bunting All Reports: 19 Aug Pennington JLB; 11 Aug Meade APB; 06 Aug Pennington JLB

Dickcissel Late: 26 Aug Kingsbury JSP; 19 Aug Minnehaha MS; 18 Aug Marshall MO; 12 Aug Pennington JLB

Bobolink Late: 02 Sep Kingsbury JSP; 25 Aug Day MO; 19 Aug Pennington JLB; 19 Aug Moody JSP; 13 Aug Hughes KM

Western Meadowlark Late: 25 Nov Lyman DB; 04 Nov Charles Mix RM; 30 Oct Roberts BJU; 29 Oct Harding CEM

Yellow-headed Blackbird Late: 28 Oct Minnehaha MRZ; 28 Oct Kingsbury JSP; 01 Oct Stanley RDO; 10 Sep Meade JLB

Rusty Blackbird Early: 01 Oct Stanley RDO; 14 Oct Sully KM; 26 Oct Grant BJU ... Late: 16 Nov Roberts BJU; 16 Nov Grant BJU; 16 Nov Day BJU; 22 Oct Stanley DB

Brewer's Blackbird Late: 04 Nov Kingsbury JSP; 14 Oct Sully KM; 01 Oct Stanley RDO; 06 Sep Meade JLB

Common Grackle Late: 16 Nov Roberts BJU; 16 Nov Grant BJU; 16 Nov Day BJU; 12 Oct Charles Mix RM; 21 Aug Meade EEM

Great-tailed Grackle All Reports: 14 Oct Kingsbury JSP; 16 Sep Kingsbury JSP

Brown-headed Cowbird Late: 30 Oct Roberts BJU; 28 Oct Kingsbury JSP; 07 Oct Minnehaha JSP; 01 Oct Stanley RDO; 19 Aug Meade AKB

Orchard Oriole Late: 29 Aug Hughes KM; 25 Aug Day MO; 20 Aug Stanley RDO; 06 Aug Pennington JLB

Baltimore Oriole Late: 16 Sep Charles Mix RM; 15 Sep Hughes KM; 02 Sep Lake JSP; 27 Aug Harding CEM

Pine Grosbeak All Reports: 28 Oct Stanley KM; 10 Nov Day MO; 16 Nov Day BJU

Purple Finch Early: 24 Oct Lake JSP; 24 Oct Stanley RDO; 10 Nov Day MO

Red Crossbill reported 03 Nov Roberts MO

Common Redpoll All Reports: 13 Oct Hughes KM; 15 Oct Kingsbury TS; 10 Nov Day MO; 16 Nov Day BJU; 17 Nov Sully KM

Pine Siskin Early: 30 Sep Kingsbury JSP; 12 Oct Stanley RDO; 04 Nov Day WS

Reports Requiring Acceptance By The Rare Bird Records Committee

Black Scoter 22 Oct Stanley DB, KM, RDO; 29 Oct Stanley RDO; 04 Nov Stanley KM, RDO; 10 Nov Day MO

Horned Grebe 28 Aug Stanley RDO

Piping Plover 22 Sep Sully RDO

Buff-breasted Sandpiper 09 Oct Sully RDO; 30 Sep Kingsbury JSP
Wilson's Phalarope 26 Oct Stanley RDO
Little Gull 10 Sep Buffalo RDO; 15 Sep Buffalo RDO; 15 Sep Lyman KM
Iceland Gull 26 Nov Hughes RDO
Rufous Hummingbird 30-31 Aug Hughes KM
Red-naped Sapsucker 28 Sep Stanley RDO
Scissor-tailed Flycatcher 10 Sep Sully RDO
Philadelphia Vireo 05 Sep Pennington TJ
Canyon Wren 02 Sep Harding (2) DB
Gray-cheeked Thrush 20 Aug Pennington TJ
American Pipit 29 Aug Minnehaha MS
Connecticut Warbler 20 Aug Pennington TJ
Smith's Longspur 30 Sep Haakon RDO

Species Expected But Not Reported

Least Bittern, Little Blue Heron (2), American Black Duck (2), Ruffed Grouse, Long-billed Curlew (2), Hudsonian Godwit (3), White-rumped Sandpiper, Black-legged Kittiwake (4), Black-billed Cuckoo (2), Yellow-billed Cuckoo, American Three-toed Woodpecker, Dusky Flycatcher, Cordilleran Flycatcher, Yellow-throated Vireo, Pygmy Nuthatch, Carolina Wren, American Dipper, Wood Thrush (3), Varied Thrush, Virginia's Warbler, Cape May Warbler (4), Scarlet Tanager (2), Brewer's Sparrow, Indigo Bunting, Bullock's Oriole, Gray-crowned Rosy Finch (2), Cassin's Finch (2), White-winged Crossbill (2), Evening Grosbeak

Contributing Observers

DB	Doug Backlund	GO	Gary Olson
JLB	Jocelyn L. Baker	RDO	Ricky D. Olson
KB	Kristel Bakker	MO	Mark Otnes
APB	Addison & Patricia Ball	JSP	Jeffrey S. Palmer
AKB	Anna K. Ball	MS	Mark Schmidtbauer
LH	Lois Haertel	TS	Terry Sohl
BFH	Bill F. Huser	WS	Waubay NWR Staff
TJ	Todd Jensen	EDS	Eileen Dowd Stukel
RM	Ron Mabie	DS	David Swanson
MMM	Michael M. Melius	BJU	Bill J. Unzen
CEM	Charles E. Miller	JDW	J. David Williams
EEM	Ernest E. Miller	MRZ	Mick R. Zerr
KM	Kenny Miller		



The Common Loon is uncommonly beautiful. Towards spring it is good to see the change from drab winter plumage to the elegant breeding plumage seen here. Bald Lake, Alaska. 6/20/06
 Photo: Terry Sohl



Contents

President's Page.....	3
by Rosemary Draeger	
From Our Past...in SD Bird Notes	4
by L. M. Baylor	
Editorial	5
by Douglas E. Chapman	
The Lennox South Dakota Breeding Bird Survey	6
by Dr. Gilbert Blankespoor	
Dedication of the June Harter Wetland	11
Near Highmore, SD	
by L.M. Baylor	
2006 Fall Seasonal Reports.....	14
by Jeffrey S. Palmer	
Harris's Sparrow, Stanley County, SD.....	Back Cover
Photo: Doug Backlund	