



South Dakota

Bird  Notes

South Dakota Ornithologists' Union

Photo Credit: Mick Zer

Lesser Black-backed and Ring-billed Gulls, Stanley Co., 10/5/2019

SOUTH DAKOTA BIRD NOTES, the official publication of the South Dakota Ornithologists' Union, is sent to all members whose dues are paid for the current year. Life membership: \$400; Family Life membership (one subscription to SD Bird Notes): \$500; Sustaining membership: \$40; Regular membership: \$20; Family membership (one household; one subscription to SD Bird Notes): \$25; Junior/Student membership: \$10; Library Subscription: \$30. Single and back copies: Members, \$5; non-members, \$6. All dues, contributions, and orders for back copies should be sent to the SDOU Treasurer, Rosemary Draeger, 2520 E. Whisper Trail, Sioux Falls, SD, 57108.

SDOU website: <www.sdou.org>

©2019 South Dakota Ornithologists' Union. All Rights Reserved.

Editor.....Nancy Drilling, Rapid City
Seasonal Reports Editor.....Jeffrey S. Palmer, Madison
Associate Editors/Proofreaders:.....Bill Draeger, Sioux Falls
Linda Johnson, Sioux Falls

VOL. 71

FALL 2019

No.3

SOUTH DAKOTA ORNITHOLOGISTS' UNION

Officers 2019

President Scott Stolz, Sturgis
Vice President Kelly Preheim, Armour
SecretaryDavid Swanson, Vermillion
TreasurerRosemary Draeger, Sioux Falls
Editor Nancy Drilling, Rapid City
LibrarianMick Zerr, Sioux Falls

Elected Directors

For Term expiring 2019: Bob Bork, Sioux Falls; Richard Latuchie, Rapid City; Kelly Preheim, Armour; Kent Jensen, Brookings; and Scott Stolz, Sturgis
For Term expiring 2020: Cheryl Vellenga, Sisseton; Gary Olson, Aberdeen; Ron Mabie, Pickstown; Duane Weber, Custer; and Mick Zerr, Sioux Falls
For Term expiring 2021: Chris Anderson, Sioux Falls; Bill Bossman, Pierre; Linda Johnson, Sioux Falls; Kenny Miller, Pierre and Barry Parkin, Aberdeen

Past President Directors

Jocelyn L. Baker, Addison Ball, L.M. Baylor, Gilbert Blankespoor, Roger Dietrich, Rosemary Draeger, Nancy Drilling, Bruce Harris, Nelda Holden, Todd M. Jensen, Ricky D. Olson, Jeffrey S. Palmer, Rex Riis, Robb Schenck, Dennis Skadsen, David Swanson, Dan A. Tallman, J. David Williams

Standing Committees of SDOU:

Membership Committee: Bob Bork, Linda Johnson (chair), Mark Schmidtbauer

Nathaniel R. Whitney, Jr. Memorial Research Grants: Gene K. Hess (chair), Linda Johnson, Duane Weber

Rare Bird Records: Nancy Drilling, Todd M. Jensen, Ricky D. Olson, Jeffrey S. Palmer, Scott Stolz, David Swanson (chair), J. David Williams

Scholarships and Awards: Nelda Holden, Ricky D. Olson (chair), Galen Steffen



President's Page

Scott Stolz

First off, I would like to extend a thank you to all the people that made the 2019 fall meeting in Pierre a huge success. Everyone involved with setting up the meeting did a wonderful job and all the speakers provided informative talks. As usual, the birds were the star of the show. The sheer volume of gulls was incredible with a few rarities thrown in for good measure. I am always amazed by the variety of birds that are found when large numbers of people are out searching for them. Makes you wonder how many "rarities" would be found if more people were out looking for them all the time. Hint hint!!!



Every year at the meetings we talk about our membership numbers and that we need to recruit new members into our organization. I would encourage everyone in the group to think of ideas on how we can promote our group and expand our membership. There are lots of birders that participate in more localized events such as the local bird clubs, Christmas bird counts and the great backyard bird count. There has got to be some way to bring those folks into our group. A simple idea may be to give an SDOU membership as a Christmas or birthday present instead of some little trinket.

ANNOUNCEMENTS

Membership Dues Reminder

It is time to renew your SDOU membership or join SDOU if you haven't already. Dues have remained the same for 2019: Sustaining membership \$40, Regular membership \$20, Family membership \$25, and Junior/Student membership \$10. There are also Life memberships; see the inside cover of your mailing label for details. You can renew online using PayPal under the "SDOU" tab at the top of the home page at www.sdou.org. Or you can send a check (payable to South Dakota Ornithologists' Union) to the SDOU Treasurer, Rosemary Draeger, 2520 E. Whisper Trail, Sioux Falls, SD, 57108. And, if you have already paid, thank you!

Mark Your Calendar – Spring SDOU meeting

The 71st annual spring meeting of the South Dakota Ornithologists' Union will be held April 24-26, 2020 in Belle Fourche, SD. Our field trips will focus on migrating waterfowl, displaying grouse (Sage-grouse, Sharp-tailed Grouse, and Ruffed Grouse), and Black Hills specialties.

Registration information is posted on the SDOU website (SDOU.org/SDOU/meetings) and the inside cover of this issue of South Dakota Bird Notes. Lodging options are as follows:

AmericInn Belle Fourche (2312 Dakota Avenue, (605) 892-0900). Room rates: \$79.90+tax per night double occupancy for SDOU meeting (state rate also offered). The discount rate on the reserved block of ten rooms will be held until April 1. Make sure to mention that you are with SDOU when making a reservation.

Other lodging options in Belle Fourche include Kings Inn, Super8, Econo Lodge, and Sunset Motel. Spearfish is just 10 miles away and has many more options.

Camping options:

- Rocky Point Rec Area (reservations required, online or call 1-800-710-2267)
- Riverside Campground (605-641-8005)
- Wyatt's Hideaway (www.wyattshideaway.com, 605-892-0600)
- Other options in Spearfish, Whitewood, and Black Hills National Forest

SCHEDULE (All times are Mountain Daylight Times)

Friday, 24 April (Tri-State Museum)

7:00—8:00 PM: Registration and Social Hour

8:00—9:00 PM: Guest Speaker (TBD)

Saturday, 25 April (meet at Tri-State Museum parking lot)

7:00 AM - 4:00 PM: Field Trips (NOTE: Sage-grouse lek field trip will leave ~5:30 AM)

4:30 – 5:30 PM: Board of Directors Meeting (location TBD)

6:30 – 8:30 PM: Banquet/Evening Program (TBD)

Sunday, 26 April (meet at Tri-State Museum parking lot)

7:00 AM – 12:00: Field Trips (NOTE: Sage-grouse lek field trip will leave ~5:30 AM)

12:00 – Bird Count Off (location TBD)

12:30 PM: Rare Bird Records Committee meeting (location TBD)

The 2020 fall SDOU meeting will be held in Hot Springs, SD. Details to follow.

Summary of the 2019 SDOU Fall Meeting

Nancy Drilling

The fall 2019 SDOU meeting was held October 4 – 6 at the Governor's Inn in Pierre. The meeting began on Friday night with a Social Hour and a presentation by Eileen Dowd Stukel on 25 years of bird-banding in the Pierre area. Local birding experts Ricky Olson, Kenny Miller and Dan Svingen led field trips to birding areas on both Saturday and Sunday mornings. Because of high water releases at Oahe Dam, gulls were the highlight. Among the many hundreds of mostly Franklin's Gulls were Herring, Bonaparte's, California, Lesser Black-backed, and Sabine's gulls. The group birding in the Fort Pierre National Grassland found Sprague's Pipits and Smith's Longspurs, among other grassland birds. And birders searching the Hughes County part of the region found plenty of migrating sparrows. In all, around 100 species were tallied.

As happens at every Fall SDOU meeting, most of Saturday was devoted to paper presentations on various research projects concerning South Dakota birds. Graduate students from University of South Dakota presented their research results on bird use and nest success in early successional forests of the Missouri River, modelling Virginia's Warbler breeding distribution in South Dakota, and grassland bird stopover migration biology in southeastern South Dakota. The final student paper, presented by Jackie Krakow of SDSU, described grassland bird use in various types of prairie plantings. Several presentations were given by non-students. Dave Swanson of USD gave two presentations. One discussed preliminary results of the first year of the Blue Grosbeak citizen science effort while the second presentation showed modeled implications of climate change on grassland bird diversity in the Northern Great Plains. Nancy Drilling of Bird Conservancy of the Rockies presented the results of her efforts to band Northern Saw-whet Owls in western South Dakota. Ricky Olson of Pierre told about the results of the American Dipper nestbox project, which was partially supported by SDOU funds. See the meeting abstracts later in this issue for details on all of the presentations.

At the SDOU General Membership meeting on Saturday afternoon, five members were elected to three-year terms on the SDOU Board of Directors. They are Mark Schmidtbauer of Rowena, Bob Bjork of Sioux Falls, Dick Latuchie of Rapid City, Kelly Preheim of Armour, and Scott Stolz of Sturgis. Officers elected at the SDOU Board of Directors meeting are Scott Stolz as President, Kelly Preheim as Vice President, Dave Swanson of Vermillion as Secretary, Rosemary Draeger of Sioux Falls as Treasurer, Nancy Drilling of Rapid City as Bird Notes Editor, and Mick Zerr of Sioux Falls as Librarian. The day ended with a banquet and the evening's program - a presentation by Dan Svingen on how to increase birding enjoyment by learning about bird behavior.

In all, 35 members and guests registered to attend the various events. A big thanks to Ricky Olson, Kenny Miller, and Dave Swanson for organizing the meeting and handling logistics. The spring SDOU meeting will be April 24-26 at Belle Fourche while the 2020 fall meeting will be in Hot Springs. Details will be published in upcoming issues of *South Dakota Bird Notes*, advertised on the SDOU web page and Facebook page, and announced on the SD-birds list serve.



Dan Svingen of the USFS Fort Pierre Ranger District gave the Saturday evening program



Participants endured biting cold winds to catch a glimpse of a rare gull at the Oahe Dam spillway.

Summary of Research Presentations at the Fall 2019 SDOU meeting

The following are the titles and abstracts of presentations given at the Fall 2019 SDOU meeting in Pierre. The presenter is indicated by an asterisk.

BIRD USE OF EARLY SUCCESSIONAL SANDBAR VEGETATION FOR NESTING: WHAT DO WE LOSE BY MANAGING SANDBARS FOR PLOVERS AND TERNS? – Stephanie Nefas*, Mark Dixon, and David Swanson, Department of Biology, University of South Dakota, Vermillion

In the Missouri National Recreational River (MNRR), riverine sandbars created by periodic floods are initially used by two federally listed bird species the Interior Least Tern (*Stern antillarum athalassos*) and the Piping Plover (*Charadrius melodus*). These sandbars also provide opportunities for recruitment and establishment of early successional cottonwood-willow forest, which supplies habitat for a wide variety of birds, as they become vegetated and unsuitable for nesting terns and plovers. While nesting habitat for listed species can be maintained by vegetation removal, the biodiversity associated with an establishing, early successional, riparian forest is relinquished. An understanding of the current status trajectories of sandbar habitats and their biodiversity, as well as the biological tradeoffs of vegetation removal is necessary for a balanced ecosystem-based approach to sandbar management. We are assessing conditions and dynamics of riparian vegetation and land bird diversity during both breeding and migration seasons. My objective is to determine the degree that set-aside, revegetating, sandbars support diverse native plants, land birds, and cottonwood forest establishment. Preliminary point count surveys during spring and fall migratory periods reveal a diverse assemblage of birds, including many long-distance migrant species, occurring in the early successional sandbar habitat. Some differences in species assemblages occurred between spring and fall migration periods and between years within migratory seasons. This habitat also supports a diverse assemblage of breeding birds. Overall apparent nest survival differed between 2018 (30% survival) and 2019 (47% survival), suggesting that nesting success may have benefited from high water levels in 2019 increasing separation of sandbar habitat from mainland habitats, potentially reducing access of predators to the sandbars. Overall nesting success for birds in early successional habitats appears similar to that in other woodland habitat types in the region.

IMPACTS OF INVASIVE TREES ON NEST SURVIVAL OF BIRDS IN MISSOURI RIVER RIPARIAN FORESTS – Amanda Hegg*, Mark Dixon and David Swanson, Department of Biology, University of South Dakota, Vermillion

Nest predation has a major influence on the productivity of bird communities, and nest-, patch- and landscape-level characteristics may play important roles in mediating nest survival. Introduction of invasive plants, however, may alter habitat features, predation, and nest survival. We examined whether invasive trees, Russian olive (*Elaeagnus angustifolia*) and eastern red cedar (*Juniperus virginiana*), in Missouri River riparian habitats influenced nest daily survival rate (DSR) by monitoring nests and conducting vegetation surveys around nests from 2016-2019. At the nest-scale, we tested the impacts of nesting in invasive versus native substrates and the influence of vegetation cover on nesting success. At the patch-scale, we tested the effects of vegetation density, composition, and invasive tree prevalence on nesting success. A total of 744 nests of 31 bird species was found from 2016-2019, and the most commonly chosen nest tree among bird species was Russian olive. A total of only 17 nests experienced brood parasitism. Preliminary results (assuming constant DSR) indicate that DSR in Russian olive was lower for all species during 2016-2017, but increased during 2018. Interestingly, there were opposite trends for nests placed in eastern red cedar. Comparisons of preliminary models suggest that the influence of nest tree on DSR is variable among bird species and years, and that vegetation cover surrounding nests best explained daily survival rate for all species combined. Further analyses assessing the impacts of temporal and patch-scale variation on DSR will help to reveal the complex interaction of different factors that may influence nest survival for riparian bird species in invaded habitats.

APPLYING AN ENSEMBLE OF SMALL MODELS TO PREDICT BREEDING DISTRIBUTION OF VIRGINIA'S WARBLER IN SOUTH DAKOTA – Reza Goljani Amirkhiz*¹, Mark D. Dixon¹, Jeffery S. Palmer², and David Swanson¹

¹University of South Dakota, Vermillion; ²Dakota State University, Madison

Defining the spatial distribution of populations is a primary step in conservation. However, the lack of sufficient occurrence records for rare populations is a major obstacle in precisely defining their distributions. The northeastern limit of the breeding range of Virginia's Warbler (*Oreothlypis virginiae*, VW) occurs in the southern Black Hills of South Dakota, where it is a species of conservation concern. Ensemble of Small Models (ESM) has been proposed as a technique to overcome the problem of few occurrence points in species distribution modeling. An ESM averages prediction of bivariate models across all possible combinations of predictor variables to form an ensemble weighted by cross-validated AUC scores. The goal of this study was to compare the performance of the ESM with a suite of commonly used species distribution modeling techniques since an ESM approach has not been tested for birds. We obtained 51 presence and 65 absence points from recent surveys in the southern Black Hills and considered 21 biologically relevant predictors to build our models. An ESM of artificial neural networks performed better than other modeling techniques. ESM allowed us to explore more dimensions of the Virginia's Warbler's ecological niche. The mean importance value for each variable considered across all individual bivariate models showed that terrain ruggedness index, tree canopy height, and shrub density were the most important variables associated with VW occurrence. Predictive maps derived from this modeling approach fit the current known range of VW in the Black Hills well but also identified some additional areas that appear to represent appropriate habitat. These results can guide future surveys and inform management actions for this species of conservation concern.

GRASSLAND BIRD USE OF HIGH AND LOW DIVERSITY NATIVE PRAIRIE PLANTINGS

– Jackie K. Krakow*¹, Kristel K. Bakker², Kyle W. Kelsey³, and Robert C. Lonsinger¹, and K.C. Jensen¹
¹South Dakota State University, Brookings; ²Dakota State University, Madison; ³Madison Wetland Management District, Madison

The United States Fish and Wildlife Service Wetland Management District has historically planted low diversity grasslands comprised of 5-8 species of warm- and cool-season native grasses. Within the last 10 years they transitioned to planting high diversity grasslands with a mix of 45-50 species of native forbs and grasses. We compared vegetation structure, grassland bird richness and individual species' densities between paired (n=31), low and high diversity native plantings on waterfowl production areas (WPAs) in the tallgrass prairie region of eastern South Dakota, 2017-19. We used analysis of covariance to determine if vegetation measurements, grassland bird species richness and individual species' density and occurrence differed between high and low diversity plantings. Since patch area is known to influence occurrence and density of grassland birds, we used the size of the planting as a covariate. Paired sites were located on the same WPA so landscape, which also influences grassland bird habitat use, was held constant. Effective leaf height, percent cover of forbs and percent cover of native plants were significantly greater in high diversity plantings while percent cover of grasses and introduced grasses were significantly greater in low diversity plantings. Grassland obligate bird species richness, Sedge Wren, Bobolink, Dickcissel, Clay-colored Sparrow, and Grasshopper Sparrow occurrence and Bobolink, Dickcissel, Clay-colored Sparrow and Grasshopper Sparrow density were all significantly greater in high diversity plantings. We recommend incorporating a high diversity of native grasses and forbs into grassland plantings to simultaneously provide habitat for multiple grassland bird species.

STOPOVER BIOLOGY OF GRASSLAND BIRDS AT RESTORED TALLGRASS PRAIRIES – Amy West* and David Swanson, Department of Biology, University of South Dakota, Vermillion

Migration is an energetically expensive but critical part of the annual cycle of migrant birds. Grassland birds are experiencing the greatest population declines of any bird guild, likely at least partly because of conversion of grassland habitats to agriculture. Consequently, grassland migrants may have limited options for migration stopover, but few studies have examined stopover biology for grassland birds. In addition, the simple occurrence of birds in grassland fragments during migration periods does not mean that the habitat is providing the food resources necessary for birds to replenish fat stores and continue migration. We captured birds by mist-net at Spirit Mound Historic Prairie, a 130-ha restored tallgrass prairie in southeastern South Dakota, and conducted transect surveys on seven different grassland sites during spring and fall migration periods. We conducted plasma metabolite profiling to determine triglyceride, an indicator of fat deposition, and beta-hydroxybutyrate, an indicator of fat depletion, levels. Preliminary results suggest that grassland, woodland/shrub, and habitat generalist bird species are all present on grasslands during the migration seasons. Moreover, birds appear to be successfully adding fat at this site, suggesting that restored tallgrass prairies can provide high-quality stopover habitat for grassland migrant birds. These findings have implications for creation and management of restored prairie habitats throughout grassland bird migratory pathways.

A PROJECT TO REPLACE NEST BOXES OF AMERICAN DIPPER (*CINCLUS MEXICANUS*) IN THE BLACK HILLS OF SOUTH DAKOTA – Ricky D. Olson, Pierre

The project goals were to replace existing nest boxes and install boxes in new locations. Many of the existing nest boxes were about twenty years old, in disrepair or missing because of vandals, floods etc. The locations of the nest box sites were mainly in the Spearfish Creek watershed. Some boxes were also installed in Rapid and Whitewood creeks. A total of sixty nest boxes was installed, 32 of the traditional wood boxes and 28 plastic tube nest boxes, modeled after a type used for dippers in Ireland. The boxes were installed by contractor George ‘The Canyon Man’ Prisbe. Some of the installed nest boxes were used by dippers this past summer, but a full accounting of the impact on dipper nesting success and population impacts awaits further study. The project was funded by the South Dakota Ornithologists’ Union, Missouri Breaks Audubon, and an anonymous donor.

MODELING THE IMPLICATIONS OF FUTURE BIOENERGY SCENARIOS ON BIRD DIVERSITY AND ABUNDANCE IN THE NORTHERN GREAT PLAINS – David Swanson*, Mark Dixon, and Andy Baltensperger, Department of Biology, University of South Dakota, Vermillion

North American grasslands are among the most endangered habitats on the continent. In addition, grassland birds are the guild showing greatest population declines among all bird groups. Future land use and climate scenarios are likely to impact the extent and location of grasslands on the landscape and may show trade-offs with grassland bird biodiversity. Predictions for how different future scenarios will affect the abundance and biodiversity patterns of birds in agricultural regions are necessary to pro-actively inform conservation planning. We used sets of georeferenced bird abundance records, 41 environmental predictors, and the RandomForests algorithm to create ecological niche models for two dozen obligate and facultative grassland bird species across the Upper Missouri River Basin. Models formed the basis for sets of species-specific distribution and relative abundance maps for the present day. We then modeled future bird distributions and populations to 2050 according to seven alternative scenarios for land use and climate change in the study region. The strongest overall predictors of current bird abundance for the grassland species assemblage were distance to forest (generally a negative relationship), mean winter temperature (positive and negative relationships, depending on the species), mean summer temperature (positive and negative relationships), and elevation (negative for waterfowl). Many grassland birds showed population stability or increases under future scenarios, although several species also were projected to show popu-

lation declines under at least some scenarios. These latter species typically showed negative associations with warmer winter temperatures and/or forest distance. Climate tended to be a stronger influence on bird populations than land use change in our models, consistent with other studies assessing the impact of future scenarios on bird distributions. Another pattern emerging from these models for most grassland bird species was that areas of current high density are areas of greatest predicted future population declines. These data should help inform future conservation management for grassland bird species.

THE TIMING OF BLUE GROSBEAK ARRIVAL IN SOUTH DAKOTA: EVIDENCE FOR DUAL BREEDING RANGES? – David Swanson* Department of Biology, University of South Dakota, Vermillion

Dual breeding in birds is defined as the same individual birds breeding in two separate locations within the same breeding season. This strategy is rare among birds. In North America, dual breeding has been documented for six species, with the pattern of the first brood occurring in the northern part of the breeding range and the second brood occurring in the southern part of the breeding range. The opposite pattern, with the first brood occurring in the southern part of the range and the second brood occurring in the northern part of the range, has been documented only for two Old World bird species. Blue Grosbeak (*Passerina caerulea*) observations in South Dakota (South Dakota Ornithologist' Union database; <https://research.dsu.edu/sdousbor/select-data.aspx>), in the northernmost portion of their range, show a peak in late June to mid-July. In the summer of 2019, four observers conducted systematic breeding-season point

count surveys along 10-mile transects in southeastern South Dakota to detect the timing of arrival of Blue Grosbeaks to determine if the patterns from the SDOU database are consistent. Preliminary data from these surveys were consistent with a pattern of late June-early July arrival in South Dakota, but more data are needed to properly address the relationship statistically (Fig. 1).

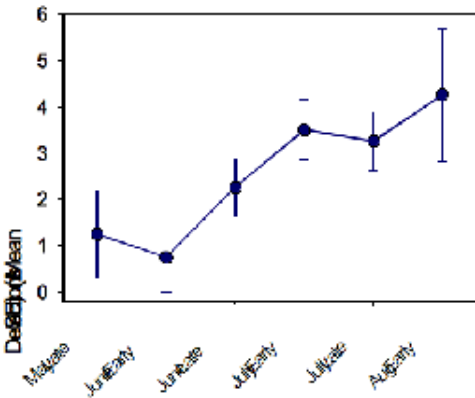


Fig. 1. Mean (\pm SE) number of detections of Blue Grosbeaks from four different 10-mile transects, with point counts every 1/2-mile, in southeastern South Dakota in the summer of 2019.

The temporal periods for nest initiation, incubation, and fledging in Blue Grosbeaks, along with temporal occurrence patterns of singing males in eastern South Dakota, are consistent with a hypothesis of dual breeding, with a first brood in the southern part of the breeding range and a second brood in the northern part of the breeding range. If confirmed, this would represent the first documentation of such a pattern for the New World. Further studies to document the extent and consistency of temporal occurrence patterns for singing male Blue Grosbeaks and temporal patterns of nest initiation in the northern portion of the breeding range, along with tracking studies to document temporal patterns of occurrence for individual birds throughout the entire breeding range, are needed to confirm dual breeding in this species. Plans for a citizen-science point count survey project to accumulate more data on Blue Grosbeak arrival times throughout South Dakota were outlined.

MIGRATORY SMALL OWL BANDING IN THE WESTERN DAKOTAS - Nancy Drilling, Bird Conservancy of the Rockies, Rapid City

Within the western Dakotas, forests occur as tiny corridors and patches in the middle of a sea of grass. These forested patches are stopover sites for a variety of migrating forest bird species, yet the role of these forested islands and corridors for migrating forest owls is not known. Since 2011 we have operated a series

of owl banding stations during the fall migration period along the Little Missouri River corridor, focusing on the Northern Saw-whet Owl *Aegolius acadicus* (NSWO). Owls were banded at four South Dakota sites in Custer and Black Hills National Forests, and in the south unit of Theodore Roosevelt National Park in North Dakota. Between 2011 and 2018, we banded 1,355 Saw-whets, 16 Eastern Screech-owls and 29 Long-eared Owls. Our banding stations experienced a peak in NSWO numbers every four years but each station's peak occurred in a different year, with South Dakota stations' peak occurring one year ahead of the North Dakota station. Because NSWO peaks are caused by exceptional breeding success the previous summer, our results suggest that owls moving through each of our banding stations are coming from different locations that had different years of peak breeding. During eight years of fall banding, we have recovered 12 owls banded by others outside of the western Dakotas, other banders have recovered seven of our banded owls, and we have recaptured nine of our own owls at a different western Dakotas station than where they were banded. Most of these 'exchanges' have occurred to the north or east of the Dakotas, but there are few banding stations to the west or south of the Dakotas. Continued owl banding in the western Dakotas will not only help us understand owl migration patterns in the Great Plains, but will continue to fill a gap in the continent-wide NSWO monitoring project.



Avian Surveys at Canyon Lake Park, Rapid City, SD

Gene K. Hess

INTRODUCTION

Canyon Lake Park, a 72 acre city park, is located on the western edge of Rapid City (Baker *et al.* 2012, Baker and Hess 2012). The park contains an approximately 28 acre body of water with an island and rocky peninsula of about 1 acre connected to the mainland by a bridge. The lake is fed by Rapid Creek and is formed by a dam. Immediately upstream is the Cleghorn Springs Fish Hatchery which also provides a steady stream of water into Rapid Creek at all seasons. The lake was created in the early 20th century and has undergone numerous changes in the ensuing years. The June 1972 flood caused much damage and the dam was replaced in 1976 (HDR Engineering Inc. 2008). A water bypass was installed in 2009 near where Rapid Creek enters Canyon Lake. The lake was drained in October 2014 for repairs to the dam and was refilled by early May 2015. During this period, waterbirds were forced into the relatively small areas created by Rapid Creek and shallow undrained areas.

Most of the park is mowed lawn with scattered plantings of deciduous and coniferous trees of varying age. A number of spruce trees on the north side along Jackson Blvd were removed in 2015. There are two small riparian areas and a cattail marsh along the edges of the park and a small butterfly garden. A number of man-made channels run through the park forming shallow pools in several places.

This paper summarizes overall results of weekly bird surveys conducted from October 2010 through February 2019. The detailed results for species will be presented in future publications.

METHODS AND RESULTS

From 6 October 2010 to 25 February 2019 multiple observers conducted a total of 423 weekly surveys. Of these, 111 were during the winter (December – February), 98 were in spring (March – May), 70 in summer (June – July), and 144 in fall (August – November).

During the survey period a total of 1,157 hours were spent surveying. An average of 2.8 ± 0.6 (range 1.25–5) hours was spent on each survey. Hess and/or co-leader Jocie Baker were present on all but ten surveys. Ten surveyors participated on twenty-seven or more surveys (Table 1). The median number of

surveyors was five. An additional twenty-eight observers helped on eleven (the next most frequent participant) or fewer surveys. An uncounted number of visitors accompanied the survey team either as part of fund raising efforts for various causes or simply out of curiosity.

Surveys were cancelled on the regularly scheduled dates only when weather conditions were poor, *i.e.* recent or imminent snowfall, rain/fog or high winds. On those occasions the survey was rescheduled for two to three days later. When the Rapid City Christmas Bird Count or West River Migration count occurred, Canyon Lake data from those events were accepted as the survey for that week.

In order to minimize missing early morning departing individuals, the surveys began within about one-half to three-quarters of an hour after sunrise during the winter when waterfowl are most abundant at the lake. At other times of the year surveys began up to about 1.5 hours after sunrise. We followed a route that covered the lake first then the park grounds.

Table 1. Observers and number of surveys in which they participated.

Name	Number of surveys	Participation period
Jocie Baker	369	"
2010–2019"		
Gene K Hess	336	2010–2019
Ingrid Arlton	264	October 2012–2019
Jackie Stucky-Strom	216	September 2012–2019
Larry Putnam	208	April 2013–2019
Lynn Barber	144	August 2011–August 2014
Judy Hengen	126	May 2015–2019
Renee Bryant	37	August 2012–September 2013
Eugene Zielinski	31	June 2012–May 2013
Rhonda Schwiert	27	September 2015–September 2017

We recorded a total of 162 species during the surveys. These included 27 species of waterfowl, 51 species of other non-songbird species and 84 songbird species. Details on numbers and timing of each species will be presented in upcoming issues of Bird Notes.

ACKNOWLEDGEMENTS

This survey was first conducted during the winters of 2003 – 2004 and 2004 – 2005 by Jocie Baker. She and Hess have co-led the surveys reported here. We thank Maurice V. Barnhill, III for permission to use his seasonal bar graph program. Mark Keese provided useful comments. Our thanks are extended to all the volunteers who helped on the surveys.

LITERATURE CITED

Baker, Jocelyn L. and G. K. Hess. 2012. Barrow's Goldeneye at Canyon Lake, Rapid City, SD (1970–2009). *South Dakota Bird Notes* 64:9–11.

Baker, Jocelyn L., L.E. Barber and G.K. Hess. 2012. Harlequin Duck at Rapid City, Winter 2011–2012. *South Dakota Bird Notes* 64:80–85.

HDR Engineering, Inc. 2008. Canyon Lake Dam study & report. City of Rapid City, South Dakota. DR04-1433

2018 Report of the Rare Bird Records Committee

David L. Swanson, University of South Dakota, Vermillion

The SDOU Rare Bird Records Committee (RBRC) met on 3 June 2018 at Martin and 4 November 2018 at Madison to act on reports for which there was not unanimous agreement after electronic discussion. The members of the committee were David Swanson (Chair and Secretary), Ricky Olson, Todd Jensen, J. David Williams, and Jeffrey Palmer. All members participated in the meetings or voted *in absentia*.

Springer (1988. *South Dakota Bird Notes* 40:67-70) outlined the purpose and voting procedures of the RBRC. The RBRC strongly encourages observers of rare or unusual birds in South Dakota to report their observations to the secretary of the RBRC (David Swanson of Vermillion, SD), preferably via email at david.swanson@usd.edu. A *Rare Bird Report Form* is available in electronic format for this purpose from David Swanson, or a form can be downloaded from <http://www.sdou.org/>, by clicking on the *Seasonal Reporting* link and then clicking on the link for the *Rare Bird Report Form*. A summary of the type of information desired by the RBRC in a rare bird report can be found in Swanson (2015. *South Dakota Bird Notes* 67:64-71).

The RBRC requests rare bird reports for species listed as hypothetical or accidental in the state, including species reported from a portion of the state or time of year where that species is listed as accidental. A listing of birds belonging to these categories in South Dakota is provided in the latest version of the checklist of South Dakota birds, accessible at <http://www.sdou.org/> by clicking on the *Seasonal Reporting* link and then clicking on the link for the *South Dakota State Checklist*. Information regarding species listed as accidental for only a portion of the state can be found in Tallman et al. (2002. *Birds of South Dakota*, 3rd edition, SDOU, Aberdeen, SD). The RBRC regularly adds or removes species from the review list, based on current data, and these changes to the review list are reported in the annual reports of the RBRC in *South Dakota Bird Notes*. In addition, reports are requested for observations listed in the "Species Requiring Acceptance by the Rare Bird Records Committee" section in the Seasonal Reports of *South Dakota Bird Notes*. Observers whose records are accepted (Classes 1 and 2) are encouraged to publish these records in *South Dakota Bird Notes*, so details of the observation can be communicated to a wider audience.

Following are the results of the committee's action since the last report in the Winter 2018 issue of *South Dakota Bird Notes* (Swanson, 2018. *South Dakota Bird Notes* 70:62-64). The parenthetical numbers accompanying some reports indicate the committee's vote. If no numbers are listed, the vote was unanimous (5-0) or 4-0 if a committee member submitted the report. The committee wishes to emphasize that a rating of Class 3 or 4 (non-accepted record) does not imply any personal criticism of the observer. Such a rating only means that the information provided in the report, in the opinion of the committee, did not conclusively eliminate other similar species.

CLASS 1 (Accepted - Specimen, photograph, or recording)

Eurasian Wigeon. 15 April 2018. One adult male near Wall, Pennington Co. Photographed. Richard Latuchie, Scott Stolz, Nancy Drilling. Sixth state record.

Neotropic Cormorant. 23 May 2018. One adult bird at Horseshoe Lake, Marshall Co. Photographed. Ricky Olson, Cheryl Vellenga. Casual visitor.

Red-shouldered Hawk. 28 January-4 February 2017. One adult at Lake Herman, Lake Co. Photographed. Jeffrey and Deanna Palmer. Casual visitor.

Red-shouldered Hawk. 18-22 September 2018. One juvenile at Brookings, Brookings Co. Photographed. Richard Todoroff, Margy Pearson, Gary Larson. Casual visitor.

Sandhill Crane. 10 July 2018. One near Little Bend, Sully Co. Photographed. Ricky Olson. Casual summer visitor.

- Arctic Tern. 21 May 2018. Fisherman's Point, Stanley Co. Photographed. Ricky Olson, Doug Backlund. Seventh state record.
- White-winged Dove. 16 July 2018. Two adult birds at Edgemont, Fall River Co. Photographed. Nathan Pieplow. Casual visitor.
- Anna's Hummingbird. 24 October 2017. One immature male at Ft. Pierre, Stanley Co. Photographed. Ricky Olson. Casual fall migrant.
- Calliope Hummingbird. 19-31 August 2018. One immature/female at Pierre, Hughes Co. Photographed. Ricky Olson. Casual fall migrant.
- Costa's Hummingbird. 17-26 October 2016. One immature male at Rapid City, Pennington Co. Photographed. Nancy Drilling. Second state record.
- Crested Caracara. 7-8 July 2018. One adult in Vanocker Canyon, Meade Co. Photographed. Ricky Olson. Second state record.
- Mourning Warbler. 15 May 2018. One adult male in Pennington Co. Photographed. Richard Latuchie. Accidental western South Dakota.
- Rose-breasted Grosbeak. 29 November-22 December 2017. One first winter male near Whitewood, Lawrence Co. Photographed. Vic and Donna Fondy. Second winter record.
- Green-tailed Towhee. 12-13 May 2014. One adult at Whitewood, Lawrence Co. Photographed. Jeffrey Palmer, Vic and Donna Fondy. Casual visitor.
- Cassin's Sparrow. 4 June 2018. 2 singing birds, probable males. West of Edgemont, Fall River Co. Photographed. Mark Otnes. Casual summer visitor far west.
- Eurasian Tree Sparrow. 26 April 2018. One adult at Vermillion, Clay Co. Photographed. Gary and Jan Small. Second state record.
- Eurasian Tree Sparrow. 3 May 2018. Two adults at Brandon, Minnehaha Co. Photographed. Terry Sohl. Third state record.

CLASS 2 (Accepted – Satisfactory written description)

- Little Blue Heron. 23 August 2018. Oglala Dam, Oglala Lakota Co. One white-phase bird. Peter Hill. Accidental western South Dakota.
- Yellow Rail. 2 October 2018. One bird near Pierre, Hughes Co. Ricky Olson, Kenny Miller, Dan Svingen. Casual migrant.
- White-winged Dove. 21 July 2018. One bird at Edgemont, Fall River Co. Nancy Drilling. Casual visitor. Likely one of the same birds photographed by Nathan Pieplow on 16 July 2018.
- White-winged Dove. 23 December 2017. One bird at Hot Springs, Fall River Co. Nancy Drilling. Casual visitor.
- White-eyed Vireo. 8 August 2017. One at Newton Hills State Park, Lincoln Co. Jeffrey Palmer. Casual migrant.
- Common Raven. 9 October 2016. One in Lake Co. Jeffrey and Deanna Palmer. Casual visitor.

Common Raven. 12 November 2017. One adult near Oahe Dam, Hughes Co. Ricky Olson. Casual visitor.

Common Raven. 18 March 2018. One adult in Haakon Co. Ricky Olson. Casual visitor.

Ruby-crowned Kinglet. 28 June 2018. One singing bird at Madison, Lake Co. Jeffrey Palmer. Accidental summer visitor in eastern South Dakota.

Townsend's Warbler. 2 September 2017. One female/immature in Hell Canyon, Custer Co. Jeffrey Palmer and David Swanson. Casual fall migrant.

Townsend's Warbler. 4 September 2018. Hell Canyon, Custer Co. Nancy Drilling. Casual fall migrant.

Townsend's Warbler. 9 September 2018. Shadehill Recreation Area, Perkins Co. Nancy Drilling. Casual fall migrant.

Orchard Oriole. 25 October 2017. One adult female at Spirit Mound Historic Prairie, Clay Co. David Swanson. Latest fall record.

CLASS 3 (Not accepted – Identification possibly correct but description not completely convincing)

Pinyon Jay. 1 July 2018. Flock of at least 5 birds at Slim Buttes, Harding Co. The report was a heard only report and the description of the calls, in the opinion of the committee, did not conclusively eliminate other Corvids. (4 Class 3, 1 Class 2).

Hoary Redpoll. 25 November 2017. One bird near Oahe Dam, Stanley Co. The view of the bird described in the report did not allow description of the back and rump and no description was provided of the bill. The pale underparts supported the identification as Hoary Redpoll, but dissenting committee members felt that Common Redpoll was not conclusively eliminated. (4 Class 3, 1 Class 2).

CLASS 4 (Not accepted – Identification probably or certainly incorrect or provenance likely not wild).

Chukar. 20 April-5 May 2018. One at Summerset, Meade Co. The bird was photographed and was definitely a Chukar, so the identification is not in question. However, because Chukars have failed to establish breeding populations in South Dakota and are routinely kept as captive birds for hunting trials, the committee unanimously agreed that the bird was most likely an escaped captive.

OTHER BUSINESS

The committee voted to remove the following species from the review list because of a number of recent records: White-winged Dove, Common Raven, Townsend's Warbler, and Neotropic Cormorant (East River only). The committee also voted to add Western Sandpiper back to the review list, as very few records have occurred for this species in the state since it was removed from the review list several years ago.

The committee voted to add two additional members to the committee to provide some additional representation from western South Dakota. David Swanson invited Nancy Drilling and Scott Stolz to serve on the committee and both accepted the invitation, so the committee will be composed of seven members beginning with the Spring 2018 meeting.

ERRATUM

The 2017 report of the Rare Bird Records committee contained the wrong dates for the first state record for Curlew Sandpiper (SDBN 70:63). The correct date for the Mark Otnes and David Swanson record is 19 May 2017 and the correct date for the Donald Weidemann record is 20 May 2017.

The Spring 2019 Seasonal Report

01 March 2019 to 31 May 2019

Compiled by Jeffrey S. Palmer
Dakota State University, Madison

Prolonged winter cold and snow resulted in one of the most delayed migrations that I can remember. First arrivals of numerous species were one and even two weeks or more later than usual. For the season, there were 310 species, including 9 rarities, reported. The ten-year (2009-2018) average is 321. Below, I have tried to highlight the more significant sightings (dates that are among the earliest/latest included in the online database and species that are out of range). For early/late migration dates, I have listed the three earliest/latest dates (by county); however, if these did not include a sighting East River, West River, and along the Missouri River, I have given the earliest/latest reported date in the missing region also. Finally, included at the end is a list of species (30) that were not reported this year and might be expected during the Spring Season. A species is placed on the list if it was not reported this year but had been reported during spring in at least 2 of the previous 5 years. Numbers in parentheses indicate the number of consecutive years (up to 4) that the species has appeared on the list during the season.

It began at the 1994 Fall SDOU Meeting with my mention of an interest in assisting with Seasonal Reports for *South Dakota Bird Notes*. Suddenly, the 1994 Fall Season Report was in my hands and the task of compiling Seasonal Reports for *South Dakota Bird Notes* was handed over to me. Now a short, and long, 25 years later, my tenure has come to an end. Along the way, there were 25 Fall Season, 17 Winter Season, 25 Spring Season and 16 Summer Season reports completed without, to the best of my recollection, a single missed deadline. In the early days, paper report forms were mailed to contributing observers at the end of each season. Once they were returned, the arduous process of sorting forms, species after species, and flipping pages eventually lead to a camera-ready version of the Seasonal Report which was mailed to the SDBN Editor. Some years later, we got to the point of being able to e-mail the report saving a little time and effort. The most significant change, however, came in 2003 with the rollout of the Seasonal Bird Observation Report System. This allowed us to collect observer sightings online and to generate a spreadsheet of seasonal sightings cutting the time to compile a report roughly in half and extending my willingness to continue as Seasonal Reports Editor. Along the way, there were five different Editors of SDBN and many others who carefully reviewed my reports before their publication. Hopefully, they were relatively error free! During the last 25 years, others have, at various times, helped with the compilation of some Winter and Summer reports - thank you to those individuals as that also contributed greatly to my longevity in the position. Mostly though, thank you to the many observers who have diligently contributed sightings to these reports. This really has been a compilation of your work and efforts. A special thank you to the individuals, you largely know who you are, who have so positively encouraged me over the years. This also, no doubt, contributed to my ability to continue with this work this long. Finally, thank you to my wife, Deanna, and kids, Joshua and Caleb, for putting up with my hobby and for understanding all the time that these reports took. For me it has been 25 years and in another 25, 50, or 100 years these reports will be particularly interesting and useful records for future birders in South Dakota. Thanks again to SDOU for having provided me with this opportunity over the last quarter century. Health, happiness, success, and good fortune!

Snow Goose Early: 01 Mar Brule ND; 15 Mar Charles Mix KP; 16 Mar McCook MKZ; 16 Mar Gregory RM; 02 Apr Meade ND

Ross's Goose Early: 18 Mar Minnehaha CA; 24 Mar Hughes RDO; 28 Mar Roberts CV ... Late: 05 May Hughes KM; 08 Apr Lincoln MKZ; 06 Apr Kingsbury JSP

Greater White-fronted Goose Early: 15 Mar Charles Mix KP; 16 Mar McCook MKZ; 16 Mar Gregory RM; 16 Mar Minnehaha CA ... Late: 16 Apr Marshall GO; 12 Apr Lincoln MKZ; 08 Apr Roberts CV; 27 Mar Hughes KM

Cackling Goose Early: 06 Mar Pennington CLG; 16 Mar McCook MKZ; 18 Mar Minnehaha CA; 20 Mar Charles Mix KP ... Late: **28 Apr Meade RSL**; 15 Apr Roberts CV; 14 Apr Stanley KM

Canada Goose Confirmed Breeding: 31 Mar Douglas (ON) KP

Trumpeter Swan reported 20 Apr Stanley KM

Tundra Swan Early: 23 Mar Roberts CV ... Late: 14 Apr Roberts CV

Wood Duck Early: 23 Mar Douglas KP; 23 Mar Lake JSP; 25 Mar Pennington CLG; 26 Mar Hughes KM

Blue-winged Teal Early: 26 Mar Charles Mix KP; 30 Mar Minnehaha CA, MKZ; 30 Mar Clay DS; 15 Apr Pennington CLG; 15 Apr Meade ND

Cinnamon Teal Early: 18 Apr Meade ND; 20 Apr Pennington CA; 12 May Fall River ND ... Late: 31 May Meade ND; 19 May Oglala Lakota ND

Northern Shoveler Early: 15 Mar Charles Mix KP; 22 Mar Stanley KM; 23 Mar Minnehaha MKZ; 23 Mar Lake JSP; 27 Mar Meade RSL

Gadwall Early: 02 Mar Pennington JLB; 11 Mar Minnehaha CA; 15 Mar Charles Mix KP

American Wigeon Early: 02 Mar Pennington JLB; 19 Mar Stanley RDO; 20 Mar Charles Mix KP; 23 Mar Lake JSP

Mallard Confirmed Breeding: 22 Apr Hutchinson (CN) KP

Northern Pintail Early: 12 Mar Stanley RDO; 15 Mar Charles Mix KP; 17 Mar Hughes KM; 22 Mar Butte RDO; 23 Mar Lake JSP; 23 Mar Roberts CV; 23 Mar Douglas KP

Green-winged Teal Early: 17 Mar Pennington ND; 20 Mar Charles Mix KP; 23 Mar Minnehaha MKZ; 23 Mar Custer JLB; 23 Mar Lake JSP

Canvasback Early: 15 Mar Charles Mix KP, RM; 23 Mar Lake JSP; 23 Mar Minnehaha MKZ; 27 Mar Meade RSL

Redhead Early: 02 Mar Pennington JLB; 11 Mar Charles Mix RM; 11 Mar Stanley KM; 23 Mar Lake JSP

Ring-necked Duck Early: 02 Mar Pennington JLB; 06 Mar Stanley RDO; 15 Mar Charles Mix KP; 23 Mar Lake JSP; 23 Mar Minnehaha MKZ

Greater Scaup Early: 06 Mar Stanley RDO; 15 Mar Charles Mix RM; 30 Mar Yankton DS; 31 Mar Douglas KP; 02 Apr Meade ND ... Late: 23 Apr Marshall GO; 08 Apr Roberts CV; 06 Apr Davison and Hanson CA; 01 Apr Yankton RND

Lesser Scaup Early: 02 Mar Pennington JLB; 12 Mar Stanley RDO; 15 Mar Charles Mix RM, KP; 23 Mar Lake JSP

Long-tailed Duck Early: 26 Mar Stanley RDO; 27 Mar Hughes RDO ... Late: 10 Apr Hughes KM, RDO; 28 Mar Stanley RDO

Bufflehead Early: 01 Mar Brule ND; 01 Mar Charles Mix RM; 02 Mar Pennington JLB; 23 Mar Kingsbury JSP; 23 Mar Minnehaha MKZ ... Late: 31 May Perkins ND; 14 May Hyde KM; 13 May Pennington CLG; 11 May Kingsbury JSP

Common Goldeneye Early: 01 Mar Brule ND; 01 Mar Charles Mix RM; 02 Mar Pennington JLB; 11 Mar Minnehaha CA ... Late: 09 May Harding KM; 26 Apr Charles Mix ND; 19 Apr Roberts CV; 19 Apr Lake JSP

Hooded Merganser Early: 01 Mar Brule ND; 12 Mar Stanley RDO; 15 Mar Charles Mix KP; 16 Mar McCook MKZ; 09 Apr Pennington MMM ... Late: 30 May Codington RSL; 28 May Lake JSP; 25 May Bennett ND; 25 May Brookings CA; 07 May Yankton RND

Common Merganser Late: 31 May Roberts RSL; 27 May Pennington CLG; 22 May Stanley RDO

Red-breasted Merganser Early: 01 Mar Charles Mix RM; 03 Mar Hughes RDO; 12 Mar Stanley RDO; 23 Mar Kingsbury JSP; 07 Apr Butte ND ... Late: 07 May Yankton RND; 06 May Stanley RDO; 26 Apr Hutchinson and Charles Mix ND; 25 Apr Butte ND

Ruddy Duck Early: 21 Mar Charles Mix RM; 30 Mar Minnehaha MKZ, CA; 30 Mar Lake JSP; 07 Apr Butte ND

Northern Bobwhite All Reports: **20 Mar Charles Mix RM**; 06 May Charles Mix RM

Gray Partridge All Reports: 04 Apr Custer MMM; 02 May Custer MMM

Wild Turkey Confirmed Breeding: 16 May Buffalo (ON) RDO

Pied-billed Grebe Early: 23 Mar Gregory KP; 27 Mar Charles Mix KP; 30 Mar Minnehaha MKZ, CA; 16 Apr Meade RSL

Horned Grebe Early: 23 Mar Charles Mix KP, RM; 27 Mar Stanley KM; 28 Mar Hughes KM; 28 Mar Gregory RM; 06 Apr Kingsbury JSP; 07 Apr Meade and Butte ND ... Late: 30 May Hughes DB; 11 May Meade RSL; 10 May Harding CEM; 02 May Jerauld KM

Red-necked Grebe All Reports: 23 Apr Marshall GO; 26 May Day CA; 29 May Roberts GO

Eared Grebe Early: 13 Apr Hughes KM; 16 Apr Marshall GO; 19 Apr Charles Mix RM; 20 Apr Pennington CA

Western Grebe Early: 16 Apr Stanley RDO; 20 Apr Lake JSP; 21 Apr Jackson CA; 21 Apr Stanley and Hughes KM

Clark's Grebe All Reports: 21 Apr Hughes and Stanley KM; 05 May Brown GO

Mourning Dove Early: 18 Mar Minnehaha CA; 24 Mar Lake JSP; 26 Mar Pennington RSL; 27 Mar Stanley KM

Yellow-billed Cuckoo Only Report: 18 May Lincoln MO

Black-billed Cuckoo All Reports: 17 May Minnehaha KM; 19 May Lincoln KM

Common Nighthawk Early: 16 May Brown GO; 19 May Lincoln CA, KP; 20 May Clay GJS; 20 May Marshall GO; 26 May Custer MMM

Common Poorwill All Reports: 11 May Fall River ND; 25 May Harding KM, CEM

Eastern Whip-poor-will Early: 02 May Charles Mix RM; 16 May Lincoln RDO; 20 May Minnehaha CA

Chimney Swift Early: 25 Apr Lake JSP; 27 Apr Douglas KP; 03 May Charles Mix KP; 18 May Pennington MMM

White-throated Swift Early: 20 Apr Jackson CA; 09 May Harding KM; 25 May Lawrence ND

Ruby-throated Hummingbird Early: 06 May Charles Mix RM; 07 May Minnehaha CA; 08 May Lake JSP

Virginia Rail Early: 29 Apr Lincoln CA; 06 May Faulk KM; 10 May Hughes RDO; 19 May Meade EK

Sora Early: 26 Apr Brookings CV; 26 Apr Minnehaha CA; 29 Apr Lincoln CA; 29 Apr Clay DS, JSP; 09 May Pennington ND

American Coot Early: 06 Mar Pennington CLG; 24 Mar Charles Mix KP; 27 Mar Stanley KM; 30 Mar Lake JSP; 30 Mar Minnehaha CA, MKZ

Sandhill Crane Early: 24 Mar Charles Mix RM; 26 Mar Douglas KP; 01 Apr Meade RSL ... Late: 05 May Brookings JSP; 25 Apr Butte ND; 24 Apr Roberts CV; 21 Apr Stanley KM

Whooping Crane Only Report: 30 Mar Charles Mix RM, KP

Black-necked Stilt All Reports: 03 May Charles Mix RM; 12 May Ziebach KM

American Avocet Early: 16 Apr Stanley RDO; 17 Apr Hughes KM; 18 Apr Meade ND; 20 Apr Kingsbury JSP

Black-bellied Plover Early: 12 May Sully RDO; 13 May Hughes RDO; 14 May Brown GO ... Late: 29 May Marshall and Roberts GO; 20 May Minnehaha MO; 14 May Sully KM

American Golden-Plover Early: 26 Apr Charles Mix ND; 27 Apr Turner ND; 27 Apr Kingsbury JSP ... Late: 19 May Douglas and Hutchinson KM; 19 May Lincoln KP, CA; 05 May Charles Mix KP

Semipalmated Plover Early: 27 Apr Turner ND; 02 May Meade ND; 04 May Union CA ... Late: 26 May Hanson ND; 25 May Moody CA; 24 May Pennington ND; 05 May Sully KM

Piping Plover Early: 17 Apr Stanley KM, RDO; 18 Apr Charles Mix RM; 02 May Hughes RDO

Killdeer Early: 16 Mar Minnehaha CA; 19 Mar Gregory and Charles Mix RM; 19 Mar Aurora and McCook KM; 21 Mar Custer RSL

Upland Sandpiper Early: 16 Apr Marshall GO; 27 Apr Minnehaha CA, MKZ; 27 Apr Custer MMM; 04 May Sully KM

Whimbrel Only Report: 12 May Sully RDO

Long-billed Curlew Early: 06 Apr Custer MMM; 06 Apr Pennington ND; 21 Apr Jackson and Mellette CA; 21 Apr Stanley KM

Hudsonian Godwit Early: 21 Apr Hutchinson CA; 26 Apr Brookings CV; 27 Apr Davison, Jerauld, and Turner ND; 27 Apr Douglas KP; 16 May Charles Mix RDO ... Late: 30 May Stanley RDO; 23 May Lincoln CA; 22 May Roberts MO

Marbled Godwit Early: 13 Apr Charles Mix KP; 14 Apr Hughes KM; 15 Apr Meade ND; 19 Apr Aurora CA; 19 Apr Brown GO

Ruddy Turnstone All Reports: 20 May Minnehaha MO; 26 May Kingsbury CA; 30 May Lyman RDO

Stilt Sandpiper Early: 04 May Lincoln CA; 12 May Sully RDO; 13 May Hughes RDO; 19 May Oglala Lakota ND ... Late: 31 May Meade ND; 29 May Hughes RDO; 25 May Stanley RDO; 22 May Douglas KP

Sanderling Early: 06 May Stanley RDO; 08 May Hughes KM; 14 May Sully KM; 26 May Kingsbury CA ... Late: 30 May Lyman RDO; 25 May Stanley RDO; 12 May Hughes RDO

Dunlin Early: 10 May Lincoln CA; 11 May Kingsbury JSP; 13 May Sully KM ... Late: 29 May Marshall GO; 25 May Moody CA; 25 May Stanley RDO

Baird's Sandpiper Early: 07 Apr Clay DS; 20 Apr Pennington CA; 21 Apr Douglas and Jackson CA ... Late: 26 May Hanson ND; 25 May Moody CA; 24 May Pennington ND; 14 May Yankton and Clay RND; 14 May Sully KM

Least Sandpiper Early: 26 Apr Charles Mix ND; 02 May Meade ND; 02 May Hughes RDO; 04 May Lincoln MKZ ... Late: 25 May Clark and Moody CA; 24 May Pennington ND; 14 May Yankton and Clay RND

White-rumped Sandpiper Early: 04 May Union CA; 12 May Hughes RDO; 14 May Sully KM; 16 May Douglas KP; 16 May Hutchinson RDO; 16 May Lincoln MO; 16 May Turner RDO, CA

Buff-breasted Sandpiper Only Report: 16 May Turner RDO

Pectoral Sandpiper Early: 13 Apr Clay DS; 23 Apr Moody CA; 24 Apr Lincoln CA; 27 Apr Meade RSL ... Late: 31 May Stanley RDO; 30 May Douglas KP; 29 May Marshall GO

Semipalmated Sandpiper Early: 27 Apr Douglas KP; 02 May Meade ND; 04 May Lincoln MKZ, CA; 04 May Union CA ... Late: 30 May Stanley RDO; 25 May Clark CA; 24 May Pennington ND

Long-billed Dowitcher Early: 13 Apr Clay GJS; 21 Apr Hutchinson CA; 29 Apr Lincoln CA; 29 Apr Douglas KP; 03 May Custer MMM ... Late: 16 May Brown GO; 16 May Charles Mix RDO; 15 May Douglas KP; 10 May Harding CEM

American Woodcock Early: 18 Mar Charles Mix RM; 27 Mar Minnehaha CA; 28 Mar Hughes KM

Wilson's Snipe Early: 28 Mar Brown GO; 30 Mar Clay GJS; 01 Apr Tripp RDO ... Confirmed Breeding: 16 May Clay (NE) DS

Spotted Sandpiper Early: 26 Apr Yankton RND; 27 Apr McCook CA, MKZ; 29 Apr Pennington CLG

Solitary Sandpiper Early: 22 Apr Pennington CLG; 28 Apr Harding ND; 30 Apr Sully KM; 02 May Brown GO ... Late: 26 May Hughes RDO; 22 May Stanley RDO; 20 May Union MO; 16 May Lincoln MO; 09 May Harding KM

Lesser Yellowlegs Early: 31 Mar Douglas KP; 04 Apr Charles Mix RM; 06 Apr Davison CA; 20 Apr Pennington CA ... Late: 20 May Minnehaha MO; 16 May Edmunds GO; 16 May Lincoln MO; 11 May Clay GJS; 05 May Perkins ND

Willet Early: 21 Apr Hughes KM; 22 Apr Custer MMM; 23 Apr Sully RDO; 02 May Jerauld KM

Greater Yellowlegs Early: 28 Mar Douglas KP; 04 Apr Charles Mix RM; 05 Apr Custer MMM ... Late: 22 May Charles Mix KP; 20 May Minnehaha MO; 15 May Douglas KP; 28 Apr Butte ND

Wilson's Phalarope Early: 23 Apr Charles Mix RM; 24 Apr Lincoln CA; 27 Apr Stanley RDO; 27 Apr Douglas KP; 01 May Harding CEM

Red-necked Phalarope Early: 09 May Harding KM; 12 May Fall River ND; 24 May Pennington ND; 25 May Stanley RDO; 26 May Hanson ND ... Late: 31 May Stanley RDO; 10 May Harding KM, CEM

Bonaparte's Gull Early: 24 Mar Charles Mix RM; 30 Mar Lake JSP; 06 Apr Kingsbury JSP; 06 Apr Hanson CA; 06 Apr Gregory KP; 27 Apr Meade RSL ... Late: 30 May Hughes DB; 22 May Stanley RDO; 11 May Kingsbury JSP

Franklin's Gull Early: 14 Mar Charles Mix RM; 19 Mar Stanley RDO; 20 Mar Gregory RM; 26 Mar Lincoln MKZ; 31 Mar Butte ND

Mew Gull All Reports: 10 Apr Hughes RDO; **14 Apr Stanley RDO**

Ring-billed Gull Early: 08 Mar Hughes RDO; 11 Mar Charles Mix RM; 12 Mar Stanley RDO; 22 Mar Brown GO; 24 Mar Butte RSL

California Gull Early: 05 Mar Hughes RDO; 12 Mar Stanley RDO; 15 Mar Charles Mix KP; 23 Mar Pennington JLB; 27 Mar Roberts CV

Herring Gull Early: 03 Mar Hughes RDO; 11 Mar Charles Mix RM; 11 Mar Stanley KM; 23 Mar Lake JSP ... Late: 29 Apr Stanley RDO; 27 Apr Kingsbury JSP; 26 Apr Brookings CV

Thayer's Gull All Reports: 12 Apr Hughes KM; 13 Apr Stanley RDO

Iceland Gull Early: 05 Mar Hughes RDO; 19 Mar Stanley RDO ... Late: **15 Apr Stanley KM, RDO**; 20 Mar Hughes KM

Lesser Black-backed Gull Early: 30 Mar Lake JSP; 07 Apr Stanley RDO; 10 Apr Hughes RDO ... Late: 06 May Stanley RDO

Glaucous Gull Late: **14 Apr Stanley KM**; 03 Apr Hughes RDO

Great Black-backed Gull Early: 07 Apr Stanley RDO; 08 Apr Charles Mix RM ... Late: **23 Apr Stanley RDO, KM**

Least Tern Early: **02 May Gregory and Charles Mix RM**; 22 May Stanley RDO, KM; 24 May Yankton KP

Caspian Tern Early: 17 Apr Stanley KM; 20 Apr Butte JLB; 25 Apr Charles Mix RM; 05 May Brown GO ... Late: 30 May Hughes KM, DB; 28 May Stanley RDO; 26 May Clark and Day CA; 19 May Meade EK

Black Tern Early: 05 May Stanley KM; 08 May Hughes KM; 11 May Lincoln CA, MKZ; 11 May Kingsbury JSP; 19 May Oglala Lakota ND

Common Tern Early: 22 Apr Stanley RDO; 26 Apr Charles Mix ND; 02 May Hughes RDO; 25 May Brookings CA

Forster's Tern Early: 17 Apr Stanley RDO, KM; 21 Apr Charles Mix RM; 21 Apr Mellette CA; 23 Apr Brown GO

Common Loon Early: 23 Mar Charles Mix RM, KP; 27 Mar Gregory RM; 28 Mar Hughes KM; 05 Apr Minnehaha CA; 07 Apr Meade ND, JLB

Double-crested Cormorant Early: 28 Mar Hughes KM; 28 Mar Stanley RDO; 30 Mar Minnehaha CA, MKZ; 07 Apr Butte ND

American White Pelican Early: 23 Mar Gregory RM; 30 Mar Lake JSP; 02 Apr Stanley RDO; 06 Apr Meade JLB, ND

American Bittern Early: 19 Apr Hughes KM; 21 Apr Clay GJS; 24 Apr Lincoln CA; 12 May Fall River ND

Great Blue Heron Early: 02 Mar Pennington JLB; 22 Mar Stanley KM; 23 Mar Charles Mix KP; 23 Mar Meade ND; 23 Mar Gregory RM; 30 Mar Minnehaha MKZ, CA; 30 Mar Lake JSP

Great Egret Early: 06 Apr Kingsbury JSP; 13 Apr Minnehaha CA; 17 Apr Stanley KM, RDO; 17 Apr Lincoln RM; 12 May Butte EK

Snowy Egret Early: 22 Apr Hutchinson KP; 24 Apr Charles Mix RM; 05 May Sully and Stanley KM

Cattle Egret Early: 19 Apr Douglas KP; 22 Apr Gregory RM; 25 Apr Charles Mix RM

Green Heron Early: 14 May Lake JSP; 15 May Brown GO; 18 May Minnehaha GJS et. al

Black-crowned Night-Heron Early: 22 Apr Brown GO; 07 May Yankton RND; 07 May Douglas KP; 10 May Harding KM, CEM

Yellow-crowned Night-Heron Only Report: 31 May Roberts RSL

Glossy Ibis All Reports: 05 May Hughes KM; 10 May Sully RDO

White-faced Ibis Early: 18 Apr Brown CV; 24 Apr Hughes KM; 26 Apr Brookings CV; 05 May Perkins ND

Turkey Vulture Early: 23 Mar Clay DS; 24 Mar Meade EEM; 28 Mar Minnehaha CA

Osprey Early: **24 Mar Pennington JLB**; 09 Apr Charles Mix RM; 14 Apr Lawrence EK; 21 Apr Minnehaha ND

Northern Harrier Early: 01 Mar Meade ND; 12 Mar Pennington RSL; 12 Mar Charles Mix RM; 19 Mar Day WS; 19 Mar Aurora KM

Sharp-shinned Hawk Late: 19 Apr Stanley KM; 15 Apr Hughes KM; 02 Apr Roberts CV; 18 Mar Pennington RSL

Cooper's Hawk Confirmed Breeding: 10 Apr Stanley (NB) RDO

Northern Goshawk Only Report: 25 Apr Lawrence ND

Broad-winged Hawk Early: 17 Apr Stanley RDO, KM; 21 Apr Minnehaha ND; 22 Apr Douglas KP; 22 Apr Hughes EDS; 22 Apr Brown GO; 05 May Perkins ND ... Late: 31 May Hughes DB; 31 May Hyde KM; 25 May Brookings CA; 11 May Harding KM

Swainson's Hawk Early: 06 Apr Hanson CA; 13 Apr Clay DS; 17 Apr Stanley RDO, KM; 17 Apr Bon Homme RM; 19 Apr Pennington MMM

Rough-legged Hawk Late: 25 Apr Butte ND; 21 Apr Stanley KM; 15 Apr Meade ND; 13 Apr Lake JSP

Ferruginous Hawk Early: 01 Mar Meade ND; 06 Mar Stanley RDO; 17 Mar Pennington ND; 16 Apr Brown GO

Golden Eagle Late: 16 Apr Stanley RDO; 15 Mar Charles Mix KP

Barn Owl Only Report: 18 Apr Stanley RDO

Eastern Screech-Owl Confirmed Breeding: 15 Apr Harding (ON) CEM

Burrowing Owl Early: 05 Apr Custer MMM; 09 Apr Pennington MMM; 09 Apr Hughes RDO

Barred Owl All Reports: 03 May Minnehaha CA; 13 May Lincoln CA; 21 May Lincoln MO

Long-eared Owl Confirmed Breeding: 13 May Stanley (NY) KM

Short-eared Owl Confirmed Breeding: 18 Apr Meade (CN) ND; 13 May Custer (CF) MMM

Northern Saw-whet Owl Confirmed Breeding: 23 Apr Harding (NE) CEM

Belted Kingfisher Early: 06 Mar Pennington CLG; 25 Mar Charles Mix RM; 28 Mar Hughes KM; 05 Apr Minnehaha CA

Red-headed Woodpecker Early: 26 Apr Clay GJS; 04 May Lincoln CA, MKZ; 04 May Roberts CV; 18 May Pennington MMM

Yellow-bellied Sapsucker Early: 30 Mar Yankton DS; 07 Apr Lake JSP; 13 Apr Clay GJS; 13 Apr Union DS

Red-naped Sapsucker All Reports: 26 Apr Pennington ND; 28 Apr Lawrence ND; 04 May Lawrence EK

American Three-toed Woodpecker Only Report: 04 May Lawrence EK

Northern Flicker Early: 02 Mar Charles Mix KP; 06 Mar Stanley RDO, KM; 06 Mar Pennington CLG; 07 Mar Roberts CV

Merlin Late: 21 Apr Pennington CA; 18 Apr Stanley KM; 18 Apr Clay GJS; 07 Mar Douglas KP

Peregrine Falcon Early: 17 Apr Minnehaha CA; 18 Apr Clay GJS; 30 Apr Hughes RDO, KM; 05 May Perkins ND ... Late: 22 May Charles Mix KP; 13 May Minnehaha CA; 11 May Kingsbury JSP

Prairie Falcon Late: **12 May Hutchinson KP**

Olive-sided Flycatcher Early: 11 May Union DS; 14 May Brown GO; 17 May Lincoln MO, RDO ... Late: 29 May Marshall GO; 29 May Hyde KM; 28 May Minnehaha KM; 28 May Hughes DB

Western Wood-Pewee All Reports: 15 May Pennington RSL; 27 May Pennington CLG; 31 May Pennington ND

Eastern Wood-Pewee Early: 03 May Charles Mix KP; 07 May Yankton RND; 14 May Stanley RDO; 14 May Minnehaha CA; 14 May Hyde KM

Yellow-bellied Flycatcher Early: 18 May Minnehaha MO, RDO; 18 May Union DS; 19 May Lincoln MO ... Late: 31 May Brown GO; 29 May Hyde KM; 29 May Charles Mix KP; 29 May Hughes DB

Alder Flycatcher Early: 18 May Minnehaha MO, RDO; 25 May Moody CA; 26 May Day CA; 27 May Hughes RDO ... Late: 31 May Clay DS; 31 May Hyde KM; 30 May Hughes KM; 30 May Buffalo RDO; 30 May Miner JSP

Willow Flycatcher Early: 06 May Minnehaha CA; 11 May Union DS; 13 May Charles Mix RM; 17 May Custer MMM

Least Flycatcher Early: 03 May Minnehaha CA; 04 May Harding ND; 04 May Hughes KM

Dusky Flycatcher Only Report: 31 May Pennington ND

Eastern Phoebe Early: 21 Mar Charles Mix RM; 01 Apr Yankton RND; 06 Apr Minnehaha and Hanson CA; 06 Apr Gregory KP; 14 May Custer MMM

Say's Phoebe Early: 05 Apr Custer MMM; 13 Apr Hughes RDO; 13 Apr Stanley KM; 26 May Day CA

Great Crested Flycatcher Early: 05 May Union RDO; 16 May Lincoln CA, MO; 16 May Charles Mix RM; 16 May Edmunds GO; 16 May Hughes KM; 25 May Harding CEM

Western Kingbird Early: 19 Apr Roberts CV; 25 Apr Hughes KM; 30 Apr Sully KM; 11 May Fall River ND

Eastern Kingbird Early: 23 Apr Stanley RDO; 26 Apr Yankton RND; 02 May Gregory RM; 11 May Kingsbury JSP; 15 May Pennington RSL

Loggerhead Shrike Early: 12 Apr Custer MMM; 15 Apr Roberts CV; 16 Apr Clay DS, GJS

Northern Shrike Late: 06 Apr Sanborn CA; 02 Apr Stanley KM; 31 Mar Union CA

Bell's Vireo Early: 16 May Hughes EDS; 25 May Bennett ND; 26 May Clay GJS

Yellow-throated Vireo Early: 05 May Union and Lincoln RDO; 13 May Lake JSP

Blue-headed Vireo Early: 04 May Union CA; 06 May Minnehaha CA; 09 May Hughes EDS ... Late: 25 May Moody CA; 23 May Hughes EDS; 23 May Lincoln CA

Philadelphia Vireo Early: 14 May Charles Mix RM; 16 May Lincoln CA; 16 May Buffalo RDO; 16 May Hughes KM ... Late: 31 May Hughes EDS, DB; 29 May Lake JSP; 29 May Hyde KM

Warbling Vireo Early: 05 May Union and Lincoln RDO; 06 May Clay GJS; 25 May Lawrence ND

Red-eyed Vireo Early: 05 May Union and Lincoln RDO; 14 May Clay RND; 27 May Pennington CLG

Black-billed Magpie reported 18 Mar Stanley RDO; 19 Apr Stanley KM; 16 May Lyman RDO

American Crow Confirmed Breeding: 18 Mar Pennington (CN) CLG

Common Raven Only Report: 10 May Harding KM, CEM

Purple Martin Early: 14 Apr Douglas KP; 20 Apr Stanley RDO; 22 Apr Hughes EDS

Tree Swallow Early: 27 Mar Meade EEM; 06 Apr Charles Mix KP; 06 Apr Lake JSP

Violet-green Swallow Early: 30 Apr Pennington ND; 10 May Harding CEM, KM; 11 May Fall River ND

Northern Rough-winged Swallow Early: 18 Apr Stanley RDO, KM; 21 Apr Minnehaha ND; 22 Apr Charles Mix RM; 29 Apr Pennington CLG

Bank Swallow Early: 25 Apr Stanley KM, RDO; 27 Apr McCook CA, MKZ; 28 Apr Hughes KM; 11 May Harding KM

Cliff Swallow Early: 23 Apr Sully RDO; 24 Apr Charles Mix KP; 25 Apr Stanley KM; 27 Apr McCook CA, MKZ; 28 Apr Butte ND

Barn Swallow Early: 16 Apr Clay DS; 17 Apr Douglas KP; 20 Apr Kingsbury JSP; 20 Apr Meade JLB

Red-breasted Nuthatch Late: 31 May Lake JSP; 30 May Stanley RDO; 29 May Roberts GO, CV

Pygmy Nuthatch All Reports: 22 Mar Pennington RDO; 23 Mar Pennington ND; 23 Apr Pennington ND

Brown Creeper Late: 20 May Charles Mix RM; 02 May Lake JSP; 23 Apr Marshall and Day GO; 23 Apr Roberts CV

Rock Wren Early: 28 Apr Harding ND; 12 May Fall River ND

Canyon Wren All Reports: 21 Mar Custer RSL; 07 Apr Lawrence ND; 12 May Fall River ND; 27 May Lawrence EK

House Wren Early: 21 Apr Clay GJS; 22 Apr Charles Mix RM; 23 Apr Stanley KM; 27 Apr Pennington ND; 29 Apr Minnehaha CA

Winter Wren All Reports: 12 Apr Douglas KP; 18 Apr Stanley KM; 23 Apr Day GO

Sedge Wren Early: 29 Apr Clay DS; 04 May Lincoln CA; 06 May Lake JSP

Marsh Wren Early: 23 Apr Hughes KM; 29 Apr Lincoln CA; 02 May Clay GJS; 19 May Oglala Lakota ND

Blue-gray Gnatcatcher Early: 24 Apr Charles Mix KP; 03 May Minnehaha CA; 04 May Lincoln and Union CA

American Dipper All Reports: 07 Apr Lawrence ND; 25 May Lawrence ND; 27 May Lawrence EK

Golden-crowned Kinglet Late: 03 May Brown GO; 24 Apr Edmunds GO; 23 Apr Day and Marshall GO; 21 Apr Clay GJS

Ruby-crowned Kinglet Early: 06 Apr Union DS; 10 Apr Douglas KP; 10 Apr Hughes KM; 28 Apr Lawrence ND ... Late: 19 May Lincoln KP; 18 May Minnehaha RND, CA, RSL; 15 May Charles Mix KP

Eastern Bluebird Early: 15 Mar Charles Mix KP; 19 Mar Gregory RM; 23 Mar Kingsbury JSP; 01 Apr Tripp RDO

Mountain Bluebird Early: 10 Mar Meade EEM; 12 Mar Pennington ND; 17 Mar Jackson ND; 20 Mar Stanley RDO

Townsend's Solitaire All Reports: 06 Mar Pennington CLG; 12 Mar Stanley RDO; 08 Apr Pennington CLG

Veery Early: 10 May Minnehaha CA; 14 May Brown GO; 16 May Buffalo RDO

Gray-cheeked Thrush Early: 06 May Faulk KM; 07 May Stanley KM; 09 May Harding KM; 09 May Hughes EDS ... Late: **30 May Hughes DB**; 29 May Marshall GO; 25 May Harding CEM

Swainson's Thrush Early: 01 May Douglas KP; 01 May Brown GO; 03 May Charles Mix KP; 03 May Roberts CV; 05 May Harding CEM, ND; 05 May Perkins ND

Hermit Thrush Early: 10 Apr Douglas KP; 10 Apr Clay GJS; 13 Apr Union DS; 10 May Harding CEM ... Late: 11 May Harding KM; 09 May Stanley RDO; 02 May Brown GO

Wood Thrush Early: 05 May Union and Lincoln RDO; 13 May Charles Mix RM

Varied Thrush Only Report: **12 Apr Charles Mix RM**

Gray Catbird Early: 26 Apr Brookings CV; 30 Apr Charles Mix RM; 05 May Union and Lincoln RDO; 09 May Pennington ND

Brown Thrasher Early: 14 Apr Clay DS; 23 Apr Stanley KM; 24 Apr Hughes KM; 24 Apr Charles Mix RM; 25 Apr Lake JSP; 28 Apr Butte ND

Sage Thrasher All Reports: 04 May Harding CEM, ND; 04 May Butte ND

Northern Mockingbird All Reports: 13 May Union DS; 18 May Lincoln KM

American Pipit All Reports: 13 Apr Hughes KM; 27 Apr Minnehaha MKZ, CA; 28 Apr Butte ND; **31 May Perkins ND**

Purple Finch Late: **22 May Roberts CV**; 20 Apr Lake JSP; 05 Apr Douglas KP; 31 Mar Sully KM

Cassin's Finch Only Report: 24 Apr Custer ND

Red Crossbill Late: 26 May Day CA

Common Redpoll Late: 07 Apr Roberts CV; 01 Apr Brown GO

Pine Siskin Late: 29 May Brown GO; 26 May Hughes RDO; 26 May Roberts CV

Lapland Longspur Late: 13 Apr Lake JSP; 10 Apr Stanley RDO; 01 Apr Roberts CV; 07 Mar Meade ND

Chestnut-collared Longspur Early: 18 Apr Custer MMM; 28 Apr Harding and Butte ND; 05 May Sully KM; 06 May Faulk KM, MMM

Snow Bunting All Reports: 06 Mar Roberts CV; 16 Mar Marshall CV; 17 Mar Roberts CV; 19 Mar Hughes RDO; 26 Mar Roberts CV

Ovenbird Early: 06 May Minnehaha CA; 06 May Brown GO; 09 May Stanley RDO; 25 May Harding KM; 25 May Lawrence ND

Northern Waterthrush Early: 02 May Jerauld MK; 03 May Minnehaha CA; 04 May Brown GO; 05 May Clay GJS; 05 May Sully KM; 09 May Ziebach KM ... Late: 29 May Charles Mix KP; 23 May Hughes EDS; 21 May Brown GO; 21 May Minnehaha MO; 11 May Harding KM

Golden-winged Warbler Early: 16 May Lincoln MO; 17 May Union MO; 17 May Minnehaha KM ... Late: **29 May Hyde KM**; 28 May Hughes DB, RDO; 21 May Brown GO; 21 May Lincoln MO

Blue-winged Warbler Early: **05 May Lincoln RDO**; 12 May Lake NS; 18 May Union DS

Black-and-white Warbler Early: 02 May Lake JSP; 02 May Yankton RND; 03 May Brown GO; 03 May Minnehaha CA; 05 May Perkins ND ... Late: 29 May Marshall GO; 29 May Hughes DB; 23 May Edmunds and Brown GO

Tennessee Warbler Early: 05 May Lincoln and Union RDO; 09 May Charles Mix RM; 18 May Pennington MMM

Orange-crowned Warbler Early: 18 Apr Stanley KM; 21 Apr Minnehaha ND; 22 Apr Douglas KP; 22 Apr Hughes EDS; 22 Apr Brown GO; 22 Apr Pennington CLG ... Late: 29 May Hyde KM; 28 May Brown GO; 27 May Pennington CLG

Nashville Warbler Early: 05 May Union RDO; 06 May Brown GO; 08 May Roberts CV ... Late: **29 May Roberts CV, GO**; 29 May Marshall GO; 28 May Brown GO; 26 May Union ND

Connecticut Warbler All Reports: 18 May Lincoln KP, MO, RDO; 18 May Lincoln RDO; 19 May Lincoln CA; 26 May Day CA

Mourning Warbler Early: 17 May Brown GO; 17 May Hughes EDS; 18 May Minnehaha KM et al; 18 May Lincoln KM, KP, MO; 18 May Union DS ... Late: 30 May Hughes KM; 29 May Marshall GO; 29 May Hyde KM

Common Yellowthroat Early: 26 Apr Stanley KM; 02 May Clay GJS; 04 May Harding ND; 05 May Brown GO; 05 May Lincoln RDO

Hooded Warbler All Reports: 16 May Lincoln MO; **26 May Lincoln ND**

American Redstart Early: **26 Apr Charles Mix RM**; 05 May Lincoln and Union RDO; 10 May Pennington ND

Cape May Warbler Early: 11 May Kingsbury JSP; 17 May Hughes EDS; 20 May Hyde KM ... Late: **31 May Hyde KM**; 29 May Marshall GO; 28 May Brown GO

Northern Parula Early: 18 May Minnehaha CA; 18 May Union DS; 19 May Lincoln MO ... Late: 29 May Hughes DB; 28 May Roberts CV; 26 May Union ND

Magnolia Warbler Early: 14 May Brown GO; 14 May Lake JSP; 16 May Edmunds GO; 16 May Hughes EDS ... Late: 30 May Hughes KM; 30 May Buffalo RDO; 29 May Lake JSP; 29 May Marshall GO; 29 May Hyde KM

Bay-breasted Warbler Early: 17 May Brown GO; 18 May Minnehaha CA et. al; 18 May Union DS; **25 May Harding KM, CEM** ... Late: 29 May Hyde KM; 29 May Roberts CV; 29 May Brown and Marshall GO

Blackburnian Warbler Early: 11 May Kingsbury JSP; 17 May Union MO, DS; 18 May Minnehaha RDO et. al ... Late: 28 May Lake JSP; 28 May Brown GO; 26 May Turner ND; 20 May Union MO

Yellow Warbler Early: 03 May Minnehaha CA; 03 May Clay GJS; 03 May Charles Mix KP; 05 May Pennington RSL

Chestnut-sided Warbler Early: 05 May Union RDO; 06 May Charles Mix RM; 14 May Hyde KM; 15 May Minnehaha CA; 27 May Harding ND, CEM ... Late: 31 May Charles Mix RM; 29 May Hyde KM; 29 May Roberts CV, GO; 29 May Hughes DB; 29 May Marshall and Day GO; 29 May Lake JSP

Blackpoll Warbler Early: 05 May Lincoln RDO; 06 May Minnehaha CA; 09 May Brown GO; 09 May Stanley RDO; 09 May Hughes EDS; 09 May Pennington ND ... Late: 31 May Clay DS; 31 May Perkins ND; 31 May Hughes DB; 29 May Marshall GO

Black-throated Blue Warbler All Reports: 19 May Union RSL; 20 May Union MO

Palm Warbler Early: 28 Apr Yankton RND; 02 May Gregory RM; 03 May Charles Mix RM; 03 May Brown GO; 03 May Minnehaha CA; 03 May Clay GJS; 09 May Ziebach KM ... Late: 20 May Marshall GO; 20 May Hyde KM; 19 May Lincoln KM; 18 May Pennington MMM

Yellow-rumped Warbler Early: 20 Mar Charles Mix RM; 11 Apr Clay GJS; 12 Apr Douglas KP; 22 Apr Pennington CLG ... Late: 29 May Brown GO; 25 May Moody and Brookings CA; 25 May Hughes RDO; 25 May Roberts CV

Black-throated Green Warbler Early: 05 May Union RDO; 18 May Minnehaha MO, MKZ; 18 May Lincoln KM ... Late: **29 May Marshall GO**; 20 May Union MO; 19 May Minnehaha CA; 19 May Lincoln KM

Canada Warbler Early: 16 May Buffalo RDO; 18 May Minnehaha RDO, MO; 18 May Union DS ... Late: 30 May Hughes DB; 30 May Buffalo RDO; 29 May Marshall GO; 29 May Hyde KM

Wilson's Warbler Early: 09 May Lincoln MKZ; 16 May Hughes EDS; 17 May Minnehaha CA ... Late: **29 May Hyde KM**; 28 May Lake JSP; 27 May Brown GO

Yellow-breasted Chat Early: 16 May Hughes KM; 16 May Buffalo RDO; 20 May Hyde KM; 25 May Edmunds GO

Spotted Towhee Early: 12 Apr Hughes KM; 18 Apr Stanley KM; 21 Apr Pennington CA; 02 May Jerauld KM

Eastern Towhee Early: 18 Apr Clay GJS; 25 Apr Charles Mix RM; 04 May Union and Lincoln CA; 04 May Gregory RM

American Tree Sparrow Late: 23 Apr Marshall GO; 21 Apr Clay GJS; 19 Apr Roberts CV; 19 Apr Stanley KM; 18 Apr Meade ND

Chipping Sparrow Early: 09 Apr Roberts CV; 11 Apr Douglas KP; 13 Apr Gregory KP; 13 Apr Clay GJS; 22 Apr Custer MMM

Clay-colored Sparrow Early: 24 Apr Clay DS; 27 Apr McCook and Minnehaha CA, MKZ; 27 Apr Meade RSL; 27 Apr Stanley KM

Brewer's Sparrow Early: 04 May Butte ND; 05 May Harding ND; 12 May Fall River ND

Field Sparrow Early: 06 Apr Charles Mix KP; 13 Apr Union DS; 19 Apr Clay GJS; 20 Apr Lincoln ND; 28 Apr Harding ND

Vesper Sparrow Early: 06 Apr Davison and Hanson CA; 07 Apr Douglas KP; 09 Apr Custer MMM; 13 Apr Union DS

Lark Sparrow Early: 24 Apr Lincoln CA; 24 Apr Charles Mix KP; 27 Apr Stanley KM; 27 Apr McCook MKZ, CA; 27 Apr Lake JSP; 28 Apr Harding ND

Lark Bunting Early: 05 May Perkins ND; 10 May Harding KM, CEM; 12 May Ziebach KM; 12 May Fall River ND; 12 May Butte EK; 12 May Sully RDO; 12 May Pennington MMM; 20 May Marshall GO

Savannah Sparrow Early: 13 Apr Charles Mix RM; 13 Apr Union DS; 15 Apr Roberts CV; 18 Apr Meade ND

Grasshopper Sparrow Early: 24 Apr Custer MMM; 05 May Lyman RDO; 05 May Butte EK; 19 May Lincoln CA

Baird's Sparrow Early: 10 May Harding CEM; 12 May Fall River ND; 13 May Custer MMM

LeConte's Sparrow All Reports: **23 Apr Clay GJS**; 29 Apr Clay DS; 10 May Lake JSP; 14 May Clay DS

Nelson's Sparrow All Reports: **14 May Clay DS**; 16 May Clay DS; 20 May Clay MO, GJS

Fox Sparrow Early: 23 Mar Lake JSP; 29 Mar Clay GJS; 30 Mar Yankton DS ... Late: **18 May Minnehaha RND**; 04 May Brown GO; 02 May Jerauld KM; 26 Apr Yankton RND

Song Sparrow Early: 24 Mar Butte RSL; 25 Mar Sully KM; 26 Mar Pennington RSL; 26 Mar Minnehaha CA

Lincoln's Sparrow Early: 13 Apr Charles Mix KP; 13 Apr Gregory KP, RM; 20 Apr Clay GJS; 22 Apr Brown GO; 22 Apr Lake JSP; 25 Apr Pennington MMM ... Late: 24 May Lincoln MKZ; 22 May Pennington ND; 22 May Harding CEM; 20 May Hyde KM

Swamp Sparrow Early: 12 Apr Lincoln MKZ; 13 Apr Clay GJS; 13 Apr Union DS

White-throated Sparrow Early: 03 Mar Clay GJS; 05 Apr Lincoln MKZ; 09 Apr Charles Mix RM; 05 May Perkins ND ... Late: 31 May Hyde KM; 28 May Minnehaha KM; 25 May Moody CA; 24 May Harding CEM

Harris's Sparrow Early: 30 Mar Lake JSP; 30 Mar Yankton DS; 04 Apr Clay GJS; 12 May Harding KM ... Late: 24 May Harding CEM; 23 May Roberts CV; 23 May Stanley RDO

White-crowned Sparrow Early: 29 Mar Charles Mix RM; 21 Apr Jones CA; 23 Apr Stanley RDO, KM; 02 May Douglas KP ... Late: 25 May Bennett ND; 24 May Harding CEM; 23 May Stanley RDO; 20 May Marshall GO

Dark-eyed Junco Late: 27 May Yankton KP; 11 May Lincoln CA, MKZ; 06 May Charles Mix RM

Scarlet Tanager Early: 13 May Union DS; 16 May Lincoln MO; 20 May Codington and Marshall WS

Western Tanager All Reports: 25 May Lawrence ND; 28 May Pennington RSL; 28 May Harding CEM; 30 May Pennington ND

Northern Cardinal reported 21 Mar Pennington JLB

Rose-breasted Grosbeak Early: 04 May Lincoln CA; 05 May Charles Mix RM; 05 May Union RDO; 22 May Harding CEM

Black-headed Grosbeak Early: 31 Apr Meade EEM; 03 May Stanley KM; 05 May Charles Mix RM

Blue Grosbeak All Reports: 18 May Custer MMM; 22 May Charles Mix RM; 25 May Bennett ND; 30 May Stanley KM; 30 May Lake JSP

Lazuli Bunting Early: 09 May Charles Mix RM; 15 May Stanley KM; 17 May Hughes EDS; 24 May Harding CEM

Indigo Bunting Early: 05 May Union and Lincoln RDO; 13 May Minnehaha CA

Dickcissel Early: 17 May Clay GJS; 19 May Lincoln KP; 29 May Charles Mix RM

Bobolink Early: 07 May Faulk MMM; 10 May Clay GJS; 11 May Lincoln CA, MKZ; 11 May Kingsbury JSP; 11 May Douglas KP; 15 May Pennington RSL

Red-winged Blackbird Early: 02 Mar Douglas KP; 03 Mar Clay GJS; 12 Mar Hughes KM; 21 Mar Custer RSL; 21 Mar Meade EEM

Eastern Meadowlark Early: 06 Apr Union DS; 09 Apr Clay GJS; 19 May Oglala Lakota ND

Western Meadowlark Early: 12 Mar Charles Mix RM; 12 Mar Pennington RSL; 18 Mar Stanley RDO; 19 Mar Aurora KM; 19 Mar Day WS

Yellow-headed Blackbird Early: 24 Mar Butte RSL; 30 Mar Minnehaha MKZ, CA; 02 Apr Pennington ND; 06 Apr Charles Mix KP

Rusty Blackbird Early: 23 Mar Lake JSP; 30 Mar Minnehaha CA, MKZ; 31 Mar Clay CA ... Late: 18 Apr Brown CV; 17 Apr Clay GJS; 13 Apr Lake JSP

Brewer's Blackbird Early: 24 Mar Charles Mix KP; 08 Apr Harding CEM; 11 Apr Douglas KP

Common Grackle Early: 18 Mar Minnehaha CA; 19 Mar Charles Mix RM; 20 Mar Lake JSP; 28 Mar Pennington ND

Great-tailed Grackle All Reports: 05 Apr Hutchinson KP; 23 Apr Hughes KM; 07 May Davison RDO; 11 May Clay GJS

Brown-headed Cowbird Early: 22 Mar Lake JSP; 23 Mar Kingsbury JSP; 31 Mar Clay GJS, CA; 31 Mar Minnehaha CA; 20 Apr Pennington CA

Orchard Oriole Early: 04 May Gregory RM; 05 May Lincoln RDO; 07 May Clay GJS; 14 May Custer MMM

Bullock's Oriole All Reports: 24 May Lawrence EK; 24 May Stanley ND

Baltimore Oriole Early: 01 May Charles Mix RM; 04 May Clay GJS; 05 May Lincoln and Union RDO; 15 May Pennington RSL

Reports Requiring Acceptance By The Rare Bird Records Committee

Surf Scoter 25 May Sully GH

Red-necked Grebe 10 May Harding CEM

Yellow Rail 29 Apr Clay DS
Arctic Tern 22 May Stanley RDO
Red-throated Loon 28 Mar Hughes and Stanley KM, RDO
Red-shouldered Hawk 22 Apr Stanley RDO
Pileated Woodpecker 02 May Minnehaha MS
Western Wood-Pewee 31 May Hughes DB
Eastern Wood-Pewee 24 Apr Charles Mix RM
Eastern Kingbird 12 Apr Day WS
White-eyed Vireo 05-26 May Lincoln RDO, ND et. al
Wood Thrush 20 May Harding CEM
Eurasian Tree Sparrow 23 Apr Stanley RDO
Yellow-throated Warbler 18-19 May Union DS et. al
Henslow's Sparrow 19 May Lincoln KP et. al

Species Expected But Not Reported

American Black Duck, White-winged Scoter (4), Ruffed Grouse, Greater Sage-Grouse, White-winged Dove, Broad-tailed Hummingbird, Common Gallinule (4), Red Knot (3), Short-billed Dowitcher, Neotropical Cormorant, Least Bittern, Little Blue Heron, Snowy Owl, Lewis's Woodpecker, Black-backed Woodpecker, Cordilleran Flycatcher, Plumbeous Vireo, Canada Jay, Pinyon Jay, Clark's Nutcracker (3), Bohemian Waxwing, Sprague's Pipit (2), Pine Grosbeak (3), Lesser Goldfinch, Evening Grosbeak, Worm-eating Warbler (2), Virginia's Warbler, MacGillivray's Warbler, Townsend's Warbler, Summer Tanager (2)

Contributing Observers

CA	Chris Anderson	GO	Gary Olson
DB	Doug Backlund	RDO	Ricky D. Olson
JLB	Jocelyn L. Baker	MO	Mark Otnes
RND	Roger N. Dietrich	JSP	Jeffrey S. Palmer
ND	Nancy Drilling	KP	Kelly M. Preheim
CLG	Canyon Lake Group	MS	Mark Schmidtbauer
GH	Gwen Harris	GJS	Gary & Jan Small
EK	Elizabeth Krueger	NS	Nik Snyder
RSL	Richard S. Latuchie	WS	Waubay NWR Staff
RM	Ron Mabie	EDS	Eileen Dowd Stukel
MMM	Michael M. Melius	DS	David Swanson
CEM	Charlie Miller	CV	Cheryl Vellenga
EEM	Ernest E. Miller	JDW	J. David Williams
KM	Kenny Miller	MRZ	Mick Zerr



Contents

President's Page	41
<i>by Scott Stolz</i>	
Announcements.....	41
SDOU Fall Meeting, October 4-6, 2019	43
<i>by Nancy Drilling</i>	
Summary of Research Presentations at the Fall 2019 SDOU Meeting	44
Avian Surveys at Canyon Lake Park, Rapid City, SD	48
<i>by Gene K. Hess</i>	
2018 Report of the Rare Bird Records Committee	50
<i>by David Swanson</i>	
The Spring 2019 Seasonal Report.....	53
<i>by Jeffrey S. Palmer</i>	

Photo Credit: Kelly Preheim 10/6/19
Sprague's Pipit, Fort Pierre National Grassland